





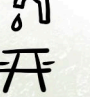
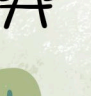


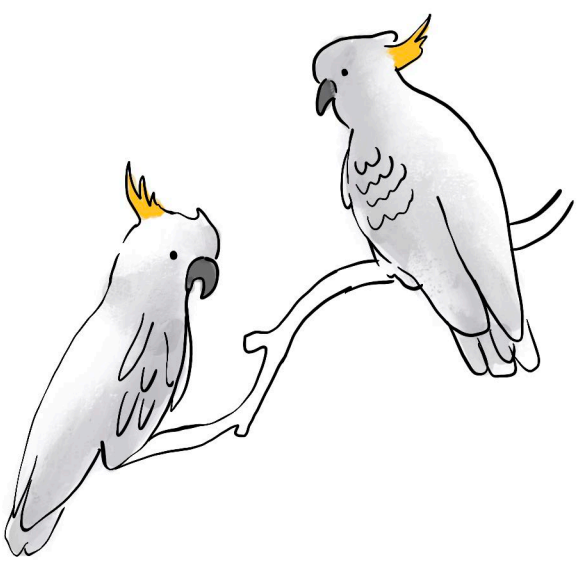
Plenty River Greensborough

WALKING CIRCUIT



KEY

-  WALKING CIRCUIT
-  PLENTY RIVER
-  TOILETS
-  ACCESSIBLE PARKING
-  PLAY EQUIPMENT
-  ENTRANCE POINT
-  WATER FOUNTAINS
-  SEATING

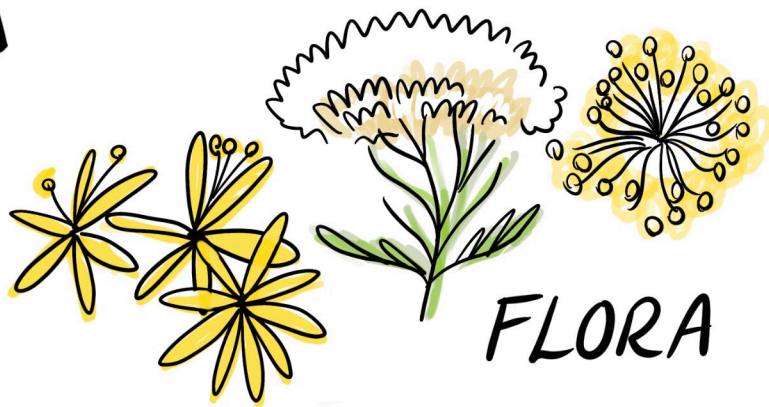


WATERMARC GREENSBOROUGH MAIN ST
PLAZA
0.5 km
VIA THE CIRCUIT

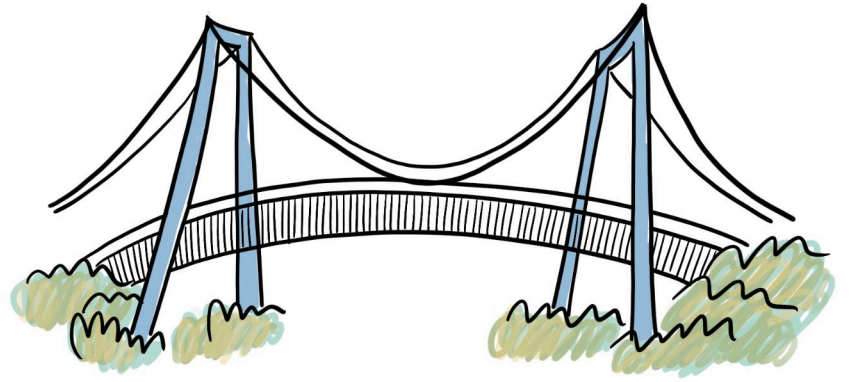
PLENTY RIVER TRAIL CONTINUES THIS WAY TOWARDS POULTER RESERVE

BANYULE CITY COUNCIL IS PROUD TO ACKNOWLEDGE THE WURUNDJERI WOI-WURRUNG PEOPLE AS TRADITIONAL CUSTODIANS OF THE LAND AND WE PAY RESPECT TO ALL ABORIGINAL AND TORRES STRAIT ELDERS, PAST, PRESENT AND EMERGING, WHO HAVE RESIDED IN THE AREA AND HAVE BEEN AN INTEGRAL PART OF THE REGION'S HISTORY

Points of Interest



FLORA



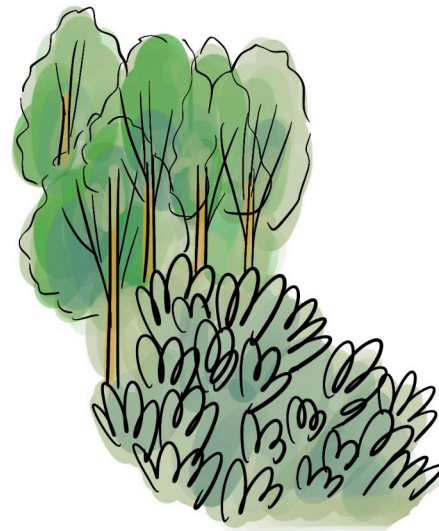
SUSPENSION BRIDGE



PLENTY RIVER



BIRDLIFE



THE ESCARPMENT
ENDANGERED
INDIGENOUS
VEGETATION

FUN FACT




FRUIT TREES CAN BE FOUND IN THIS AREA. THEY ARE ESTIMATED TO BE AROUND 100-150 YEARS OLD. CHARLES PARTINGTON OWNED THE LAND FROM THE 1870s AND LEASED IT TO HIS BROTHER IN LAW ROBERT WHATMOUGH, WHOSE ORCHARD RECEIVED PRIZES FOR ITS PRODUCE.



INFORMATION

- WALK, RUN, RIDE, SCOOT OR WALK THE DOG ON A LEASH
- DISTANCE - APPROX 2.5km/ 1 HOUR LEISURELY WALK
- SURFACE - CONCRETE PATH/ GRAVEL PATH
- DIFFICULTY - MODERATE TO MEDIUM

TRANSPORT

-  **BUS ROUTES**
293, 343, 385, 513, 517, 518, 566, 901, 902
-  **GREENSBOROUGH RAILWAY STATION**
-  **CAR PARKING AT KALPARRIN AVE, CARTER RESERVE & WATERMARC**
-  **CYCLE PARKING AT WATERMARC**

BE PREPARED

- DON'T FORGET A HAT, WATER BOTTLE, SUN PROTECTION AND SUNSCREEN
- BE MINDFUL OF OTHER WALKERS/ CYCLISTS ON THE TRAIL
- BE AWARE OF TRAFFIC WHEN CROSSING STREETS OR CARPARKS
- WATCH OUT FOR SNAKES DURING WARM WEATHER
- DAYS OF TOTAL FIRE BAN - CHECK THE FIRE RISK WARNING BEFORE EMBARKING ON THIS WALK
- STAY ON THE PATH - ENJOY YOUR SURROUNDINGS