

Banyule's WETLANDS, WATERWAYS & Wildlife Corridors



Wombat



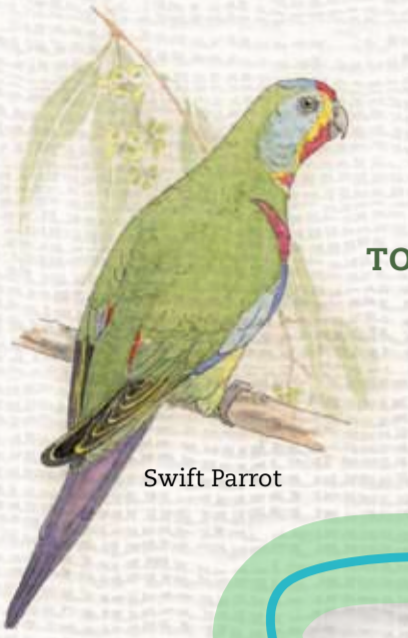
Echidna



Eastern Grey Kangaroo



Sugar Glider



Swift Parrot



Spotted Marsh Frog



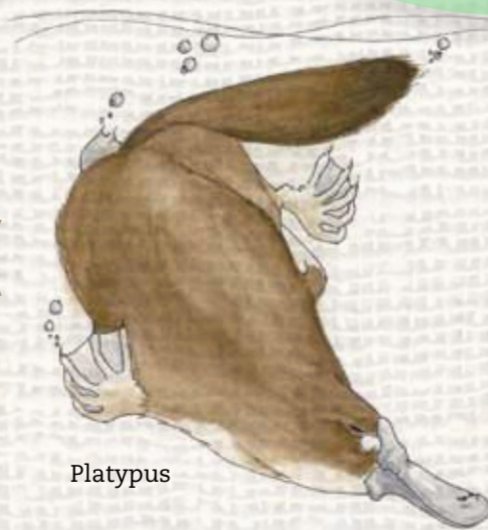
Eltham Copper Butterfly



Wandering Percher



Grey-Headed Flying-Fox



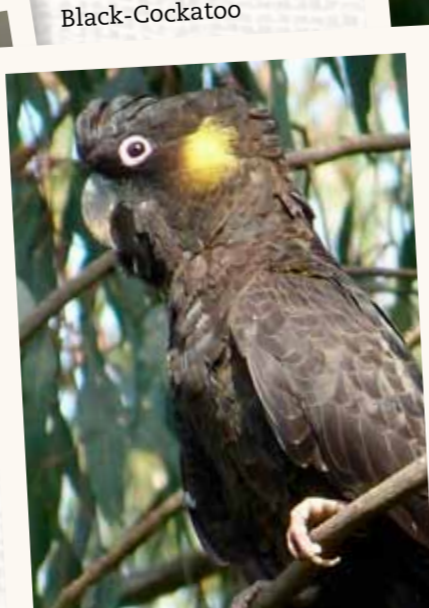
Platypus



Purple Swamphen



Superb Fairy-Wren



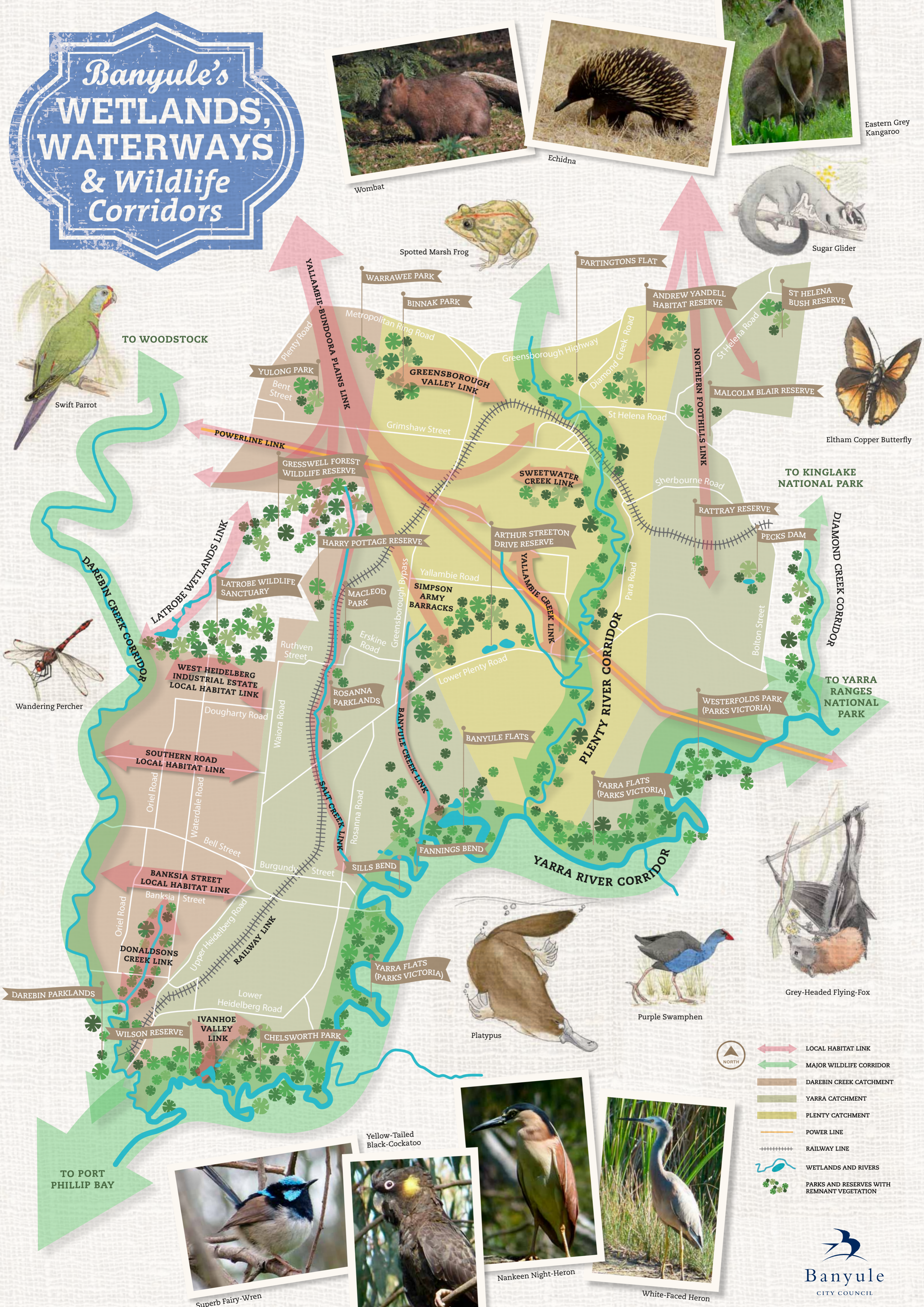
Yellow-Tailed Black-Cockatoo



Nankeen Night-Heron



White-Faced Heron



- LOCAL HABITAT LINK
- MAJOR WILDLIFE CORRIDOR
- DAREBIN CREEK CATCHMENT
- YARRA CATCHMENT
- PLENTY CATCHMENT
- POWER LINE
- RAILWAY LINE
- WETLANDS AND RIVERS
- PARKS AND RESERVES WITH REMNANT VEGETATION

Banyule's WETLANDS, WATERWAYS & Wildlife Corridors



"We are all visitors to this time, this place. We are just passing through. Our purpose here is to observe, to learn, to grow, to love... and then we return home."

Aboriginal Proverb

Did you know?

- Since European settlement, over 2/3 of Victoria's wetlands have been drained to make way for mining, farming and urbanisation
- Over 62% of Victoria's forest and woodland cover (some 12 million ha) has been cleared for similar purposes
- Banyule has less than 10% of its original vegetation cover
- There are 15 vegetation communities in Banyule, divided into 35 sub communities, with 28 considered threatened

Banyule City Council works hard to retain and maintain relatively large areas of open, natural spaces which include parks, reserves and a series of wetlands that provide habitat for a variety of native Australian and migratory birds and native animals. Natural spaces allow people to maintain a connection with the natural world which is important for their health and wellbeing and for a balanced lifestyle.

Banyule's Utility Corridors & Habitat Links

These are areas of retained open space because of utilities such as high voltage powerlines and railway tracks. They provide connections between catchments.

The Hurstbridge railway line forms a significant remnant and planted vegetation corridor. It acts as an open space link from the Darebin Creek, then running parallel with Salt Creek, crossing the Plenty River and then the Diamond Creek in the Shire of Nillumbik. There is remnant and planted vegetation for most of the length of the railway corridor.

The Powerline Local Habitat Link is an open space link from the Darebin Creek in the City of Darebin through Bundoora and Yallambie, crossing the Plenty River and running through the Heidelberg Golf Course and Lower Plenty to the Yarra River.

How do wetlands help keep our water clean ?

Wetlands play a huge role in filtering stormwater runoff, as fringing, indigenous wetland plants absorb excess nutrients, stabilise banks and filter water as it runs into the wetlands. Once in the wetland system, the flowing water becomes still, allowing pollutants, nutrients and sediment to settle on the bottom. UV light from the sun further purifies the water. When the wetland overflows in the next flood event, water flowing out into creeks and rivers is cleaner than when it entered the system. Some of Banyule's wetlands can be found at Banyule Flats in Viewbank and on the Ivanhoe floodplain of the Yarra River.



Banyule's Waterways & Wildlife Corridors

Darebin Creek

Arising in the north near Woodstock, the creek flows south through farmland, and enters Banyule at Bundoora, meeting the Yarra River at Alphington. The Creek links important remnant and restored habitat in Bundoora Park, LaTrobe University and Darebin Parklands with the Yarra River Corridor.

The Darebin Creek Valley is at the extreme eastern edge of the volcanic plains north of Melbourne. Around 1 million years ago, lava flows from volcanoes to the north filled up the river and creek valleys of the region. The creek now dissects the basalt rocks and soils created by these lava flows. Bundoora, Watsonia, Heidelberg West, Heidelberg Heights and Ivanhoe West sit on the broad basalt flats above the Creek.

Features include remnant Red Gum Woodland, some areas of remnant Kangaroo Grass Grassland, rocky outcrop escarpments above the creek and wetland systems within LaTrobe University.

Local habitat links associated with the Darebin Creek

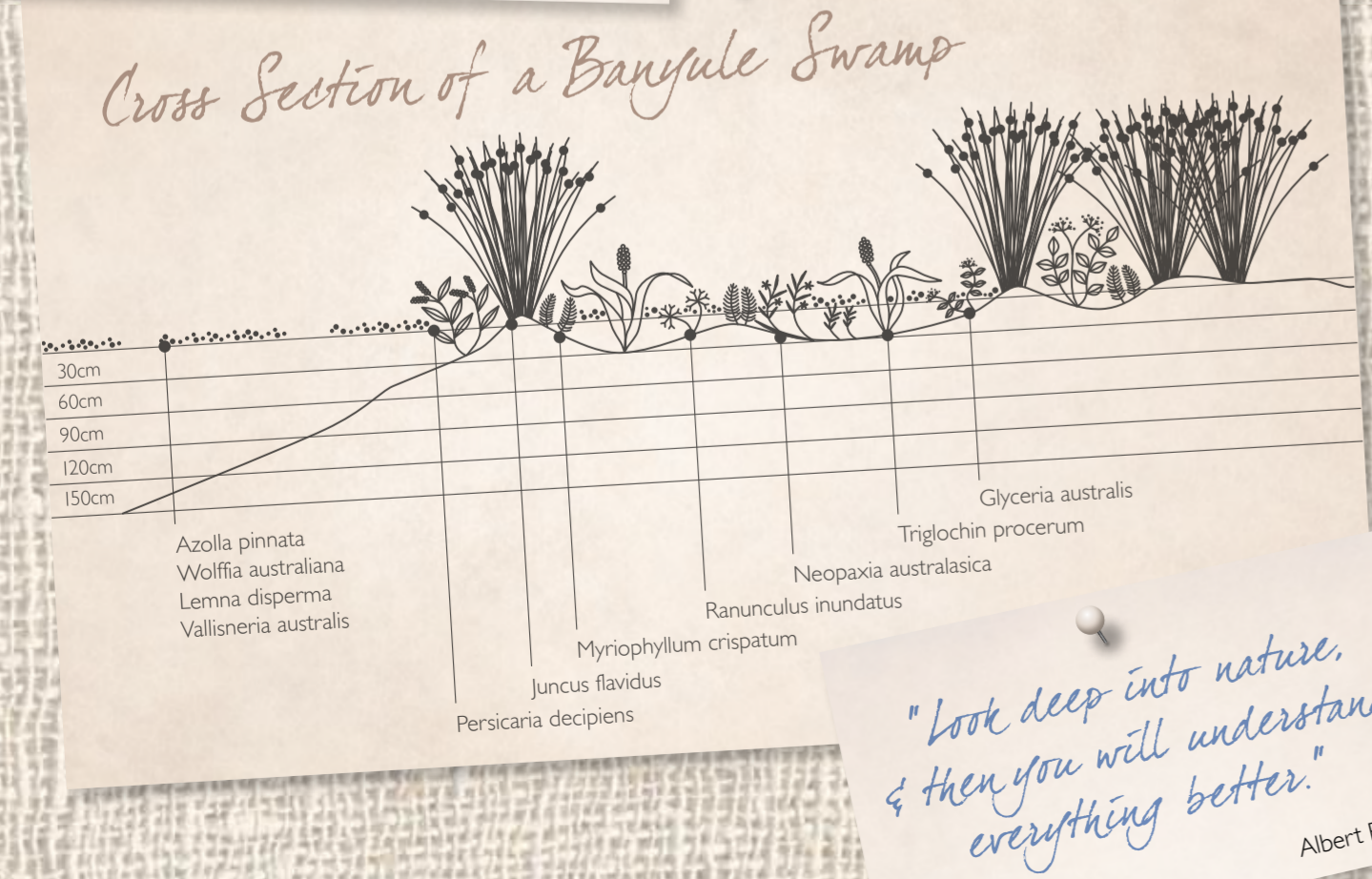
Donaldson's Creek, now an underground barrel drain for most of its length, has some remnant indigenous trees such as River Red Gum and Yellow Box and many planted native trees that provide habitat for local birds and possums.

Yallambie – Bundoora Plains is made up of remnant indigenous and planted Eucalypts linking Gresswell Forest and Simpson Army Barracks, both significant habitat reserves. Very old River Red Gums in Binnak Park and Parade College provide hollows for birds. There are remnant indigenous and planted native trees throughout residential areas and in parks and reserves such as Varravee, Yulong, Loyola and Greenwood.

Banksia Street – A short corridor brings birds up from the Darebin Creek at Cyril Cummins Reserve through Ford Park and into the avenue of Red Ironbark along Banksia Street. It continues through open space associated with the old Banksia Secondary College site, Banyule City Council's Transfer Station Operations Depot, the grounds of the Repatriation Campus of the Austin Hospital and Remembrance Park.

Southern Road – An avenue of Red Ironbark/Spotted Gum runs from the Darebin Creek at Olympic Park along Southern Road and links with Malahang Reserve and Shelley Park.

Heidelberg West Industrial Estate, Kingsbury Drive and Crissane Street contain mature remnant River Red Gums and Wattles and provides open space habitat.



"Look deep into nature, & then you will understand everything better."

Albert Einstein

Why are Wildlife Corridors & open spaces important?

For Animals

Wildlife corridors provide green freeways of natural vegetation for native animals to travel in, through and out of Banyule. They link patches of intact remnant vegetation with other areas. Native animals and birds use the habitat provided by the corridors to shelter their movements from predators, to provide a food source while they are on the move and importantly, to nest and breed in the hollows of larger trees.

Plenty River

A major tributary of the Yarra River arising from the Mount Disappointment escarpment of the Great Dividing Range, the Plenty River links important natural habitat remnants north of Banyule at Plenty Gorge Parklands and the forested hills around Kinglake National Park with the Yarra River corridor.

Features include continuous vegetation along the length of the river; rocky escarpments (eg. Partingtons Flat) supporting uncommon plants and animals, large old River Red Gums near the confluence with the Yarra and large old Manna Gums further upstream.

Local habitat links associated with the Plenty River within Banyule

The Northern Foothills extends over hills in residential areas and reserves throughout Lower Plenty, Montmorency, Briar Hill, Greenhills and St Helena. Remnant eucalypts such as Yellow Gum and Yellow Box are distinctive features. There is significant bushland within Andrew Yandell Habitat Reserve, St Helena Bush Reserve, Brown's Nature Reserve and Partington's Flat supporting endangered species such as the Eltham Copper Butterfly, Emerald Greenhood and Swift Parrot. The eucalypt canopy through residential areas in the Northern Foothills links the Plenty and Yarra catchments.

Yallambie Creek rises in Greensborough and flows east to join the Plenty River at Yallambie. The creek links important areas of natural habitat such as Simpson Army Barracks and reserves in Streeton Views Estate. Large old River Red Gums and the largest stand of the rare Studley Park Gum occur here.

Yallambie to Bundoora Plains – Large old River Red Gums scattered throughout residential areas and reserves in Watsonia and Bundoora are the key feature of this local habitat link. They link remnant bushland from the Simpson Army Barracks in Yallambie to Gresswell Forest in Bundoora. The hollows in the ancient gums provide nest sites for birds, bats and possums.

Sweetwater Creek, a short, natural tributary of the Plenty River, flows through residential backyards in Greensborough. Its steep banks support remnant Valley Forest with Swamp Gum, Yellow Box and Blackwood. There are remnants of the dense shrubby layer with Prickly Moses, Snowy Daisy-bush, Hazel Pomaderris, Burgan and Sweet Bursaria.

Greensborough Valley Creek rises in Binnak Park with its ancient remnant eucalypts, replanted shrubby habitat and constructed wetlands. The Creek flows underground through stormwater drains and opens out into a lake at Kalparrin Gardens before it drains into the Plenty River. Kalparrin Gardens is the site of one of Banyule City Council's unique, award winning Stormwater Harvesting Projects, which captures and cleans stormwater before it enters the Plenty River. Council uses the treated water for the irrigation of adjacent ovals and parks, saving potable drinking water and money.

For People

Recent research is showing that due to increasing urbanisation, sedentary lifestyles and the advent of screen technologies, humans are suffering from conditions such as 'nature deficit disorder'. Banyule's open spaces provide an opportunity for residents to redress this imbalance and spend time reconnecting with the natural world away from the fast pace of modern life. By joining local "friends of" groups, residents have the opportunity to take action to maintain and restore these natural spaces while connecting with like-minded people in their local area.

Yarra River

Known to the indigenous Wurundjeri people as Birrurung, the Yarra River forms Melbourne's most significant wildlife corridor. The river links natural habitats in the inner suburbs (including links to Port Phillip Bay) with the extensive mountain forests of the Yarra Ranges National Park.

Above the Plenty River, the floodplain narrows and the land rises steeply to the dry Silurian hilltops of Briar Hill, Greenhills, St Helena and Diamond Creek with their characteristic Box-Stringybark Eucalypt Forest cover.

Features include extensive wetlands along the Yarra floodplain, large old River Red Gums and an extensive network of public open space.

Local habitat links associated with the Yarra River within Banyule

Salt Creek cuts through the hills above the Yarra. Salt Creek rises in Gresswell Forest, travels past Harry Pottage Reserve in Macleod and is piped underground for most of its length. The natural creek opens out through Macleod Park and Rosanna Parklands before Banyule City Council taps into the pipe under Grove Road at De Winton Reserve, the site of another Stormwater Harvesting Project. Water is stored under the De Winton car park, cleaned and used to irrigate the reserve. Salt Creek flows through Heidelberg and enters the Yarra at Warringal Park.

Banyule Creek rises within the Red Gum Grassy Woodland at the Simpson Army Barracks just below Greensborough Road and enters the Yarra at Banyule Flats Reserve, the overflow feeding Banyule Swamp.

Ivanhoe Valley Creek is a short water course draining into the Yarra at Wilson's Reserve marked by River Red Gums and Silver Wattle.

Wilson's Reserve and Chelsworth Park is the third Stormwater Harvesting Project site in Banyule. Stormwater is diverted from the The Boulevard drain, cleaned, stored underground and used to irrigate Chelsworth Park sporting fields and Ivanhoe Golf Course, ensuring water flowing into the Yarra is cleaner.

The Eucalypt cover of the Northern Foothills connects the Plenty and Yarra catchments.

How can you be involved?

Clean up Australia Day

Banyule Council encourages volunteers to take part in Australia's largest community participation event, Clean Up Australia Day, held on the first Sunday of March. We have a number of sites across the municipality so check the council website closer to Clean Up Australia Day to find one near you or go to the Clean Up Australia Day website: <http://www.cleanup.org.au/>

National Tree Day

National Tree Day and Schools Tree Day combine to make Australia's biggest community tree-planting and nature care event. These are special days for all Australians to help out by planting and caring for native trees and shrubs to improve the environment in which they live. National Tree Day started in 1996 and since then more than 3 million people have planted 21 million seedlings!

Banyule City Council's Bushland Management Team works in conjunction with local friends groups to host several National Tree Day sites across the municipality to plant not only trees, but other indigenous plant species to add to the natural beauty of our environment and provide habitat for our native fauna.

To find a site near you, contact Banyule City Council or your local friends group or go to the National Tree Day website: <http://treeday.planetark.org/>

Friends Groups active in Banyule reserves

Banyule's vast parks, reserves and wildlife corridors are jointly managed by the Bushland Management Unit, Environmental Planning team and the various Friends and Environmental groups. Throughout the year there are ongoing projects that need volunteer contributions. These range from tree planting days, ongoing weed management, fauna monitoring through to becoming an active member of one of these groups.

Darebin Parklands Association Inc.
www.dpa.org.au

Friends of Banyule
www.friendsofbanyule.org/home.aspx

Friends of Darebin Creek
PO Box 5036, Alphington 3078
www.friendsofdarebin creek.org.au

Friends of Montmorency Bushlands
Pam Rowley 03 9439 1853
prowley@chariot.com.au

Friends of Plenty River
Kevin Ley 03 9435 3840

Friends of Salt Creek and Associated Parklands
Louise Muller 0403 810 004
Email: foscap09@gmail.com

Friends of St Helena Bush Reserve
Lawrie Rigg 0420 363 142
Email: lrigg@bigpond.net.au

Friends of Wilson Reserve
Robert Bender
Email: redneb.trebor@gmail.com

Friends of Andrew Yandell Habitat Reserve
Donna 03 9444 7620
www.facebook.com/Friends-of-Andrew-Yandell-Habitat-Reserve-788962387857990/timeline/

Friends of the Yarra Valley Parks
Gaham Patterson (President) 03 9432 0163
www.yvfriends.org.au
Email: info@yvfriends.org.au

Warringal Conservation Society
www.warringal.org.au