

# Malahang Reserve

- WALKING CIRCUIT -

Banyule City Council is proud to acknowledge the Wurundjeri Woi-wurrung people as traditional custodians of the land and we pay respect to all Aboriginal and Torres Strait Elders, past, present and emerging, who have resided in the area and have been an integral part of the region's history.



Circuit		Bike Hut	
Toilets		Water fountain	
Accessible car park		Seating	
Off-lead dog park		Playgrounds	
Bus stop		BBQ & Picnic shelter	
Skate park		Soccer pitch	
Bicycle lane		Basketball court	
Exercise equipment			

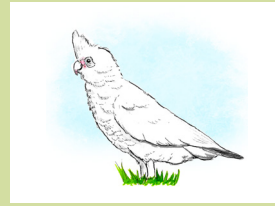
# Malahang Reserve



Galah



Bike Hut



Little Corella



Rainbow lorikeet



Welcome Swallow



Exercise equipment



Straw ibis



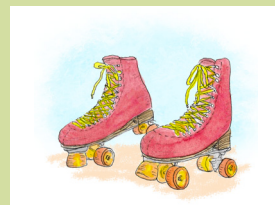
Skateboard



Cycle



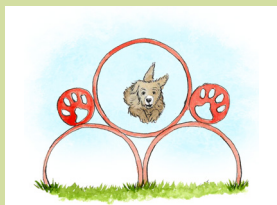
Soccer



Roller Skate



Scooter



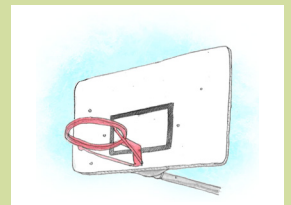
Off lead dog park



Native trees



Playground



Basketball

## Malahang Reserve Walking Circuit

### Information

- Walk, run, scoot or walk the dog on leash.
- Distance: Approx 2km/30 mins leisurely walk.
- Surface: Concrete path.
- Gradient: Mostly flat.
- Difficulty: Easy to Moderate.

### Be Prepared

- Don't forget a hat, water bottle, sun protection and sunscreen.
- Be mindful of other walkers on the path.
- Be aware of traffic when crossing streets and carparks.
- Be mindful and caring of revegetation, flora and fauna in the reserve.
- Days of total fire ban - check the fire risk warning before embarking on this walk.
- When walking with your dog, ensure you maintain effective control over your pet at all times and please pick up doggy's poo!
- Enjoy your surroundings – have fun!

### Transport

- Bus routes: 250,350, 549, 903 on Oriel Road. 517 on Southern Road. 548 on Waterdale Road.
- Accessible car parking: Malahang Reserve
- Bike parking: Malahang Reserve.
- Bike lanes: Oriel Road and Altona Street.

More information on Council's parklands, reserves and walking trails can be found at [banyule.vic.gov.au](http://banyule.vic.gov.au)