

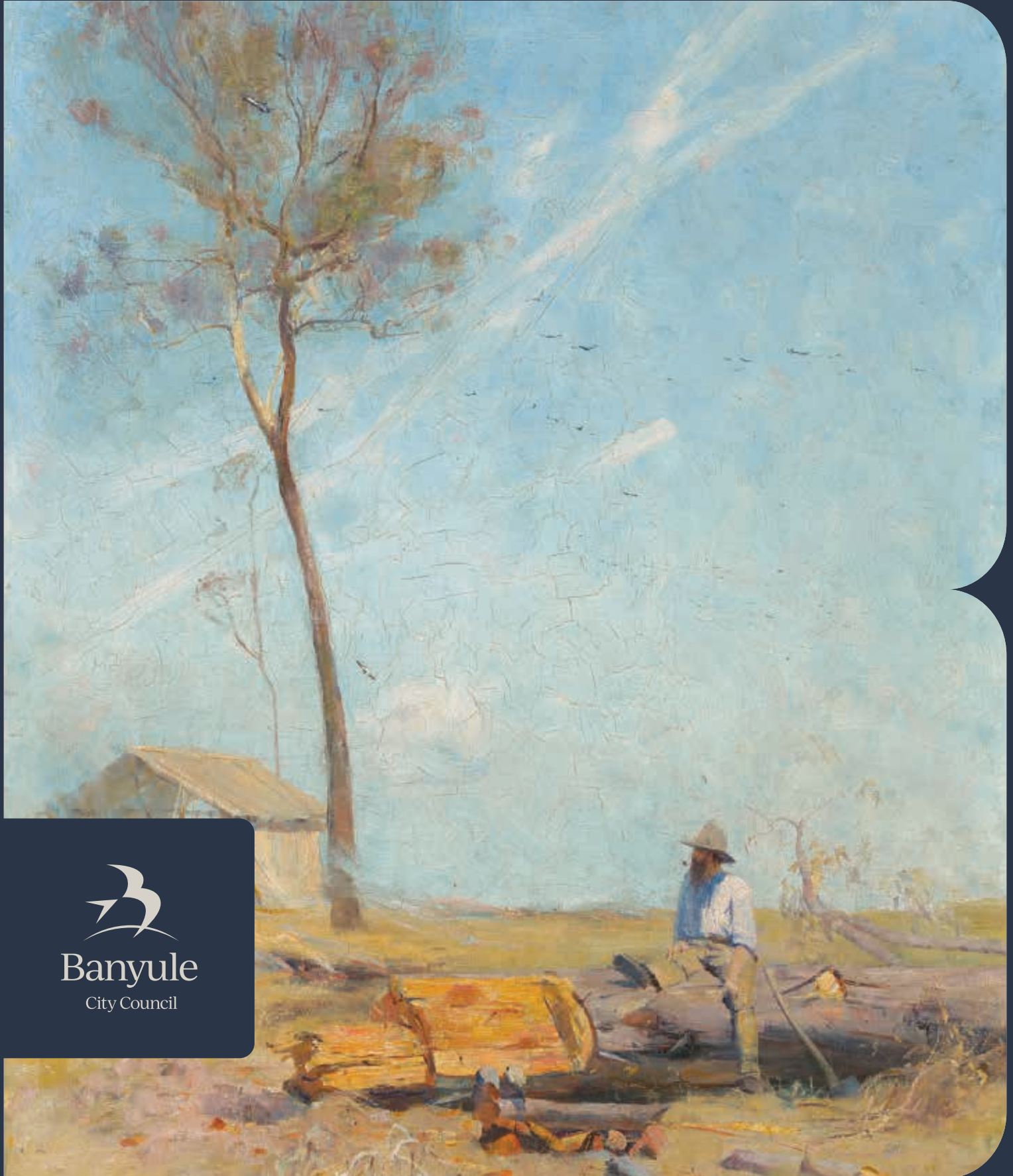
Banyule Banner

3 Artworks come home

6 Capital works updates

14 Towards zero waste

February 2025



Mayor's Message

Mayor Cr Elizabeth Nealy



I hope it's been a great start to 2025 for you and your loved ones.

Your new Council has hit the ground running as we work through our induction period.

This stage of intense work with Banyule's executives, managers and Governance team prepares the new Council for the hard work ahead and ensures we all understand our responsibilities. It's an important learning curve for all councillors, whether newly elected or returning.

I'm delighted that the new Council is already working together well.

Treasures come home to Heidelberg

We're excited to announce that Banyule is hosting some of Australia's most beloved artworks for the next two years.

These paintings from the National Collection are priceless, so it is a credit to Banyule's Arts and Culture team and our Art Curator, Steph Neoh, that we have been entrusted with their care. Read about *Early Impressions – Painters of the Heidelberg School from the National Collection* on **Page 3**.

Nominate a volunteer

In other good news, we're bringing back the Banyule Volunteer Awards after a four-year hiatus due to the pandemic. It's your chance to nominate one of the individuals or organisations who contribute so much to our community.

Nominate online at **banyule.vic.gov.au/VolunteerAwards**, phone **9457 9955** or email **volawards@banyule.vic.gov.au**

Nominations close on 23 March. The nominees will be invited to our annual Volunteer Celebration in May.

New rules for pets from 1 February

Banyule's new rules for cats and dogs in public places came into effect on 1 February. We've been getting the message out in various ways over many months and hopefully you understand what the new rules mean for you and your pets. Turn to **page 10** for a reminder and tips on caring for pets on hot summer days.

Summer fun for everyone

Finally, the summer of community events rolls on with Twilight Sounds, Malahang Lantern Festival and a new Harmony Bazaar. Read on for all the details and come and say hello if you see me there!

Stay in touch with us online


 Email newsletters
banyule.vic.gov.au/subscribe

  
[@BanyuleCouncil](https://www.facebook.com/BanyuleCouncil)


Have your say on important projects and local initiatives

 shaping.banyule.vic.gov.au

Council Meetings

 Upcoming dates:
10 February
3 March

 From 7pm

 Council Chambers @ Ivanhoe Library and Cultural Hub,
275 Upper Heidelberg Road, Ivanhoe.
Live streamed on Facebook and our website.

For agendas, minutes, public question time and request to speak forms, visit **banyule.vic.gov.au/CouncilMeetings**

Banyule City Council is proud to acknowledge the Wurundjeri Woi-wurrung people as Traditional Custodians of the land and we pay respect to all Aboriginal and Torres Strait Islander Elders, past, present and emerging, who have resided in the area and have been an integral part of the region's history.

Our community is made up of diverse cultures, beliefs, abilities, bodies, sexualities, ages and genders. Council is committed to access, equity, participation and rights for everyone; principles which empower, foster harmony and increase the wellbeing of an inclusive community.

Cover: (detail of) Arthur Streeton, *The selector's hut (Whelan on the log)*, 1890, National Gallery of Australia, Kamberri/Canberra, purchased 1961. Part of our upcoming exhibition. Story on **page 3**.



Charles Conder, *The Yarra, Heidelberg*, 1890, National Gallery of Australia, Kamberrri/Canberra, gift of James Fairfax AO 1992

Early Impressions – Painters of the Heidelberg School from the National Collection

With thanks to the Australian Government's 'Sharing the National Collection' initiative, we are bringing the Heidelberg School back to Heidelberg, sharing these treasures of local history with our community.

Banyule Council is proud to present *Early Impressions – Painters of the Heidelberg School from the National Collection*.

On public display locally for the first time since they were painted here more than a century ago, we are thrilled to showcase paintings by Arthur Streeton, Clara Southern, Louis Buvelot, Charles Conder and Tom Roberts.

The paintings from the National Collection have been selected for their portrayal of scenes in and around Banyule.

With their iconic representation of colonial history and heritage, these realist and highly romanticised paintings provide us with the artists' early impressions of the landscapes and settler life in Melbourne.

"These are popular, nationally significant artworks and are adored by locals," said Banyule Mayor Cr Elizabeth Nealy.

"It's truly remarkable that these paintings are finally coming home to where they were painted; the area which lent its name to this important Australian art movement."

About the Heidelberg School

The Heidelberg School was the first significant Western art movement in Australia.

The name was coined in 1891 by art critic Sidney Dickinson to describe the group of Impressionist artists who painted in the rural outskirts of Sydney and Melbourne and established outdoor painting camps in Heidelberg and Eaglemont. Like their European counterparts, the Australian Impressionists were noted for painting *en plein air* (in the open air), recording fleeting "impressions" of the scenes before them, a novel practice at the time.

Early Impressions – Painters of the Heidelberg School from the National Collection

22 February 2025 – 31 January 2027

Art Gallery 275, Ivanhoe Library & Cultural Hub, 275 Upper Heidelberg Road, Ivanhoe

PRESENTED BY



NATIONAL TOUR SUPPORTER



Shaping Banyule

Get involved in local projects



ThinkTank presents recommendations to Council

We're celebrating the achievements of the Banyule Community ThinkTank.

A diverse and representative group of Banyule community members, the ThinkTank completed its final workshop in December.

The ThinkTank had the big task of identifying key priorities and principles to guide Council in its work over the next four years and beyond.

At the end of four workshops, the group recommended 34 priorities, put forward nine principles to guide Council's work and revised the 2041 Banyule Community Vision.



What did the ThinkTank members do?

- Contributed their experience and local knowledge to the discussions
- Forged strong connections with fellow members, councillors and Council officers
- Learnt about Council planning, budgeting, asset management and services
- Analysed information collected from community discussions
- Presented their recommendations to Council



"I appreciate the opportunity to meet a diverse group of people from Banyule to share our ideas of how to make the community a better place to live and to form a vision of what the future Banyule looks like."

- Chan



"The ThinkTank took me out of my comfort zone and gave me new skills to do things I would never have imagined myself doing six months ago – addressing the councillors and showing me that I can make a positive difference and impact."

- Deborah



"I valued the clear and accessible education on how Council operates and what it is trying to achieve. It was encouraging to get a guided tour of the great work being done and the careful consideration that goes into how Council manages its resources."

- Kyle

Next steps

Council will respond to the ThinkTank's recommendations and consider its priorities in drafting key documents such as the Budget and Asset Plan. Drafts of these plans will be available for public review in March before they are finalised and presented to Council in June.

To read more, watch a video about the ThinkTank's work, or have your say on local projects and activities, scan the code or visit shaping.banyule.vic.gov.au





North East Link tree planting

The North East Link Project (NELP) has agreed to Council's proposal for early planting of advanced trees as part of the project's tree replacement obligations.

In a positive development that sets the stage for more revegetation projects, NELP has provided funding to plant and maintain 599 advanced trees like the one being tended by Council's Urban Forester Ryan, pictured above. They are being planted in Binnak Park, Malahang Reserve, Elder Street River Reserve and Kalparrin Gardens.

NELP has also agreed to fund the planting of a further 1600 trees in Banyule this year – 600 in parks and reserves and 1000 street trees in the NELP project area.

Council recommended these tree locations in line with our Urban Forest Strategy, which prioritises increasing canopy cover where it's needed most.

Council believes all trees removed for the North East Link project can be replaced in Banyule and is keen to work with NELP to ensure this takes place.

Find out more about Council's advocacy on the project at shaping.banyule.vic.gov.au/NorthEastLink

Noise and air quality during construction

The NELP construction is guided by an Environmental Management Framework that sets noise and air quality requirements.

For more information or to report a concern, contact NELP directly online at bigbuild.vic.gov.au or phone 1800 105 105.

Protecting our urban forest

Council is committed to preserving and renewing Banyule's urban forest and ensuring the future of our trees and landscapes.

Banyule has thousands of amazing native and exotic large trees in Council reserves, nature strips, open spaces and on private properties. These trees provide valuable shade and wildlife habitat, add to biodiversity and help stabilise soils and our natural environment. Not to mention the natural beauty that enhances everyone's enjoyment of our neighbourhoods!

Our urban forest is also an important asset to help manage the effects of climate change. Council is working towards canopy cover of 30% for all of Banyule as part of our Urban Forest Strategy.

Prosecuting illegal tree removals

Trees and green areas are protected under the Banyule Planning Scheme. Council actively pursues breaches when trees are removed illegally by property owners, developers or contractors.

Anyone who removes trees without a permit can be fined or prosecuted in the Magistrates' Court. While we cannot release details of current legal proceedings, Council has mounted many successful prosecutions that have resulted in hefty fines.

Have you witnessed the illegal removal of trees? Report it to us so action can be taken.

Call us on **9490 4222**, email enquiries@banyule.vic.gov.au or use our easy Report It form (details below).



See it, Report It

Let us know about suspected illegal tree removals and other issues, such as dumped rubbish or abandoned cars, with our quick and easy Report It form. Make immediate reports and send us photos from your mobile phone.

Scan the code or head to banyule.vic.gov.au/ReportIt





New sports pavilion for Olympic Park

We have begun building a new, accessible community sports pavilion and public toilets in Olympic Park, Heidelberg West.

The pavilion, between the north and south ovals, will accommodate cricket, soccer and other permitted activities. It's the final stage of the Olympic Park Masterplan and is due to be completed in early 2026.

This stage also includes more landscaping, trees and paths around the north and south pitches and upgrades to the facade of Barrbunin Beek Gathering Place.

Over the past few years, we've transformed Olympic Park with new and upgraded sporting, recreational and leisure facilities for local residents, clubs and the wider community.

Originally planned to finish in 2030, we're getting it done much sooner thanks to \$8 million in Victorian Government funding, in addition to Council's \$10.5 million commitment.

See the plans and find out more at shaping.banyule.vic.gov.au/OlympicPark



Rosanna Library

You'll be able to see the new Rosanna Library taking shape now that the underground and foundation works are completed. The main building stage has started. Over the coming months, precast wall panels and structural steel will be installed.

The new library, delivered through a partnership with Woolworths, will be three-storeys with indoor and outdoor spaces. The pop-up library service is at 56 Beetham Parade Rosanna until the new library is complete, expected to be in late 2025.

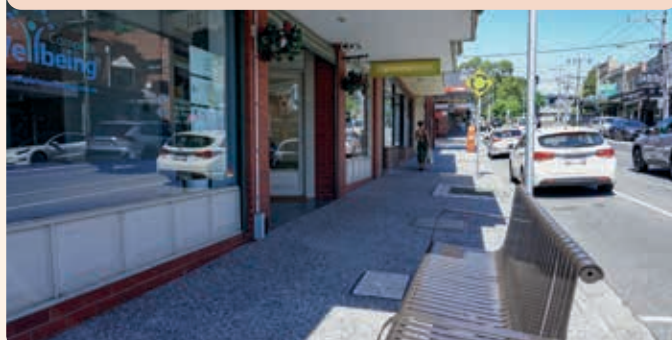
Visit shaping.banyule.vic.gov.au/RosannaLibrary



East Ivanhoe

East Ivanhoe shopping village has a refreshed and more inviting look after a significant streetscape upgrade. There are safer and more accessible crossings at busy streets, high quality footpath surfaces and fresh new street furniture such as rubbish bins and bike racks.

There are a few more improvements to come over the next months, including a drinking fountain in Burton Crescent and new signage. The final touch will be new trees, which we'll plant in the cooler months to give them the best chance to thrive.



Watsonia Town Square

We're into the last construction stage of Watsonia Town Square and expect to be finished in about six months.

We're working on the area next to the library, which will become a playground with landscaping and an accessible toilet block. The car park section next to the old toilet block is temporarily unavailable while we finish this stage but will re-open later this year when the Town Square is finished. Residents can still access the library by footpath.

We've come so far! Last year we completed most of the big infrastructure for the Town Square. We:

- Removed two roundabouts on Watsonia Road and High Street
- Reconstructed the central car park on Morwell Avenue
- Installed a large water retention system under the Morwell Avenue car park
- Built a new shared user path (to connect through to the station) and an arbour for shade.
- Raised pedestrian crossings at High Street and Watsonia Road, including pedestrian lights at Watsonia Road (to be activated in coming months).
- Added disabled parking spaces that meet current standards

We're keeping the angle parking along Watsonia Road and creating eight new spaces.

We know that it's been disruptive and inconvenient at times. We appreciate everyone's patience while we finish creating a fantastic new asset for the Watsonia community.

Visit shaping.banyule.vic.gov.au/WatsoniaTownSquare



Landscaping work underway near Morwell Avenue

Planning for a better Banyule

We're preparing a new Budget and Council Plan to guide Council's work over the next four years and beyond.

We collected input from the community during an intensive consultation period last year and the Banyule ThinkTank has done fantastic work analysing all the information and identifying key priorities and principles to guide Council (read the story on [page 4](#))

Five important draft plans will be available for public comment from 3 March:

- Budget 2025 – 2029
- Financial Plan 2025 – 2035
- Rating and Revenue Plan 2025 – 2029
- Asset Plan 2025 – 2035
- Banyule Plan 2025 – 2029 (includes Municipal Public Health and Wellbeing Plan)

After community feedback, they will be finalised before being presented to Council for adoption at the 23 June meeting.

Have your say from 3 March

View the draft Budget and other plans and tell us what you think.

Scan the code or head online to shaping.banyule.vic.gov.au



Caring for our local carers

Are you looking after someone who has dementia, a disability, age-related care needs or is living with a mental or chronic illness? Carers are very good at looking after others but sometimes their own wellbeing takes a back seat.

Council's program of classes and groups to support carers is highly popular, with more than 380 carers registered. Participants get a lot of benefit from the activities we provide. They help carers to recharge and connect with other carers through free classes and groups and aquatic and fitness wellbeing passes to use any time.

Who can take part?

You DO NOT need to be a carer/NDIS payment recipient to register or go on the mailing list.

You DO need to register to access activities and passes. Registration details are at the bottom of this page.

Weekly (Starting in February)

Wellbeing & relaxation

📅 Tuesdays 11.30am – 12.30pm

📍 Olympic Leisure Centre, Heidelberg West

Bring calm and focus to your daily life in these accessible, inclusive relaxation sessions.

Gentle yoga

📅 Thursdays 9.30am – 10.30am

📍 Watsonia Neighbourhood House

Learn self-care tools through gentle movements in these nourishing yoga classes.

Tai chi qigong

📅 Fridays 11am – 12pm

📍 Greenhills Neighbourhood House, Greensborough.

Flowing movements and gentle stretches. Deepen mind-body connection to find ease and calm.

Monthly

Carers walking group

📅 First Tuesday of the month (starting March), 10am

📍 Meet at Bellfield Community Hub

Meet other carers and get some fresh air on this relaxing walk. Participants need to be able to comfortably walk for at least a kilometre along paved and gravel paths.

Banyule carer support group

📅 Second Thursday of the month (starting February) 10.30am – 12pm

📍 Watsonia Neighbourhood House

A friendly, welcoming monthly catch-up for all carers. Chat with other carers, find out about services or have a break from your caring role over free morning tea.

"Everyone is honest and candid about life as a carer - nice to feel you are not alone."

Art therapy

📅 Fourth Tuesday of the month (starting February), 1pm – 2.30pm

📍 Watsonia Neighbourhood House

Use creative techniques to relax the mind and de-stress. No art experience necessary.

Coffee group for carers of a child with neurodivergence or disability

📅 Fourth Thursday of the month (starting February), 10am

📍 Mabel Jones café, Greensborough

Share information, empathy and a laugh with other carers who 'get it' and enjoy a free hot or cold drink.

"Sharing concerns and events (good and awful) with other people whose experience allows them to understand."

Aquatic and fitness wellbeing passes

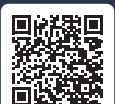
Free visits for carers to attend group classes, the gym or aquatic facilities at WaterMarc or Ivanhoe Aquatic Centre. Apply any time through the carers program.

"The passes encourage and motivate me to actually take the time and do something for my own wellbeing and fitness."



Find out more and register for the program at banyule.vic.gov.au/CarerSupport or scan the code.

Questions? Contact Tash at carers@banyule.vic.gov.au or call 9422 8396.






Kinder news

Register for kindergarten

Registrations for kinder attendance in 2026 open at 8.30am on Monday 3 March.

Register your child for three- or four-year-old kinder at one of Banyule's 26 sessional kinders. It's easy and free to register with our central registration service. Registrations remain open as long as places are still available.

Kindergarten Open Day

 Saturday 22 February, 9am to 12pm

Learn the benefits of kinder for lifelong learning. Teachers and staff at Banyule's 26 kinders welcome families and young children to tour the facilities, meet our teachers and view the programs available.

Kinder access support

Our aim is to make kinder accessible and beneficial for all young children and families. We can help with the registration process and with translation for people from a culturally and linguistically diverse background.

Your Council contact:

Bilan Ismail, Outreach Support Officer
Phone: 9422 6109
Email: bilani@banyule.vic.gov.au

For more about the Open Day and kinder registrations – scan the code or visit banyule.vic.gov.au/kindergartens



Kinder re-opens in Ivanhoe East

We're excited to welcome children and families to the new Ivanhoe East Preschool for the first term of kinder this year.

The Council-managed \$3.6 million project was funded by the Victorian Government, as part of the Department of Education's Building Blocks grant program.

Local families will enjoy a state-of-the-art early childhood facility that offers top quality education and care and is fully accessible.

The new building replaces the smaller kindergarten and Maternal Child Health centre formerly on the site. It has two classrooms, allowing us to offer more three- and four-year-old kinder programs.

We've used best-practice environmentally sustainable design and materials as we work towards reducing Banyule's environmental footprint.

Families in the area can now attend Maternal and Child Health services at Ivanhoe Library and Cultural Hub.



New rules for dogs and cats apply now

Banyule's new rules came into effect on 1 February. They include a nightly curfew for cats and on-lead rules for dogs.

- Cats need to be contained on your property at night, between 7pm and 7am.
- Dogs must be on a lead in public places like shops and playgrounds, and are prohibited in environmentally sensitive areas.

There is a six-month enforcement amnesty to support cat owners to transition to the new curfew.

Caring for dogs and cats over summer

Keep your pets healthy during the warmer months with these tips:

- Have plenty of fresh, cool water accessible to your pet, preferably in a few different places in case one gets knocked over.
- Make sure your pet has shade during the day, and ideally bring pets indoors on hot days.
- If your dog or cat seems uncomfortable on hot days, try wetting their feet and misting water onto their face.



Find out more about the new rules and where dogs can and can't be off-lead by scanning the code or head to banyule.vic.gov.au/PetsInPublic



Café coup for Bellfield trainees

Trainees took charge of For Change Café at Bellfield Community Hub for the twice-yearly trainee takeover day.

It's the trainees' chance to run the café and display the skills they've learned during their six-month traineeship. For many of the trainees, it is a validating and confidence-building experience and a big final challenge.

Despite rainy weather, the café was busy and our four trainees absolutely smashed it.

Lexi, pictured with barista Oscar, did an amazing job as supervisor, rising to the challenge of a leadership role.

Oscar was an absolute rock on the coffee machine and handled the pressure of a busy Saturday service with ease.

Trainees Gus and Kelly also shone. Gus served tables and helped other trainees, while Kelly ran the floor, maintaining a laser-like focus the whole day.

For Change Co. is one of Banyule Council's social enterprise partners. For Change Café provides employment and training for local young people at risk of homelessness and who face barriers to employment.

It also offers work experience placements for students from nearby Waratah Special Development School, all while providing delicious food and drinks for the local community and visitors to Bellfield Community Hub.



Bellfield housing is more than a home

Residents in the social housing development have grown deep roots since moving in a year ago.

A year ago they were strangers moving into a new block of flats. Today they are a close-knit community spanning several generations and with cultural traditions that traverse the globe.

Residents of Launch Housing in Bellfield gathered in December to celebrate one year since the first residents moved into the 58-unit social housing development next to Bellfield Community Hub. They were joined by Launch Housing staff and Banyule councillors for the party in the building's communal rooms and garden.

Deputy Mayor Cr Peter Castaldo said the \$25.2 million development was an example of how local and state governments and housing providers could work together to create high-quality homes for those in most need.



Cr Mary O'Kane, left, and Cr Alida McKern, right, in the communal Kitchen with resident Georgia, who cooked her signature Greek dishes for the celebration.

Banyule Council led the project, offering the land on a long-term lease. The Victorian Government contributed \$18.61 million and social housing provider Launch Housing contributed \$6.6 million. Launch Housing managed the build and placed residents from the Victorian Housing Register and now manages the property. At their one year celebrations residents paid tribute to Launch Housing Tenancy Manager Tessa Densley.

"I feel safe and it's a very supportive community. It's wonderful to have a place of our own to call home."

– Kristy and daughter Gwen



"We love living here. It's a welcoming, fun and vibrant community and we have made a lot of friends. It's close to everything – shops, maternal and child health services and transport."

– Syman, pictured with partner Jasmine and their daughter Lilith



Ageing Well Housing Forum


Are you or someone you know considering housing options for later in life? The Banyule Ageing Well Housing Forum is here to provide information and practical advice tailored to older adults.


This exciting forum brings together experts, community leaders and support services to discuss important topics, including:

- ageing at home
- housing needs and local policy
- financial and housing options

There will be speakers, marketplace stalls showcasing local services and resources and an opportunity to connect with others. Morning tea, lunch and afternoon tea will be provided.

Banyule Ageing Well Housing Forum

 Friday 14 March, 8.45am – 3.30pm

 Council offices, Level 4,
1 Flintoff Street, Greensborough

How to register:

Choose a full-day ticket or register for sessions based on your interests. This a free event, bookings essential at trybooking.com/1334281 or phone **9490 4222**.

Bookings open 18 February.



Plan your visit with Cérge

Cérge is a digital concierge for people with disability and it's now available at two Banyule venues – WaterMarc and Ivanhoe Library & Cultural Hub.

This online support sidekick has accessibility tools to plan your visit with confidence and help you communicate once you're at the venue.

You can also use Cérge to let customer service staff know you're on your way and to request adjustments to ensure your visit is a great one.

Cerge tools include:

- visual story
- sensory guide
- audio guide
- accessibility guide
- keyword sign boards
- communication boards

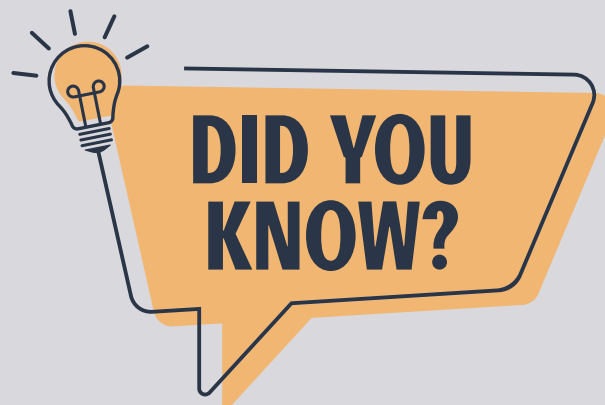


More information

WaterMarc: cerge.app/inclusivevenue/WaterMarc-Banyule or scan code



ILCH: cerge.app/inclusivevenue/Ivanhoe-Library-and-Cultural-Hub or scan code



Banyule's romance with retail

Valentine's Day is all about love and romance and it's also a key day for retailers across Banyule.

In the 2021 Census, approximately 5200 Banyule residents were employed in retail. That represents 8% of employed people aged 15 and over.

Find out more about your community

Banyule's Community Profile page has all sorts of interesting facts drawn from the Australian Census. Learn about Banyule's population, age structure, ancestry, religion, income, employment, housing and much more.

Scan the code or head online to profile.id.com.au/banyule



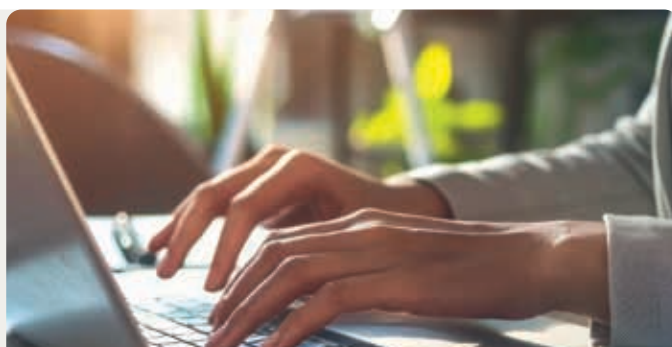
Banyule Business

Boost your online presence

This course is for small business owners and entrepreneurs who want to master social media and create compelling content. You will create a social media and content marketing plan to attract more customers and help drive your business goals.

You will learn to:

- choose the right platform to reach your target market.
- curate and create content that engages your audience.
- enhance your content marketing social media skills



Social media and content marketing

📅 Wednesday 26 February, 10am – 1pm

📍 Council offices, level 4,
1 Flintoff Street, Greensborough

Free workshop, bookings essential:
scan the code or head to
banyulebusiness.com.au



Summer / autumn bike skills classes



Learn to ride or improve your skills to ride for fitness, fun and sustainable transport. Our bike skills classes are open to all who live, work or study in Banyule.

Hands-on bike maintenance

📅 Sunday 23 February, 2pm – 4.30pm

📍 Macleod Community Hall

📅 Thursday 3 April, 6pm – 8.30pm

📍 Bellfield Community Hub

Bring your bike and learn how to keep it in top condition – fixing a puncture, chain care and more. For ages 13 upwards (teenagers to be accompanied by an adult).

Cost: \$25, \$15 concession

Book: trybooking.com/1264221



Individual bike skills sessions

📅 Saturday 15 March, choose a 50min session between 9am and 3pm

📅 Sunday 13 April, choose a 50min session between 9am and 3pm

📍 Yulong Reserve, Bundoora

For adults and children aged 7+ who want to learn to ride and riders with basic skills who want to improve their confidence.

Cost: \$25, \$15 concession

Book: trybooking.com/1264231



Urban cycling confidence

📅 Saturday 15 February, 10am – 3pm

📍 Ivanhoe Library & Cultural Hub

📅 Sunday 16 March, 10am – 3pm

📍 La Trobe University, Bundoora

📅 Saturday 12 April, 10am – 3pm

📍 Ivanhoe Library and Cultural Hub

Learn to ride with confidence on the road. Includes on-road riding in light traffic.

Cost: \$25, \$15 concession.

Book:

Ivanhoe: trybooking.com/1264199

Bundoora: trybooking.com/1269293



Ivanhoe

Bundoora

Get your school in on the act

Our Active to School program helps students and families enjoy the health, wellbeing, environmental and cost-saving benefits of safe and active travel to and from school.

This flexible and easy-to-deliver program runs in a four-week block during a school term. It can be delivered as a stand-alone program or in conjunction with other sustainability initiatives such as Ride to School Day (21 March) or Fuel-free Fridays.

Council's Sustainable Transport team works with staff and student leaders to tailor the program to the needs of your school. We provide resources such as safe walking maps, footpath decals, posters, communications and curriculum links. We can also help with small-scale events for your school community.

Register your school

Contact our education officer to discuss ideas for your school.

Scan the code or email:

activetravel@banyule.vic.gov.au



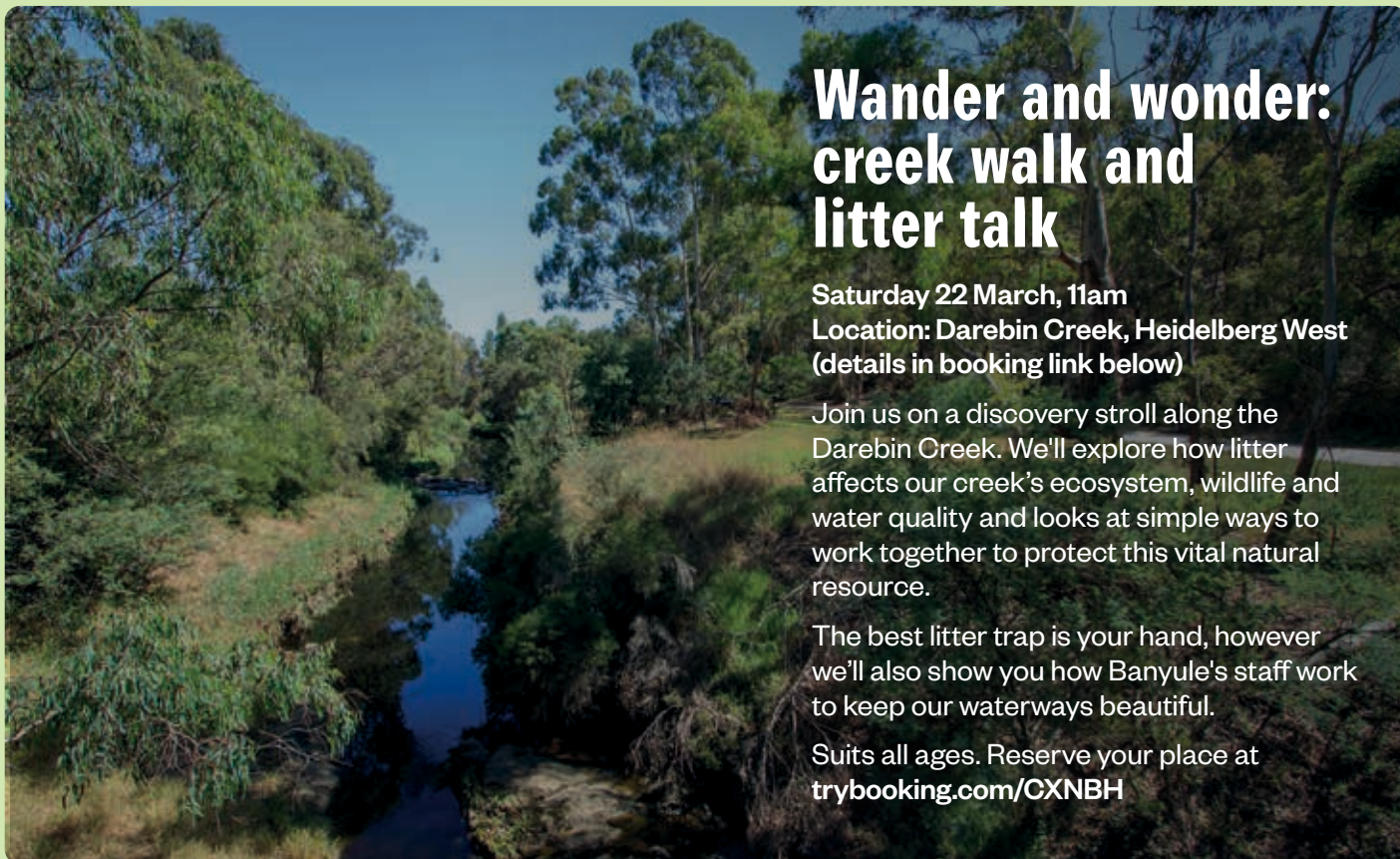
Towards zero waste

March is a big month in waste. We're working towards our goal of zero waste to landfill by 2030.

We're also saying no to litter this month, in line with Clean Up Australia Day, Earth Hour, World Water Day and the International Day of Waste.



Community Vision 2041
Priority Theme



Wander and wonder: creek walk and litter talk

Saturday 22 March, 11am

Location: Darebin Creek, Heidelberg West
(details in booking link below)

Join us on a discovery stroll along the Darebin Creek. We'll explore how litter affects our creek's ecosystem, wildlife and water quality and looks at simple ways to work together to protect this vital natural resource.

The best litter trap is your hand, however we'll also show you how Banyule's staff work to keep our waterways beautiful.

Suits all ages. Reserve your place at trybooking.com/CXNBH

To the bin and beyond

 Wednesday 12 March, 1.45pm – 2.45pm

 Rosanna Fire Station Neighbourhood House

Do you have burning questions about waste?
Where does it go? What happens to it?

Learn how to reduce, reuse and recycle.

Bookings essential: scan the
code, phone **9458 1935** or visit
banyule.vic.gov.au/Waste101



Towards zero waste workshop: Bee-ing sustainable and spending less

 Wednesday 26 March, 5pm – 7pm

 Watsonia Neighbourhood House

Feeling the financial pinch? Reducing your
waste can also reduce your expenses.

Join us for a workshop about making small
changes with big impacts. You'll learn how to
make beeswax wrap to take home. It's a simple
craft which can reduce your need for cling wrap.

Book at trybooking.com/CXZFO



A to Z of waste

Check out the new A to Z waste guide on our website. It's your one-stop shop for tricky waste items. Find out the right bin to use for different items or if there is a better option for disposal. Learn your A to Z and help Banyule get towards zero waste at banyule.vic.gov.au/WasteGuide



Cashing in containers

Victoria's Container Deposit Scheme has recycled more than 900 million containers since launching last year. Individuals and community groups can raise money by collecting the 10c refunds. There are four reverse vending machines in Banyule:

- Greensborough Plaza upper and lower carparks
- Heidelberg West, The Mall
- Macleod YMCA carpark.

Find out more about vending machines and places that accept over-the-counter deposits at cdsvic.org.au/locations



Waste education sessions for your school

We are taking bookings for waste incursions at schools during terms 2 and 3. We run hands on, curriculum-driven programs around waste, litter and taking care of our beautiful environment. If this is something your school may be interested in, please email us at rethinkwaste@banyule.vic.gov.au



So hot right now

Have you spotted the fiery new look on our waste trucks? They are a burning reminder to never bin your batteries. Batteries and other e-waste can cause fires in waste trucks and processing facilities, which is not safe for our drivers or anyone nearby. Learn more about recycling batteries and e-waste at banyule.vic.gov.au/ewaste

Twilight Sounds

FREE
EVENT

Saturday 15 February, 3pm – 10pm
Heidelberg Park Oval

Fantastic free and sensory-friendly concert with Australian musicians playing different styles of music. Food trucks on site, roving performers and free creative play for kids.

Access and inclusion

The festival is fully supervised and promotes a culture of safety and inclusion.

- Accessible and sensory-friendly parking and drop-off on Beverley Road
- Accessible toilets
- Wheelchair/scooter charging station at info tent
- Large screen for better viewing
- Phonic Ear system and noise-cancelling headphones at info tent
- High visibility on-site event and emergency staff

Before you arrive

- This is a drug-free and smoke-free event
- Bring a picnic rug and a water bottle to refill
- No marquees, umbrellas or gazebos
- Alcohol is permitted – please be responsible
- No glass

Proudly supported by



Featuring:

Mitch Tambo
The Bamboos
WILSN
Shaun Kirk
Gusto Gusto
DJ MzRizk
The Delvenes

Live Music Australia – an Australian Government initiative

Annual Community Satisfaction Survey

Each year, all councils in Victoria participate in a Community Satisfaction Survey to track performance and improve our community services.

The 2025 survey will be conducted by Metropolis Research in late January and February.

Around 400 randomly selected Banyule residents will be invited to provide feedback through a door-to-door survey, not by telephone as in previous years. Residents will be asked to share their views on Council's services and areas of importance. Participation is optional, anonymous and appreciated.

Scan the code to check the results of the 2024 survey and see how Banyule compares.



Ivanhoe Library & Cultural Hub

Events & activities

📍 275 Upper Heidelberg Rd, Ivanhoe
🌐 banyule.vic.gov.au/ILCH
✉ arts@banyule.vic.gov.au
📞 9490 4222

Art Gallery 275: Wed to Fri 10am – 5pm, Sat 10am – 4pm, Sun 11am – 4pm (Mon & Tue closed)
Loft 275: open during library hours



2025 Banyule Art Salon



Calling all Banyule-based artists! Our biggest open-call community art exhibition is on again.

Every two years, we put out the call to artists (visual artist, maker, writer, performer) for the Banyule Art Salon.

This is an opportunity for any artist in our community to participate in a professionally-curated and programmed exhibition in a museum-standard art gallery.

Banyule Art Salon is not a selective exhibition; all eligible artworks will be exhibited. Please read the terms and conditions of entry to determine eligibility.

The exhibition will be held in Art Gallery 275 at Ivanhoe Library and Cultural Hub in May.

Entries close Friday 31 March. Online entries only.

Entry fee: \$35 per entry, up to two per person.

For further information and entry form visit banyule.vic.gov.au/BanyuleArtSalon

terra (installation)

by **Cobie Orger with Alice Cummins**

20 Feb – 3 March

Opening night event: Thursday 20 February, 6pm

Artist conversation Q&A: Saturday 22 February, 3pm

terra is a 3-channel video installation inspired by the live work of the same name by influential choreographer/performer Alice Cummins. This immersive screen work weaves sound, sculpture and dance into a choreographed sequence of topographic and physical landscapes that express our relationship with, and concern for, Country.

This project is proudly supported by a Banyule Arts & Culture Project Grant.



(film still) from terra (installation)
video by Cobie Orger.

Light the Night Malahang Lantern Festival

5pm – 10pm, Friday 21 March & Saturday 22 March
Malahang Reserve, Heidelberg West

Malahang will be transformed into an illuminated dreamland with a canopy of glowing multi-coloured trees. Everyone gets to explore and have fun at this free event for all ages and abilities.

Wander with roving puppets and more than 50 lanterns by legendary artist The Lanternist. Experience First Nations performers Neon Ngargee in a celebration of Kulin Nations dance and songs, directed by Amos Roach.

- Lantern workshops – take yours home!
- Fire breathers
- Neon face painting
- Neon mini golf
- Food trucks
- No smoking. No pets in the lantern area.
- Limited street parking.

Proudly supported by



Harmony Bazaar

FREE
EVENT

Saturday 15 March

Markets and music workshops: 12pm – 3pm

Movie: 3pm – 5pm

Binnak Park, Anderson Parade, Watsonia North

Join us at this free, colourful and family-friendly event. It's a day to celebrate the people of many different cultures that make up our rich and diverse community, in the lead-up to Harmony Week.

There will be multicultural market stalls, food vendors, music workshops and belly dancing classes. We'll end with a free movie screening of *Ferdinand* (rated G).

Find out more at
banyule.vic.gov.au/HarmonyBazaar

Ward Rounds

Banyule is made up of nine wards. To find out which ward you belong to scan the code



Cr Peter Castaldo
Griffin Ward

peter.castaldo@banyule.vic.gov.au
0466 502 698

I recently checked out the East Ivanhoe shopping village streetscape upgrade with some of the local traders. The changes are significant, with new safer crossings, pavements and a more pedestrian-friendly environment. I look forward to the new street trees being installed in the cooler months. The new East Ivanhoe Preschool will be ready for class this term.

With the additional space, we're able to offer more kinder places than previously. See more about the project on [page 9](#).

The new building uses environmentally sustainable design and materials, helping us towards our goal of being a carbon neutral organisation without relying on offsets by 2028, and having a carbon neutral community by 2040.



Cr Alison Champion
Sherbourne Ward

alison.champion@banyule.vic.gov.au
0466 486 593

Bonds Road in Lower Plenty is looking great after a \$245,000 upgrade. We've resheeted the road, constructed speed humps and asphalted the drains along the length of Bonds Road between Old Eltham and Rosehill roads, making it safer in all weather conditions. It's just one small but important job in Council's \$65 million 2024/25 capital works program, which

includes \$16.68 million for roads, footpaths and bridges. Other 2024/25 road improvements in Sherbourne include Cressy Street, Grand Boulevard, Rattray Road and Sherbourne Road in Montmorency and Lower Plenty Shopping Centre carpark. We've completed designs for a carpark in Montmorency Park and we're working on plans for a shared path on Fitzsimons Lane, Lower Plenty.



Cr Matt Wood
Hawdon Ward

matt.wood@banyule.vic.gov.au
0403 705 289

As a new councillor, I've quickly realised how far Council services reach and how they impact everyone in our community.

Banyule's 1000+ staff provides more than 100 services, delivering around 25% of all public services while managing approximately 4% of the total public budget – no small feat! There's much to accomplish. One of my priorities is to address parking

issues resulting from the North East Link construction, among other NEL issues. Banyule Theatre site discussions are also underway.

My family and I had a wonderful time at December's Carols by Candlelight, Banyule's biggest ever! I hope I'll see you at a community event soon. I look forward to a productive 2025 as we continue to serve our community together.



Ward Rounds



Cr Elizabeth Nealy
Beale Ward

elizabeth.nealy@banyule.vic.gov.au
0435 243 598



From art to community facilities and sport, there's lots going on in Beale.

I enjoyed being part of the unveiling of the *Tree of Life* mosaic created by the Leith Park Mosaic Group. Congratulations to accomplished local artist Jacquie Hacansson, who mentored the group.

It's a beautiful feature for St Helena's Leith Park Retirement Village.

Both the Anthony Beale Reserve pavilion and the Greensborough Park pavilion upgrades are due to be completed in the coming months.

It was great to join the 60th celebration for Greensborough Junior Football Club recently at Anthony Beale Reserve - here's to many more years of sports and connection in the renewed pavilion!



Cr Mark Di Pasquale
Bakewell Ward

mark.dipasquale@banyule.vic.gov.au
0481 002 299



Council is making big improvements to community facilities in and around Bakewell to make it easier for more people to enjoy an active lifestyle.

We've completed a \$250,000 upgrade of the pavilion at Greensborough War Memorial Park. Nearby, work has started on accessible changerooms at Greensborough Park pavilion, a boost for St Mary's Junior Football Club and Riverside Cricket Club.

We've installed new irrigation at Elder Street Reserve in Watsonia and it's looking fresh for the coming season, ready for home teams and the wider community to enjoy.

The \$170,000 upgrade will have long-term benefits by watering more efficiently, saving water and improving the health of the grass.

Please let me know your ideas for Bakewell - I'd love to hear them!



Cr Alida McKern
Chelsworth Ward

alida.mckern@banyule.vic.gov.au
0435 316 318



Volunteers contribute so much to community life in Banyule.

Ryder-Cheshire Ivanhoe Homes in Donaldson Street has been running on volunteer power since 1981.

It provides low-cost accommodation for people from country areas who travel to Melbourne for medical treatment. Apart from managers Sandra and Leila, the homes are staffed by volunteers.

Student volunteers Kingsley, Bahgeha and Occero live onsite. They love the vibrant, supportive community and find the work extremely rewarding.

Thank you to all the volunteers who keep Ryder-Cheshire running. They'd love to hear from new volunteers for roles in administration, maintenance, gardening and hosting activities for guests - phone **9254 2400** or email office@rydercheshirehomes.com.au

Banyule is made up of nine wards. To find out which ward you belong to scan the code



Cr Mary O'Kane
Olympia Ward

mary.okane@banyule.vic.gov.au
0403 748 092

Thank you to all who strengthen our Olympia Ward community, especially through neighbourly connections. Congratulations to Banyule Community Health and Merri Health who announced their merger recently. I look forward to supporting Council's continued engagement with this new organisation. In the coming months I'm hoping to get to know all

the service providers who engage with our amazing community. At Launch Housing Bellfield's first anniversary it was great to speak with residents who are enjoying how their lives are taking new and positive directions now they have stable and enjoyable living situations. Read the story on **page 11**.

Image: At Launch Housing anniversary with resident, Georgia.



Cr Rick Garotti
Grimshaw Ward

rick.garotti@banyule.vic.gov.au
0402 846 845

Council manages infrastructure assets valued at \$986 million, including roads and footpaths, drainage networks, buildings and parks and gardens. It's a responsibility we take very seriously. We must deliver the facilities and services our community needs, while planning for the future and reining in costs wherever possible. Our community told us they wanted Council to concentrate on maintaining

and making the most of existing assets. Around 90% of our Capital Works program is devoted to asset renewal and upgrades. One of the most precious assets in Grimshaw is Gresswell Forest and Greenwood Reserve, where Council has completed new fencing along Greenwood Avenue. Read more about our work on the new Budget and Asset Plan on **page 7**.



Cr Cr Alicia Curry
Ibbott Ward

alicia.curry@banyule.vic.gov.au
0403 736 326

This lemon-scented gum in Rosanna made the shortlist of the 2024 National Trust Victorian Tree of the Year. Its wrinkly trunk is a unique variation of this species. It is one of more than 800 trees on Banyule's Significant Tree Register. The register includes plants that are rare or unique, are of habitat value, are outstanding

examples of their species or have cultural or historical significance. Plants on our Significant Tree Register have extra protection under Banyule's planning scheme. Did you know you can nominate trees for consideration? Check Council's website for details: banyule.vic.gov.au/SignificantTrees Turn to **page 5** for more on how Council is caring for our urban forest.





Platypus Proud Lips by Aunty Judy Nicholson.

Biderap – dry season

There's a lot of beauty and changes in nature to be appreciated during Biderap.

Biderap arrived in January and will last until the end of February. One of the seven Wurundjeri seasons, it is the hottest time of year.

Cherry ballart (native cherry) fruit is ripening and can be eaten as a snack if you come across it on a walk. It's a partial parasite, meaning it only takes water and mineral salts from its host plant. The wood is used to make Woomera (spear throwers), which were used both as shields and weapons.

The long, dry grasses of Bobat (tussock-grass) can be used to make string for nets, bags, baskets and mats.

Female common brown butterflies emerge late in February to lay their eggs. Mirrim (kangaroos) are breeding and we'll see Bubup Mirrim (joeys) leaving their mothers' pouches when Poorneet (tadpole season) arrives in September.

Towards the end of Biderap, juvenile Dulai Wurrung (platypus) start emerging from their burrows. Keep an eye out at night for wandering Waring (wombats).

Luk (eel) season arrives in March.

Towards Treaty

Treaty is one of three critical reforms called for as part of the Uluru Statement from the Heart, which Banyule Council unanimously adopted in 2022.

What do we mean when we talk about Treaty?

Treaty is a formal agreement between First Nations people and the government. Treaty will enable Aboriginal communities to advocate for themselves on the issues and decisions that affect them.

In Victoria, the First Peoples' Assembly of Victoria is leading Treaty talks with the Victorian Government and Aboriginal Victorians.

What's been happening?

Last year, the journey towards Treaty in Victoria took big steps. Aboriginal people from across Victoria developed priorities the Assembly would take to Treaty negotiations.

The Yoorrook Justice Commission met with community members from Barrbunin Beek Aboriginal Gathering Place in Heidelberg West to hear and record their experiences of racism and discrimination. Yoorrook recognises that there can be no Treaty without truth telling. It will deliver its final report later this year.

In November, Treaty negotiations officially opened.

Learn more at firstpeoplesvic.org/treaty-explainer

Bushland Diaries

Restoring indigenous grasses

Simonelli Reserve, Eltham North

Banyule's indigenous grasses play a crucial role in maintaining the balance of ecosystems.

Over summer, you may have noticed many different grasses producing seed heads throughout Banyule. Victoria's southeast has a rich variety of indigenous grasses that are essential to our ecosystems. They have evolved to thrive in diverse environments, from coastal plains to mountainous highlands, and are integral to the state's flora and fauna.

Indigenous grasses provide vital habitat and food for a wide range of native animals, including insects, birds and mammals. Their deep root systems help prevent soil erosion, improve water infiltration and maintain soil health. Additionally, a lot of these grasses are adapted to survive harsh conditions, such as the droughts and seasonal fire cycles that are common in many parts of Victoria.

The most common grasses we see in Banyule include kangaroo grass (*Themeda triandra*), wallaby grasses (*Rytidosperma* spp.), spear grasses (*Austrostipa* spp.) and tussock grasses (*Poa* spp.)

Many indigenous grasslands in Victoria have been lost or degraded due to urban development, agriculture and invasive species. The introduction of exotic grasses has further disrupted the delicate balance of our ecosystems.

Council's Bushland Management Unit has implemented conservation efforts to restore indigenous grasses, with the focus on re-establishing grasses and controlling invasive species.



Kangaroo grass



Wallaby grass



Silky blue-grass (*Dicanthium sericosum*)

If you would like to learn more and get involved with conservation efforts in Banyule's bushland reserves, scan the code or visit banyule.vic.gov.au/FriendsGroup



Twilight SOUNDS

2025

LIVE MUSIC &
FOOD TRUCKS

**SATURDAY
15 FEBRUARY**

3PM – 10PM

Heidelberg Park Oval, Beverley Road

Live Music Australia – an Australian Government initiative

Contact us

All enquiries

PO Box 94, Greensborough, VIC 3088
Phone **9490 4222**
enquiries@banyule.vic.gov.au
banyule.vic.gov.au

Council Service Centres

Greensborough – 1 Flintoff St
Ivanhoe – 275 Upper Heidelberg Rd

Hearing or speech impaired

Call us through the National Relay Service on **133 677** (TTY) or **1300 555 727** (ordinary handset) and contact **9490 4222**.

Interpreter service

إذا كنتم بحاجة إلى مترجم يرجى الاتصال
بالخط القومي للترجمة الهاتفية على الرقم
131 450 وطلب إيصالكم ببلدية بانول على
الرقم 9490 4222.

如果你需要一名翻译, 请打电话到国家电话翻译服务处 (TIS National) 131 450, 再转接到 Banyule 市政府 9490 4222

若你需要口譯員, 請致電 131 450 聯絡 TIS National, 要求他們為你致電 9490 4222 接通 Banyule 市政廳。

Ako vam je potreban tumač, molimo vas, nazovite TIS National na broj 131 450 i zatražite da vas se spoji sa Vijećim općine Banyule na broj 9490 4222.

Se hai bisogno di un interprete chiama TIS National al numero 131 450 e chiedi di essere messo in comunicazione con il Comune di Bayule al numero 9490 4222.

Αν χρειάζεστε διερμηνέα τηλεφωνήστε στην Εθνική Υπηρεσία Διερμηνέων Μεταφραστών στον αριθμό 131 450 και ζητήστε να σας συνδέσουν με τη Δημαρχία Banyule στο 9490 4222.

Ако ви треба преведувач ве молиме јавете се на TIS NATIONAL на 131 450 и замовете да ве поврзат со Banyule Council на 9490 4222.

Haddii aad u baahan tahay mutarjum wac khadka qaranka oo ah TIS 131 450 weydiina in lagugu xiro Degmada Banyule tel: 9490 4222.

Nếu cần thông dịch, xin gọi cho TIS Toàn Quốc qua số 131 450 rồi nhờ họ gọi cho Hội Đồng Thành Phố Banyule theo số 9490 4222 giúp quý vị.