

# Banyule Banner

- 3 Rosanna Library
- 5 Recycled roads
- 12 Shape Banyule's future

May/June 2024



# Mayor's Message

Mayor Cr Tom Melican



During my time on Council I can't remember a busier time with such an enormous amount of change and planning happening at the same time.

Advocating on behalf of our community and delivering the right outcomes is vital and we need as much input and assistance from as many people as possible to ensure we get the planning correct. I urge you to be involved if possible.

## Banyule Futures

It has never been easier to get involved and have your say about how you want things to be in Banyule.

We received more than 350 applications for Banyule's first ever ThinkTank and we're embarking on a round of community consultations that we hope will reach every corner of our community. Turn to **page**

**12** to learn how you can influence plans for Banyule's future and get involved online or in-person at workshops in your area.

## Cats and dogs in public places

Love for our animal companions runs deep in our community and we know that many of you will be interested in Council's Public Order Review of cats and dogs in public places.

We are considering a number of new ideas with the welfare of animals and the community in mind. We haven't made any decisions yet and there is still time to have your say; find out how on **page 4**.

## Advocating for our community

Council continues to fight harder and smarter for our community. We believe we know our community better than anyone and it is our

job to represent your interests and fight for what is best for Banyule.

As the North East Link cuts a swathe through Banyule, we continue to negotiate for better outcomes for our community. Read about our efforts on Watsonia Station and replacement tree planting on **page 6**.

## Delivering our Budget

I am proud that Banyule Council is known for responsible financial management. Maintaining this reputation and providing for our community is front of mind as we work on the next Budget.

We'll consider the draft Budget at our 20 May council meeting. You'll then have a chance to comment before the final Budget is presented at our 24 June meeting. Stay up to date at **shaping.banyule.vic.gov.au/DeliveringOurBudget**

## Stay in touch with us online

 Email newsletters

[banyule.vic.gov.au/subscribe](http://banyule.vic.gov.au/subscribe)




@BanyuleCouncil

## Have your say on important projects and local initiatives

 [shaping.banyule.vic.gov.au](http://shaping.banyule.vic.gov.au)

COVER: Resurfacing Erskine Road, Macleod, with a mix of recycled plastics and asphalt. Story on page 5.

## Council Meetings

 Upcoming dates:  
20 May  
3 June

 From 7pm

 Council Chambers @ Ivanhoe Library and Cultural Hub,  
275 Upper Heidelberg Road,  
Ivanhoe

For agendas, minutes, public question time and request to speak forms, visit **shaping.banyule.vic.gov.au/CouncilMeetings**

Banyule City Council is proud to acknowledge the Wurundjeri Woi-wurrung people as Traditional Custodians of the land and we pay respect to all Aboriginal and Torres Strait Islander Elders, past, present and emerging, who have resided in the area and have been an integral part of the region's history.

Our community is made up of diverse cultures, beliefs, abilities, bodies, sexualities, ages and genders. Council is committed to access, equity, participation and rights for everyone; principles which empower, foster harmony and increase the wellbeing of an inclusive community.





# New chapter for Rosanna Library

**We're starting a new chapter for Rosanna Library as we demolish the old building to make way for the new library.**

It will be double the size of the old library, with a spacious children's area, co-working and study spaces, community meeting rooms, Maternal and Child Health services, Banyule Toy Library and more. Construction of the three storey, 1,600sqm building, delivered in partnership with Woolworths, will take approximately 18 months.

Check out the fit-out and designs for the new library at [shaping.banyule.vic.gov.au/RosannaLibrary](https://shaping.banyule.vic.gov.au/RosannaLibrary)

In the meantime, the temporary library in Beetham Parade is keeping Rosanna residents connected and well-read.

## Rosanna Library pop-up 56 Beetham Parade, Rosanna

**Hours:** Monday to Friday, 9am – 5pm  
Late night Thursday until 8.30pm  
Saturday, 10am – 5pm

## Get the best of Banyule to win!

**Every month we publish a handy eNewsletter packed full of local events, news and updates across Banyule. If you're a subscriber, you could win!**

This is the last month we're giving away \$50 shop local giftcards – win one and have brunch on us! It's our way of saying thank you for staying connected with what's happening in your community.

To be in the running to win, subscribe to Banyule eNews. If you're already a subscriber, you're already in the draw.



Sign up at [banyule.vic.gov.au/subscribe](https://banyule.vic.gov.au/subscribe) to get news to your inbox & a chance to win!



# Shaping Banyule

Get involved in local projects and consultations



## Have your say on housing and neighbourhood character

**Banyule's draft Housing Strategy and draft Neighbourhood Character Strategy are evidence-based, data-driven and responsive to what the community told Council it values.**

They balance protecting landscapes and neighbourhood character with the need to ensure sustainable housing growth and diversity for our current and future community. Have your say online **until 26 May** or attend an information session to speak with Council officers and find out more.

### Information sessions

📅 Thursday 16 May, 6.30pm – 8pm

📍 Council offices, 1 Flintoff Street, Greensborough

📅 Tuesday 14 May, 6.30pm – 8pm

📍 Ivanhoe Library and Cultural Hub



For more information and opportunities to participate, visit [shaping.banyule.vic.gov.au/HNC](https://shaping.banyule.vic.gov.au/HNC) or scan the code.

### Your Council contact:

**Emma Butterworth**, Senior Strategic Planner

Phone: **9422 6129**

Email: [strategic.planning@banyule.vic.gov.au](mailto:strategic.planning@banyule.vic.gov.au)



## Public Order Review – dogs and cats in public places

Thank you to all who participated in the survey in late 2022. Your input helped us better understand community needs and concerns around the management of cats and dogs in public places.

Now we're inviting you to get involved and tell us what you think about some new ideas, including a cat curfew and requirements to have dogs on lead in a variety of public spaces.

Our aim is to promote responsible pet ownership and enhance safety for the community and animals alike.

Find out more at our drop-in session or complete the survey online.

### In person drop-in session

📅 Wednesday 8 May, 4pm – 7pm

📍 Ivanhoe Library and Cultural Hub

### Online survey

Open until 12 May at [shaping.banyule.vic.gov.au/PETS](https://shaping.banyule.vic.gov.au/PETS) or scan the code below.

### Your Council contact:

**Justine Busuttill**, Municipal Laws & Public Assets

Coordinator

Phone: **9490 4273**

Email: [justine.busuttill@banyule.vic.gov.au](mailto:justine.busuttill@banyule.vic.gov.au)







# East Ivanhoe transformation underway

**The first stage of the East Ivanhoe shopping village streetscape is already complete – we’ve updated the layout and fixed drainage problems in the Burton Street carpark.**

The streetscape upgrade is on track to be finished by the end of the year. Both sides of the Lower Heidelberg Road shopping village will be improved with new footpath surfaces, safer pedestrian crossings and seating.

To see the construction stages and get project updates, visit [shaping.banyule.vic.gov.au/EastIvanhoe](https://shaping.banyule.vic.gov.au/EastIvanhoe)



## Banyule roads to recycling

It feels great to drive or cycle on a freshly-made road – and it’s an even better feeling when that road is made from recycled materials!

We’re helping to pave the way to a more sustainable future by resurfacing part of Erskine Road in Macleod with a mix of recycled plastics and asphalt.

The RMIT University-led project – supported by the Australian Research Council, Austroads and 10 Victorian councils including Banyule – incorporates recycled plastics into asphalt as a performance enhancer.

With Australians generating 2.6 million tonnes of plastic waste each year and landfill space expected to reach capacity by 2025, this project is helping to address an urgent waste challenge.

Research has shown that the plastic and asphalt mixes are mechanically and environmentally sound. The performance of roads can even be improved and made more durable by adding recycled material such as plastic and rubber. Banyule’s participation will help the RMIT project team to create best-practice guidelines on using recycled plastics in asphalt roads so that the recycling solution can be more widely adopted.



# Get on board Watsonia Station redevelopment

**Banyule Council is working with the Victorian Government to redevelop Watsonia train station while the North East Link is being built so the local community doesn't face prolonged disruptions.**

We're proposing a transformational redevelopment of Watsonia Station to take advantage of the one-off opportunity arising from the North East Link build.

The station needs to be upgraded now to fix accessibility problems.

A major redevelopment could also include:

- Residential and commercial development on top of the station
- Underground parking
- Better integration of the station with the new Watsonia Town Square
- More space for community facilities and services.

## Council says: Let us help replace trees removed for North East Link

**Many mature trees have been removed to make way for the North East Link.**

The North East Link Project (NELP) must provide two advanced trees to replace each canopy tree. Council wants to plant and maintain the replacement trees so that NELP can get on with building major roads.

We're seeking \$5.15 million from NELP to plant and maintain the replacement trees in Banyule. These new trees must provide canopy cover by 2045.

Where possible, replacement trees must be planted in the NELP area, followed by the surrounding

areas. If suitable locations are not found, the trees may be planted anywhere in Victoria.

We've identified space for more than 12,000 trees in Banyule streets and along paths where we need more shade. Council wants to care for the replacement trees for at least two summers to ensure they survive. Established plants are best as young tube stock can fail quickly. Council estimates a 90% failure rate in the first 12 months.

For more information visit [shaping.banyule.vic.gov.au/northeastlink](https://shaping.banyule.vic.gov.au/northeastlink)

### What's happening with the North East Link landscape plan?

We've advocated for better outcomes for Banyule as the North East Link is built. When the Urban Design Landscape Plan was released last year we made a submission calling for a lid over the trench, wider green bridges across the trench and more green spaces. The final design is yet to be handed down by Planning Minister Sonya Kilkenny. For updates, visit [shaping.banyule.vic.gov.au/northeastlink](https://shaping.banyule.vic.gov.au/northeastlink)



# Watsonia Town Square

We're so excited about what we are creating in Watsonia and we think you're going to love it too.

The most disruptive works, such as changes to Watsonia Road and the Morwell Avenue carpark, are on track to be finished mid-year. Work will start on a new playground, walkways, gardens, and toilet block on the library side of Watsonia Road.

The Town Square will be a welcoming open space for families, with play spaces, seating and more plants and trees. You'll have safer pathways between the shopping area, library and train station.

Watsonia shops are open for business and parking is available.

We've had a very positive response to the plans, which are based on feedback we received from the community when we asked what you wanted for Watsonia.

For project plans and updates, visit [shaping.banyule.vic.gov.au/WatsoniaTownSquare](https://shaping.banyule.vic.gov.au/WatsoniaTownSquare)



# Monty playground for all ages

## It's great to see families enjoying the new playground at Montmorency Park.

The play area off Para Road in Monty is one of eight playgrounds Council has renovated as part of its 2023/24 Playground Replacement Program.

The play area has been greatly expanded and has different activity areas for all ages and interests. There is new play equipment, climbing nets, an exercise station, basketball and netball rings and nature play areas. There's also seating, picnic tables and plenty of bike parking.

Please help the new grass and gardens settle in by staying out of the landscaped areas until they are established.



Before



After

# Building a better Banyule

Community sporting clubs are a vital part of life for many of us in Banyule, providing fun, fitness and community connection. Many sports grounds are popular for walking and other leisure pursuits and pavilions are used by community groups and for private functions too.

Here are just a few sporting projects Council has recently delivered or will have underway soon.



## A new pavilion for Macleod

Building is underway on the new pavilion at Macleod Park, home to the Macleod Junior Football Club and Macleod Cricket Club. It will have female-friendly changerooms, social and community spaces, kitchen, meeting rooms, toilets and storage, plus spectator viewing areas.

Delivering a pavilion to support community sport participation and growth is very important to Council and we thank the Victorian Government for its contribution of \$1.82 million towards this \$3 million project.

The new pavilion will be available for use by community groups and for private functions.



## Major renos at Ivanhoe Golf Club

Major upgrades at Ivanhoe Golf Club are now complete.

The clubhouse renovations took in the café and function room as well as accessibility improvements that bring the facilities up to standard and make the club accessible to everyone.

Sustainability features include electric appliances and water-sensitive design and landscaping in the carpark, which was redesigned and resurfaced.

The works were funded by Council, Sport and Recreation Victoria and Leisure Management Services, the contractor that runs the golf club.

## Turf's down at Warringal Park

The new grass is settling and football will soon be back at Warringal Park Oval in Heidelberg after a reconstruction of the playing surface, including new irrigation and drainage and fresh turf.

The oval is a high quality playing surface all year round for clubs including Heidelberg Football Netball Club, Heidelberg Junior Football Club and Heidelberg Cricket Club.

This \$2.4 million project was fully funded by Banyule Council.





## New rooms for Monty bowlers

Montmorency Bowling Club's 200+ members are enjoying the renovated clubrooms, including new kitchen, toilets and social spaces. Banyule Council funded \$1.2 million of the improvements to this Council-owned building and is grateful for an extra \$500,000 from the Victorian Government.

## Anthony Beale pavilion upgrade

We've completed detailed plans for the redevelopment of the pavilion at Anthony Beale Reserve in St Helena.

The plans include new changerooms, kitchen and canteen, a meeting room and new facilities for timekeepers and spectators. Anthony Beale Reserve is the home ground of Greensborough Junior Football Club, Auskick programs and is used for school sports.

The improved pavilion and function spaces will be available for use by community groups.



Artist's impression



## Olympic Park going for gold

### We've been working on a big transformation of the Olympic Park precinct in Heidelberg West.

Thanks to great work between Council, Heidelberg United Football Club and Olympic Colts cricket club that secured \$8 million in Victorian Government funding, the \$18.5 million project is set to be finished sooner than planned!

Local residents, clubs and the wider community will enjoy new and upgraded sporting and leisure facilities in the precinct. We've already completed:

- State-of-the-art soccer ground
- Synthetic mini-roofs soccer pitch
- Expanded 211 space car park
- New playground and community spaces

- 1956 Memorial Olympic Garden
- Futsal/basketball area
- Reconstructed northern cricket pitch and practice nets
- North and south ovals

A new slip lane entrance to the car park from Southern Road will open soon.

Next is a new pavilion between the two ovals. Construction will start next year and will take about a year to complete. The ovals will remain open during construction.

Stay up to date on the project at [shaping.banyule.vic.gov.au/OlympicPark](https://shaping.banyule.vic.gov.au/OlympicPark)



# Blankets reduce energy use

## We've installed pool blankets at WaterMarc to increase energy efficiency.

Blankets have been installed on the 50m and learn-to-swim pools and will be rolled out each night to retain heat in the water.

WaterMarc has four gas boilers that heat the pools and indoor areas at a cost of more than \$400,000 a year.

The blankets will reduce gas usage by an estimate 2300 gigajoules per year. The \$330,000 project was fully funded by Council.

Council is asking the Australian Government to help replace the gas boilers with an electric plant that will power WaterMarc and the 1 Flintoff office tower above it, which houses the Council offices and other tenants. The project will cost an estimated \$4 million. Council is seeking initial investment of \$2 million through the Community Energy Upgrade Fund.

Learn about Council's advocacy priorities at [banyule.vic.gov.au/Advocacy](http://banyule.vic.gov.au/Advocacy)

# BANYULE COMMUNITY FUND

**Thinking about hosting a fundraiser or making a tax-deductible donation before the end of the financial year? Make it count in your local community by donating to the Banyule Community Fund, a non-profit fund run by Banyule Council in partnership with the Australian Communities Foundation.**



We've raised more than \$22,500 and our goal is to reach \$40,000 by September. La Trobe Golf Club raised more than \$10,000 at one fundraising event, pictured.

## First grants coming up

A panel of volunteer community members will assess the grant applications and advise Council on who should receive a grant. The first grants will be made later this year to non-profit groups and projects that directly benefit Banyule residents in these priority areas:

- Housing and homelessness
- Emergency relief
- Mental health support
- Community connectedness and inclusion
- Food security
- Disability
- Climate change and environmental sustainability
- Arts and culture

## Get help to host a fundraiser

Contact Council on **9490 4222** and ask to speak with Banyule Community Fund Development Officer Catherine Corbett, or email [catherine.corbett@banyule.vic.gov.au](mailto:catherine.corbett@banyule.vic.gov.au)

Find out more at [banyule.vic.gov.au/BCF](http://banyule.vic.gov.au/BCF)







# Electrify Banyule

**Banyule residents Lisa and Brett were fed up with high gas bills for heating and hot water in their 1950s weatherboard home, so they applied to the Better Score grant program for an energy assessment and funding to help make improvements.**

They've upgraded their gas ducted heater with a split system, their gas hot water unit with a heat pump hot water heater and added ceiling insulation. By disconnecting from gas, Lisa and Brett are reducing their use of fossil fuels, saving money and avoiding the negative health impacts of using gas appliances. It will save them around \$700 a year, and they will barely be using more electricity because of efficient new appliances and the impact of insulation.

Lisa said: "There are so many options out there and every house and family is different so it can be confusing to know where to start. Having an expert come and assess makes things easy. Then, if you decide to go ahead, it's just about ticking things off

the list and enjoying the savings, lower emissions, and more comfortable home. And they help you pay for it."

To make your plan and find out about rebates and incentives visit [banyule.vic.gov.au/ElectrifyBanyule](http://banyule.vic.gov.au/ElectrifyBanyule)

## Be like Lisa and Brett. Electrify your home with a Better Score grant.

Banyule is committed to becoming a carbon neutral community by 2040.

If you're thinking about upgrading your home's energy efficiency, we are here to help!

Through the Better Score program, you can apply for a free home audit (valued at \$500) and a grant of up to \$1000 towards efficiency upgrades such as heat pumps, insulation and solar systems.

Applications are open from 1 – 19 July. Funding is limited to 60 applicants. If there are more than 60 applicants, recipients will be selected by ballot.

## Find out more about Better Score grants and Council programs to help you save on household energy usage.

Contact Banyule's Community Energy Officer.

Email: [energy.info@banyule.vic.gov.au](mailto:energy.info@banyule.vic.gov.au)

[banyule.vic.gov.au/ElectrifyBanyule](http://banyule.vic.gov.au/ElectrifyBanyule)  
or scan the code.



## Get the Greenwrap

Keep up with all Banyule's environmental programs and news in the Greenwrap, Council's environment e-newsletter.

Scan the code or head to [banyule.vic.gov.au/Greenwrap](http://banyule.vic.gov.au/Greenwrap)



# Banyule Futures

## Your Voice Our Future

# Banyule Futures is all about setting the direction for Council from 2025 to 2029.

## We've got some big plans we need to create:

- **Council Plan 2025 – 2029** (our big picture plan and priorities for 4 years)
- **Health and Wellbeing Plan** (what's needed to improve health and wellbeing in Banyule)
- **Budget and Financial Plan** (how to fund Council's work)
- **Asset Plan** (how we manage the many buildings and assets Council is responsible for)

The aim of these plans is to make Banyule a better place to live, work and visit so we want as many people as possible to have their say.

During May and June there will be heaps of opportunities to contribute. You can meet with Council staff face to face, attend an online workshop or take a short survey.

## Planning for places

Banyule's individual suburbs and places are unique and have their own character, needs and priorities. One of the ways we plan is to think of Banyule as a series of 7 precincts.

Each precinct has a dedicated page on Council's community consultation website, Shaping Banyule.

It has stats and data about the area, what we know about existing priorities and concerns and what is planned for the future.

We'll share this information with you at the community conversations taking place around Banyule and you will be able to provide feedback.

## Get involved

### Pop up discussions

Drop in at a location near you, chat with staff about living in the area and be rewarded for your participation. Each of our pop ups will be slightly different depending on the location. We'd love to see you there.

### Online survey

Our easy to use survey is open from Monday 29 April until Sunday 23 June.

Complete the survey at [shaping.banyule.vic.gov.au/BFMAYB](https://shaping.banyule.vic.gov.au/BFMAYB) and go in the draw to win one of 20 x \$50 gift cards.

### Workshops

We are running three workshops to talk about Banyule's Community Vision.

📅 **Wednesday 22 May, 6pm – 8pm**

📍 **Greensborough**

📅 **Tuesday 4 June, 6pm – 7.30pm**

📍 **Online**

📅 **Saturday 8 June, 10am – 12pm**

📍 **Ivanhoe**

Participants will be rewarded with a \$25 gift card. Registrations essential - scan the code or go to [shaping.banyule.vic.gov.au/BFMAYB](https://shaping.banyule.vic.gov.au/BFMAYB)



### West precinct

#### Heidelberg West, Heidelberg Heights, Bellfield

📅 **Friday 7 June, 2pm – 4pm**

📍 **Bell Street Mall**



Find out more at [shaping.banyule.vic.gov.au/BanyuleFutures/WestB](https://shaping.banyule.vic.gov.au/BanyuleFutures/WestB)



## North West precinct

**Bundoora, Watsonia,  
Watsonia North**

📅 1 – 29 May

📍 Self-service information  
at Watsonia Library

📅 Saturday 11 May, 10am – 2pm

📍 Diamond Village Arts Market

📅 Saturday 25 May, 10am – 1pm

📍 Watsonia Road (near IGA)

📅 Sunday 9 June, 9am – 1pm

📍 La Trobe Market



Find out more at

[shaping.banyule.vic.gov.au/  
BanyuleFutures/NorthWestB](https://shaping.banyule.vic.gov.au/BanyuleFutures/NorthWestB)

## North precinct

**Greensborough**

📅 Saturday 11 May, 11am – 3pm

📍 Greensborough Walk  
Mothers' Day market



Find out more at

[shaping.banyule.vic.gov.au/  
BanyuleFutures/NorthB](https://shaping.banyule.vic.gov.au/BanyuleFutures/NorthB)

## North East precinct

**St Helena, Eltham North,  
Briar Hill, Montmorency**

📅 Saturday 1 June, 10am – 2pm

📍 Were Street,  
Montmorency



Find out more at

[shaping.banyule.vic.gov.au/  
BanyuleFutures/NorthEastB](https://shaping.banyule.vic.gov.au/BanyuleFutures/NorthEastB)

## East precinct

**Yallambie, Viewbank,  
Lower Plenty**

📅 Thursday 13 June, 11am – 2pm

📍 Lower Plenty  
Shopping Centre



Find out more at

[shaping.banyule.vic.gov.au/  
BanyuleFutures/EastB](https://shaping.banyule.vic.gov.au/BanyuleFutures/EastB)

## Mid precinct

**Macleod, Rosanna,  
Heidelberg**

📅 Saturday 18 May, 10am – 1pm

📍 Warringal Centre

📅 Saturday 15 June, 9am – 1pm

📍 Macleod Market



Find out more at

[shaping.banyule.vic.gov.au/  
BanyuleFutures/MidB](https://shaping.banyule.vic.gov.au/BanyuleFutures/MidB)

## South precinct

**Ivanhoe, Ivanhoe East,  
Eaglemont**

📅 1 – 29 May

📍 Self-service information at ILCH

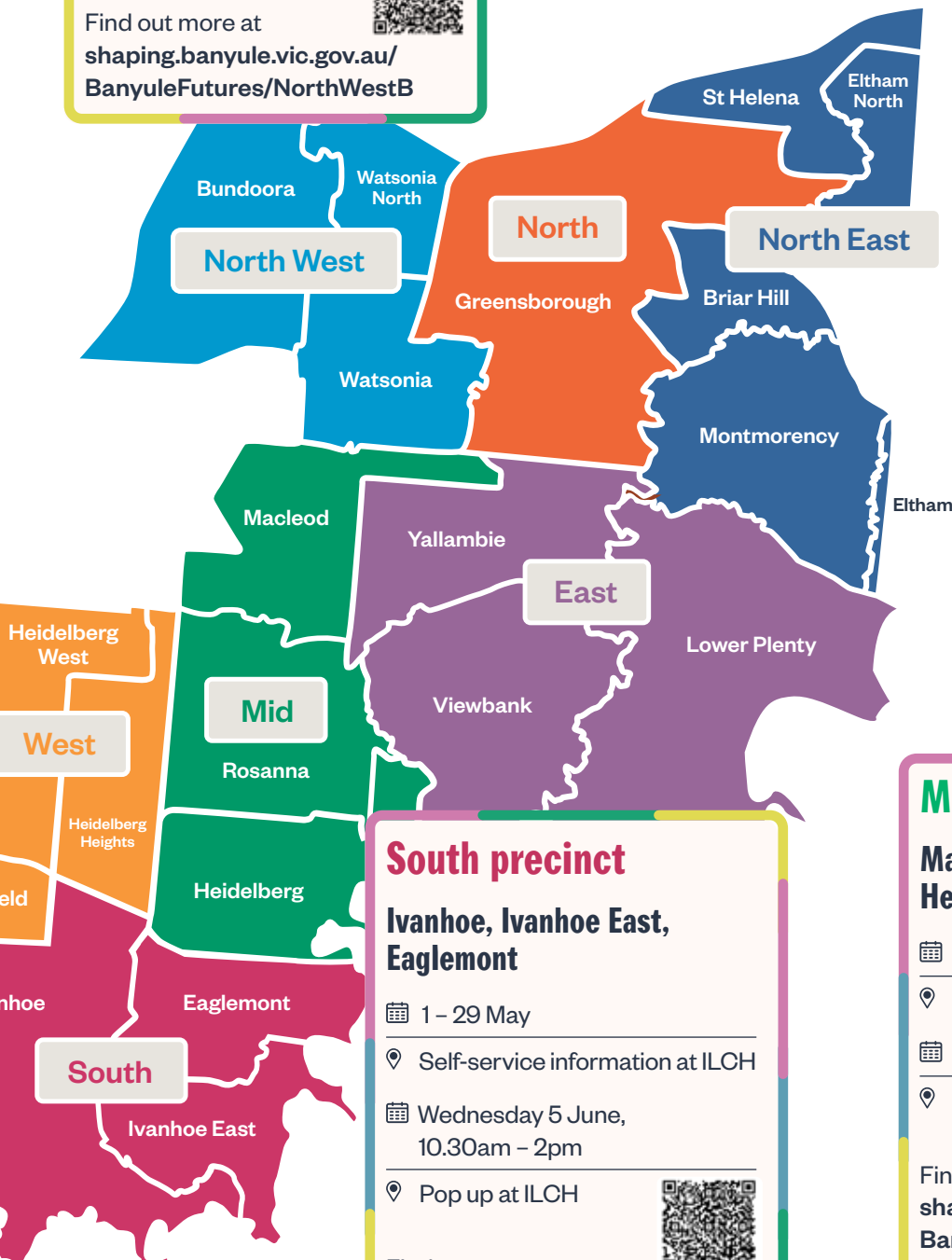
📅 Wednesday 5 June,  
10.30am – 2pm

📍 Pop up at ILCH



Find out more at

[shaping.banyule.vic.gov.au/  
BanyuleFutures/SouthB](https://shaping.banyule.vic.gov.au/BanyuleFutures/SouthB)





# New timetable for Banyule Community Bus

**You gave us feedback, and we listened. The Banyule Community Bus timetable is changing to a more efficient route with shorter travel times.**

The previous bus route that operated three days a week has been divided into two shorter loops over four days each week. This will reduce the travel time and increase the efficiency of the service.

## **New timetable from Monday 29 April**

### **North loop – Mondays and Wednesdays**

Looping through Bellfield, Heidelberg West, Heidelberg Heights, Macleod, Rosanna and Heidelberg

### **South loop – Tuesdays and Thursdays**

Looping through Ivanhoe, Bellfield, Heidelberg West, Heidelberg, Eaglemont and Ivanhoe East

View the routes and timetables at [banyule.vic.gov.au/CommunityBus](http://banyule.vic.gov.au/CommunityBus) or call Customer Service on **9490 4222**.

## **Aged Care services through Council**

**Banyule Council continues to deliver support to eligible local residents to help them to live in the community as independently as possible.**

My Aged Care is the gateway for people over 65 to access Commonwealth Home Support Program (CHSP) services. There is an eligibility assessment and referral process to get involved.

Home support services provided by Council as part of the CHSP include:

- Individual social support (shopping help, social outings)
- Delivered meals
- Property maintenance
- Home modification services

*Banyule Council is an accredited Rainbow Tick service provider.*



Find out more about Council's home support services at [banyule.vic.gov.au/Home-support-services](http://banyule.vic.gov.au/Home-support-services)

Contact My Aged Care to check your eligibility for services, phone **1800 200 422**.





# A clean sweep in autumn

Banyule's deciduous trees put on a stunning display over autumn, but heavy leaf fall is noticeable in some streets. Council's street sweepers regularly clear leaves and other debris from our streets.

During autumn, we allocate additional resources and you may see our street sweepers out more regularly in areas where we have higher leaf drop. Please be patient with us during this very busy period for our street sweepers.

## New map for smart travellers

Banyule's new TravelSmart map will soon be available. It shows on-road bike lanes, off-road shared paths, and safe bike routes, as well as walking paths, public toilets and public transport information, including tram and train routes.

### Updated in the new map

- Bike repair stations
- Drinking fountains
- Electric vehicle charging points
- Public toilets
- School crossings



Collect a map from Council customer service centres and libraries. You can also download the map from our website - scan the code or go to [banyule.vic.gov.au/TravelSmart](https://banyule.vic.gov.au/TravelSmart)

For maps of other municipalities head to the VicRoads website, [vicroads.vic.gov.au](https://vicroads.vic.gov.au)







# Heidelberg West grows with Tarakan

**It's great to see more residents returning to Olympia Ward with the opening of 130 affordable homes in Tarakan Street, Heidelberg West.**

Funded under the Victorian Government's Big Housing Build, the new homes replace housing built for the 1956 Olympics. This investment in public housing stock is changing lives for the better with the support of Housing Minister Harriet Shing MP, Member for Ivanhoe Anthony Carabines MP and community services organisation Uniting Vic.Tas.

## **Council advocating for support services**

There is a growing need for community services to support residents in the new housing.

Council is seeking Victorian Government funding to build an integrated services hub for residents in the 3081 postcode, which takes in Heidelberg West, Heidelberg Heights and Bellfield.

The area is forecast to have the highest population growth in Banyule over the next two decades and Council believes there are large parcels of state-owned land suitable for development to meet housing targets. In the past year, Heidelberg West has welcomed more than 220 new families in new social and affordable housing and the next project is the Bardia Estate next to Aldi on Bell Street.

A services hub could support the growing community with allied health and mental health services, financial counselling, disability support, family support and youth services.



## **Smart technologies initiate bright efficiencies**

New smart lighting technology at sports grounds around Banyule will enable more efficient use and maintenance of flood lights.

Council is installing the new smart controllers into energy-efficient LED lights at 24 sports fields, allowing real-time monitoring and automated fault detection alerts. Programmable remote controls will add to efficiencies in operation and quick turnaround times for maintenance.

Smart light technology will be rolled out at more Council parks in coming years.





## Banyule – who are we and what does the future hold for us?

Learn more about the community profile of Banyule at this free information session with a demographer who has a passion for understanding people and places.

Delve into the data and discover trends and population forecasts. Don't miss out on this chance to gain valuable knowledge about our community and what the future holds for us.

If you can't make it to this session or would like to explore population statistics head to [profile.id.com.au/banyule](https://profile.id.com.au/banyule)

### Community data in Banyule

Monday 20 May, 6pm – 7pm

Ivanhoe Library and Cultural Hub

Register your interest at  
[trybooking.com/CQJMV](https://trybooking.com/CQJMV)  
or scan the code.



## Thanking all volunteers

You are the spirit  
of our community

National Volunteers Week  
20-26 May 2024

2024  
BANYULE  
Volunteer  
CELEBRATION

# Support for carers

Do you provide regular unpaid help to a person with a disability, a chronic health condition or age-related needs?

Join our carer support program to recharge, discover support services and connect with fellow carers.

Registrations essential.

## Contact Banyule Carer Support Program

✉ carers@banyule.vic.gov.au

☎ 9422 8396

🌐 banyule.vic.gov.au/CarerSupport

## Free classes

### Yoga

📅 Thursdays, 9.30am – 10.30am

📍 Watsonia Neighbourhood House

### Art Therapy

📅 Fourth Tuesday of the month, 1pm – 2.30pm

📍 Watsonia Neighbourhood House

### Tai-Chi Qigong

Can be done standing or seated

📅 Fridays, 11am – 12pm

📍 Greenhills Neighbourhood House, Greensborough

## Coffee catchups

Come along for a chat with other carers over a complimentary coffee.

### For carers of people with dementia

📅 Wednesdays, 10.15am

📍 Healthlink Crew café, Greensborough

### For carers of a child with a disability

New Group

📅 Thursdays, 10am

📍 Mabel Jones café, Greensborough

### Carer support group

Morning tea provided

📅 Thursdays, 10.30am – 12pm

📍 Watsonia Neighbourhood House

### Older carers support group

New Group

Are you aged over 60 and looking after someone with a disability, chronic health condition, mental health issues or age-related care needs? Come for a chat with other carers over a complimentary coffee.

📅 Third Tuesday of the month, 10am

📍 For Change Café at Bellfield Community Hub



## Women in Business lunch

Dr Louise Mahler speaking on body language and communication

📅 Friday 24 May, 11am – 2pm

📍 The Centre Ivanhoe, 275 Upper Heidelberg Road, Ivanhoe

Tickets \$89, includes two-course lunch.

Complimentary sparkling wine on arrival for the first 100 guests. First 200 registrations receive a free pilates class at Living Energy Pilates

Scan the code to book



## CHRYSALIS bursts into life

As darkness descends, three grand chrysalides suspended from the trees come to life through a symphony of light, projection and sound. A captivating spectacle blending animation and nature footage, CHRYSALIS, by Lachlan Plain, is a window into a world of transformation and renewal.

Presented as part of Banyule's Art in Public Spaces Program which invigorates communal spaces and encourages us to think about our urban environment differently.

## CHRYSALIS by Lachlan Plain

📅 18, 19, 20, 25, 26, 27 June,  
from dusk each evening

📍 Kitchener Reserve,  
Norman Street, Ivanhoe





# Ivanhoe Library & Cultural Hub

## Events & activities

📍 275 Upper Heidelberg Rd, Ivanhoe

🌐 [banyule.vic.gov.au/ILCH](http://banyule.vic.gov.au/ILCH)

✉ [arts@banyule.vic.gov.au](mailto:arts@banyule.vic.gov.au)

☎ 9490 4222

**Art Gallery 275:** Wed to Fri 10am – 5pm, Sat 10am – 4pm, Sun 11am – 4pm (Mon & Tue closed)

**Loft 275:** open during library hours



### Banyule Arts & Culture Program Information and call for applications

Are you an artist, maker, creative, musician, performer, dancer, writer who lives in Banyule? Do you want to know more about the Banyule Arts & Culture Program? Would you like to be part of it in 2025?

Come along to an information session to learn about what we do and how we can support you as a Banyule-based artist.

You must attend an information session if you want to apply to the program. If you've attended before, you don't need to attend again, but please email [arts@banyule.vic.gov.au](mailto:arts@banyule.vic.gov.au) for an application form.

Information sessions will be held during May, June and July and applications are open from May to July for programs to take place in 2025.

Get all the details and book an information session at [banyule.vic.gov.au/ArtsProgram](http://banyule.vic.gov.au/ArtsProgram)

*Image: Secret Stories in the Night Garden by Jutta Pryor. Banyule Art in Public Spaces program 2023*



### Conduit With Peta Clancy and Jo Scicluna

📅 **30 May – 21 July**  
**Opening & Smoking Ceremony:**  
**Thursday 30 May, 6.30pm – 8pm**

📍 **Art Gallery 275**

First Nations Bangerang artist Peta Clancy and first-generation migrant Jo Scicluna investigate complex histories of this land we live on and explore the significance of the Birrarung.

We invite conversations between the artists, the land, First Nations Elders and the wider community.

*Image: (left, detail of) The Birrarung/Kurrum Confluence (2022) photo by Zane Milke for Peta Clancy; (right, detail of) Where The River Takes Us (2024), by Jo Scicluna*



### Barrbunin Beek Aboriginal Gathering Place community art exhibition

📅 **22 June – 28 July**  
**Opening & smoking ceremony:**  
**Saturday 22 June, 3pm – 5pm**

📍 **Loft 275**

Barrbunin Beek means 'happy place' in the Woiwurrung language. It's a gathering place in Heidelberg West for Aboriginal and Torres Strait Islander people to connect with Elders and community, to practice and celebrate culture and build community wellbeing.

This exhibition by artists from the Barrbunin Beek community is a great opportunity to support local artists and purchase Aboriginal art.

*Image: Artworks at Barrbunin Beek*



### We are Celebrating our LGBTIQ+ community

📅 **17 May – 16 June**  
**Opening: Friday 17 May, 6.30pm – 8pm**

📍 **Loft 275**

Self-portraits of people in our community who identify as LGBTIQ+ showing how each person sees themselves. We are all someone's child, grandparent, aunt or uncle, parent, sibling, BFF. Let's celebrate who we are, in all our glorious differences and similarities. We simply ARE.

# Ward Rounds

Banyule is made up of nine wards. To find out which ward you belong to scan the code



**Cr Peter Castaldo**  
Griffin Ward

[peter.castaldo@banyule.vic.gov.au](mailto:peter.castaldo@banyule.vic.gov.au)  
0466 502 698

There is still time to have your say on two important strategies that will inform how our neighbourhoods develop. Drafts of Banyule's Housing Strategy and Neighbourhood Character Strategy are open for comment until Sunday 26 May. These strategies are of tremendous importance to residents in Griffin Ward, given the history of our area, the special housing and neighbourhood

character areas and the variety of planning zones in the ward. The new strategies must capture the essential things that define the past, present and future for Griffin Ward. Turn to **page 4** for details on how to get involved.

**The next Griffin Ward Coffee Catchup is on Tuesday 7 May at Aniseed Café in Eaglemont, pictured. I'll be there from 10am to 12pm. Come and say hello.**



**Cr Alison Champion**  
Sherbourne Ward

[alison.champion@banyule.vic.gov.au](mailto:alison.champion@banyule.vic.gov.au)  
0466 486 593

We're making progress on some important projects in Sherbourne Ward.

The new playground at Montmorency Park is bigger and better, with new equipment to cater for all ages and recreation preferences. Turn to **page 7** for details. The next playground upgrade in Sherbourne will be at Bolton Street Reserve in Eltham.

I know residents of Rangeview Road in Lower Plenty will be delighted with the completion of road works.

Council invested \$600,000 to rebuild the road between Old Eltham Road and Main Road. Works included upgraded drainage and road resurfacing and reconstruction of some residential driveways.



**Cr Fiona Mitsinikos**  
Hawdon Ward

[fiona.mitsinikos@banyule.vic.gov.au](mailto:fiona.mitsinikos@banyule.vic.gov.au)  
0434 891 077

It was wonderful to see so many scouts and their families at the opening of the new Viewbank Scout Hall.

The upgrade, financed and built by Council, means the scouts have a modern and accessible home, with new bathrooms, a storeroom, meeting rooms, an expansive outdoor deck and access ramps. Council provides a range of leisure

and recreation facilities for our diverse community and we are proud to support the Viewbank Scouts, a great community group that provides fun and educational activities for young people of all ages. Shout out to Viewbank Scouts Leader Glen Crawford, pictured, who had the vision and commitment to help make this project a reality.





# Ward Rounds



Cr Elizabeth Nealy  
Beale Ward

[elizabeth.nealy@banyule.vic.gov.au](mailto:elizabeth.nealy@banyule.vic.gov.au)  
0435 243 598

Did you know Banyule has four dog parks, one of which is at Malcolm Blair Reserve? The park off Weidlich Road in Greensborough is fully fenced so your pooch can enjoy some off-leash time. To help everyone enjoy the park, we ask you to respect a few basic courtesies such as keeping your pet under effective control, supervising children and, of course, carrying a litter device so that

you can pick up after your dog. There is plenty of room for several dogs to stretch their legs and play.

Dog parks are an important resource for dogs and their owners who live in urban settings such as Banyule.

Council is reviewing its Public Order for the control of dogs and cats in public places. Turn to **page 4** to find out how to get involved and have your say.



Cr Mark Di Pasquale  
Bakewell Ward

[mark.dipasquale@banyule.vic.gov.au](mailto:mark.dipasquale@banyule.vic.gov.au)  
0481 002 299

Watsonia shopping strip is open for business while the Town Square is being built. I encourage you to keep visiting all the traders you know and love.

I recently caught up with Jeremy at Watsonia Optical, a local business for 25 years!

There is parking opposite the RSL side of Morwell Avenue and in the top

section of the Morwell Avenue carpark (access these from High Street). There's also the temporary carpark next to the transmission tower at the top of Morwell Avenue (access from Morwell Avenue).

Watsonia RSL patrons can also use the daily RSL courtesy bus, which picks up from homes within a 10km radius of the RSL and delivers patrons to the front entrance of the venue.



Cr Alida McKern  
Chelsworth Ward

[alida.mckern@banyule.vic.gov.au](mailto:alida.mckern@banyule.vic.gov.au)  
0435 316 318

Working together as a community is a powerful way to bring about change. I recently met with Michele, Kathy and Jacq from the Parish Climate Action Group at the Mary Mother of the Church Parish community in Ivanhoe.

The group meets monthly and runs events to share information about climate-related initiatives in the wider church and community.

To find out how to get involved call the church office on **9926 2310**. All are welcome.

Council aims to be a carbon neutral organisation without relying on offsets by 2028 and to have a carbon neutral community by 2040. It's encouraging to see members of our community joining in a collective climate action effort.



**Banyule is made up of nine wards. To find out which ward you belong to scan the code**



**Cr Peter Dimarelos**  
**Olympia Ward**

**peter.dimarelos@banyule.vic.gov.au**  
**0434 891 065**

I'm pleased to see the work at Bellfield's Olympic Park progressing so well, with many of the new sports facilities already complete.

We've got some fantastic new community assets.

You'll notice a smoother traffic flow around the carpark area with the opening of the new slip lane from Southern Road.

This upgrade, part of the Olympic Park precinct transformation, means that people don't have to drive around in a loop to exit the carpark. Council expects traffic issues in the car park to reduce when Olympic Park is fully completed and operational.

Turn to **page 9** to find out more about what's happening in the precinct.



**Cr Rick Garotti**  
**Grimshaw Ward**

**rick.garotti@banyule.vic.gov.au**  
**0402 846 845**

It was an honour to attend the Queen's Guide Award ceremony for Caitlin, a member of the Greensborough Guide Unit in Bundoora.

It's the highest possible award for a Guiding youth member to achieve and this is the second one for a Greensborough Guide in 12 years. Caitlin has worked towards the award over the past four years, showing

resilience and commitment to complete the requirements during the pandemic and her final school year.

Caitlin's community service efforts continue, raising funds for the State School Relief Fund with other Guides. It's great to see that community spirit is alive and well amongst our younger generation.

Congratulations Caitlin!



**Cr Tom Melican**  
**Ibbott Ward**

**tom.melican@banyule.vic.gov.au**  
**0413 043 015**

Rosanna Tennis Club is thriving. It's a family-oriented club with plenty of day and night play for women, men, children and mixed teams. There's also private and group coaching and it's easy to hire a court through the club's online booking system.

The club facilities are top notch, after Council recently upgraded the courts and lighting, and the

members look after them so well.

New members are welcome; they're keen to hear from girls aged 8 - 16 who can play on Saturday mornings. The club is also looking to introduce Pickleball and more social play options. To find out more contact club president Ros Marshall on **0407 686 903** or check the club website at **play.tennis.com.au/RosannaTennisClub**







# Stand for Council in 2024

**Local government elections will be held throughout Victoria in October.**

Banyule is one of 79 local governments in Victoria. Local leadership is vital to support the wellbeing of local communities.

The Council elections in October are an opportunity for Victorians to elect the candidates who they think best represent, at the local level, their vision and interests for a better, stronger and more sustainable future.

## You could be a councillor

Committed, motivated and passionate people that reflect the diversity of our communities are encouraged to stand for council this year.

## Find out how

The Municipal Association of Victoria, Victoria's peak body for local government, is delivering information sessions for the community and prospective candidates. These sessions can be attended in-person or online. **You must register to attend.**

Participants will learn about:

- Local government and the role councils play for our local communities
- The role and responsibility of a councillor, mayor, deputy mayor and CEO
- The election process and candidate requirements
- What newly elected councillors can expect
- Councillor training and development

## Information sessions

**All sessions are in-person and online. You must register to attend.**

### Metropolitan sessions

📅 Thursday 9 May

📍 Metropolitan East hosted by Yarra Ranges Council

📅 Wednesday 29 May

📍 Metropolitan South hosted by Casey City Council

📅 Wednesday 5 June

📍 Metropolitan West hosted by Wyndham City Council

📅 Thursday 18 July

📍 Metropolitan North hosted by Hume City Council

**Banyule Council will have an information stall at this session and Banyule CEO Allison Beckwith will sit on the discussion panel.**

📅 Wednesday 31 July

📍 Metropolitan South East hosted by Port Phillip City Council

### Regional sessions

📅 11 dates from Tuesday 11 June to Wednesday 28 August

**Registration is mandatory for all sessions**

Find out more and register at [mav.asn.au/stand-for-council-2024](https://mav.asn.au/stand-for-council-2024)



# Banyule Futures

## Your Voice Our Future

We're planning for the future of Banyule.  
Your voice can shape it!



Join the conversations

Learn more on page 12 and 13, or  
visit [shaping.banyule.vic.gov.au](http://shaping.banyule.vic.gov.au)

## Contact us

### All enquiries

PO Box 94, Greensborough, VIC 3088  
Phone 9490 4222  
[enquiries@banyule.vic.gov.au](mailto:enquiries@banyule.vic.gov.au)  
[banyule.vic.gov.au](http://banyule.vic.gov.au)

### Council Service Centres

**Greensborough** 1 Flintoff St  
**Ivanhoe** 275 Upper Heidelberg Rd  
**Rosanna** 72 Turnham Ave (currently closed)  
COVID-19 restrictions may impact operations so please check our website for up-to-date information.  
Our customer service staff can also assist you over the phone.

### Hearing or speech impaired

Call us through the National Relay Service on 133 677 (TTY) or 1300 555 727 (ordinary handset) and contact 9490 4222.

## Interpreter service

إذا كنتم بحاجة إلى مترجم يرجى الاتصال  
بالخط القومي للترجمة الهاتفية على الرقم  
131 450 وطلب إيصالكم ببلدية بانول على  
الرقم 9490 4222.

如果你需要一名翻译, 请打电话到国家电话翻译服务处 (TIS National) 131 450, 再转接到 Banyule 市政府 9490 4222

若你需要口譯員, 請致電 131 450 聯絡 TIS National, 要求他們為你致電 9490 4222 接通 Banyule 市政廳。

Ako vam je potreban tumač, molimo vas, nazovite TIS National na broj 131 450 i zatražite da vas se spoji sa Vijećim općine Banyule na broj 9490 4222.

Se hai bisogno di un interprete chiama TIS National al numero 131 450 e chiedi di essere messo in comunicazione con il Comune di Bayule al numero 9490 4222.

Αν χρειάζεστε διερμηνέα τηλεφωνήστε στην Εθνική Υπηρεσία Διερμηνέων Μεταφραστών στον αριθμό 131 450 και ζητήστε να σας συνδέσουν με τη Δημαρχία Banyule στο 9490 4222.

Ако ви треба преведувач ве молиме јавете се на TIS NATIONAL на 131 450 и замовете да ве поврзат со Banyule Council на 9490 4222.

Haddii aad u baahan tahay mutarjum wac khadka qaranka oo ah TIS 131 450 weydiina in lagugu xiro Degmada Banyule tel: 9490 4222.

Nếu cần thông dịch, xin gọi cho TIS Toàn Quốc qua số 131 450 rồi nhờ họ gọi cho Hội Đồng Thành Phố Banyule theo số 9490 4222 giúp quý vị.