

# Banyule Banner

October 2023

---

3	North East Link news
5	Banyule Community Fund - give local
12	Community events and celebrations

---



  
**Banyule**  
City Council

# Mayor's Message

Mayor Cr Peter Castaldo



**It's hard to believe it's been nearly a year since I was elected Mayor of Banyule. It's been a fantastic and challenging year and has only deepened my pride in our community.**

I've met many of you at events, at workshops such as the Age-Friendly Banyule focus groups, or on school visits. It's been a privilege to launch exhibitions, festivals and pocket parks! I've seen firsthand the volunteers and engaged citizens who are committed to Banyule and its people.

A personal highlight has been working with Banyule Citizen of the Year Uncle Charles Pakana and witnessing his advocacy for our First Nations community and his belief in building a stronger future together.

I'm proud that we delivered another sustainable Budget that further reduces Banyule's debt. It means

we won't create a burden for future Councils; instead we're giving them a rock-solid foundation to grow from.

Thank you for your patience as some projects are taking longer than expected due to cost increases, materials delays and labour shortages. There is still much happening. The epic Olympic Park Masterplan nears completion, we're building Watsonia Town Square and many sports grounds and facilities are being upgraded. If you've been considering joining a local club, I encourage you to get in on the action.

If a quiet walk or cycle is your thing, we've got you covered with Banyule's amazing parks and bushland areas. Council is working to improve biodiversity and we're developing a new Urban Forest Strategy. We are taking serious and strategic action to address climate change and we're heading towards

zero emissions without offsets. After our first year of FOGO, which reduced landfill by 4500 tonnes, we're taking the next big steps in our Towards Zero Waste plan.

We are pushing forward with programs to make sure no-one in Banyule is left behind. Our Inclusive Employment Program and social enterprise partnerships continue to grow and we've developed new activities and services for older adults, the LGBTIQ+ community and people living with disabilities. I'm proud of the support we provide for carers in our community too.

We've also just launched the Banyule Community Fund, a great new way to donate to local non-profits and make a positive difference in your backyard.

I'm looking forward to seeing what's next for Banyule. Thank you everyone.

## Stay in touch with us online

 Email newsletters

[banyule.vic.gov.au/subscribe](http://banyule.vic.gov.au/subscribe)




@BanyuleCouncil

## Have your say on important projects and local initiatives

 [shaping.banyule.vic.gov.au](http://shaping.banyule.vic.gov.au)

## Council Meetings

 Upcoming dates:  
30 October  
13 November

 From 7pm

 Council Chambers @ Ivanhoe Library and Cultural Hub,  
275 Upper Heidelberg Road,  
Ivanhoe

For agendas, minutes, public question time and request to speak forms, visit [banyule.vic.gov.au/CouncilMeetings](http://banyule.vic.gov.au/CouncilMeetings)

Banyule City Council is proud to acknowledge the Wurundjeri Woi-wurrung people as Traditional Custodians of the land and we pay respect to all Aboriginal and Torres Strait Islander Elders, past, present and emerging, who have resided in the area and have been an integral part of the region's history.

Our community is made up of diverse cultures, beliefs, abilities, bodies, sexualities, ages and genders. Council is committed to access, equity, participation and rights for everyone; principles which empower, foster harmony and increase the wellbeing of an inclusive community.

# Designs revealed for North East Link

The North East Link Project (NELP) has released plans for the section of North East Link between Watsonia Rd and the M80 Ring Road.

New express lanes will connect the Ring Road to the North East Link tunnels, directing traffic under Grimshaw St, Elder St and Watsonia Rd. This will reduce traffic on local roads, with up to 19,000 cars and trucks a day taken off Greensborough Rd. The designs include:

- 10km of new and upgraded walking and cycling paths including underpasses at Yando St and Kempston St and bridges at Macorna St and Nell St
- A new M80 Ring Road interchange
- A new Grimshaw St interchange with bus priority lanes and walking and cycling underpasses
- Landscaped bridges at Elder St and Watsonia Rd
- Up to 10,000 trees planted
- 9km of new and upgraded noise walls

## View the plans and comment before Sunday 29 October

The Urban Design and Landscape Plan includes maps and drawings and an explanation of how it meets the requirements of the Environment Effects Statement.

The plans are on exhibition and submissions will be received until **5pm Sunday 29 October**. View the plans:

- Online at [engage.vic.gov.au/north-east-link](https://engage.vic.gov.au/north-east-link)
- North East Link Watsonia Community Hub, 17 Watsonia Rd
- Banyule Council offices, 1 Flintoff St, Greensborough

Have your say on the North East Link plans before October 29!

Visit [engage.vic.gov.au/north-east-link](https://engage.vic.gov.au/north-east-link)



Top: Macorna St bridge at M80 interchange.

Bottom: Yando St underpass.

Artist's impressions from NELP

## Tell North East Link what you think about the plans

Council has been advocating for the best outcome for the northern section of North East Link.

Some of the improvements we were asking for:

- To 'Lid the Link' between Watsonia Road and Elder Street
- Better connectivity between the east and west side of Watsonia
- Improved interchanges between the freeway and existing roads (Grimshaw and the M80)
- Shared user paths connecting to existing trails
- Increased plantings

While some of these improvements are included in the new designs, Council is disappointed that a number of major changes have been overlooked.

Council will make a detailed submission to NELP outlining opportunities to improve connectivity and visual appeal, particularly around Watsonia Station.

We encourage our community to view the plans and submit their comments at [engage.vic.gov.au/north-east-link](https://engage.vic.gov.au/north-east-link). Council will continue to provide updates on our advocacy via our Shaping Banyule page.

Scan the code or visit [shapingbanyule.vic.gov.au/northeastlink](https://shapingbanyule.vic.gov.au/northeastlink) and follow the page





# Shaping Banyule

## Get involved in local projects



## A more resilient Banyule

We've been working on an important new document: the Resilient and Safe Banyule Framework.

The Framework will be a roadmap for Council to help make our community stronger and safer. It will focus on things like keeping people healthy, bringing folks together and being ready for challenges as they arrive.

### Be a part of the project

You are invited to have your say on our approach. Head to [shaping.banyule.vic.gov.au/ResilientBanyule](https://shaping.banyule.vic.gov.au/ResilientBanyule) to complete the survey.

Share your thoughts on the framework and the five areas we're focusing on. Let us know your ideas for strengthening our health, wellbeing, social cohesion and preparedness.

Have your say until **Sunday 29 October**.

### Your Council Contact

**Danielle Clarke**  
Phone: 9490 4222  
Email: [danielle.clarke@banyule.vic.gov.au](mailto:danielle.clarke@banyule.vic.gov.au)



## Help shape our heritage

Are you interested in Banyule's heritage, or perhaps you have ideas on how to protect and celebrate it? Or maybe you own a heritage property? If so, we'd love to hear from you.

We've prepared a draft Heritage Strategy 2023-33 to guide Council's work in preserving and strengthening our heritage over the next decade.

The aim is simple: to ensure that our heritage continues to be a source of enjoyment, creativity and pride in our community.

Your feedback is important to help get this right.

Be part of this project by heading to [shaping.banyule.vic.gov.au/HeritageStrategy](https://shaping.banyule.vic.gov.au/HeritageStrategy) to complete the survey and share your thoughts on the Strategy's vision and key themes.

Consultation is open until **31 October**.

### Your Council Contact

**Nicola Rooks**  
Strategic Planner  
Phone: 9457 9835  
Email: [Nicola.rooks@banyule.vic.gov.au](mailto:Nicola.rooks@banyule.vic.gov.au)



## Have your say and shape your community

We're committed to working with our community to build and strengthen relationships that inform and help make decisions.

To have your say on local projects and activities, sign up to Shaping Banyule at [shaping.banyule.vic.gov.au](https://shaping.banyule.vic.gov.au) or scan the code.





# Give local with Banyule's new community fund

## BANYULE COMMUNITY FUND

**Council is proud to have launched a charitable fund, raising money specifically for people and non-profit organisations in Banyule who need more support.**

The fund lets businesses, organisations and individuals make taxable and non-taxable donations and has a strong focus on building the capacity of our community. Funds raised are granted back to local non-profit causes within Banyule.

Mayor Cr Peter Castaldo said it was great to see how organisations and the community were already getting behind the Banyule Community Fund.

“We thank those who donated and know their funds will go directly to help local non-profit causes in Banyule,” Mayor Castaldo said. “This new charity is all about making a positive difference to people in our area.”

The Banyule Community Fund also acts as a long-term investment for future generations. While many donations are granted out, some donations are saved to ensure the fund accumulates interest and grows over time for a lasting, sustainable fund.

Banyule Community Fund is a registered charity under the auspice of the Australian Communities Foundation. Tax-deductible and non-tax-deductible donations are accepted.

### How it works

**Directly benefit locals** – All funds are granted out to non-profit causes in Banyule.

**Donate your way** – Choose to fund one of the priority areas or donate to the overall fund.

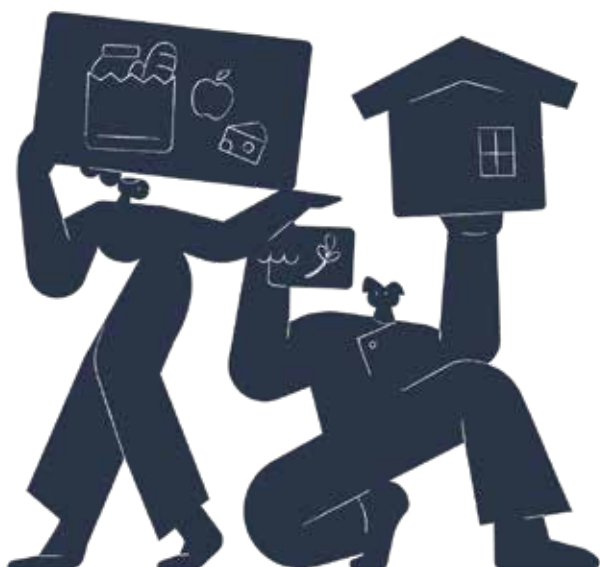
**Community-led charity** – Our fund assessment panel is made up of local people who know Banyule and its local needs.

**Build a better future** – The fund accumulates interest and grows over time.

### Donate your way

You can choose to donate to one of the priority areas that support the needs of our local community:

Community		Emergency relief	
Mental health		Climate change	
Food security		Arts and culture	
Homelessness		Disability	



### Donate local. Donate today.

Make a difference and donate to a new community-led non-profit fund that goes towards local needs in Banyule.

### Find out more

[banyule.vic.gov.au/BCF](https://banyule.vic.gov.au/BCF)

[banyulecommunityfund@banyule.vic.gov.au](mailto:banyulecommunityfund@banyule.vic.gov.au)

9490 4222





## LEDing the way on efficient street lights

**If you've noticed something a little different about your local street lights, you're on the money.**

We have just replaced 445 conventional street lights with energy-efficient LEDs in partnership with AusNet. In Banyule, there are more than 5000 street lights on the AusNet network. The business is funding councils to move to more efficient lighting.

This is the first phase of the project, with a focus on upgrading all mercury vapour and some high pressure sodium street lights.

There are many benefits to making the switch. The new street lights will increase lighting quality by providing greater uniformity of light, less depreciation of output over time and less glare. The change will also help Council save money by reducing electricity and maintenance costs. The street lights have a smaller carbon footprint.

For the expected 20-year life span of these new LEDs, we anticipate a cost saving of \$1,170,000 and 2,106 fewer tonnes of greenhouse gas emissions. The replacement works were completed in September.



## Environmental blitz to prevent stormwater pollution

**It's important to help prevent pollution at the source.**

That's why we recently joined a series of unannounced inspections at Bundoora Industrial Estate, along with representatives from Melbourne Water and 25 officers from the Environmental Protection Authority.

Stormwater from the estate on Grimshaw St drains to Salt and Darebin Creeks, so it's vital that businesses know their responsibilities under the Environmental Protection Act and are supported to do their bit to prevent stormwater pollution in local creeks and environments.

This helps to back up the work of the gross pollutant trap we recently installed at Greenwood Reserve above Gresswell Forest Nature Conservation Reserve.

We visited 31 premises and the EPA provided 73 pieces of compliance advice to the business operators. Five enforceable regulatory notices were issued.



Are you looking for accessible transport to get around Banyule?

# Try our new FREE community bus.

The new local bus has 29 new stops in Banyule to help our community get around. The bus travels through Ivanhoe, Bellfield, Heidelberg West, Heidelberg Heights, Macleod, Rosanna, Heidelberg, Eaglemont and Ivanhoe East.

To see the full bus route and timetable, call us on **9490 4222** or visit [banyule.vic.gov.au/CommunityBus](http://banyule.vic.gov.au/CommunityBus)

## Why were certain suburbs chosen?

The community bus is operating for a 12-month trial. In 2020, Council conducted a feasibility study for a free transport service in Banyule.

When working out where to run a trial, the study considered where use of the service might be greatest, based on factors including: the number of people aged over 70, people experiencing disadvantage, lack of access to existing transport and topography, particularly lack of walking paths.

Suburbs were selected for the trial where they had the highest proportion of one of these 'determinants' – or multiple factors combined. The bus route was also designed to link neighbouring suburbs together.

During the trial, Council will review the service to determine if it is feasible.

Scan the QR code to learn more.



Join a **FREE** celebration with the local community. Proudly featuring a culturally-diverse program with heaps to see and do for everyone!

Circus play | Live music | Art & craft workshops for all ages | Food trucks | First Nations performers | Come and try sports | Sensory-friendly space

For more information and to view the full program, scan the code or visit



[banyule.vic.gov.au/MalahangFestival](http://banyule.vic.gov.au/MalahangFestival)

**NOVEMBER 12 SUNDAY**  
10AM TO 4 PM

**MALAHANG RESERVE, HEIDELBERG WEST**

Supported by



This is a no smoking, no alcohol, dogs on lead event.





# Banyule community scores better sports facilities

## Millions of dollars' worth of upgrades are coming to some of Banyule's best-loved sporting facilities.

We can't wait to see local sports clubs and community members enjoying the changes. Here are four of the projects currently under way:

### Warringal Parklands Oval, Heidelberg

Council is undertaking a \$2.3 million complete reconstruction of the oval. This includes demolition of the old oval and installation of new drainage and irrigation along with new turf.

The oval is used by Heidelberg Football Netball Club, Heidelberg Junior Football Club and the Heidelberg Cricket Club, all clubs with a long history – the cricket club dates from 1857 and the football club, established in 1876, is one of Australia's oldest footy clubs.

### Ford Park Oval, Bellfield

The reconstruction of Ford Park's north oval (bordering Harrison St) will be a big improvement on the existing hard surface. The upgrade will also include new coaches' boxes, an electronic scoreboard, irrigation, drainage and new playing surface.

Council is overseeing the \$2 million works, funded by North East Link. After negotiating to start work earlier than planned, we expect the oval to be finished mid-2024.

The Ford Park ovals are well used, with regular clubs Ivanhoe Junior Football Club and Bellfield Cricket Club

being joined by Yarra Junior Football League since North East Link construction began at their previous base in Bulleen Park.

### Montmorency Bowls Club

The club rooms at Montmorency Bowls Club have been freshly renovated. The long-awaited improvements include a new kitchen, toilets and social spaces. Banyule Council has invested \$1.2 million in the Council-owned building, in addition to \$500,000 from the Victorian Government.

The bowls club's 200+ members will now enjoy facilities that are fit for their growing membership. Find out more about the club at [montmorency.bowls.com.au](http://montmorency.bowls.com.au)

### Ivanhoe Golf Club

Major accessibility and amenity upgrades at Ivanhoe Golf Club are due to be completed this year. The club house works – funded by a \$130,000 Victorian Government topped up by contributions from the club and Council – include a refurbished café and function room.

Accessibility improvements such as new automatic doors, wider doorways and an accessible bathroom will bring the building up to current standard. To make the building more sustainable, all appliances will be switched to electric.

Council is also resurfacing and redesigning the car park, which had deteriorated after heavy rains. The new design uses water-sensitive urban design principles and includes trees and landscaping.

Find out more at [ivanhoegolfcourse.com.au](http://ivanhoegolfcourse.com.au)





# Transparency and the planning process

## Banyule Council welcomes the release of the Independent Broad-based Anti-Corruption Commission (IBAC) Operation Sandon Special Report into corruption and conduct at a Melbourne council.

While the IBAC investigation and report relate specifically to practices at the City of Casey, the recommendations have broader application to all local governments in Victoria.

The Special Report lists 34 recommendations to promote transparency in development planning decisions and strengthen governance processes to reduce opportunities for corruption.

### How development planning decisions are made

Development planning decisions shape how our neighbourhoods and commercial areas look and operate. It is critical that the community has confidence that decisions are made transparently, in line with local policies that guide appropriate development, and are protected from corruption.

Planning applications are assessed by trained planning professionals who apply local planning policies and an understanding of community views to determine the suitability of proposed developments. Council delegates most planning decisions to planning officers. In a small number of applications, the councillors themselves may be required to decide on an application. Since 2018, 33 applications have been decided by Banyule Council. In cases where there is a high degree of community interest or sensitivity or where delegated officers determine that the application would benefit from broader community debate, an application can be “called in” for a decision of Council.

Whether a decision is made by a delegated officer or Council, the applicant and any objecting community member can appeal the decision at the Victorian Civil and Administrative Tribunal.

### Council's role in making decisions

One of the recommendations of Operation Sandon is to remove decision-making power from all councillors in Victoria. Banyule Council does not agree with this recommendation. At the 28 August Council meeting, Council resolved to advocate immediately on this issue, noting that ... “one of Councillors key roles is to be involved in the statutory planning processes, and that as representatives of the community this is an important role that needs to remain.”

While it will take time for the implications of Operation Sandon to become clear, it is Council's strong view that the current system should be retained. Allowing planning applications of high community interest to be considered in an open forum, where expert and community views can be heard, and where an appropriate decision can be made by locally elected officials is an effective and transparent model. Council has made its position known and has written to the Victorian Government advocating for council decision-making powers to remain. The Minister for Local Government and the Minister for Planning are yet to formally respond to the Operation Sandon recommendations.

Banyule Council has strong governance practices in place for managing development planning decisions and we will continue to look for opportunities to strengthen governance and transparency to maintain community trust and confidence in this important function of Council.

For more information visit [banyule.vic.gov.au/OperationSandon](http://banyule.vic.gov.au/OperationSandon)

## Watsonia Town Square

Work continues on Watsonia Town Square with the removal of the roundabout at Morwell Ave and High St and works beginning in Morwell Ave.

Construction is being completed in stages to minimise disruption. Major civil works are due for completion by July 2024. Council will then undertake less disruptive works such as landscaping, installing furniture and play equipment and building new accessible toilets.

While there will be changes to parking arrangements, parking will be available and pedestrian access to all shops and services will be maintained throughout the construction period. We encourage you to support Watsonia traders and continue to shop locally.

Get all the latest news any time at Shaping Banyule. Scan the code or go to [shaping.banyule.vic.gov.au/watsoniatownsquare](http://shaping.banyule.vic.gov.au/watsoniatownsquare)



# Banyule's social enterprises – business for good



**A social enterprise is a business with a social, cultural or environmental mission that creates benefit to the public. It earns most of its income from trade and reinvests the majority of its profits into delivering its social mission.**

There are more than 20 social enterprises based in Banyule. They work in hospitality, retail, cleaning, agriculture, employment services and finance and are creating jobs for local people who face barriers to work. They tackle unmet community needs and channel profits into positive social outcomes.

In the past year, Council has helped 24 organisations and entrepreneurs get started on their social enterprise journey. We've also partnered with For Change Co. and Now And Not Yet to establish social enterprise cafés in Bellfield and Rosanna.

In the coming year we have plans to help an even wider range of social enterprises set up shop in Banyule. Their

business interests include cleaning and maintenance, manufacturing and logistics and professional services. Find out more at [banyule.vic.gov.au/SocialEnterprise](https://banyule.vic.gov.au/SocialEnterprise)

## **In focus: For Change Café, Bellfield**

For Change Café Bellfield opened early this year to provide a paid hospitality training and employment program for young people at risk of, or experiencing, homelessness.

### **Over the next five years For Change Co. will deliver:**

- Six employment opportunities for local residents
- 81 paid training and employment opportunities for local young people at risk of homelessness or facing barriers to work
- 45 work experience placements for students from the nearby Waratah Special Development School.

Located at Bellfield Community Hub, For Change Café Bellfield is open for breakfast, lunch and snacks from Monday to Saturday.

## **Supporting good in your hood**

Social enterprises need your support to succeed. Whether you drop by a café for a coffee, source locally-grown produce from an urban farm or choose a gift from a socially responsible shop, it's easy to help create a better future for our local community.

## **Order your 2024 Community Calendar today**

Get to know Banyule's Significant Species month by month. To request a calendar, call us on **9490 4222**, scan the code or order online at [banyule.vic.gov.au/calendar](https://banyule.vic.gov.au/calendar) Calendars will be posted at the end of November.





# Upgrade in progress: Rangeview Road

Rangeview Road in Lower Plenty is having a major facelift as part of Banyule's Capital Works Program. Council is investing \$600,000 to improve the road infrastructure between Old Eltham Road and Main Road.

## As part of the works, we will:

- Regrade and asphalt the table drains on the west side of the road
- Reconstruct and extend the kerb and channel along the east side
- Upgrade drainage and reconstruct driveways where required
- Reconstruct the existing road pavement.

We expect works to be completed by the end of November (weather permitting).

During the construction period, the area will be local access only. We suggest planning for slightly longer travel times due to expected delays.



## See it. Report it.

**Seen something not quite right when you were out and about in Banyule? It could be graffiti, dumped rubbish, an abandoned car or a cracked footpath.**

To keep Banyule in top shape, we respond to all types of issues in the community. The sooner we hear about something, the sooner we can resolve it.

### Making it easier to report issues

We've added to the list of things you can report online and we've made it easier to snap a photo and report an issue directly from your phone.

Don't have a smartphone? You can always call us or visit our website.

### Reporting an issue is as easy as:

1. Visit [banyule.vic.gov.au/ReportIt](https://banyule.vic.gov.au/ReportIt) (scan the code below)
2. Type in the address where the issue is or drop a pin on the map
3. Select from the list to tell us what you are reporting
4. Take a photo of the issue
5. Give us a short description of what you are reporting

You can choose to leave your contact details – it means we'll be able to ask for more information and keep you updated with how we are responding.

**Did you know? Last year, we received close to 4000 reports for dumped rubbish, abandoned cars and graffiti alone!**



# Supporting Banyule

Council delivers more than 100 different community services.  
We're introducing you to the different ways we are supporting Banyule.

## We celebrate Banyule's diverse cultures and community with a packed calendar of free entertainment and activities throughout the year.

Council's festivals and events program brings our community together in fun and creative ways at venues throughout Banyule with five or more major events held each year, as well as more than 15 smaller events.

Our events range from art workshops, festivals, live music and exhibitions to traditional annual favourites like Carols by Candlelight.

We also support event organisers and local community groups with fundraising and awareness opportunities.

**Major events coming up include:**

### Malahang Community Festival

This free family-friendly festival is a celebration of community and cultural diversity. Enjoy live music, circus workshops, craft activities and sports. There'll be market stalls and food trucks.

 Malahang Reserve, Heidelberg

 Sunday, 12 November 2023, 10am to 4pm



### Carols by Candlelight

Carols by Candlelight is Banyule's annual community holiday celebration. There's something for everyone with pre-show entertainment, fabulous choirs and guest stars, food trucks and, of course, an appearance from Santa! The main show will be Auslan interpreted.

 Greensborough War Memorial Park,  
Henry St, Greensborough

 Saturday, 16 December 2023, 5pm to 9pm



### Eco Festival

A new addition to the major events calendar, EcoFest features pet-friendly and garden-themed workshops, live music and more for everyone to enjoy. Last year, we held a best pet competition to honour the non-human friends that had supported us through Covid lockdowns!

 Petrie Park, Montmorency

 Sunday, 10 March 2024, 10am to 4pm



### Lantern Festival

Three nights of magic held every two years at Malahang Reserve. The park becomes a colourful dreamland of large illuminated lanterns, roving performers and fire breathers.

The next Lantern Festival is in March in 2025.

Council also holds a range of smaller events, such as outdoor movies, in local parks. Our family-friendly program of free outdoor movies is popular during the warmer months – just bring your own blanket, deckchair and a picnic.

Another free program is Chillin' in Banyule, a live music program connecting local artists and Banyule venues. Returning in 2024.

To find out what's coming up next, scan the QR code or check out [banyule.vic.gov.au/Events-activities](https://banyule.vic.gov.au/Events-activities)







## Twilight Sounds

Banyule's biggest annual event! This fantastic free music concert is held on a summer evening. It's a great chance to see live music from well-known Australian musicians and local performers.

 Heidelberg Park Oval

 Saturday, 10 February 2024

## Everybody is welcome

Our events are CALD, LGBTIQ+ and all abilities friendly and are drug, alcohol and smoke-free. All our festivals are sensory-friendly and inclusive.

### Fun bringing the community together

Banyule Festivals Officer Clarissa Crupi loves her work.

"I provide opportunities to connect the community and for people to have fun. It's rewarding, creative and fulfilling."

"Our events program gives community groups a chance to showcase what they do, and is an easy way for community members to learn about and get involved with what's happening locally.

"Making these sorts of connections helps to strengthen our local community. That's one of the reasons we hold events in locations all over Banyule."

Clarissa's role involves creating and coordinating events, booking performers and activity providers, liaising with suppliers, contractors and community groups and managing budgets, logistics, marketing and risk management.

### Get involved

Not-for-profit organisations and commercial stallholders can apply to be involved with one of our major events.

Find out more at:  
[banyule.vic.gov.au/Majorevents](http://banyule.vic.gov.au/Majorevents)

# Community grants in action

## St Georges East Ivanhoe – powering our community

A Banyule Council environment grant has helped St Georges Anglican Church build an urban solar farm that is generating cleaner energy for the East Ivanhoe parish and the Banyule community.

The solar panels reduce atmospheric carbon dioxide (CO<sub>2</sub>) by 46 tonnes a year, equivalent to planting more than 8000 trees throughout the lifetime of the project, which is equal to about 1.37 million kilometres of vehicle emissions or 1000 long-haul flights.

The excess clean energy produced and not consumed on site is fed back into the electricity grid for use by the broader community.

Since the first solar panels were switched on in July 2020, Vicar Fr John Sanderson said the parish had saved \$6998 on power bills, while earning \$6934 from energy exported to the grid. The project also received funding from a Victorian Government energy efficiency program.

“Our urban solar farm is our most significant sustainability project here at St Georges East Ivanhoe,” he said.

“The 93 megawatt-hours we have delivered to the grid equates to 33 tons of CO<sub>2</sub> per year and is enough to use a microwave for 4,650,230 minutes or do 845,412 loads of washing. We hope one day to add a battery and a small windmill.”

Fr John said the project was a great example of how Council and the community could work together to reduce CO<sub>2</sub> emissions in Banyule.

Scan the code to view a short video of Fr John explaining the project.

To learn more about community grants, scan the code or head to [banyule.vic.gov.au/Grants](https://banyule.vic.gov.au/Grants)



## Reducing your risk of fire

Now's the time to get organised and protect yourself and your property from fire.

Council's Municipal Fire Prevention Officer conducts inspections each year to identify fire risks within the municipality. All property owners must reduce hazards around their property and maintain their properties throughout the Fire Danger Period.

Check your property regularly, keeping in mind changing weather conditions, and put in place a maintenance schedule through to April.

If you need help with clearance work, arrange a local contractor to carry out the required work to ensure compliance. For more fire prevention information: [cfa.vic.gov.au](https://cfa.vic.gov.au) or [frv.vic.gov.au](https://frv.vic.gov.au)

Please note, no burning off is allowed in Banyule without a permit.

### Fire prevention checklist

**Fuel reduction is one of the most important precautions that you can undertake. Make sure you:**

- Slash or mow grass around the home and outbuildings
- Remove tree limbs, branches, leaf litter and twigs from around your home
- Maintain a 20m fuel reduction zone around your home (greater if on a slope)
- Clear around trees and remove dead branches, prune lower limbs and cut back branches overhanging any roof
- Keep gutters and roofs clear of leaf litter, twigs and debris.

It's also a good idea to stack firewood away from the house and, as always, check your smoke alarms regularly.

Seasonal conditions may result in regrowth of vegetation after the initial slashing or mowing. These requirements must be maintained throughout the Fire Danger Period.







# Works complete at Barrbunin Beek

## Banyule Council has completed a beautiful refurbishment to Barrbunin Beek Aboriginal Gathering Place in Olympic Park, West Heidelberg.

Barrbunin Beek, meaning 'happy place' in the Woiwurrung language, is a place for Aboriginal and Torres Strait Islander people to come together.

The work included adding new windows, an office, a meeting room, an external pergola and landscaping.

Barrbunin Beek has a Committee of Management of First Nations People and works closely with community and health services, Council and the Aboriginal and Torres Strait Islander community in delivering programs and activities.

To find out more about programs or upcoming activities join the Barrbunin Beek Facebook page: [facebook.com/BarrbuninBeekGP](https://facebook.com/BarrbuninBeekGP)



## Steps to Treaty in Victoria

In June this year, 22 members were elected to the First Peoples' Assembly of Victoria. The Assembly is the independent and democratically elected body to represent Traditional Owners of Country and Aboriginal and Torres Strait Islander peoples in Victoria.

The body is responsible for negotiating a statewide treaty with the Victorian Government. Assembly members represent communities across 5 regions that cover Victoria: Metropolitan, South East, South West, North East and North West.

### Meet the Metro Melbourne representatives:

- Alister Thorpe
- Aunty Esme Bamblett
- Barry Firebrace-Briggs
- Gary Murray
- Indi Clarke
- Nerita Waight
- Tracey Evans
- Ngarra Murray
- Troy Austin
- Uncle Andrew
- Gardiner Zoe Upton
- Uncle Shane Charles

To learn more about the Assembly, head to [firstpeoplesvic.org/treaty](https://firstpeoplesvic.org/treaty)

Treaty is one of three critical reforms called for as part of the Uluru Statement from the Heart. Victorian Treaty efforts are separate from the Voice to Parliament Referendum being held nationally on 14 October 2023.



# Food for all

**More community gardens, corner store green grocers and turning vacant blocks into small farms. These were just some of the bright ideas put forward by pupils at Ivanhoe Grammar School to improve food security in Banyule.**

Year three pupils were discussing Banyule's Urban Food Strategy with Deputy Mayor Cr Alida McKern, who also answered questions about local government and her job as a councillor.

Pupils talked of growing vegetables at home, gardening with grandparents and their favourite healthy foods before enjoying a piece of seasonal fruit from Cr McKern's basket.

The Urban Food Strategy has been adopted by Council following community consultation that found 28% of respondents have no time to shop and cook, 25% find healthy foods too expensive and 14% do not have local access to healthy food options.

The strategy investigates all aspects of our food system, from farm to fork, at a time when productive farmland around Melbourne is forecast to reduce by 50% over the next 25 years. It looks at equitable access, sustainable food networks and environmentally friendly production and distribution of food.

There is an action plan to improve access to fresh, affordable and healthy foods for all Banyule residents. Priorities include food security, food sustainability, local access to healthy food, programs in schools, urban farming and understanding how climate change impacts the food system. Stay tuned for community cooking workshops and gardening with older adults

Read the strategy at [shaping.banyule.vic.gov.au/UrbanFood](http://shaping.banyule.vic.gov.au/UrbanFood)



## International Day of People with Disability


**International Day of People with Disability has been celebrated internationally on 3 December for more than 30 years.**


To mark the theme of creating accessibility and equity through innovation, Council is improving our website to make sure people with disability can find local support and get involved in the community.

This ongoing project has been guided by feedback from Banyule's Disability Panel of Experts and community members. We are grateful to all involved for their insightful contributions.

For information, visit [banyule.vic.gov.au/peoplewithdisability](http://banyule.vic.gov.au/peoplewithdisability)

## Join us for International Day of People with SUPER Abilities

 Sunday 3 December, 3.00pm – 4.30pm

 Yarra-me Djila Theatrette, Ivanhoe Library & Cultural Hub

Celebrate International Day of People with Disability with a screening of video works and musical performances by artists with SUPER abilities! Curated and produced by Jodie Ohmzutt with contributions from the IncArt Crew and Music Vibes from Jets Studios. Enjoy an afternoon of family-friendly fun!







## Making Banyule age-friendly

**Council is committed to making Banyule age-friendly which will enable positive health and quality of life outcomes for older adults.**

In Banyule, a quarter of our community is 60 years and older. This is higher than Greater Melbourne.

Right now, Council is developing Banyule's Older Adults Framework 2030, which will outline our Vision and Goals for making Banyule a great place for older adults to work, live, play and be valued.

Council has established an Older Adults Codesign Working Group to advise and support Council on the development of the Framework and ensure it reflects what matters to older people in our community.

We've held an extensive consultation process including an online survey in Shaping Banyule, with hard copy versions available in a range of community locations. We also met with 10 local community groups and in August, held a community focus group with over 50 residents braving the cold and wet weather to provide valuable feedback.

The draft Framework will be out for public feedback later in the year. For updates, follow this page: [shaping.banyule.vic.gov.au/OlderAdults](https://shaping.banyule.vic.gov.au/OlderAdults)

### Join our age-friendly programs

Council has a range of age-friendly programs and initiatives, and we are always looking for more people to participate!

Here are just a few ways to take part:

- Nominate to be on our Age Friendly Committee
- Join our Age Friendly Champions – volunteer-based program
- Participate in our Older Adults Community Connections Program
- Sign up to receive our Age in Focus Newsletter
- Participate in our Ivanhoe Senior Exercise Park activities
- Use our community bus
- Join our Carers Support Program

For more information or to register your interest, contact Jenna Gandolfo, phone **9457 9803** or email [agefriendly@banyule.vic.gov.au](mailto:agefriendly@banyule.vic.gov.au)

There's also lots of information at [banyule.vic.gov.au/OlderPeople](https://banyule.vic.gov.au/OlderPeople)

## Carers, get your free wellbeing pass!

**Are you an unpaid carer living in Banyule who needs a break or wants some exercise?**

Carer Wellbeing Passes are now available for free visits to WaterMarc or Ivanhoe Aquatic Centre. Join a class or have a relaxing swim/spa/sauna at a time that suits you. Aquatic passes can be used by you and the person you care for, if you're visiting at the same time.

To apply and see what else the Banyule Carer Support Program offers, head to [banyule.vic.gov.au/CarerSupport](https://banyule.vic.gov.au/CarerSupport)





## ‘Visually stunning’ work wins Work on Paper award

Banyule’s prestigious \$10,000 national acquisitive art prize was awarded to (L-R) Aunty Rochelle Patten and Katie Howard for their collaborative artwork Bayadherra, which the judges described as “visually stunning”.

A bumper crowd of artists, their friends and Banyule’s arts community came together to celebrate the opening of 2023 Banyule Award for Works on Paper Finalists’ Exhibition, showing 25 artworks responding to the theme Nhalinggu Bagung, which means ‘come gather’ in Woi Wurrung language.

The prize was judged by Kimberley Moulton, Senior Curator of South-Eastern Aboriginal Collections at Museums Victoria, and artist and curator Phuong Ngo, a previous winner of the prize.

Moulton said the winning work showed the two artists “coming together seamlessly and in dialogue with each other.”

“This work meets the criteria set for the Award in relation to coming together both in the literal sense of the collaborative work, but also speaks to a broader conversation around solidarity and the very pertinent issue of protecting the country and threatened species.

“Aunty Rochelle Patten is also a Senior Elder and knowledge holder and her cultural artistic practice is significant to the state of Victoria and in highlighting Country and animals.”

The \$1000 Commendation Prize was awarded to Torres Strait Islander artist Brian Robinson for his artwork, Legacy: One Umbrella, Eight hundred and eighty thousand voices, sixty thousand years of occupancy.

The exhibition explores the theme of reconciliation and includes work by artist from all around Australia. It runs until 26 November at Ivanhoe Library and Cultural Hub.

## Save the date: Carols by Candlelight 2023

**Dust off your carolling skills and get ready to jingle those bells. Carols by Candlelight is almost here!**

**📅 Saturday 16 December, 5pm - 9pm**

**📍 Greensborough War Memorial Park, Henry Street**

Santa will arrive much earlier this year, the result of listening to feedback from our community, who told us this would be better for families and children!

So, grab your picnic rug and join us for a joyful celebration of the holiday season.



Festivities begin at 5pm with entertainment, face painting and family photos with Santa.

The main concert is 7pm - 9pm with a stellar line-up including the Diamond Valley Brass Band, Australian Children’s Choir and guest stars Denis Walter, Carla Troiano and Ricky Muscat. Santa will make an appearance around 7.30pm.

Follow Banyule’s Facebook page for updates:  
**facebook.com/banyulecouncil**

To view the full program, scan the code or go to **banyule.vic.gov.au/Carols**







## National Recycling Week: Composting workshop

Are you looking at ways to manage your food and garden waste at home? Want to make your home garden flourish?

This year's National Recycling Week theme is 'What goes around comes around'. To celebrate, we're hosting a jam-packed session at Bellfield community gardens.

Learn about all the tips and tricks to make great compost. Find out more about different containers, worm farming and bokashi buckets. You will be surprised how much you can reduce your waste by diverting your kitchen scraps from landfill.

Then take a tour of the gardens to see firsthand how your garden can benefit from compost. Spaces are limited to please register to secure a spot!

### Composting workshop

📅 Saturday 18 November, 10.30am – 12.30pm

📍 Bellfield Community Garden,  
15 Daphne Crescent, Bellfield

Register via [banyule.vic.gov.au/WhatsOn](https://banyule.vic.gov.au/WhatsOn)

## Join us for a tour of Banyule's five community gardens!

Are you interested in exploring what Banyule's community gardens have to offer? Perhaps you would like to learn some new skills to apply in your own garden?

Take an electric bus with us around Banyule to discover our local patches.

The event will include a tour of each garden with a couple of gardening activities at Sustainable Macleod and St Johns Riverside Community Garden then a yummy lunch at Bellfield Community Garden.

📅 Saturday 28 October, 10.00am – 2.30pm

📍 Bellfield Community Garden, 15  
Daphne Crescent, Bellfield

More info at [banyule.vic.gov.au/GardenTour](https://banyule.vic.gov.au/GardenTour)



## Students planting the future

Bundoora Secondary College students and staff are committed to sustainable practices, with an emphasis on supporting Banyule's amazing wildlife.

Their latest project, "Giving to Gresswell", which received a Council grant, aims to revegetate a wildlife corridor link between the school campus and Gresswell Forest.

The key focus for this wildlife corridor is the use of indigenous, dense prickly shrubs to support small insectivorous and nectar-feeding birds.

This isn't the first fantastic initiative from the school – recently, they also secured an environment grant from Council to build a native fish hatchery. These initiatives play an important role in broader protection and enhancement of biodiversity in Banyule.



## YouthFest lights up Macleod Park

Hosted by Banyule Youth Services, the annual YouthFest is a free public festival for young people aged 12-24.

Throughout the day, 5000 young people joined in a wide variety of activities including face painting, hair braiding, clothes grabs, rides, live music and sports. They were able to try new food, drinks and activities from different cultures and find out about services and support they can access in the community.

YouthFest is a way for young people to show their talents through live performance, market stalls and volunteering. These opportunities promote positive youth culture while building fun, safe and supportive connections between young people, their peers and local services.

The festival offers a safe space for all young people, including those who are culturally and linguistically diverse, First Nations, part of the LGBTIQ+ community, living with a disability or neurodiversity.

### Banyule Youth Services

YouthFest might be over for another year, but there's still plenty on! The Youth Services team runs regular weekly programs, school workshops, targeted events and 1:1 support.

Find out more - scan the code or go to [banyuleyouth.com](http://banyuleyouth.com)



## Visit the Cat Protection Society

Do you know a community group or school that would like a unique opportunity to learn about responsible cat ownership and cat welfare? The Cat Protection Society of Victoria (CPSV) runs school and community sessions at its adoption shelter in Greensborough.

The session on responsible cat ownership is designed for primary school pupils and is available as a school-excursion to CPSV or with a member from the CPSV team visiting the school.

CPSV also welcomes community group bookings on weekdays. Groups of up to 10 people can tour the adoption shelter, see the work the society does and meet some of the friendly cats and kittens in residence. You can add morning or afternoon tea in the CPSV café. All proceeds go towards helping the cats at the shelter.

Find out more and book at [catprotection.com.au](http://catprotection.com.au)



*Banyule Social Support group has visited CPSV on a number of occasions. They always enjoy meeting the cats and having a cuppa.*



# Walk with us in the march to end gender-based violence

16 Days of Activism against Gender-Based Violence is a worldwide campaign dedicated to ending gendered violence.

This year's campaign runs from 25 November (International Day for the Elimination of Violence against Women) to 10 December (International Human Rights Day).

Throughout this time, Council and local organisations will share information and opportunities to challenge the gendered stereotypes that impact our community.

To mark the start of the 16 Days and take a stand against family and domestic violence, Council will participate again in the Walk against Family Violence on Friday 24 November. We invite community members to join us.

For more information visit [banyule.vic.gov.au/16days](http://banyule.vic.gov.au/16days)



**BANYULE CHILDREN'S GIFT APPEAL**

**For more than two decades, the community has donated gifts and money to children and families experiencing hardship at Christmas.**

Last Christmas, 430 local children received gifts, thanks to your donations.

During November and December we will collect new gifts, toys and monetary donations.

Find out how to contribute at [banyule.vic.gov.au/GiftAppeal](http://banyule.vic.gov.au/GiftAppeal)

## Banyule kindergarten registrations are open

Kindergarten, also known as preschool, is a play-based program for children aged three and four. It is delivered by qualified Early Childhood Teachers.

Attending kindergarten has many advantages for children. It helps children develop social and language skills, improves confidence and independence, enhances physical and creative skill and supports their desire to learn and discover.

Council manages registrations for 26 kindergartens in Banyule. Registrations for 2024 and the remainder of 2023 are now open.

To learn more and to register your child in a Banyule kindergarten, scan the QR code or go to [banyule.vic.gov.au/kindergartens](http://banyule.vic.gov.au/kindergartens)



# Ivanhoe Library & Cultural Hub

## Events & activities



### The 2023 Banyule Award for Works on Paper

#### Finalists' Exhibition: Nhalinggu Bagung

📅 On until 26 November

📍 Art Gallery 275

The Banyule Award for Works on Paper is awarded biennially to an outstanding contemporary work on paper. This is a prestigious national art prize, with the winning artwork entered into the Banyule Art Collection.

The theme for the 2023 Banyule Award for Works on Paper is Nhalinggu Bagung, which means 'come gather' in the Woi Wurrung language.

We invited entries from Australian artists to explore the concept of Reconciliation and show us what it looks like from their perspective.

Read all about the winning artists and artwork on page 18.

[banyule.vic.gov.au/worksonpaper](http://banyule.vic.gov.au/worksonpaper)

*Image: Nhalinggu Bagung logo artwork created by Jodie Brennan, Mazart Design Studio*



### Blue

#### By The Colour Collective

📅 12 October – 5 November 2023

📍 Loft 275

Colour is central to the way humans perceive and describe the world. It resonates with all our senses and evokes a powerful visceral response.

Artists have been playing with colour for hundreds of years and every artist creatively translates and communicates the language of colour through a myriad of different perspectives and mediums.

This collection of works showcases, explores and celebrates a single colour, BLUE, and is the inaugural exhibition of local artist group, The Colour Collective.

#### The Colour Collective are:

Anastasia Albino  
Ebony Balaz  
Moira Burke  
Kylie Crombie  
Sandra Di Monte  
Vladimir Esipov  
Margaret Flower  
Sascha McIntosh  
Julie Palmer

*Image: Detail of artworks by Sascha McIntosh, Kylie Crombie and Julie Palmer (2023)*



📍 275 Upper Heidelberg Rd, Ivanhoe

All events at Ivanhoe Library & Cultural Hub are free, but please check the website for updates prior to visiting or contact us if you have any questions.

🌐 [banyule.vic.gov.au/ILCH](http://banyule.vic.gov.au/ILCH)

✉ [arts@banyule.vic.gov.au](mailto:arts@banyule.vic.gov.au)

☎ 9490 4222



## Nicole and Lauren Bester Kathy Chouliaras Lewis

📅 13 – 26 November

📍 Loft 275

Come and enjoy artworks by local artists in this shared exhibition.

Sisters Nicole and Lauren are young, emerging artists, inspired by the natural environment and their grandparents who were both artists. Many of their artworks feature scenery and nature including landscapes, butterflies and flowers. They stand out with the bright and colourful palette bringing joy and happiness to all who view them.

Kathy Chouliaras Lewis is an artist of many talents, working in a variety of mediums, styles and subject matter. From landscapes and seascapes in oil, acrylic, pastel and pencil to 'no brush' techniques, including scratchboard, pull-string painting, pouring, multimedia and abstract art. She loves colour and enjoys exploring the world around her through her art.

*Image: L - R: Twilight Magic by Nicole & Lauren Bester, Multimedia Abstract by Kathy Chouliaras Lewis*



## Friday Night Live @ ILCH

📅 Friday 1 December, 4pm – 8pm

Come to Ivanhoe Library & Cultural Hub to celebrate the return of summer – warm nights, outdoor events.

Friday Night Live @ ILCH will include a vibrant market with local artists and makers, as well as fun activities for the family.

There will be fantastic live music, featuring Georgia Fields. The magnetic singer-songwriter combines live vocal looping with the dynamic energy of her band of multi-instrumentalists, conjuring a vivid and mesmerising art-pop soundscape.

"Georgia Fields dreams in fantastic Technicolor"  
– The Age

This community event is FREE, all are welcome, no bookings required. What better way to kick off a summer of fun and festivities!

[banyule.vic.gov.au/FridayNightLive](http://banyule.vic.gov.au/FridayNightLive)

*Image: Georgia Fields*

# Ward Rounds



**Cr Peter Castaldo**  
Griffin Ward

[peter.castaldo@banyule.vic.gov.au](mailto:peter.castaldo@banyule.vic.gov.au)  
0466 502 698



The Eaglemont Village Traders Association's markets are always a great day out – in fact, their Heritage Day market was recognised as one of the best main street events in this year's Mainstreet Australia Awards! The markets are held in the village on the last Sunday of the month from 10am to 2pm, with different themes to reflect changing seasons

or celebrate special occasions. I'm looking forward to the next market day on 29 October with the theme of World Food Festival – something to get your teeth into! There will be fabulous food, a makers market and live music. There will be two more markets in the lead-up to Christmas: 26 November and 10 December. For more information, visit [evmarketplacesundays.com](http://evmarketplacesundays.com)



**Cr Alison Champion**  
Sherbourne Ward

[alison.champion@banyule.vic.gov.au](mailto:alison.champion@banyule.vic.gov.au)  
0466 486 593



It was wonderful to officially open the new Were Street Reserve on 15 September. Supported by Victorian Government funding, we have transformed this small park. There are new accessible toilets and accessible paths, plus a covered performance stage with a colourful mural. Among the native plants and

landscaping, there's a new nature play area for young kids, recycled seating and a drink fountain. We've had many compliments from the community and St Francis Xavier Primary School students who joined us at the opening. Next time you're at Were Street shops I encourage you to take a look at this great little reserve.



**Cr Fiona Mitsinikos**  
Hawdon Ward

[fiona.mitsinikos@banyule.vic.gov.au](mailto:fiona.mitsinikos@banyule.vic.gov.au)  
0434 891 077



Banyule's Gardens for Wildlife program has been running for two years, providing residents with free advice on how to provide habitat in their backyards to support local wildlife. The program has more than 160 properties signed up for assessment by our trained volunteer Garden Guides, who have evaluated half of the registered properties to date.

It's a great way to connect with like-minded people, either through being a guide or by meeting one of our amazing volunteers when they assess your garden. By improving habitat around your home you'll also meet more of our amazing wildlife! If you would like to know how to become a guide or register your garden, visit [banyule.vic.gov.au/G4W](http://banyule.vic.gov.au/G4W)



**Banyule is made up of nine wards. To find out which ward you belong to scan the code**



**Cr Elizabeth Nealy**  
Beale Ward

[elizabeth.nealy@banyule.vic.gov.au](mailto:elizabeth.nealy@banyule.vic.gov.au)  
0435 243 598

Greenhills Neighbourhood House in Greensborough is a welcoming place for the whole community. They run lots of great free and low-cost programs, including tai chi, yoga, dance and cooking classes. They also have occasional childcare and free community lunches. Wondering how to join in? The Tuesday morning crafty chat is a good way to gently introduce yourself. It's mixed-age

and free – work on your project while having a cuppa and a chat. Or head to their free Multicultural Dinner on 24 November. Dumplings provided! Their food relief pantry is open every Thursday and Friday morning. No bookings required, just drop in if you need a hand. Donations always appreciated. For more information, visit [ghnh.org.au](http://ghnh.org.au) or call **9435 9287**.



**Cr Mark Di Pasquale**  
Bakewell Ward

[mark.dipasquale@banyule.vic.gov.au](mailto:mark.dipasquale@banyule.vic.gov.au)  
0481 002 299

I was pleased to present the Banyule City Council Spirit Award to Cooper Harrington at the recent Yarra Plenty Waves swim club awards night. Council is proud to sponsor the award, which embodies our commitment to an inclusive community. The award recognises Cooper as an athlete who has shown great spirit and enthusiasm this season. He's been a

great ambassador for the club and for the Multi-Class group, a competition for athletes with disability. Yarra Plenty Waves is the largest swimming club in northern Melbourne. You'll see their squad training at Watsonia pool (old Watsonia Secondary School site) and at WaterMarc in Greensborough. Find out about the club at [yarraplentywaves.com.au](http://yarraplentywaves.com.au)



**Cr Alida McKern**  
Chelsworth Ward

[alida.mckern@banyule.vic.gov.au](mailto:alida.mckern@banyule.vic.gov.au)  
0435 316 318

I'm delighted that Council has adopted the Urban Food Strategy that we've been working on with the community. It looks at our food system, from farm to fork, with the aim of making healthy food more available and affordable for all Banyule residents. It's an issue of interest to the whole community, including pupils at Ivanhoe Grammar School, who

had lots of great ideas when I visited the school. Turn to page 16 for more information. The final Chelsworth community meeting for 2023 is on Thursday 2 November from 6.15pm – 8.15pm at Ivanhoe Library and Cultural Hub. All welcome. Send your questions to me by 31 October, email [alida.mckern@banyule.vic.gov.au](mailto:alida.mckern@banyule.vic.gov.au)



# Ward Rounds



Cr Peter Dimarelos  
Olympia Ward

[peter.dimarelos@banyule.vic.gov.au](mailto:peter.dimarelos@banyule.vic.gov.au)  
0434 891 065

It's a tough time for many. If you're looking for ways to help people in your neighbourhood, consider supporting the Banyule Support and Information Centre (BANSIC). This not-for-profit, run out of Shop 48 in The Mall, delivers year-round food and emergency relief assistance.

Through their Food Hub, they provide staples, fresh fruit and vegetables, pet food and frozen meals to those in our

community who are really struggling. You can volunteer at BANSIC, organise a food drive for essential pantry items or hold a fundraiser at your school or club. Every \$10 donated provides \$95 worth of food for vulnerable families.

For more information, reach out to BANSIC coordinator Kate Farrelly on **9459 5959** or email [kate.farrelly@bansic.org.au](mailto:kate.farrelly@bansic.org.au) Thank you!



Cr Rick Garotti  
Grimshaw Ward

[rick.garotti@banyule.vic.gov.au](mailto:rick.garotti@banyule.vic.gov.au)  
0402 846 845

One of the key ways Council can support our community is by advocating for great opportunities. That's why we're supporting the exciting proposal from Bowls Victoria to locate a new State Bowls Centre at Bundoora Bowling Club.

The project would be a partnership between Bowls Victoria and the Victorian Government.

Bowls is a major participation sport in

Victoria, but it has no dedicated home base.

Bundoora Bowling Club is a strong, healthy club. It supports the proposal, which would significantly expand the clubrooms and would include a bowling centre of excellence.

The aim is for building to begin in 2025. Find out more about your local club, including hall hire, at [bundoorabowlingclub.com.au](http://bundoorabowlingclub.com.au)



Cr Tom Melican  
Ibbott Ward

[tom.melican@banyule.vic.gov.au](mailto:tom.melican@banyule.vic.gov.au)  
0413 043 015

Choosing active transport such as walking or cycling is good for your health and the environment. It's also a great way to explore your neighbourhood and enjoy the outdoors.

Council is working hard to ensure the North East Link project includes funding to make active transport a safe and viable option and to encourage walking and cycling for people of all ages.

Council is also seeking funding for more cycling connections in Ibbott, including:

- Within the Hurstbridge rail corridor between Rosanna and Macleod stations
- A new east-west link from La Trobe University to the Plenty River Trail via Macleod Station.

Find out more at [banyule.vic.gov.au/advocacy](http://banyule.vic.gov.au/advocacy)







*The endangered Dianella amoena (Matted Flax-lily)*

# Bushland diaries

## Protecting endangered species

Banyule is home to a number of endangered plant species such as the Matted Flax-lily (*Dianella amoena*). This species' decline has been largely caused by habitat loss due to agricultural and urban expansion.

The Plenty River rangers have worked hard over the last five years to protect and enhance a known population of this rare species within Greensborough Escarpment.

The population was first found in the reserve in 2018 and is now closely monitored.

Since the discovery, the Plenty River rangers have been taking action to bolster the population. They have collected seed and successfully propagated seedlings which have been planted back into the reserve. They have also planted a diverse selection of locally indigenous wildflower species which share a common pollinator: the Blue-banded Bee.

The Matted Flax-lily can be seen flowering from November to January.

### Upcoming events:

#### Handweeding exotic grassy and other weeds


Join our rangers and the Friends of Montmorency Bushlands to help protect biodiversity.

 **10am-12pm, Saturday 11 November**

 **Belmont Reserve, Montmorency**

For further information, contact Senior Ranger Tom Crawshaw: [tom.crawshaw@banyule.vic.gov.au](mailto:tom.crawshaw@banyule.vic.gov.au)

Find out more about what we're doing for biodiversity by scanning the QR code or heading to [banyule.vic.gov.au/biodiversity](http://banyule.vic.gov.au/biodiversity)



*Plenty River Senior Ranger Eliza tending to Matted Flax-lily seedlings*

# Buath Gurru – grass flowering season (November)

## The Wurundjeri seasonal calendar is made up of seven seasons.

In Buath Gurru, the weather is warm, and it is often raining. Kangaroo Grass is flowering.

Local Buliyong (microbats) are catching insects in flight. You may see them just after dusk. 'Balayang', the indigenous creation being brother to Bunjil the wedgetail, is also referred to as the bat, and features in First Nations people's stories at this time of year.

Male Common Brown butterflies are flying up in the tree canopies and right down amongst the Kangaroo Grass right now. In our area of Victoria, they are likely the most common native butterfly you'll see in the garden this month.

Coranderrk (Victorian Christmas Bush) is coming into flower.

Cherry ballarts are fruiting, with their fascinating structure of a dark seed perched on the end of the fruit flesh rather than inside it. They fruit in multicolours – orange, pink, red and purple, on the one bush.

Kookaburras call at dawn and dusk, marking out their family plot proudly, with breeding now in full swing. In favourable conditions, they can live for more than 20 years and have the same partner for life.

### Buath Gurru in our garden

- Flowering grasses means pollen abundance – if you get hay fever, it will really kick in this month.
- Turbulent weather can be a pain with young seedlings around, especially if they have been transplanted recently; keep an eye on weather reports. Securing garden items at night is a good idea too.

- Hot days happen in this season, but many plants are not yet strong enough to withstand it.
- Early tomato flowers can be pollinated effectively by seasonal winds this month, getting a jump on early nightshade treats.
- The changing climate is intensifying storm activity, with wind speeds up a gear. If you have tall trees with canopies way up higher than the surrounding rooftops, they may take an increasing beating.



Artwork by Aunty Judy Nicholson, part of her series depicting the Wurundjeri Seasons.

## Contact us

### All enquiries

PO Box 94, Greensborough, VIC 3088  
Phone 9490 4222  
enquiries@banyule.vic.gov.au  
banyule.vic.gov.au

### Council Service Centres

Greensborough 1 Flintoff St  
Ivanhoe 275 Upper Heidelberg Rd  
Rosanna 72 Turnham Ave (currently closed)  
COVID-19 restrictions may impact operations so please check our website for up-to-date information.  
Our customer service staff can also assist you over the phone.

### Hearing or speech impaired

Call us through the National Relay Service on 133 677 (TTY) or 1300 555 727 (ordinary handset) and contact 9490 4222.

## Interpreter service

إذا كنتم بحاجة إلى مترجم يرجى الاتصال بالخط القومي للترجمة الهاتفية على الرقم 131 450 وطلب إيصالكم ببلدية بانايول على الرقم 9490 4222.

如果你需要一名翻译, 请打电话到国家电话翻译服务处 (TIS National) 131 450, 再转接到 Banyule 市政府 9490 4222

若你需要口譯員, 請致電 131 450 聯絡 TIS National, 要求他們為你致電 9490 4222 接通 Banyule 市政廳。

Ako vam je potreban tumač, molimo vas, nazovite TIS National na broj 131 450 i zatražite da vas se spoji sa Vijećim općine Banyule na broj 9490 4222.

Se hai bisogno di un interprete chiama TIS National al numero 131 450 e chiedi di essere messo in comunicazione con il Comune di Bayule al numero 9490 4222.

Αν χρειάζεστε διερμηνέα τηλεφωνήστε στην Εθνική Υπηρεσία Διερμηνέων Μεταφραστών στον αριθμό 131 450 και ζητήστε να σας συνδέσουν με τη Δημαρχία Banyule στο 9490 4222.

Ако ви треба преведувач ве молиме јавете се на TIS NATIONAL на 131 450 и замовете да ве поврзат со Banyule Council на 9490 4222.

Haddii aad u baahan tahay mutarjum wac khadka qaranka oo ah TIS 131 450 weydiina in lagugu xiro Degmada Banyule tel: 9490 4222.

Nếu cần thông dịch, xin gọi cho TIS Toàn Quốc qua số 131 450 rồi nhờ họ gọi cho Hội Đồng Thành Phố Banyule theo số 9490 4222 giúp quý vị.