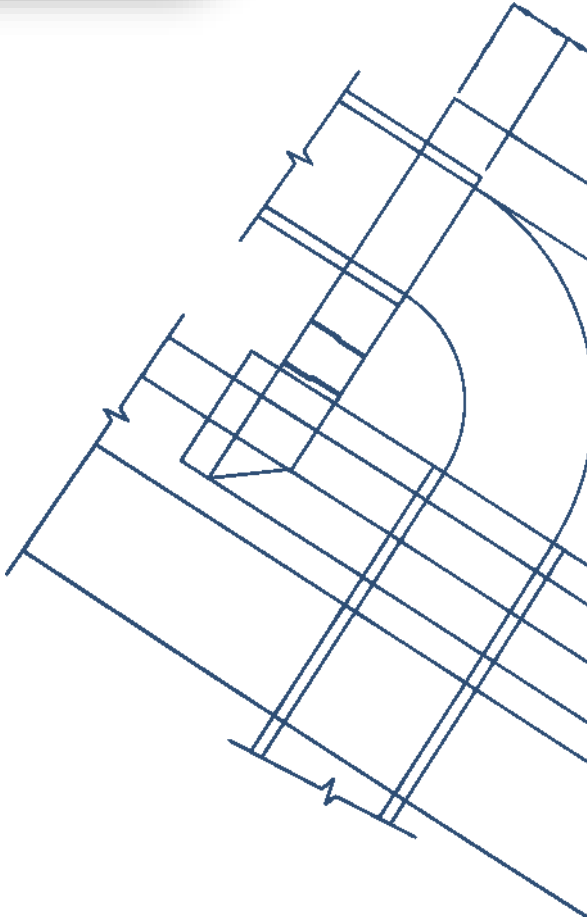
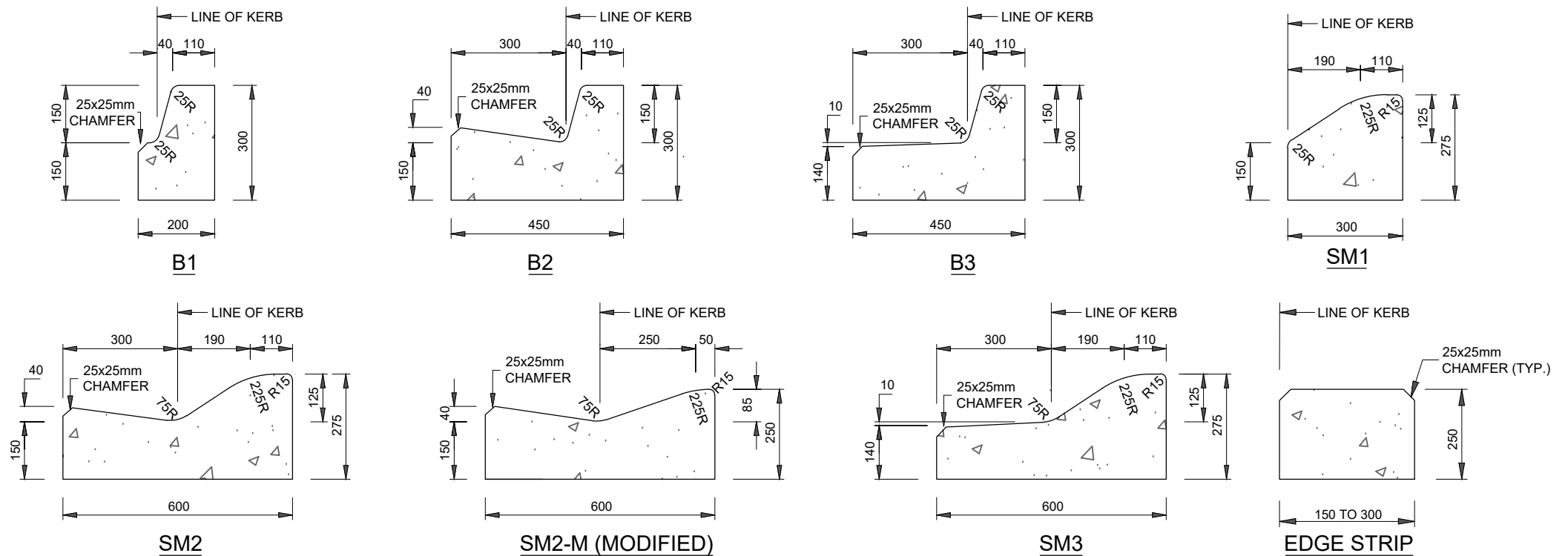


Kerb Profiles

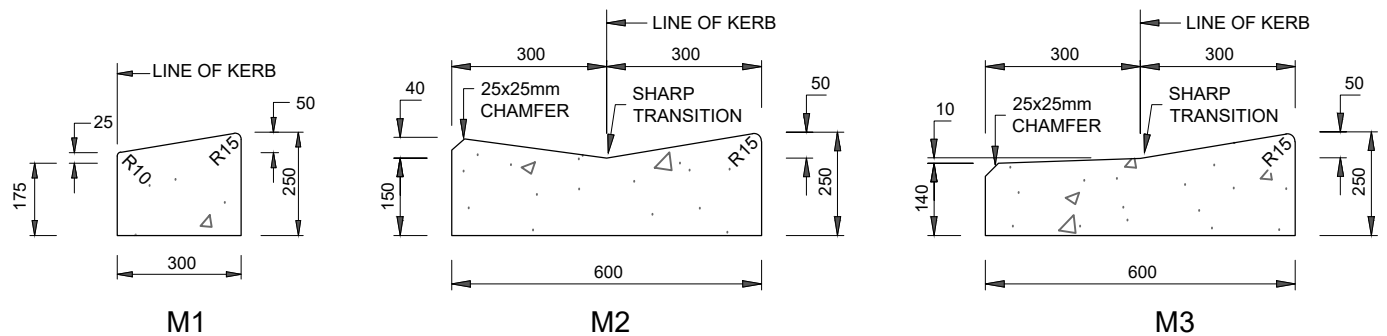


This page was intentionally left blank



NOTES:

- REFER TO AS. 2876-2000 CONCRETE KERBS AND CHANNELS FOR SPECIFIC REQUIREMENTS.
- REFER TO AUSTRROADS GUIDE TO ROAD DESIGN PART 3: GEOMETRIC DESIGN FOR THE RECOMMENDED USE OF KERBS AND CHANNELS.
- CONCRETE SHALL BE NORMAL CLASS N25 STANDARD STRENGTH GRADE COMPLYING WITH THE REQUIREMENTS OF AS. 1379. REFER TO VICROADS STANDARD SPECIFICATION 703 FOR REQUIREMENTS OF CONCRETE TO BE USED IN EXTRUSION MACHINES.
- BEDDING TO BE COMPACTED CLASS 3 F.C.R. SUPPLIED BY THE CONTRACTOR UNLESS OTHERWISE DIRECTED. (REFER R 165)
- INCREASE OVERALL KERB PROFILE (DEPTH OF CONCRETE):
 - 80mm FOR COMMERCIAL PROPERTIES
 - 80mm WITH L8TM TRENCH MESH FOR INDUSTRIAL PROPERTIES (MESH TO HAVE 40mm COVER)
- CONCRETE TO BE SMOOTH TROWELLED FINISHED ON TRAY AND KERB.
- CONCRETE SPONGE FINISHED ON LAYBACK.
- CONSTRUCTION JOINTS LOCATED:
 - 2500mm MAXIMUM SPACING
 - 75mm MINIMUM DEPTH
- ELIMINATE 25mm BULLNOSE ON ALL POSITIVE FALL PEDESTRIAN CROSSINGS.
- WIDTHS SPECIFIED IN CROSS SECTIONS ARE FACE (LINE) OF KERB MINIMUM.
- MINIMUM CONCRETE STRENGTH TO BE 25 MPA.
- LINE OF KERB IS USED TO DETERMINE CARRIAGEWAY WIDTHS.



ALL MEASUREMENTS IN MILLIMETRES

NOTES:
REFER TO THE NOTES ON THE DRAWING

TYPICAL KERB PROFILES 'B', 'SM' & 'M' TYPE

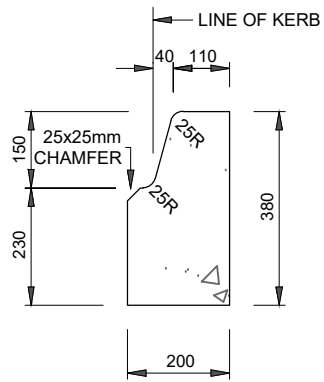
Banyule's Standard Drawings
A copy can be found on Banyule's website
www.banyule.vic.gov.au

Approved by: James Kelly
Manager Delivery & Assets

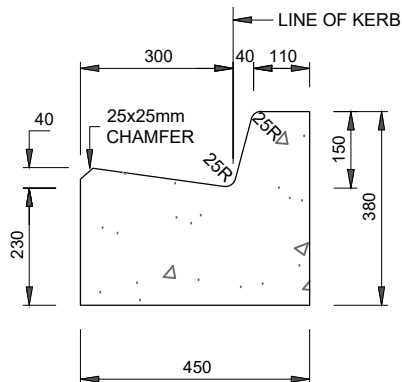
LAST UPDATED JULY 2019

R 150

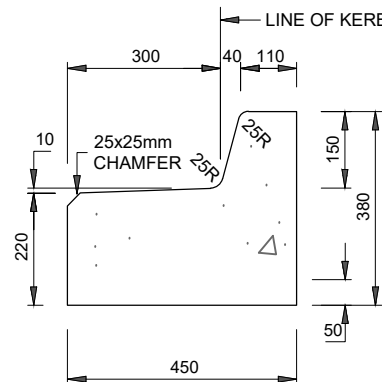
NOT TO SCALE



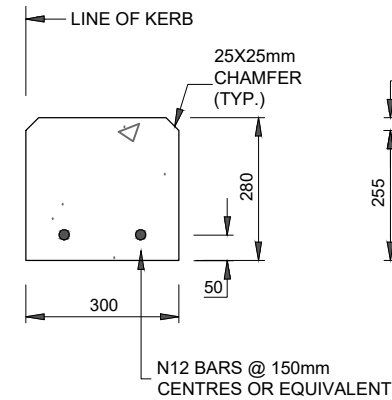
B1 (INDUSTRIAL)



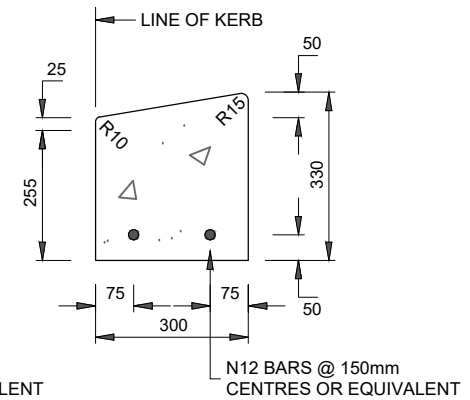
B2 (INDUSTRIAL)



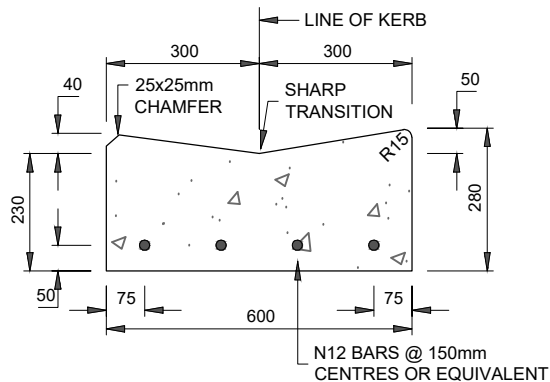
B3 (INDUSTRIAL)



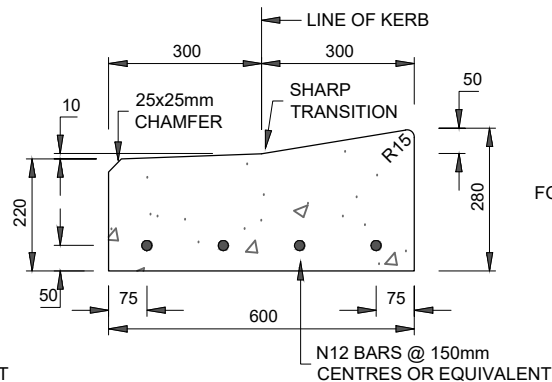
EDGE STRIP (INDUSTRIAL)



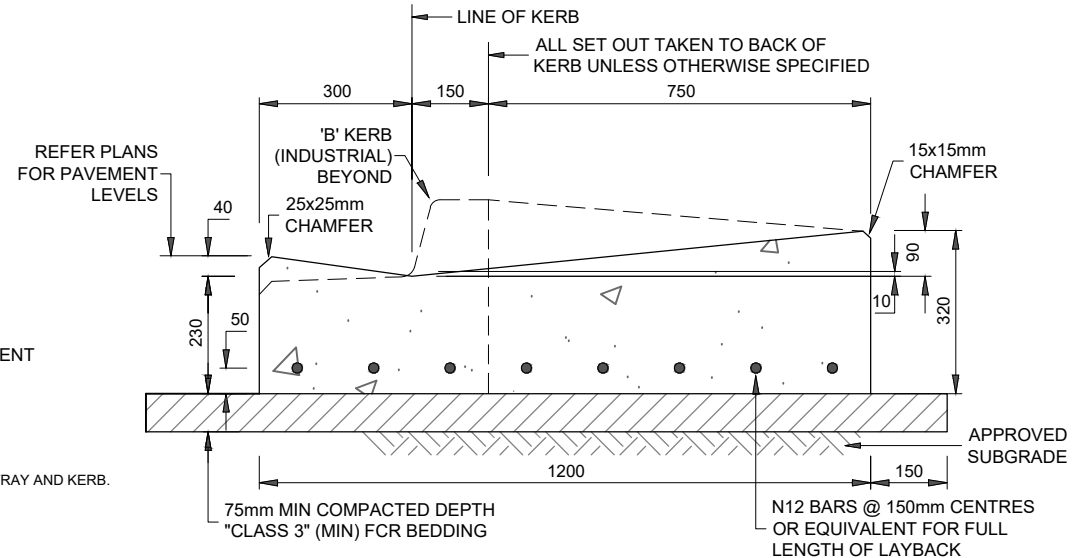
M1 (INDUSTRIAL)



M2 (INDUSTRIAL)



M3 (INDUSTRIAL)



TYPICAL INDUSTRIAL KERB LAYBACK

NOTES:

- REFER TO AS. 2876-2000 CONCRETE KERBS AND CHANNELS FOR SPECIFIC REQUIREMENTS.
- REFER TO AUSTRoadS GUIDE TO ROAD DESIGN PART 3: GEOMETRIC DESIGN FOR THE RECOMMENDED USE OF KERBS AND CHANNELS.
- CONCRETE SHALL BE NORMAL CLASS N25 STANDARD STRENGTH GRADE COMPLYING WITH THE REQUIREMENTS OF AS. 1379. REFER TO VICROADS STANDARD SPECIFICATION 703 FOR REQUIREMENTS OF CONCRETE TO BE USED IN EXTRUSION MACHINES.
- BEDDING TO BE COMPACTED CLASS 3 F.C.R. SUPPLIED BY THE CONTRACTOR UNLESS OTHERWISE DIRECTED. (REFER R 165)
- INCREASE OVERALL KERB PROFILE (DEPTH OF CONCRETE):
 - 80mm FOR COMMERCIAL PROPERTIES
 - 80mm WITH L8TM TRENCH MESH FOR INDUSTRIAL PROPERTIES (MESH TO HAVE 40mm COVER)

NOTES (CONT.):

- CONCRETE TO BE SMOOTH TROWELLED FINISHED ON TRAY AND KERB.
- CONCRETE SPONGE FINISHED ON LAYBACK.
- CONSTRUCTION JOINTS LOCATED:
 - 2500mm MAXIMUM SPACING
 - 75mm MINIMUM DEPTH
- ELIMINATE 25mm BULLNOSE ON ALL POSITIVE FALL PEDESTRIAN CROSSINGS.
- WIDTHS SPECIFIED IN CROSS SECTIONS ARE FACE (LINE) OF KERB MINIMUM.
- MINIMUM CONCRETE STRENGTH TO BE 25 MPA.
- LINE OF KERB IS USED TO DETERMINE CARRIAGEWAY WIDTHS.

REFER PLANS FOR PAVEMENT LEVELS

ALL MEASUREMENTS IN MILLIMETRES

TYPICAL INDUSTRIAL KERB PROFILES 'B' & 'M' TYPE

Banyule's Standard Drawings
A copy can be found on Banyule's website
www.banyule.vic.gov.au

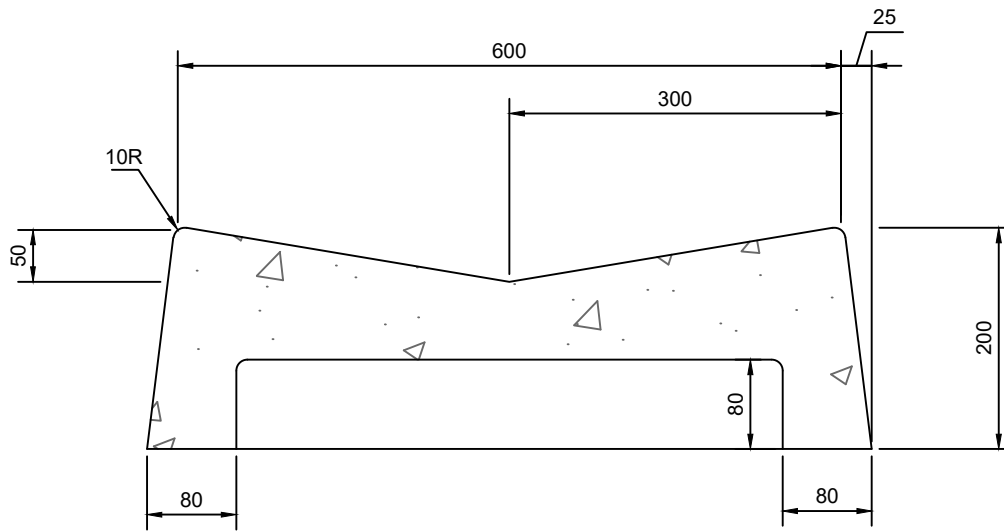
Approved by: James Kelly
Manager Delivery & Assets

LAST UPDATED JULY 2019

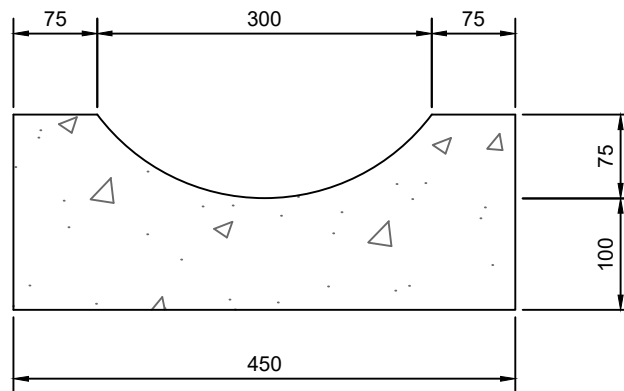
R 155

NOT TO SCALE

NOTE:
REFER TO THE NOTES ON THE DRAWING



600 OPEN INVERT CHANNEL



450 OPEN INVERT CHANNEL

NOTES:

1. CONCRETE STRENGTH TO BE 25 MPa
2. ALL DIMENSIONS ARE IN MILLIMETRES
3. AREA SHOWN HATCHED IS TO BE CUT BY TEMPLATE FOR ALL CONSTRUCTION JOINTS
4. CONSTRUCTION JOINTS TO BE NOT GREATER THAN 3m APART AND ARE TO BE AT REGULAR INTERVALS
5. ALL OPEN INVERT CHANNELS SHALL BE LAID ON A LAYER OF 50mm COMPACTED DEPTH OF 20mm CLASS 2 FINE CRUSHED ROCK

ALL MEASUREMENTS IN MILLIMETRES



Banyule
CITY COUNCIL

OPEN INVERT CHANNEL

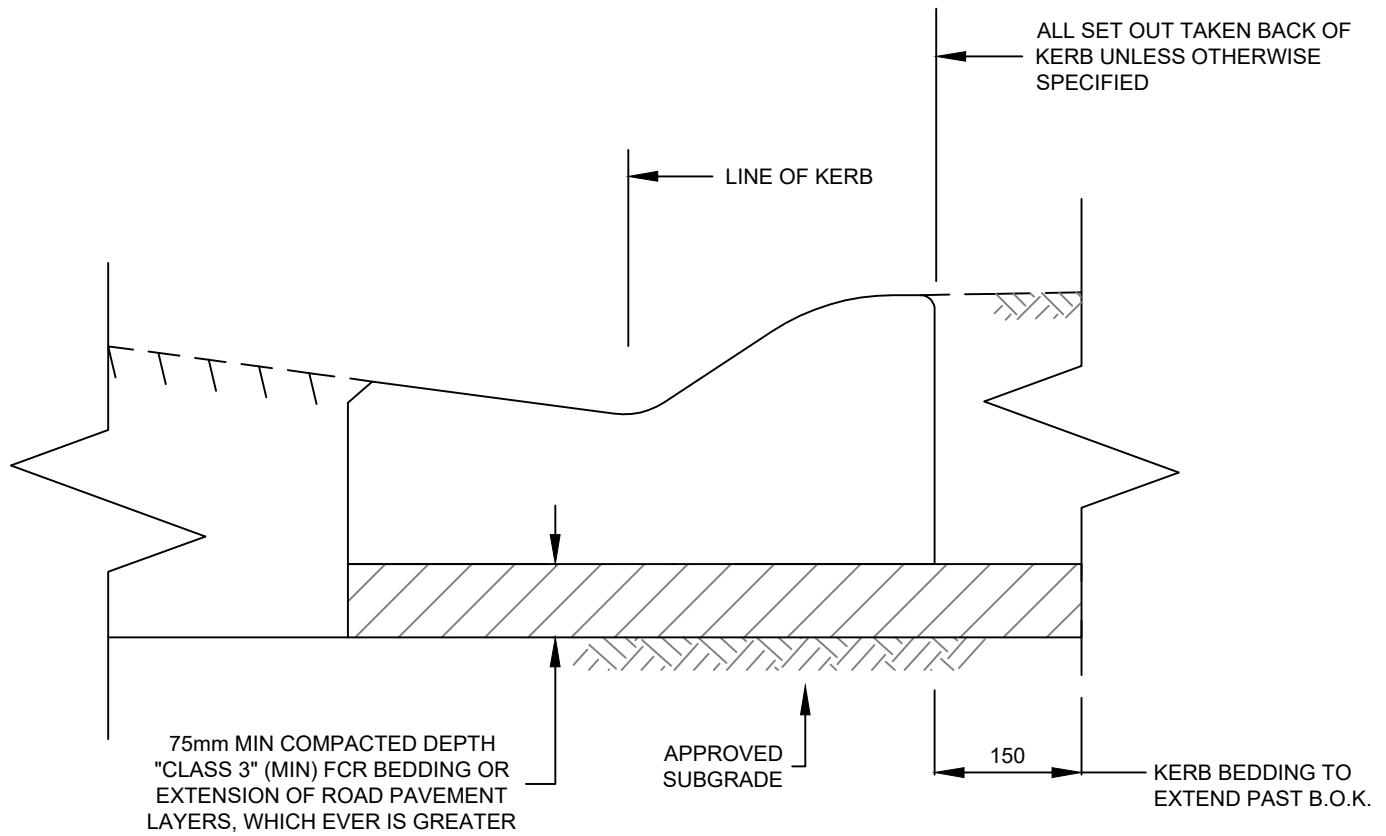
Banyule's Standard Drawings
A copy can be found on Banyule's website
www.banyule.vic.gov.au

Approved by: James Kelly
Manager Delivery & Assets

LAST UPDATED JULY 2019

R 160

NOT TO SCALE

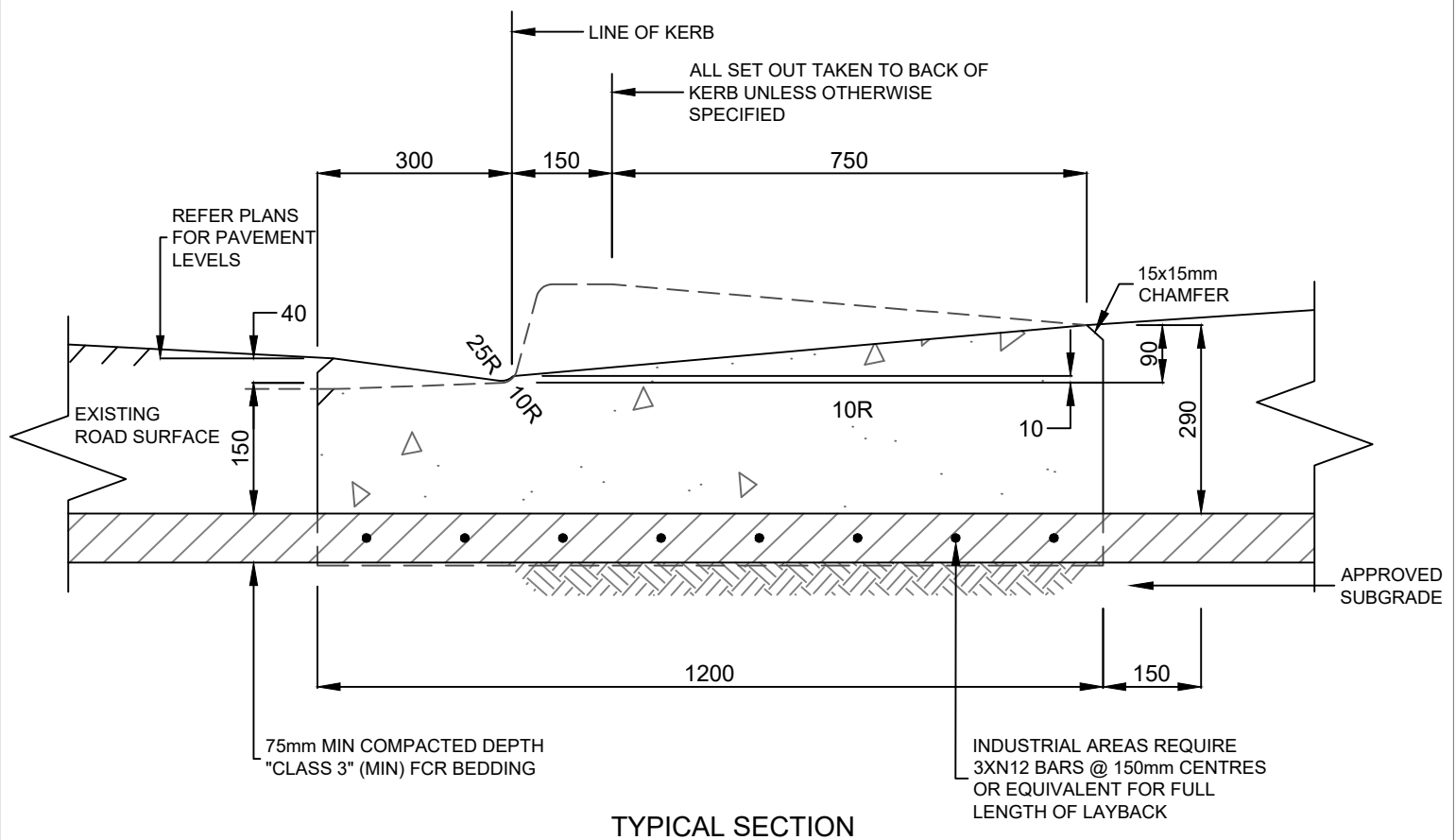


TYPICAL KERB BEDDING

NOTES:

1. BEDDING TO BE COMPACTED CLASS 3 F.C.R. SUPPLIED BY THE CONTRACTOR UNLESS OTHERWISE DIRECTED

ALL MEASUREMENTS IN MILLIMETRES




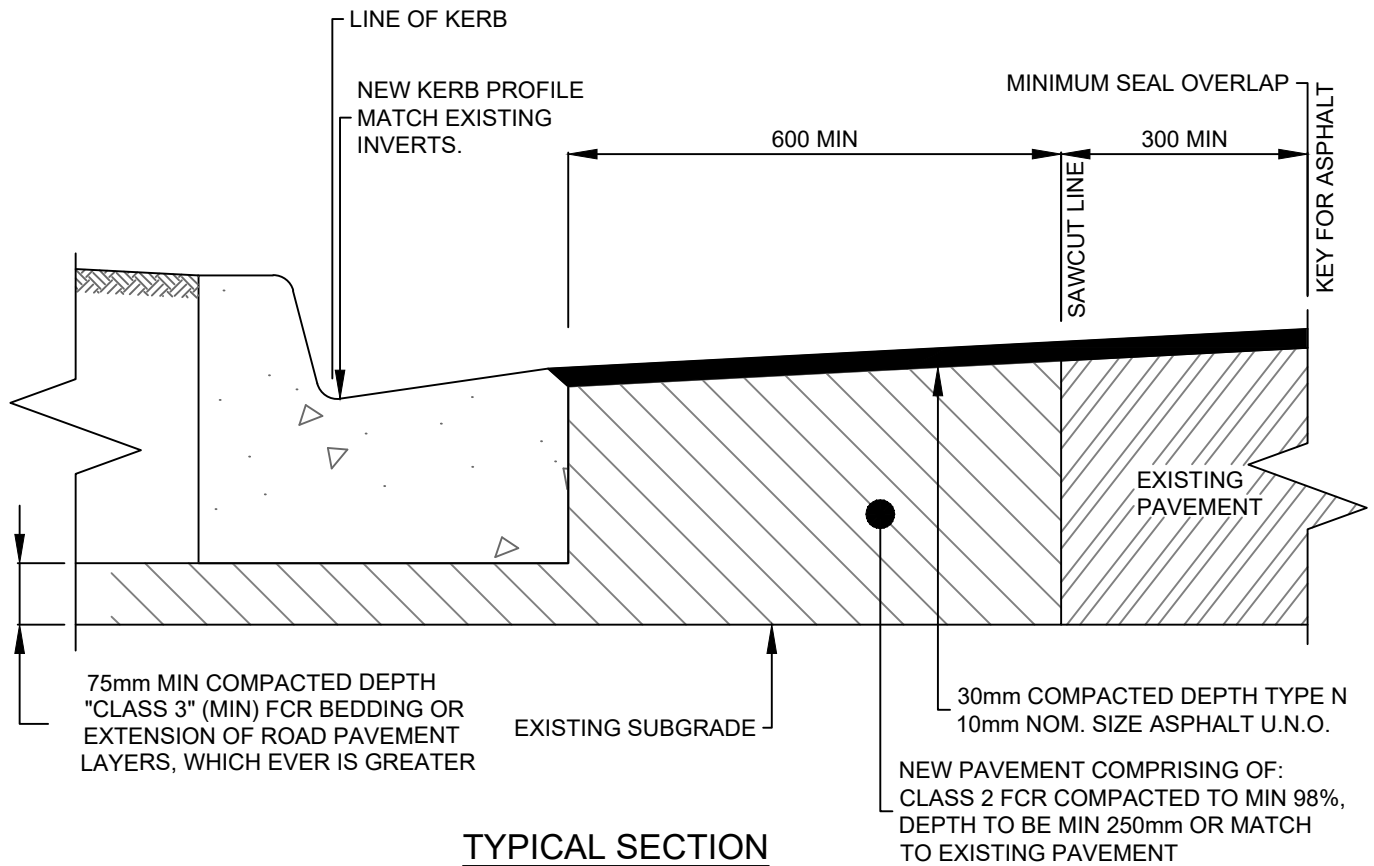
TYPICAL SECTION

NOTES:

1. REFER TO AS. 2876-2000 CONCRETE KERBS AND CHANNELS FOR SPECIFIC REQUIREMENTS
2. BEDDING TO BE COMPACTED CLASS 3 F.C.R. SUPPLIED BY THE CONTRACTOR UNLESS OTHERWISE DIRECTED
3. INCREASE DEPTH OF CONCRETE
 - a) 80mm FOR COMMERCIAL PROPERTIES
 - b) 80mm WITH SL72 MESH FOR INDUSTRIAL PROPERTIES (MESH TO HAVE 40mm COVER)
4. CONCRETE TO BE SMOOTH TROWELLED FINISHED ON TRAY AND KERB
5. CONCRETE SPONGE FINISHED ON LAYBACK
6. CONSTRUCTION JOINTS LOCATED - 2500mm MAXIMUM SPACING
- 75mm MINIMUM DEPTH
7. ELIMINATE 25mm BULLNOSE ON ALL POSITIVE FALL PEDESTRIAN CROSSINGS
8. WIDTHS SPECIFIED IN CROSS SECTIONS ARE FACE (LINE) OF KERB

ALL MEASUREMENTS IN MILLIMETRES

 <p>Banyule CITY COUNCIL</p>	<p>LAYBACK FOR 'B2' & 'B3' KERBING</p>	<p>LAST UPDATED JULY 2019</p>
	<p>Banyule's Standard Drawings A copy can be found on Banyule's website www.banyule.vic.gov.au</p>	<p>R 170</p>
	<p>Approved by: James Kelly Manager Delivery & Assets</p>	<p>NOT TO SCALE</p>



NOTES:

1. REFER TO AS. 2876-2000 CONCRETE KERBS AND CHANNELS
2. BEDDING TO BE COMPACTED CLASS 3 F.C.R. SUPPLIED BY THE CONTACTOR UNLESS OTHERWISE DIRECTED
3. CONCRETE TO BE SMOOTH TROWELLED FINISHED ON TRAY AND KERB
4. CONSTRUCTION JOINTS LOCATED - 2500mm MAXIMUM SPACING
- 75mm MINIMUM DEPTH
5. ELIMINATE 25mm BULLNOSE ON ALL POSITIVE FALL PEDESTRIAN CROSSINGS
6. WIDTHS SPECIFIED IN CROSS SECTIONS ARE FACE (LINE) OF KERB.

ALL MEASUREMENTS IN MILLIMETRES



**KERB AND CHANNEL INSTALLATION
ABUTTING EXISTING PAVEMENT**

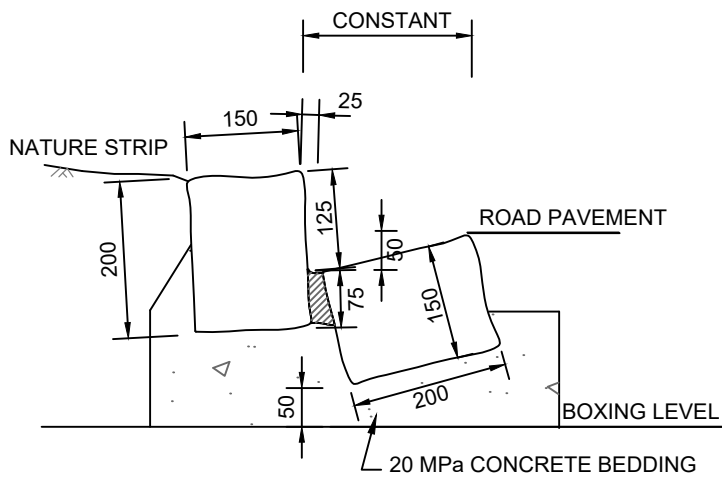
Banyule's Standard Drawings
A copy can be found on Banyule's website
www.banyule.vic.gov.au

Approved by: James Kelly
Manager Delivery & Assets

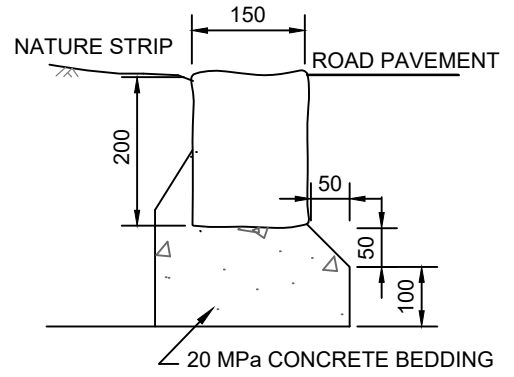
LAST UPDATED JULY 2019

R 175

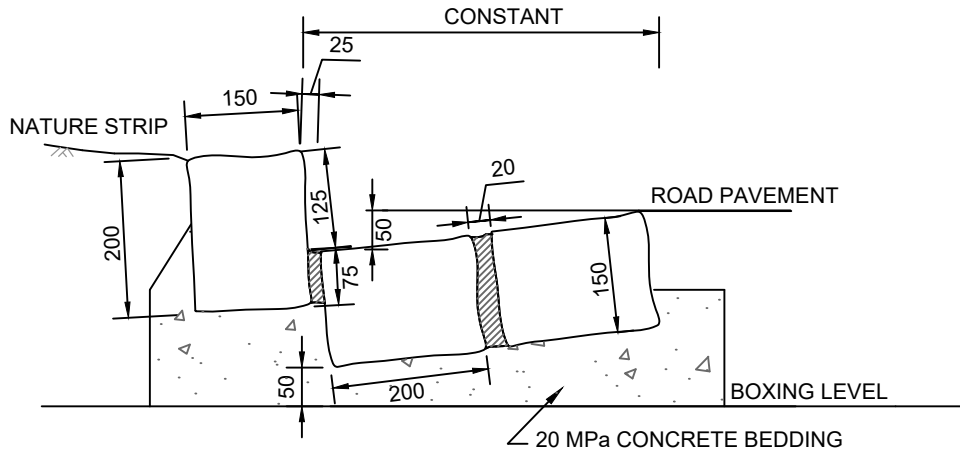
NOT TO SCALE



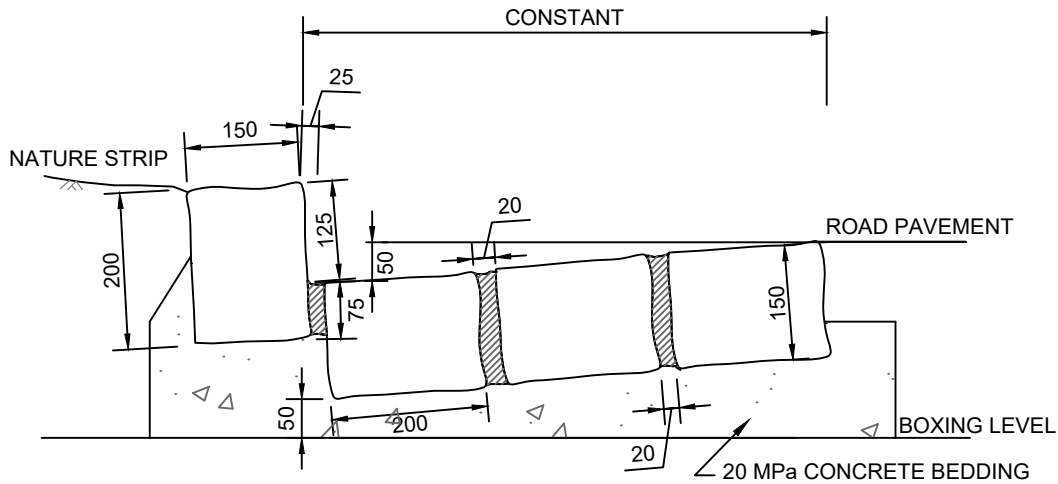
ONE PITCHER KERB



PITCHER EDGE STRIP



TWO PITCHER KERB



THREE PITCHER KERB

NOTES:

1. PITCHER SIZES QUOTED ARE AN AVERAGE SIZE ONLY.
2. ALL GROUTED JOINTS TO BE AVERAGE 20mm WIDE BY DEPTH OF PITCHER FLUSH FINISH ONLY. MORTAR TO BE CHARCOAL COLOURED.
3. PITCHERS TO BE BROOMED AFTER GROUTING HAS BEEN PLACED TO REMOVE EXCESS GROUTING.
4. WHEN RECONSTRUCTING EXISTING THE NUMBER OF PAVERS IS TO MATCH ORIGINAL DETAIL
5. WHEN INSTALLING NEW PAVERS THE PATTERN IS TO BE CONSISTENT WITH SURROUNDING AREA OR AS DIRECTED BY THE ENGINEER.

ALL MEASUREMENTS IN MILLIMETRES



Banyule
CITY COUNCIL

PITCHER KERB

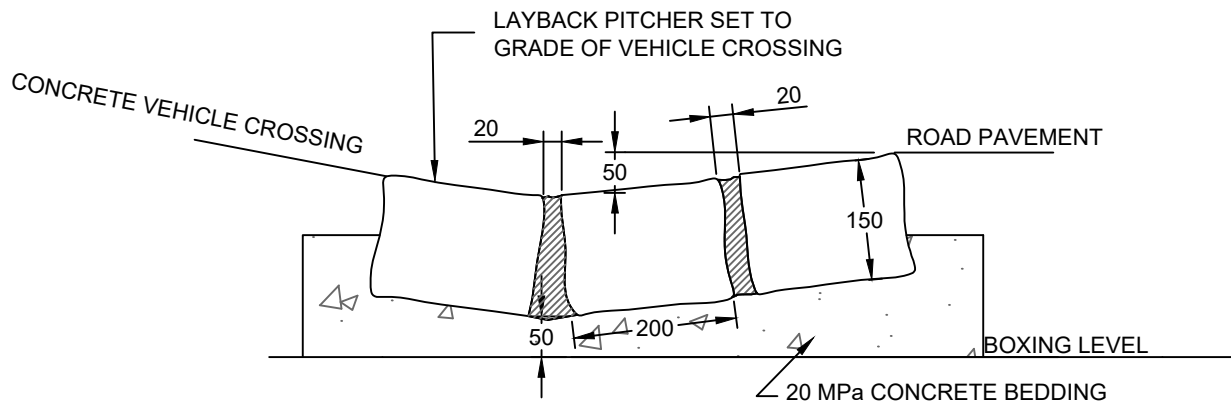
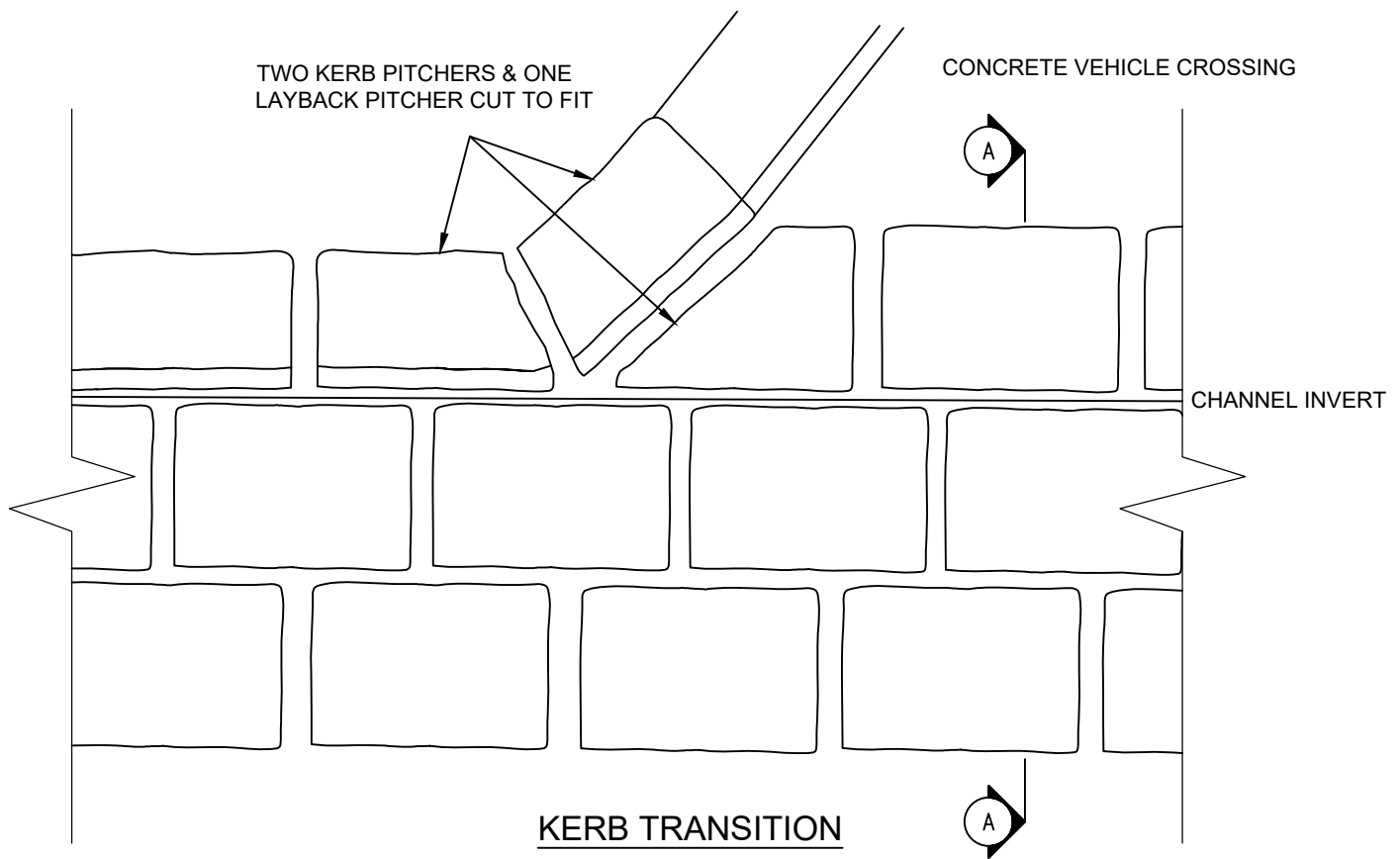
Banyule's Standard Drawings
A copy can be found on Banyule's website
www.banyule.vic.gov.au

Approved by: James Kelly
Manager Delivery & Assets

LAST UPDATED JULY 2019

R 180

NOT TO SCALE



SECTION A-A TWO PITCHER CHANNEL

NOTES:

1. PITCHER SIZES SHOWN ARE AVERAGE SIZES ONLY. USE PITCHERS OF BEST FIT
2. ALL GROUTED JOINTS TO BE AVERAGE 20mm WIDE BY DEPTH OF PITCHER, FLUSH FINISH ONLY. MORTAR TO BE CHARCOAL COLOURED.
3. PITCHERS TO BE BROOMED AFTER GROUTING HAS BEEN PLACED, TO REMOVE EXCESS GROUTING.
4. FOR REVERSE FALL CROSSINGS INVERT TO TOP OF LAY BACK DIMENSION 100mm.

ALL MEASUREMENTS IN MILLIMETRES



Banyule
CITY COUNCIL

TWO PITCHER TRAY KERB & CHANNEL AT CROSSING

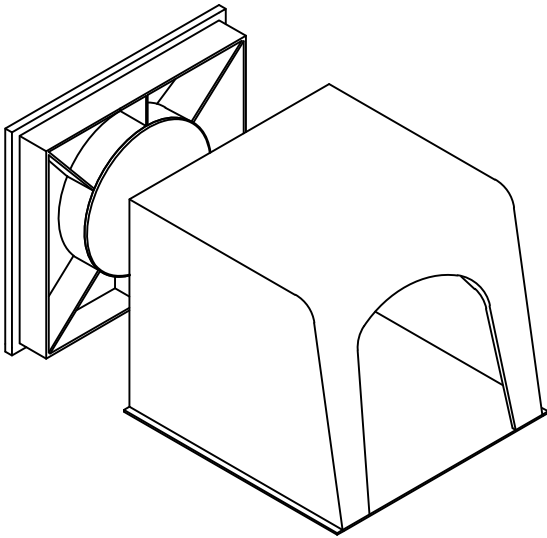
Banyule's Standard Drawings
A copy can be found on Banyule's website
www.banyule.vic.gov.au

Approved by: James Kelly
Manager Delivery & Assets

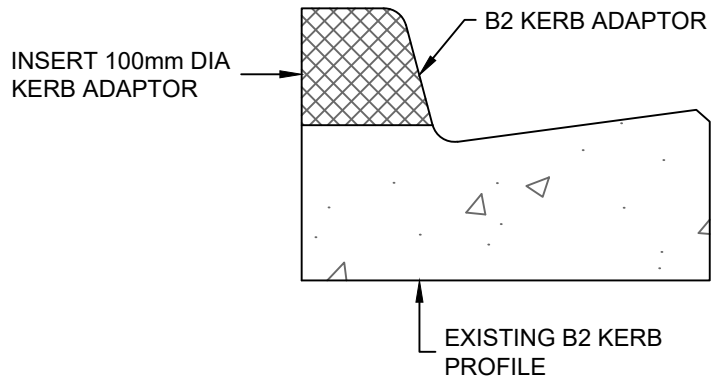
LAST UPDATED JULY 2019

R 185

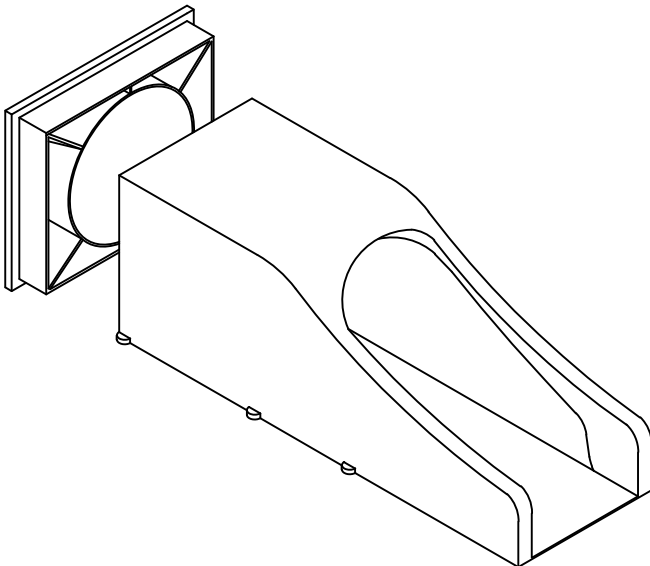
NOT TO SCALE



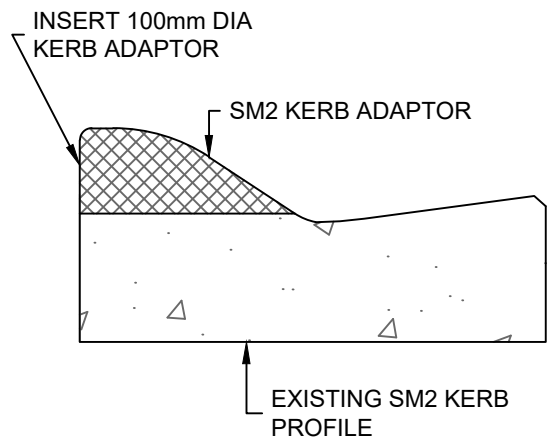
B2 KERB ADAPTOR



B2 KERB WITH HEAVY DUTY KERB ADAPTOR SECTIONAL VIEW



SM2 KERB ADAPTOR



SM2 KERB WITH HEAVY DUTY KERB ADAPTOR SECTIONAL VIEW

NOTES:

ALL KERB ADAPTORS ARE TO BE AN APPROVED PROPRIETARY PRODUCT CONSTRUCTED FROM HEAVY DUTY HOT DIPPED GALVANIZED MILD STEEL. KERB IS TO BE NEATLY SAW CUT & KERB ADAPTOR EPOXIED INTO POSITION. B2 KERB ADAPTOR NOW AVAILABLE IN GALVANIZED STEEL.

ALL MEASUREMENTS IN MILLIMETRES



HEAVY DUTY KERB ADAPTORS FOR 'B2' AND 'SM2' KERBS	
Banyule's Standard Drawings A copy can be found on Banyule's website www.banyule.vic.gov.au	
Approved by:	James Kelly Manager Delivery & Assets

LAST UPDATED JULY 2019
R 190
NOT TO SCALE

This page was intentionally left blank