

Banyule Banner

November 2021

04 Shaping Banyule

06 Supporting social enterprises

20 Ward Rounds



Banyule
City Council

Mayor's Message

Mayor
Cr Elizabeth Nealy



It is an honour and a privilege to serve as Mayor and I look forward to working with my fellow councillors and the community to continue improving Banyule for all those who live, work, play and do business here.

Trusted leadership and integrity

As Mayor I know we have a responsibility to the community to demonstrate best practice governance and integrity through our conduct and processes. By ensuring transparency, accountability and honesty, we build high levels of trust among the community.

Engagement and advocacy

A real focus of Council is to engage with our community so we can meet your needs and advocate on your behalf. Revised plans for the North East Link, which include a longer tunnel, show our commitment and dedication to keep advocating to other levels of government for better outcomes for our community (see p.23).

Building on the momentum

There are a lot of major projects in the pipeline, including the new Bellfield Community Hub, along with a host of upgrades to other community and sporting facilities. Plans are progressing for a bigger and better Rosanna Library plus a fantastic new town square for Watsonia. We also continue to build on the success of our Social Enterprise (see p. 6) and Inclusive

Employment programs, as well as keep implementing actions to be a carbon neutral organisation by 2028.


Plans in place for the future

We thank everyone who helped inform our Council Plan 2021-2025 and Financial Plan 2021-2031. These important documents have now been adopted by Council and ensure that our priorities align with our Community Vision 2041. I encourage you to view these at shaping.banyule.vic.gov.au/Banyule2041 and see the array of initiatives that make Banyule a thriving, sustainable, inclusive and connected community – a place where people are engaged, feel they belong, and the environment is valued and protected.

Reopening

There is a real sense of relief as restrictions ease and we welcome you back to our facilities, services and events. But like other businesses, we have had to change the way we interact with our customers to ensure we meet COVIDSafe requirements. Please make sure you check requirements for entry before you attend. Finally, on behalf of Council, I wish you a safe and happy festive season.

Stay in touch with us digitally


 Email newsletters

banyule.vic.gov.au/subscribe



@BanyuleCouncil

Have your say on important projects and local initiatives


 shaping.banyule.vic.gov.au

Council Meetings

 Upcoming dates:

6 December, 24 January

 From 7pm

 For location and up-to-date COVID restrictions, please check our website.

For agendas, minutes, public question time and request to speak forms, visit banyule.vic.gov.au/CouncilMeetings

Banyule City Council is proud to acknowledge the Wurundjeri Woi-wurrung people as Traditional Custodians of the land and we pay respect to all Aboriginal and Torres Strait Islander Elders, past, present and emerging, who have resided in the area and have been an integral part of the region's history.

Our community is made up of diverse cultures, beliefs, abilities, bodies, sexualities, ages and genders. Council is committed to access, equity, participation and rights for everyone; principles which empower, foster harmony and increase the wellbeing of an inclusive community.

Building a better Banyule

While competitive sports have had to take an unseasonal break due to COVID restrictions, there has been a lot of action happening to improve facilities for sporting clubs and the community. See what's happening around the grounds...



Binnak Park

Binnak Park, Watsonia North

- New pavilion with viewing deck, social space for club functions, and female-friendly change rooms;
- reconstructed sports field with improved lighting and an electronic scoreboard; and
- new cricket practice nets and more parking spaces.



Ford Park ovals and pavilion



Ford Park cricket nets, multi use court and fitness equipment

Ford Park, Bellfield

- New pavilion with office facilities and social space;
- resurfaced southern oval with upgraded sports field lighting;
- cricket practice nets, multi-use court, basketball half-court;
- outdoor public exercise circuit; plus
- upgraded and expanded car park.

Upgrades delivered by the Victorian Government as part of the North East Link project.

Shaping Banyule

Get involved in local projects



Reimagining Olympic Leisure Centre

It's time to reimagine, reshape and upgrade Olympic Leisure Centre (OLC) in Heidelberg West.

We want to redesign a new facility with you that is valued and well-utilised by the local community. Some ideas already shared by the community include library services, meeting, co-working and youth spaces, as well as continuing activity-based programs like basketball, exercise classes and gym workouts.

This is a great opportunity to upgrade the centre to be more in line with what the community wants and needs, today and into the future. To achieve this, we're proposing not to have pools, a sauna or spa in the longer term. Dating back to 1956, the centre is old and rundown. It has been closed since April 2021 due to COVID-19 restrictions and repair works to fix a leaking pool. The pools are almost at the end of their life and there is a continual decline in members, casual users and, in particular, pool users.



Help re-imagine OLC

What activities and facilities do you want to see at OLC? Your ideas will be used to create concepts for a new centre. Visit shaping.banyule.vic.gov.au/OLC to get involved. Plus, look out for engagement activities in January 2021.

Services reopen

We're delighted to have recently reopened many of our services.

From customer service centres and libraries, through to our aquatic facilities, childcare centres and waste transfer centre, it's great to see you again.

Please note: due to COVIDSafe requirements, some services require patrons to show evidence of being fully vaccinated and wear a face mask.

Restrictions can change, so it's always best to check before you visit. Call **9490 4222** or go to banyule.vic.gov.au

New phone system

We recently introduced a new phone system to help connect you directly to the teams that look after the most frequent requests. Call us on 9490 4222 and choose an option to speak directly to some of our key departments, or at any time, simply press 9 to speak to our friendly customer service team, who can help with everything else.





Building a framework for community services and infrastructure

Did you know Council manages 145 buildings, which are used to deliver a wide range of community services and programs? To guide future investment for these community services and buildings, we're developing a Community Service and Infrastructure Framework.

This framework will underpin our planning and decision-making to ensure our buildings, and the services they house, meet the needs and interests of our community while creating new opportunities to improve our neighbourhoods.

We invite you to help shape the framework by providing your feedback at shaping.banyule.vic.au/CS&IF



A new Watsonia Town Square

We've released several different concepts for a vibrant, flexible and functional town square for Watsonia and been getting feedback from the community.

Follow the project and see the designs at shaping.banyule.vic.gov.au/WatsoniaTownSquare

This project is supported by a \$5.5 million funding contribution from the Victorian Government and additional funding contributions from Council.

Supporting social enterprises

Banyule's social enterprise partners offer quality products and great service while providing supported training and jobs for our community. Support a good cause by checking out your local social enterprise.



Chancez Café

Since opening in May 2019, Chancez Café has provided coffee, light meals and friendly service for users of Warringal Parklands in Heidelberg. There is covered outdoor seating at the café in Possum Hollow Playground in Beverley Rd. Chancez offers NDIS-funded learning pathways for participants to develop hospitality skills and confidence.

"We've seen so many participants get the benefit of learning in this wonderful café and it was such a shame to close temporarily due to COVID-19. We can't wait to reopen and continue to serve our customers while offering life-changing opportunities for participants." - Helen Ryan, General Manager, Community Participation - Araluen

Chancez Café aims to reopen in November.
For opening times, visit araluen.org/chancez-cafe



For Change Co. Café

Coming soon as part of our new Bellfield Community Hub, For Change Co. Café promises Melbourne-quality coffee as well as plant-based meals and sweet treats. But the main aim of Banyule's newest social enterprise partner is to create pathways out of homelessness for young people. The cafe will support young people from Bellfield, Heidelberg West and Heidelberg Heights, giving them paid on-the-job training in hospitality and broader employment skills.

"It's a privilege to work with For Change Co. as they don't only help me financially but help me build myself as a person."
- Trainee Ben* (name changed)

For Change Co. is set to open around May 2022.
For further details visit forchangeeco.com.au



Boots For All

Celebrating 15 years in the Banyule community, Boots For All dissolves barriers to sport and social inclusion by collecting and repurposing excess sporting goods for children and adults in need. They operate Sport for All social enterprise sports store in Briar Hill, which provides training and employment pathways for people who face barriers to employment.

"It's terrific to be part of Banyule's Inclusive Employment Transitional Pathways program. We remain committed to providing practical training, workplace experience and employment opportunities while providing access to quality new and repurposed sporting goods for our community." - Joanne Rockwell, Boots For All CEO

Sport for All is at 21 Sherbourne Rd, Briar Hill. For donation and opening times visit bootsforall.org.au



The Community Grocer

The Community Grocer sells top-quality fruit and veg at low prices at its weekly market in Heidelberg West. The market traded throughout lockdowns, providing community connection and a safe place to shop. It's open to everyone and you can also order from a selection of boxes for once-off or weekly pick up.

"Working with The Community Grocer has been a dream come true, especially being able to help the community by providing access to affordable and fresh fruit and vegetables."
- Nadhirah Haleem, Heidelberg West market manager

The Community Grocer, Bell St Mall, Sat 9am - 1pm.
Order a box to pick-up at thecommunitygrocer.com.au



The Little Social

The Little Social serves great coffee and nutritious food from its café at Rosanna station, while fulfilling its charter of "empowering young people to lead meaningful lives" by providing hospitality training and homelessness support. The business is run by Youth Projects, an independent registered charity that aims to break the cycle of disadvantage.

"It makes such a difference to be working in a workplace where I feel supported. This job has really kept me going during a tough time." - Trainee Courtney* (name changed)

The Little Social is open Mon - Fri, 7am - 2pm.
Visit facebook.com/TheLittleSocialCafe.



Banyule Children's Gift Appeal

Bring some joy to those in need by donating to the Banyule Children's Gift Appeal.

Over the past 25 years, we've seen a fantastic response from the Banyule community, who have donated new toys, books, gifts and money to local children and families experiencing financial hardship, through the Banyule Children's Gift Appeal.

This year, many families are doing it even tougher. Recurring and lengthy COVID-19 lockdowns have created income insecurity and job losses. Disadvantage and financial hardship affect families in our community in many ways. Being a single parent family, having a disability, or having a significant change in circumstances all present unique challenges.

In 2021, we're working with local emergency relief providers Diamond Valley Community Support, BANSIC and the 3081 Angels to deliver the Banyule Children's Gift Appeal. During November and December, donations of new gifts and toys can be made at:

- **Diamond Valley Community Support, Shop 378a, Level 3, Greensborough Plaza**
- **WaterMarc entrance, ground floor, 1 Flintoff St, Greensborough**
- **Rosanna Library, 72 Turnham Ave, Rosanna**
- **Watsonia Library, 4/6 Ibbottson St, Watsonia**
- **Ivanhoe Library and Cultural Hub, 275 Upper Heidelberg Rd, Ivanhoe**

You can also donate money to the appeal at banyule.vic.gov.au/GiftAppeal



Christmas celebration to spread cheer

While Christmas sees many people gather with friends and family for a meal and to celebrate, for some in our community it is a time that compounds feelings of isolation and hardship.

To support people during this period, we're providing funding to several local community organisations to help them offer a free Christmas celebration in December for socially isolated or disadvantaged community members.

To find out more about specific times and locations, visit banyule.vic.gov.au/ChristmasCelebration



Denis Walter

Carols by Candlelight


Be part of Banyule's iconic festive celebration!


This year, we're bringing this much-loved community event to a new location at Greensborough War Memorial Park. And as per usual, we've pulled together a dazzling line-up of entertainment for you, featuring:

- **Denis Walter** – one of Australia's most popular entertainers for over 50 years
- **Euan Doidge** – performed in Charlie and the Chocolate Factory and Les Misérables
- **Tayla Coad** – credits include Legally Blonde the Musical and Grease
- **The Australian Children's Choir**
- **The Diamond Valley Brass Band**
- **Elf, Frosty and Santa**

Bring along a chair or rug and picnic, or purchase food and drinks from the onsite food trucks. Grab your LED candle and songbook, and sing along. Food trucks operate from 6pm. Carols start at 7pm.

If you can't come to the event, join us via livestream and sing along from home!

 **Saturday 18 December**
6pm – 9pm

 **Greensborough War Memorial Park,
McDowell St, Greensborough**

Limited places. Bookings essential at banyule.vic.gov.au/carols

Event subject to COVID-19 restrictions and proof of double vaccination. Check our website and socials for any updates closer to the event.

This event is proudly supported by



Boulevard Lights 2021

Although a wonderful tradition for the Banyule community, Boulevard Lights cannot go ahead this year due to COVID-19 restrictions relating to large scale events. This means Council will not provide any traffic management, entertainment or promote the event.

Residents are not restricted from decorating their homes and Victoria Police has confirmed that it will

monitor traffic and crowds in the area throughout December. If you have concerns regarding crowds gathering along The Boulevard, we ask that you report it to Heidelberg Police Station on 9450 8000.

We appreciate your understanding and hope you have a safe and enjoyable festive season.

Jobs Victoria Advocates in Banyule



The Jobs Victoria Advocate program has officially launched at Banyule

Looking for employment, education and training support?

We are offering flexible support services to community members aged 15+ years who are looking for:

- Career, education, training and employment advice
- Resume, cover letter and interview skills
- University and TAFE applications
- Career planning and goal setting
- Direct referrals to employment support
- 1:1 inclusive pre and post employment support
- Linkages into local community groups and programs

Want to know more?

Visit banyule.vic.gov.au/JobsHelp or call us today on 9049 3361

This program is supported by the Victorian Government's \$619.4 million Jobs Victoria initiative. Jobs Victoria helps people looking for work to access the support, information and advice they need to find a job that's right for them.



Environment grants open soon!

Do you have a fantastic idea for a project that supports Council's climate action and environmental goals?

We'd love to hear from you and help get your project off the ground, or in the ground, if you're thinking something horticultural!

Applications open in January 2022. For more details, go to banyule.vic.gov.au/Grants



REDISCOVER LOCAL.

BUSINESSES IN BANYULE

Looking for a special gift for a special person this Christmas? You don't need to look far. Banyule is home to a bunch of wonderfully creative and unique small businesses where you can find that perfect present, all you need to know is where to look.

That's why we've introduced our Rediscover Local Business Directory. With over 1000 small business listings – and growing every day – you'll find the perfect place to pick up that perfect gift.

Whether you're looking for a gift that says, 'I love you', 'take some time out for yourself', 'let's learn rumba together', 'let's eat', or simply 'thank you', you're bound to find it in Banyule.

And when you choose to share the local love this Christmas, you'll be supporting a business that supports your community.

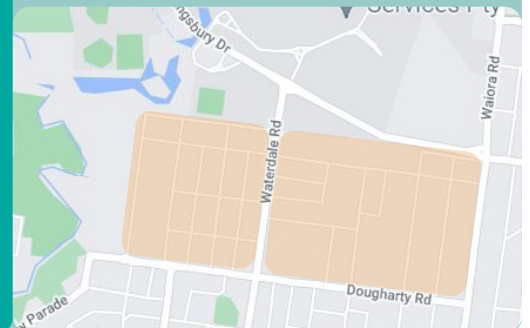
rediscoverlocal.com.au



Rediscover Heidelberg West Business Park

Located on both sides of Waterdale Road, Heidelberg West Business Park is home to over 600 businesses, big and small, local and international.

It's been a tough two years but our businesses are still here and ready to fix, bake, build, cook, print, grow, craft, sing, manufacture, entertain... anything you wish for. It's all here at your doorstep without leaving your home, visit hwbp.com.au



Online services

Now it's even easier to do transactions with us. Jump online to:

- Pay your rates
- Book a hard waste or green waste collection
- Register your cat or dog
- Renew your pet registration
- Pay non-parking infringements

banyule.vic.gov.au



Bushland diaries

Caring for threatened species

St Helena Reserve



Dianella amoena - Matted Flax-lily - endangered nationally and in Victoria



Pterostylis smaragdina - Emerald-lip Greenhood - rare in Victoria



Banksia marginata - Silver Banksia - Critically endangered in Greater Melbourne

What first comes to mind when you think about protecting threatened species?

Chances are you're thinking of an animal of some sort. Equally important when it comes to conservation is the protection of rare and threatened plant species. After all, plants form the foundation of just about every ecosystem on the planet and their protection is vital for its ongoing health.

Banyule is home to over 20 plant species listed as rare or threatened in Victoria. Due to the pressures of urbanisation, these species risk becoming locally extinct without the careful management of our bushland reserves.

What are we doing to help?

Our Bushland Management Unit (BMU) works to protect and enhance Banyule's biodiversity and this includes the protection of our rare and threatened species.

Weed management is crucial to the ongoing survival of these species to reduce competition for resources and maximise the opportunity for growth. In some instances, species listed as critically endangered in Greater Melbourne can be reintroduced to reserves through planting as has been done along the Darebin Creek corridor with Silver Banksias (pictured). Continued monitoring of known populations is important in understanding their relative health and helps to guide management.

A flourishing example of protection

Nestled in Eltham North, St Helena Bush Reserve contains an incredible diversity of remnant indigenous flora. It has:

- 140 locally indigenous plant species
- 2 listed as rare or threatened in Victoria
- 8 vulnerable in Greater Melbourne
- 1 critically endangered in Greater Melbourne.

With the much-appreciated help of volunteers, the BMU controls weeds in the reserve and monitors the health of the flora populations annually to ensure their ongoing survival. Join the Friends of St Helena Bush Reserve if you'd like to get involved.

Scan this code to find out more



Growing up with healthy food

With 2 in 3 children in Banyule not eating enough fruit and vegetables, we need to change what's on the menu.

And as part of the Banyule Child, Youth and Family Committee, Kristina Murray-Hally has been cultivating some fresh ideas to get young families eating more healthily and growing their own food.

The committee has set up a 'Gardens for Children' project, looking to embed the importance of good nutrition and the joys of community gardening.

**“ We're really trying to encourage families with healthy eating.
— Kristina ”**

The Ivanhoe East mother of two is working with the committee to deliver fun activities during the summer holidays in partnership with Sustainable Macleod and Farm Raiser in Bellfield.

There will also be a focus on growing and using native plants in meals.

With a passion for local food and her local community, the children's author looks forward to the committee making a difference and improving the health of children and families of Banyule.

Look out in the school holidays at [banyule.vic.gov.au/WhatsOn](https://www.banyule.vic.gov.au/WhatsOn) for 'Gardens for Children' activities.



Grow your own cucumbers

Here are some tips to get you started:

1. Choose a spot in your garden that gets plenty of sun and be sure that there is fertile, well-draining soil.
2. Plant your cucumber seeds in rows about 2.5cm deep and 25cm apart – cucumbers need space to grow.
3. Keep the soil evenly moist by watering once or twice a week, first thing in the morning.
4. Cucumbers love compost – a good amount of compost will encourage fruiting.
5. Once your cucumbers are growing, be sure that you harvest them regularly so that they continue to produce.

Try this popular kid-friendly recipe for cucumber and apple 'spaghetti'

- 1 cucumber (skin on)
- 1 apple (firm and juicy, skin on)
- Squeeze of lemon juice
- 1 tbsp oil
- Using a vegetable spiraliser, spiralise your cucumber and apple into a large bowl. Squeeze lemon juice over your spaghetti, add oil and mix well. Enjoy your fresh, crunchy spaghetti!

Outdoor Movies

Each summer we host a program of free outdoor movies at locations throughout Banyule. These are family-friendly events where you can enjoy activities before the film. **BYO** blanket or deckchair and a picnic.



📅 Saturday 15 January

📍 Sills Bend, Beverley Rd,
Warringal Parklands, Heidelberg

📄 Bookings at trybooking.com/BUTSW

Book your spot
by scanning
the code!



4pm-6.30pm

Paddington (rated G)



6.30pm-8.30pm

Scoob! (rated PG)



📅 Saturday 29 January

📍 Petrie Park, Mountain View Rd,
Montmorency

📄 Bookings at trybooking.com/BUTTE

Book your spot
by scanning
the code!



4pm-6.30pm

Paddington 2 (rated G)



6.30pm-8.30pm

Missing Link (rated PG)



Please note, events are subject to COVID restrictions and proof of double vaccination.

Events supported by Banyule City Council Arts and Culture grants

Artsish

Artsish is a digital art showcase that features, fosters and furthers the work of diverse artists in the Banyule community.

Discover local artists' stories by listening to podcasts while viewing their artwork online. This one-of-a-kind virtual showcase will stimulate your curiosity and imagination by featuring unique art in all its forms, from music to graphic design and poetry.

Artsish launches in December at artsish.org



Stop, Listen

Stop, Listen is a public sound art installation by Vincent Giles and Alice Bennett that uses listening shrouds at Yallambie Park and Warringal Parklands (pictured) to allow people to intimately listen to the wonder of the environment around them.

Inspired by observation of humans engaging with resonant objects, such as seashells, the work celebrates the abundance of acoustically rich fauna and encourages a stronger auditory connection to place.

For more information on dates and exact locations, visit banyule.vic.gov.au/StopListen



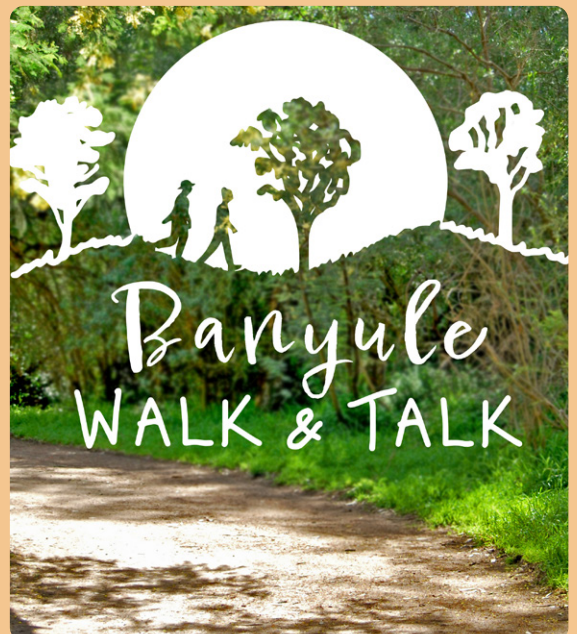
Banyule Walk & Talk

Banyule Walk & Talk is an exciting new web-series created by local artists Troy Larkin and Lou Endicott that highlights different urban nature walks in Banyule.

The idea for the series was born out of the 2020 COVID-19 lockdowns, when both artists relied heavily on Banyule's green spaces for exercise, mental well-being and a place to recharge and relax.

Each 5-minute episode explores different local parklands and the historical, cultural and environmental attributes that make each walk unique.

For more information, go to banyule.vic.gov.au/WalkandTalk



Ivanhoe Library & Cultural Hub

Events & activities

Art Gallery 275 will remain closed for the remainder of 2021.
Loft 275 will be open for exhibitions, subject to COVID-19 restrictions.

📍 275 Upper Heidelberg Road, Ivanhoe

Ivanhoe Library & Cultural Hub is subject to COVID-19 restrictions and proof of vaccination status. If unsure, please call or check our website for details and any updates prior to visiting.

🌐 banyule.vic.gov.au/ILCH

✉ arts@banyule.vic.gov.au

☎ 9490 4222



Germinate

by Felicity Gordon

📅 19 November – 5 December

📍 Loft 275

Engagement, collaboration and permaculture have long formed the basis of Felicity Gordon's work. Using collage, paper, and violent splashes and pools of ink, the artworks in this exhibition mimic microscopic underground communities of bacteria and fungi, a largely unknown world of immense power and diversity. Germinate invites community members to get close to nature, and gain an appreciation of the enchanting and naturally occurring systems of decay and renewal. Gallery visitors will be able to take a food plant seed to germinate at home.

With support from Council's Environment team.
For more info, visit: felicitygordon.com

Image / Seed Pods (2021), by Felicity Gordon



Bubbles

By Joe Pascoe and Don Walters

📅 10 December – 16 January

📍 Loft 275

The collaborative creation of artist Don Walters and poet Joe Pascoe, Bubbles is an every-person character who finds life a little bewildering, but still has wonder and hope.

You're invited to join Bubbles and their friends on a joyous adventure together. This exhibition displays the original artworks and the respective poems from a soon-to-be-published book, *Bubbles: On an Island Somewhere South of Paris*, by the creative duo.

Image / Distracted (a Bubbles artwork) by Don Walters



FILM+ (Experimental Film Nights)

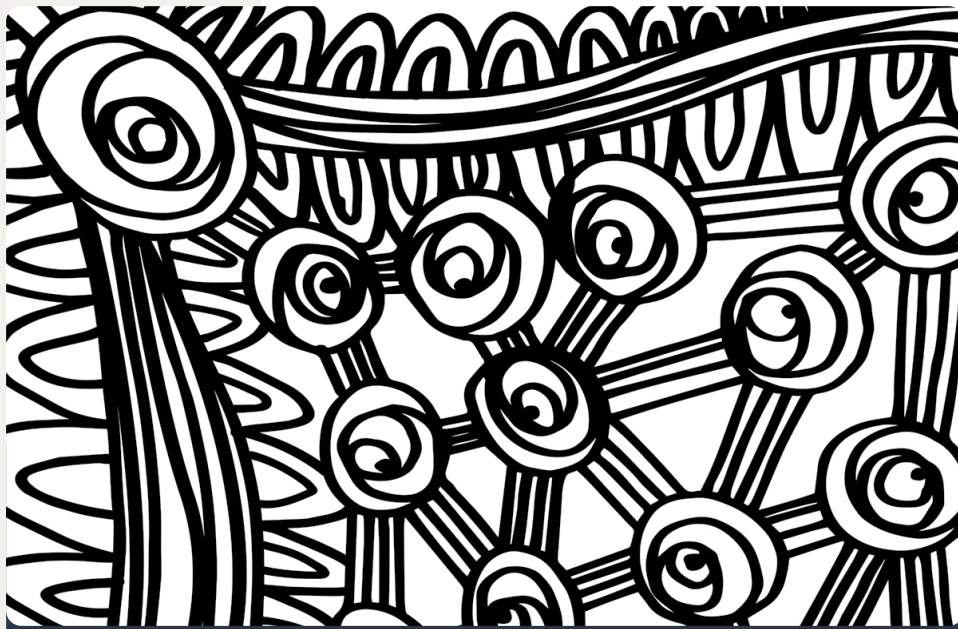
📅 Thursday 18 November, 6.30pm-8pm

📍 Yarra-me Djila Theatrette

FILM+ is a night of short films and video art curated by local filmmaker Jutta Pryor, via her association with filmmakers and film festivals across the globe. Each event will be themed and presents an international collection at the forefront of experimental film. This is a unique opportunity to discover the latest directions, with access to the vision of international filmmakers.

POETICISM is the first presentation, a diverse international collection of curated works covering a multitude of personal interpretations on that theme. Limited seats. Bookings essential at trybooking.com/BSQOR

Image / Jutta Pryor producing live video as part of a live performance event: Windows of Longing: The Art of Edward Heffernan.



The 2021 Banyule Award for Works on Paper – Finalists Exhibition

📅 14 January – 13 March 2022

📍 **Award Ceremony: check our website closer to the date**

The Banyule Award for Works on Paper Finalists Exhibition is an important exhibition which has been rescheduled to launch our 2022 program. The theme for this edition of the Banyule Award for Works on Paper is 'Community'. In this COVID world, we asked artists to consider what community means to them, and to provide us with inspiration and reflection through their various works on paper.

The Banyule Award for Works on Paper is awarded every two years to an outstanding contemporary work on paper. This is a prestigious national art prize, with the winning artwork acquired for the Banyule Art Collection. The winner will be announced at the award ceremony.

Please note that a short wait time may occur during busy periods, as we operate to density limits.

Image / (detail of) Banyule (2020) by Wesley Fuller



December cards for mental health patients

In December, we encourage you to anonymously write a greeting card for a mental health patient at the Austin Hospital. Please drop your card at Watsonia, Rosanna or Ivanhoe libraries to be delivered.

Watch a video about the project by local artist Heidi Everett at banyule.vic.gov.au/ILCH

For more information, contact Alan Thompson (YPRL) on **9497 5780** or ivayprl@yprl.vic.gov.au

This program is run by Yarra Plenty Regional Library, with support from Banyule Council.



Journey

An exhibition of paintings by Yongqiang Lu

📅 21 January – 13 February

📍 Loft 275

📍 **Opening event: check our website closer to the date**

Lu is a Chinese artist who calls Ivanhoe home. He is fascinated and inspired by the Yarra River and the surrounding land. His paintings reveal decades of skill and experience as well as the joy of exploring a new environment. He employs both Western and Chinese artistic languages to define his journey of this landscape.

Image / Pink in Spring by Yongqiang Lu, oil on canvas



Summer's here! Are you water safe?

Sign up for swimming lessons at banyule.vic.gov.au/IvanhoeAquatic or call 9490 7111

With warmer weather approaching, we're all looking forward to a summer at the beach or around the pool.

But after almost two years of COVID lockdowns and a long time out of the water, it's possible we've lost some fitness and swimming ability. It's important to understand, whether you're an adult or child, we all need to be realistic and wary about our capabilities and confidence levels around water.

Most drownings occur in backyard pools and last summer saw the highest number of drownings in Australia for over 20 years. Worryingly, it's predicted an even greater number of drownings will happen this summer.

To reduce the risk of drowning:

- Never leave a child unsupervised near water – be within arm's reach and have clear sight of your child at all times;
- Watch your child, not your screen!
- Don't swim in conditions that you can't manage;
- Go to a patrolled beach and swim between the flags; and
- Learn CPR (cardio pulmonary resuscitation).



Extensions for pool and spa barrier compliance

Pool and spa safety barriers save lives and that's why new laws require local pool and spa owners to register with us and get their barrier checked every 4 years.

Due to COVID restrictions, the Victorian Government has extended the due date for compliance certificates as per below.

Pool / spa construction date	Compliance certificate must be lodged by
On or before 30 June 1994	1 June 2022
From 1 July 1994 until 30 April 2010	1 June 2023
From 1 May 2010 until 31 October 2020	1 June 2024

Make sure you submit the pool/spa barrier compliance certificate within 7 days of receiving it. Not complying with the 1 June 2022 due date may result in receiving a \$363 infringement.

For more information, visit banyule.vic.gov.au/PoolFence

You can also call us on 9433 7777 or email pool.register@banyule.vic.gov.au



Keep learning with U3A Banyule

University of the Third Age (U3A) fosters lifelong learning for people aged 50+, who are retired or semi-retired.

U3A Banyule's main venue is at Ivanhoe Library and Cultural Hub, although at times it offers talks, courses and activities at other community centres across Banyule.

For the cost of \$45 per year, U3A Banyule members can attend as many courses as they want and choose from a range of offerings, including:

- arts and crafts activities
- language classes
- writing classes and book groups
- exercise, dance and game activities
- current affairs, history and philosophy

There are also public lectures, excursions, lunches and other social events held throughout the year. Plus, many talks and presentations can be viewed online.

Become a member and see what learning you can embrace in 2022!

**Ivanhoe Library and Cultural Hub,
275 Upper Heidelberg Rd, Ivanhoe**

u3abanyule.org.au

info@u3abanyule.org.au

0418 749 228

Proof of vaccination with no smartphone

If you don't have a smartphone and are unsure of how to provide proof of your vaccination status, you can call Services Australia on **1800 653 809** for help.

Ask them to send your **Immunisation History Statement** to you. Please note, it can take up to 14 days to arrive in the post.

Alternatively, you can print your COVID-19 digital vaccination certificate located on the home page of your MyGov account at my.gov.au



This individual has received all required COVID-19 vaccines.

DOCUMENT NUMBER
10000002308

INDIVIDUAL HEALTHCARE IDENTIFIER (IHI)

Ward Rounds



Cr Peter Castaldo
Griffin Ward

peter.castaldo@banyule.vic.gov.au
0466 502 698



We've all had a challenging time during this prolonged pandemic, some of us more than others. I think of all the doctors, nurses and other medical staff in our ward putting in time and effort to fight COVID-19. A big thank you to all of them for their continued efforts in putting the health and safety of others first. We also know that businesses

have been struggling with lockdowns impacting their ability to trade at full capacity or even operate at all. As we open up, it would be great if we put these local businesses front of mind when going out for a meal, making a purchase or thinking of a special gift for the festive period. I wish them and everyone a happy new year.



Cr Alison Champion
Sherbourne Ward

alison.champion@banyule.vic.gov.au
0466 486 593



Isn't it wonderful to see our local shopping strips and malls bustling again? What a relief and a joy to be able to shop locally, chat with shop keepers, and stop for coffee and cake! Some online stores profited during the pandemic lockdowns, but many local traders who rely on foot traffic did it especially tough. They are

the lifeblood of our neighbourhoods and gathering places and it's in our interests to help them get back on their feet. I encourage you to shop locally for everything this festive season while you enjoy time with loved ones, perhaps for the first time in ages. Picture: Me with Lincoln from Monty's Were St Grape and Hop Wine Bar.



Cr Fiona Mitsinikos
Hawdon Ward

fiona.mitsinikos@banyule.vic.gov.au
0434 891 077



It's been pretty tough on kids with restrictions over the last year and a half, and our local parks have never seen so many people using them. We've got some great news for families in Yallambie with a fantastic playground upgrade finished at Arthur Streeton Reserve. Along with the always popular swings, slides and monkey bars,

we had some suggestions from the community to bring in more seating throughout the park, a see-saw, a climbing wall and a twist wall to cater for older children. It's great to see the playground has already become a hit. Next to the playground, we've put in a new outdoor exercise station which has a range of equipment for all to enjoy.



Cr Elizabeth Nealy
Beale Ward

elizabeth.nealy@banyule.vic.gov.au
0435 243 598

During the pandemic we saw many people get a puppy and with Christmas coming up, there's probably a few more people looking to add a four-legged friend to their family. In Beale Ward, we're lucky to have an off-lead exercise park for dogs at Malcom Blair Reserve on Karingal Drive, Greensborough. This park is fully-fenced and has a large

exercise area where dogs can run, play and socialise with one another. It's also got all the amenities, such as park benches, dog waste bins and drinking fountains with attached dog bowls. These areas make training new puppies a lot safer, without the risk of them running off, and let you and them make new friends.



Cr Mark Di Pasquale
Bakewell Ward

mark.dipasquale@banyule.vic.gov.au
0481 002 299

I hope to see you at Carols by Candlelight this year at Greensborough War Memorial Park on Saturday 18 December. If you can't attend, you can livestream the event. More details on p.9. In other news, we welcome the new designs for the North East Link with improvements such as more open space and less tree removal plus a longer tunnel which

starts at Winsor Reserve rather than closer to Lower Plenty Rd. Council had advocated to extend the tunnel to Grimshaw St and we remain committed to ensure this major project minimises disruption to the community. We are still advocating for additional benefits to the area, such as the need to upgrade Watsonia railway station (see p.23).



Cr Alida McKern
Chelsworth Ward

alida.mckern@banyule.vic.gov.au
0435 316 318

Urban densification, growing population, climate change, including increasing urban heat, and the pandemic lockdowns, have heightened our appreciation of urban nature. This includes urban forests, providing us cleaner air and water, shade, neighbourhood amenity, and wildlife habitat. I'm delighted to be chairing the Community Reference Group

of Council's Urban Forest Strategy which includes 12 Banyule community members. Find out more and have your say at shaping.banyule.vic.gov.au/UrbanForest. Pictured with me is group member Rosemary from Ivanhoe, and her beautiful Peppercorn tree which is on Council's Significant Tree Register. To all our residents, I wish you a safe, happy and healthy festive season.



Ward Rounds



Cr Peter Dimarelos
Olympia Ward

peter.dimarelos@banyule.vic.gov.au
0434 891 065



While we wait for Olympic Leisure Centre to reopen after repairs, it's a good time to consider the future of this ageing facility. Council has convened a co-design team with residents and a working group with key partners to reimagine OLC and design its future in line with the needs of the local community.

The area has changed enormously since OLC was built in 1956, as have the interests and leisure pursuits of residents. Council is committed to redeveloping the centre to better serve the 3081 community of today and tomorrow. Tell us what you think that looks like. See the story on p.3 for more information.



Cr Rick Garotti
Grimshaw Ward

rick.garotti@banyule.vic.gov.au
0490 014 965



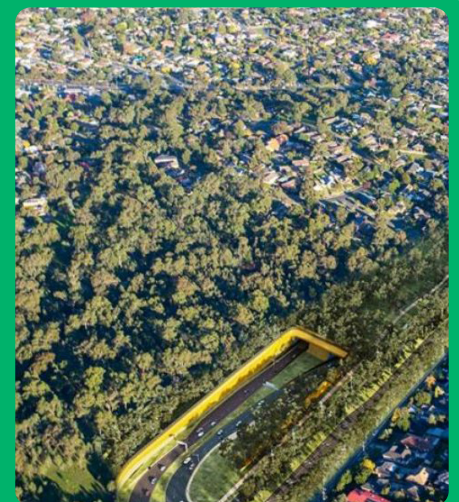
Council has a strong commitment to create local jobs and pathways to employment, especially for local people facing barriers to finding meaningful work. We have a Social Enterprise Strategy and Action Plan 2020-2025, which is the first of its kind for the local government sector and demonstrates to other councils the driving role councils can play in

supporting the growth and sustainability of social enterprise. These initiatives improve the employment opportunities and livelihood of participants and the economic prosperity for the community. See pages 6-7 for more, including a new social enterprise café coming to our new Bellfield Community Hub next year.



Cr Tom Melican
Ibbott Ward

tom.melican@banyule.vic.gov.au
0413 043 015



We welcome the Victorian Government's latest plans for the North East Link, which include a major rethink of the interchange at Lower Plenty Rd. The new design for a simpler, streamlined interchange is more in line with what Council advocated for and will mean reduced environmental impact, retaining more trees, and minimise the impact on Banyule creek and increase

parkland. The extended tunnel is a step in the right direction, but Council had advocated for a further extension so that it ends closer to Grimshaw St and not impact Winsor Reserve and surrounding streets. We will also be pushing for an upgrade of Watsonia railway station next to the planned multi-storey carpark. For more information, see p.23.

Banyule welcomes improvements to North East Link plans

New designs for the North East Link (NEL) released by the Victorian Government on 28 October have been welcomed by Council.

Banyule Mayor Cr Elizabeth Nealy said the longer tunnel and a simplified Lower Plenty Road interchange were really positive improvements to the design.

“We’ve advocated with our community for many years to push for changes that lessen the project’s impact on local communities and the environment,” Cr Nealy said.

“And this commitment remains as the project moves forward and more details are released.”

The new plans accept Council’s advocacy on several aspects of the multi-billion-dollar project, including the extension of the underground tunnel section to Watsonia.

Other positive outcomes for Banyule include simplification of the underground interchange at Lower Plenty Rd, a tree-lined boulevard along Greensborough Rd, and new parklands and nature reserves in Yallambie and along Banyule Creek.

The longer tunnel, increased by 1.9km to 6.5km, will mean less traffic noise when the link opens, expected to be in 2027/28. Extended use of tunnel boring machines, replacing some ‘cut and cover’ sections, will also reduce noise during construction.



Simplified works around the tunnel entrance at Lower Plenty Road in Yallambie are likely to impact less on significant vegetation and habitat at Simpson Army Barracks, another issue for which Council fought.

Banyule joined with neighbouring councils Whitehorse, Boroondara and Manningham to engage expert consultants and coordinate appearances before the NEL panel hearings in 2019, and afterwards, direct to the consortia bidding for the project.

Council will continue to advocate for items that have not yet been included or are yet to be considered as secondary plans are completed over the next 12 months.

A report to be considered at Council’s meeting on 6 December will look at how the NEL project announcement, along with other Victorian Government transport projects such as the Hurstbridge railway line duplication Stage 2 and Fitzsimons Lane upgrade, compare with Council’s adopted Transport Advocacy Project List.

To see the plans, visit bigbuild.vic.gov.au or the North East Link Watsonia Hub at 17 Watsonia Rd, 10am-5pm, Monday to Friday.

Have a sustainable festival period

1. Buy good quality decorations that last or make your own by reusing materials.
2. Give environmentally-friendly gifts or experiences like a special event or outing.
3. Use recycled paper wrapping and keep it to reuse or recycle afterwards.
4. Plan your menu to prevent food wastage and compost any leftovers.
5. If you’re giving a battery operated gift, give a battery recharger too.
6. Recycle unwanted electronics. Find out how at RecyclingNearYou.com.au
7. Consider a re-usable Christmas tree, made from textiles and wood, or a mural.



Don't bin batteries!

Recycle them for free at our Waste Recovery Centre or various supermarkets.

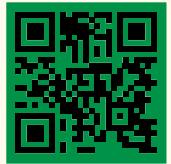
REDISCOVER LOCAL.

SUPPORT THE BUSINESSES THAT SUPPORT YOUR COMMUNITY.

There's never been a better time to rediscover
what's great in your local community.

Visit RediscoverLocal.com.au and search our online directory for a business near you.

Get social
with us on
Facebook



Instagram



Contact Us

All enquiries

PO Box 94, Greensborough, VIC 3088
Phone 9490 4222
enquiries@banyule.vic.gov.au
banyule.vic.gov.au

Council Service Centres

Greensborough 1 Flintoff St
Ivanhoe 275 Upper Heidelberg Rd
Rosanna 72 Turnham Ave (currently closed)
COVID-19 restrictions may impact operations so please check our website for up-to-date information. Our customer service staff can also assist you over the phone.

Hearing or speech impaired

Call us through the National Relay Service on 133 677 (TTY) or 1300 555 727 (ordinary handset) and contact 9490 4222.

Interpreter service

إذا كنتم بحاجة إلى مترجم يرجى الاتصال بالخط القومي للترجمة الهاتفية على الرقم 131 450 وطلب إيصالكم ببلدية بانايول على الرقم 9490 4222.

如果你需要一名翻译, 请打电话到国家电话翻译服务处 (TIS National) 131 450, 再转接到 Banyule 市政府 9490 4222

若你需要口譯員, 請致電 131 450 聯絡 TIS National, 要求他們為你致電 9490 4222 接通 Banyule 市政廳。

Ako vam je potreban tumač, molimo vas, nazovite TIS National na broj 131 450 i zatražite da vas se spoji sa Vijećim općine Banyule na broj 9490 4222.

Se hai bisogno di un interprete chiama TIS National al numero 131 450 e chiedi di essere messo in comunicazione con il Comune di Bayule al numero 9490 4222.

Αν χρειάζεστε διερμηνέα τηλεφωνήστε στην Εθνική Υπηρεσία Διερμηνέων Μεταφραστών στον αριθμό 131 450 και ζητήστε να σας συνδέσουν με τη Δημαρχία Banyule στο 9490 4222.

Ако ви треба преведувач ве молиме јавете се на TIS NATIONAL на 131 450 и замовете да ве поврзат со Banyule Council на 9490 4222.

Haddii aad u baahan tahay mutarjum wac khadka qaranka oo ah TIS 131 450 weydiina in lagugu xiro Degmada Banyule tel: 9490 4222.

Nếu cần thông dịch, xin gọi cho TIS Toàn Quốc qua số 131 450 rồi nhờ họ gọi cho Hội Đồng Thành Phố Banyule theo số 9490 4222 giúp quý vị.