

Banyule Banner

03 Shaping Banyule

06 FOGO is coming

20 Ward Rounds

April/May 2022



Mayor's Message

Mayor
Cr Elizabeth Nealy



We have been busy planning and budgeting to keep us on a path to a more sustainable future, both economically and environmentally. And with the world of waste and recycling changing, we need to adapt our models.

Integrated planning

Each year, Council undertakes extensive planning to ensure we are delivering what the community needs. This helps inform our key strategic documents which work together to improve Banyule. We now invite you to share your thoughts on our proposed Budget, Council Plan, Rating and Revenue Plan, and 10-year Financial and Asset plans. See p.3 for more about how you can contribute as we finalise these documents.

Addressing the rising cost of waste

Banyule's vision is for a community striving to achieve zero waste to landfill by 2030. At the same time, the Victorian Government is implementing changes to household recycling and councils will need to provide a waste service for four bins, including a new bin for glass. While this promotes better recycling and the reuse of products, providing four separate waste services increases Council costs well above what we can recover through rates. This is compounded by the Victorian Government's increase to the landfill levy, which will leave Council with an estimated shortfall of \$9 million over 10 years. From 1 July 2022, we are proposing to separate out the cost of providing waste and recycling services into two new waste

rates. These will appear as individual items on rates notices. To offset the introduction of waste rates, the overall general rates collected across the municipality will be reduced. Individual ratepayers will be impacted differently depending on what waste services they receive. For the average ratepayer, this represents an extra \$0.50 per week for 2022/2023. While this has been a difficult decision, without action we would need to look at other ways to address this significant financial shortfall, such as unwanted cuts to essential community services or infrastructure.

FOGO coming soon


A big part of our drive towards zero waste is the introduction of FOGO – a food organics and garden organics bin. From 4 July, we will pick up your red-lid rubbish bin every two weeks, and your green-lid bin will become your FOGO bin and will be picked up once a week. Before this happens, you will receive a larger red-lid rubbish bin and a kitchen caddy to put food scraps in. We know this is a bit of a change for some people, but one which won't take long to get used to. What's great is that instead of going to landfill, all your FOGO waste will be made into compost to be used on farms and gardens. See pp.6-7 for more information.

Stay in touch with us digitally

 Email newsletters
banyule.vic.gov.au/subscribe

  
[@BanyuleCouncil](https://www.facebook.com/BanyuleCouncil)


Have your say on important projects and local initiatives

 shaping.banyule.vic.gov.au

Council Meetings

 **Upcoming dates:**
9 May, 30 May, 27 June

 **From 7pm**

 **For location and up-to-date COVID restrictions, please check our website.**

For agendas, minutes, public question time and request to speak forms, visit banyule.vic.gov.au/CouncilMeetings

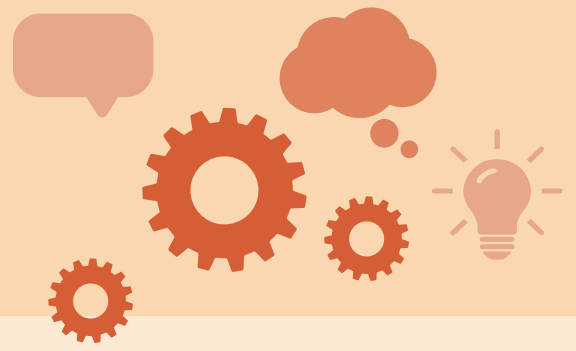
Banyule City Council is proud to acknowledge the Wurundjeri Woi-wurrung people as Traditional Custodians of the land and we pay respect to all Aboriginal and Torres Strait Islander Elders, past, present and emerging, who have resided in the area and have been an integral part of the region's history.

Our community is made up of diverse cultures, beliefs, abilities, bodies, sexualities, ages and genders. Council is committed to access, equity, participation and rights for everyone; principles which empower, foster harmony and increase the wellbeing of an inclusive community.

COVER: Get set for FOGO – the new food and garden waste service coming to Banyule. See pp.6-7 for more.

Shaping Banyule

Get involved in local projects



Planning together

Council's planning documents affect everyone in Banyule every day.

From the quality of our footpaths, to the maintenance of our buildings, the community services we deliver and the fees at our swimming pools and childcare centres – we are all affected.

This is why we're seeking your support to finalise our Budget 2022-2026 and Revenue and Rating Plan, actions for year 2 of the Council Plan, and setting the foundations for our 10-year Asset and Financial plans. As community members, you have insight that can strengthen these documents and guide the work of Council over future years.

From now until 3 May, you can tell us your thoughts through an interactive online survey. On the survey page you'll find some short animations describing the key documents and how they support us to deliver good outcomes for Banyule, followed by some questions.



Participate in our survey at shaping.banyule.vic.gov.au/BCPlans or scan the code. You can then enter a draw for your chance to win one of 10 local shopping gift cards valued at \$100.



Strategic plans aligned

Our Council Plan 2021-2025 is Council's key strategic document and outlines our priorities and focus until 2025.

This Plan aligns with Banyule's Community Vision and demonstrates how we will strive towards that vision, focus our efforts and measure our progress.

While the Plan includes yearly action plans, it looks beyond this so we can meet the challenges and maximise the opportunities to thrive in the long term.

Importantly, the Council Plan works together with our yearly Budget and 10-year Asset and Financial plans to ensure we are planning strategically and investing astutely. This integrated approach ensures we continue to provide high-quality community facilities, services and programs today and for future generations to come.



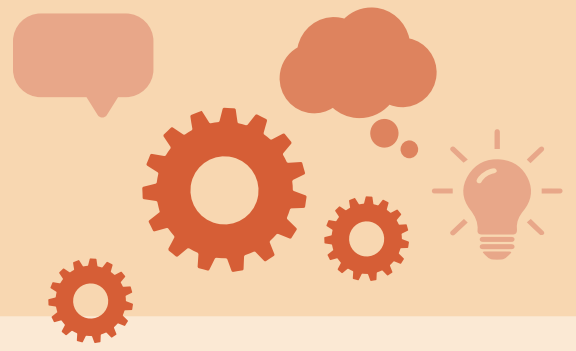
Council Plan quarterly reports now available

Want to see how we're tacking on our objectives and actions in the Council Plan? Go to banyule.vic.gov.au/QuarterlyReport or scan the code.



Shaping Banyule

Get involved in local projects



Urban Forest Strategy continues to grow

The framework for Banyule's Urban Forest Strategy is now in place, following community consultation that identified five main themes:

1. We believe the urban forest is an essential asset for Banyule, shared by all and crucial for the health and wellbeing of the community and natural environment.
2. We believe a healthy urban forest is the result of strong partnerships between Council and the community.
3. We act today to respond to the changing climate and to leave a positive legacy for the future community, and we act responsibly, using evidence-based practice in our leadership and management of the urban forest.
4. We plan, design and deliver for the people, places and natural environments of Banyule including:
 - Climate change and reduction of urban heat island
 - Liveability, amenity and neighbourhood character
 - Banyule's ecosystems and biodiversity



5. We protect and enhance Banyule's natural environment to care for flora and fauna.

Using this framework, the next stage is to develop the actions and evaluation criteria that will guide us in managing this key community asset.

Get involved at shaping.banyule.vic.gov.au/UrbanForest or scan the code.



Inclusion benefits everyone

We're drafting a new plan, Inclusive Banyule, to ensure our services, culture and community are fair, equal and inclusive.

Diversity brings richness to Banyule's neighbourhoods and communities. And we are committed to inclusive practices, addressing inequities and creating environments where everyone belongs.

When we do this, everyone benefits.

Over the coming months, we look forward to hearing from you about Inclusive Banyule and the actions we need to benefit our community.

“ We in Banyule are a thriving, sustainable, inclusive and connected community. We are engaged, we belong, and we value and protect our environment. ”

- Banyule Community Vision 2041

Visit shaping.banyule.vic.gov.au/InclusiveBanyule or scan the code to find out more or follow the project.





Heidelberg Park Masterplan – Have your say

Last year, we undertook community consultation on Heidelberg Park and asked for your ideas on how to improve it.

Common themes emerged, such as providing new facilities and opportunities for recreation, connection and environmental improvements. We also heard people wanted to celebrate our Indigenous and European heritage and protect the site from over-development. We've now developed a draft master plan for Heidelberg Park incorporating your feedback.

Have your say and complete the online survey at shaping.banyule.vic.gov.au/HeidelbergPark or scan the code.



New plans for Rosanna Library

Updated plans for Rosanna Library reflect community feedback on the initial concept drawings. A common theme that emerged was a desire to keep more established trees and have more open space around the new library.

The new library will still be double the size of the existing library, however, this will be spread over three storeys, creating a smaller footprint and more open space outside. A roof-top garden adds to the greenery of the site.

Council has now received a development application for the site, which is being developed in conjunction with Woolworths.

View the plans at shaping.banyule.vic.gov.au/RosannaLibrary or scan the code.



Bike strategy rolls on

We have recently adopted our Banyule Bicycle Strategy and Action Plan 2022-2027, guiding our commitment to increase the uptake of cycling in Banyule, which was part of our Community Vision 2041 for a Well-Built City.

The strategy aims to ensure cyclists have access to a safe, convenient and accessible network that connects them to other transport modes and key destinations.



View the strategy and action plan at shaping.banyule.vic.gov.au/bicycle or scan the code.



FOGO is coming to Banyule

FOGO = Food Organics and Garden Organics

It's a new waste service being introduced in Banyule. From 4 July, we'll begin collecting your food and garden waste every week.

Here's what the new service will mean for you:

- Your existing garden waste bin (GREEN lid) will become your FOGO bin from 4 July.
- Each household will receive a new, larger bin for rubbish going to landfill (RED lid). These will be delivered between March and June. We'll also collect your old, smaller rubbish bin and recycle it. (Find out when your bin will be delivered at banyule.vic.gov.au/FOGO)
- In June, each household will receive a kitchen caddy for collecting kitchen food waste. It will come with FOGO instructions and a calendar showing your new bin collection days.
- From 4 July, rubbish going to landfill (RED lid) will be collected fortnightly.
- Your existing recycling bin (YELLOW lid) will remain the same. From 4 July it will be collected fortnightly.
- RED rubbish bins will be collected one week, then YELLOW recycling bins will be collected the next week. Your FOGO bin will be collected every week.



Why are we introducing FOGO?

More than 40% of Banyule's household rubbish collection is food that ends up in landfill.

What happens to your FOGO?

It is made into high-grade compost for use in agriculture and gardens.



What CAN go in the FOGO (Green lid) bin?

If you can eat it or it grows, into the FOGO bin it goes!



Garden waste

- Cuttings, weeds, grass clippings



Food waste

- Scraps and leftovers, including meat, bones, fruits, vegetables, dairy, bread, rice and pasta.

What can NOT go in the FOGO (Green lid) bin?



Non-organic garden material

- Concrete, soil, plastic pots, sticks thicker than 100mm diameter, branches more than 700mm in length



Bin liners

- Plastic packaging (even those labelled as compostable, biodegradable or recyclable)



Want to know more?

Visit banyule.vic.gov.au/FOGO or scan the code.

You can also call us on **9490 4222** or email enquiries@banyule.vic.gov.au



Building a better Banyule



Bellfield Community Hub under construction 1 April 2022.

Bellfield Community Hub set to open

Our new Bellfield Community Hub brings together a range of community services in an integrated Hub, designed for inclusivity and accessibility.

The environmentally-sustainable building will be home to maternal and child health services, a kindergarten, adult education spaces and community meeting rooms. There is also a café run by For Change Co., a social enterprise employing young people at-risk of or experiencing homelessness. The Hub opens up to a new community garden and is right next door to an urban farm.

Please visit banyule.vic.gov.au/BellfieldCommunityHub for details of when the hub will be open and operating times for services.

Bellfield Community Hub
15 Daphne Crescent, Bellfield
banyule.vic.gov.au/BellfieldCommunityHub
9490 4222



(L-R): Wurundjeri Elder Bill Nicholson, Cr Peter Dimarelos, Launch Housing General Manager Housing Supply Jack Panton, Cr Alida McKern, Cr Fiona Mitsinikos, MP Anthony Carbines, Mayor Cr Elizabeth Nealy, and Deputy Mayor Cr Alison Champion.

Groundbreaking social housing

In March, we saw an exciting milestone for our Bellfield Project with the start of the new social housing project.

Launch Housing will deliver up to 58 residences, providing secure and affordable housing thanks to a 50-year lease with Council and \$18.5m of Victorian Government funding.

The building is expected to be completed by mid-2023.

“ The Bellfield Community Hub is about delivering services, and creating connections and jobs in this vibrant, diverse community. ”

Banyule Mayor
Cr Elizabeth Nealy



Artist impression of upgrade to Were Street Reserve.

Monty Village improvements

Work has started on an exciting upgrade of Were Street, Montmorency, adding new facilities and making the shopping village more attractive, safer and accessible.

The improvements funded by Banyule Council and the Victorian Government include new porous paving – to improve tree health – and levelled footpaths for accessibility. There will be more area for outdoor dining and sitting, raised pedestrian crossings, more accessible car parks, new gardens and an extra pedestrian crossing.

Were Street Reserve is also being redeveloped to include a new accessible toilet block and new gardens, lawns and paths, as well as a performance stage and nature play area for children. All mature trees throughout Were Street and the reserve will be retained.

We're delivering the project in localised stages to minimise disruptions. Businesses will remain open, with pedestrian access to the shopfronts and parking available, so keep supporting them.

Works are scheduled to be completed by the end of the year.

See the plans at **shaping.banyule.vic.gov.au/WereStreet** or scan the code.



Pavilion makeover for Yulong Reserve

We've completed the upgrade and expansion of the pavilion at Bundoora's Yulong Reserve.

The main users of this sports ground, Bundoora Football Netball Club and Bundoora Cricket Club, now have fully refurbished and upgraded changerooms for use by males and females, new umpire facilities, new away changerooms and a new storeroom and meeting space. We've also relocated the scoreboard.

Growing stronger at Barrbunin Beek

By Charles Pakana

Tucked away near the Darebin Creek, amidst various playing fields on the outskirts of Banyule, there is a small building that is home to a community of proud Aboriginal and Torres Strait Islander People.

Known as Barrbunin Beek Aboriginal Gathering Place, it is, like so many other community hubs, emerging from a two-year forced hibernation resulting from COVID-19.

Palawa (Tasmanian) man Blair Colwell (pictured) is instrumental in delivering Council's commitment to a Gathering Place for the community. Blair joined Banyule Council in November 2021, taking on the role of Barrbunin Beek Coordinator at a time when community was still feeling the impacts of COVID-19 lockdowns.

"There is a definite challenge in re-establishing a cohesive community," Blair said. "Many of our People are still concerned - quite rightly - about the virus and its impact, especially when it comes to our Elders."

Despite the challenges, Blair works with Council's First Nations Elder Uncle, Les Chessells, community members, the Barrbunin Beek committee, other Council staff and service providers to build an inclusive and dynamic community centre.

“ I want Aboriginal people to come in and really feel like they belong. ”

Blair Colwell

"I also want non-Aboriginal people to feel welcome but understand that this is predominantly an Aboriginal place."

As he looks to the future, Blair recognises the importance of building relationships with other



local Aboriginal organisations, including *Dardi Munwurro* and MAYSAR (Melbourne Aboriginal Youth Sport and Recreation), local community health services and neighbourhood houses.

"As we build relationships across the community with other organisations, we build a community that leverages off each others' strengths," Blair said.

Already, a large number of programs are either in development or underway. These include: creation of a community possum skin cloak; Women's Business gatherings; Men's Business yarning circles; and in partnership with MAYSAR, a Youth Cultural Group.

"The future ability to run those and so many other programs is due in no small part to Council's success in obtaining funds for the renovation of the Gathering Place," Blair said.

"We have an incredibly diverse and increasingly strong Aboriginal and Torres Strait Islander community right across Banyule.

"For many of them, Barrbunin Beek is their primary connection to community and culture."

For more information on Barrbunin Beek, contact Blair Colwell on **0481 141 422** or barrbunin.beek@banyule.vic.gov.au or check out the Barrbunin Beek Facebook page for upcoming events.

National Reconciliation Week events

27 May-3 June #NRW2022

National Reconciliation Week is a time for all Australians to learn about our shared histories, cultures, and achievements, and to explore how each of us can contribute to achieving reconciliation in Australia. Please visit banyule.vic.gov.au/ReconciliationWeek for a list of community events – available from 3 May 2022.



Banyule Council wishes all Muslims Ramadan Mubarak

Ramadan is a special time for the Muslim community. It is a time for reflection, prayer and renewal of faith.

Elsedeaq Heidelberg Mosque

32 Elliott St, Heidelberg Heights

For more information, visit [facebook.com/Elsedeaq](https://www.facebook.com/Elsedeaq) or email a.elzokm@hotmail.com



“ The Heidelberg Mosque will be opening its doors to our non-Muslim brothers and sisters in Banyule to learn about the virtues of fasting the month of Ramadan as well as sharing an Iftar dinner. ”

Imam Alaa Elzokm

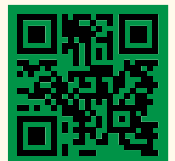
REDISCOVER
LOCAL!

**SUPPORT THE BUSINESSES
THAT SUPPORT YOUR COMMUNITY.**

There's never been a better time to rediscover what's great in your local community.

Visit RediscoverLocal.com.au and search our online directory for a business near you.

Get social with us on Facebook



Instagram



Driving young people from L to P

The L2P program supports young people aged 16-21 years who have no access to a vehicle or a supervising driver, helping them to learn to drive in a safe and lawful manner.



Volunteer mentor Brian joined the program in 2020 and completed the necessary recruitment process and training by February 2021. A learner driver is only matched to a volunteer when they have been deemed safe and competent by the program's professional driving instructors.

After teaming up with local learner driver Rachel, Brian provided a diverse range of driving experiences at night and in different weather to build her confidence. After enjoying his time with his first mentee, Brian is now driving with another learner driver, who is the third in her family to be part of the Banyule L2P Program.

If you would like to help young people get their licence

Contact the L2P Coordinator on **0430 038 450** or find out more at **bnllen.org.au**

Public Notice

Parking Infringements Refund Scheme

A refund scheme for parking infringements has been established in line with recommendations from the Ombudsman and the Department of Justice and Community Safety.

From 1 April 2022, infringement costs will be reimbursed to people who apply to have their case reviewed and:

- who appealed a parking infringement between 4 January 2017 and 6 March 2019;
- were unsuccessful in their appeal;
- whose parking infringement was not directly assessed by one of Council's authorised officers; and
- who paid Council the infringement and other costs in full.

To request a review of your case, visit **banyule.vic.gov.au/PIRS** to fill in a simple form.

Recommendations were handed down to several councils, including Banyule, who were using an external contractor to assess, withdraw and withhold decisions.

All of the Ombudsman's recommendations have been addressed by Banyule Council.

We're mowing. Stay clear and safe!

People are putting themselves and their pets at risk by using parks and ovals while mowing is happening.

Dogs chasing our machinery and children playing nearby is dangerous enough, but it's not the only stress for our mowing team. To keep our parks and ovals in tip-top condition, we use large mowers with powerful blades that can pick up a hidden stone or piece of rubbish and make it into a dangerous projectile that could seriously injure a human or pet within a wide range.

The last thing our team wants is to frighten or injure you or your pet. Our mowers put out warning signs before they start work; please comply by staying well clear of that park or oval until the mowers have finished their job.

To reduce the chance of dangerous projectiles being caught in the mower, remember to take everything home with you after enjoying time in our beautiful parks and sport grounds.

Thanks from our tractor drivers who keep our grass looking trim and terrific!



Pet registrations



Do you have a dog or cat?

They must be microchipped and registered with us if they are over 3 months old.

Registrations expire on 9 April each year and you may receive an infringement if you do not register your pet.

Have you moved? Keep your details up to date so if your loved one gets lost, we can help reunite you.

To register or renew your pet registration

Visit banyule.vic.gov.au/PetRego or call us on 9490 4222.

Registering your child for kinder

It's not too late to register for 3 and 4-year-old kindergarten next year.

As every child is different and they can't repeat 3-year-old kindergarten, we encourage you to carefully consider the year your child starts 3-year-old kindergarten, as this may have an impact on when they can start primary school.

When to start 3-year-old kinder

Children are eligible to attend 3-year-old kindergarten if they turn 3 by 30 April in the year of attendance. Your child must have already turned 3 to start kindergarten. More information is available on our website when you register.

Allocations and offers for next year

Places for 2023 kindergarten will be sent out to parents and carers from mid-July onwards via our kindergarten portal. If your child is offered a position or is on a waiting list, you'll receive either an SMS or email notification to sign in and check the portal.

There are three rounds of kindergarten allocations and offers will be made as positions become available, until all vacancies are filled.

For more information and to register for kindergarten, visit banyule.vic.gov.au/kindergartens



Did you know?

This year, the Victorian Government started funding 3-year-old kindergarten for 5 hours a week. This will increase to 15 hours by 2029.

Rates notice the easy way

Register to receive your rates notice by email or BPAY View.

- Save paper, time and fuel by reducing the number of notices going out by post
- Help Council save so we can spend more on community infrastructure and facilities
- Receive your email notice wherever you are in the world
- Joint owners can all receive a rates notice

Scan the code to register for email notices or go to banyule.vic.gov.au/About-us/Rates



Register for BPayView at bpay.com.au/bpay-for-you#receive-bills

Workshops for community groups

Are you interested in developing your skills and building the capacity of your community group? Join one of our free upskilling workshops to support community volunteers.

Collaborating for collective impact with non-profit training

Collaboration happens when people come together and contribute their expertise towards a shared goal or mission. How well a group collaborates greatly impacts the outcome of the project. Good collaboration increases the knowledge and effectiveness of a group, making it easier to achieve common goals.

This workshop looks at how collective impact can be used to secure funding and other supports. Topics include:

- Understanding the conditions for collective impact
- Developing evidence of the benefit of collective impact
- Knowing how to establish a partnership with others to achieve collective impact
- Selling the collaboration to funders

6pm-8pm, Wednesday 25 May
Online workshop via Zoom



Book your spot at
trybooking.com/BWUCD
or scan the code.



Sign up to the Banyule Banner e-newsletter

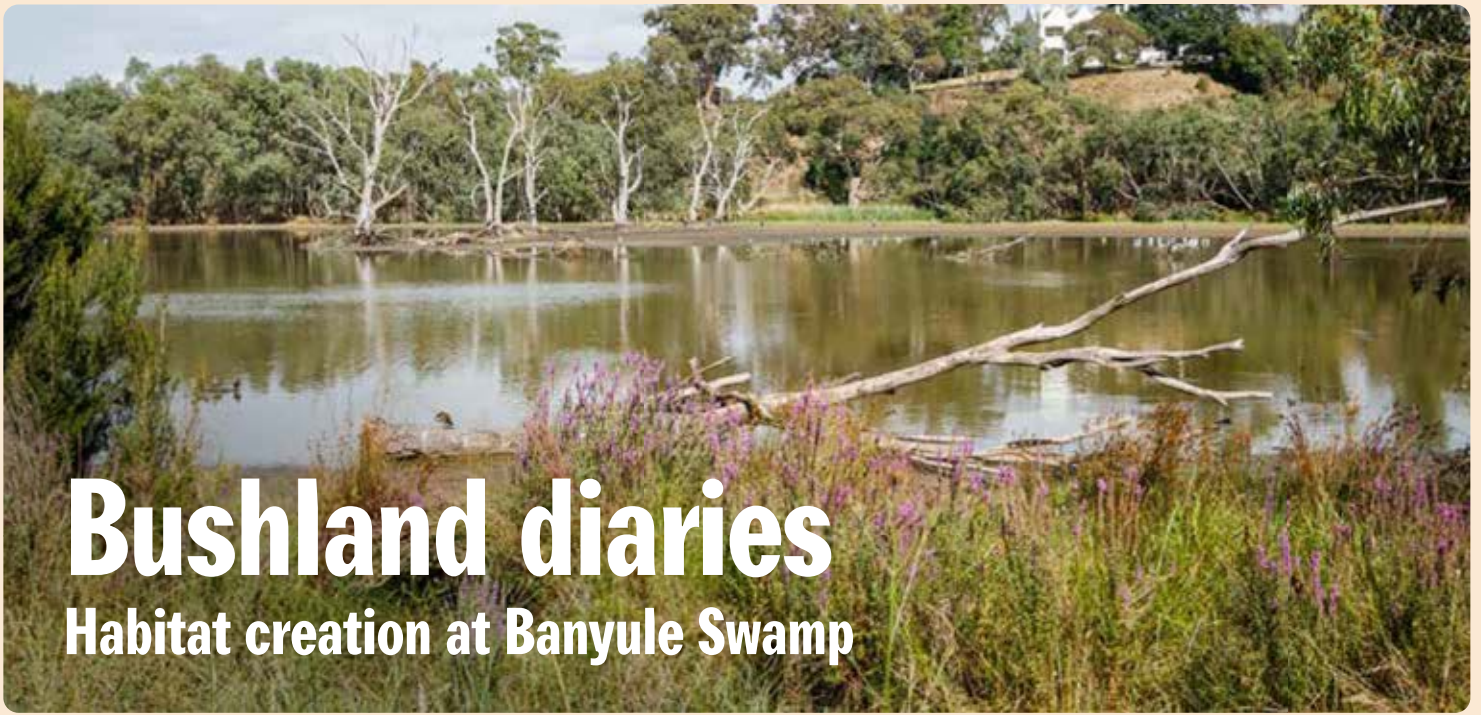
Get more local stories and up-to-date information straight to your inbox.

Our new monthly Banyule Banner e-newsletter includes extra news, features and videos you won't want to miss.

Hear from our mayor about important Council decisions. Discover new places to visit and activities to do. Meet the locals who make Banyule special and share your ideas on projects. Plus, stay informed with all the latest news and updates.

Scan the code or go to
banyule.vic.gov.au/subscribe
to subscribe today.





Bushland diaries

Habitat creation at Banyule Swamp

Banyule Swamp is on a floodplain of the Yarra River at Banyule Flats Reserve in Viewbank. The Swamp is 2.61 hectares of open water with a 630-metre perimeter of tea trees, river red gums, indigenous sedges, rushes, herbs and grasses, and exotic vegetation species.

It is filled by storm water runoff collected at the northern end of the meadow area called the “silt pond”. There are five old trees registered on Banyule’s Significant Tree Register due to their diverse habitat values. Two old fence lines running north-south through the swamp were our target areas for creating new habitat log piles.

Regular visitors to Banyule Swamp will have noticed the addition of piles of logs and branches in the swamp and two new nest boxes on the old western fence line posts. Our Bushland Management and Environmental Operations teams, with members of the Warringal Conservation Society and avid bird watchers, worked together to carry branches through the mud and water and stack them throughout the swamp (pictured). This creates perches and nesting areas away from the edge of the swamp and predators, such as foxes, dogs and cats, and provides safer places for birds to rear their young.

Many birds dislike open water as it provides no shelter or protection, and no safe perching places. By adding habitat logs and nest boxes and by planting indigenous aquatic vegetation we hope to increase the bird population and the diversity of bird species in the swamp.



The branches also provide places for eastern long-necked turtles to bask and forage for food and the new habitat provides shelter and breeding areas for fish, frogs and aquatic invertebrates such as snails and crustaceans. Insects that require aquatic areas to complete their lifecycles - dragonflies, for example - also benefit.

In addition to the log piles, we’ve installed 10 nest boxes around the swamp: four Krefft’s glider boxes on the western side and four Krefft’s Glider boxes and two for ringtail possums on the south-east. The boxes provide an artificial hollow for native wildlife to live in as there is a lack of naturally occurring tree hollows in Banyule Flats. Although the nest boxes have been designed to house the species mentioned, other species will use the boxes opportunistically. We will monitor the new boxes and those in the Back Paddocks restoration area.

Providing habitat at different niche levels is important to ensure enhancement of ecosystem diversity. Many species require different habitat components throughout their life cycle. By expanding the habitat available at Banyule Flats we are giving resident and migratory wildlife the best chance to survive and continue to increase the population.



Become a friend of Andrew Yandell Habitat Reserve

Join our park rangers and the Friends of Andrew Yandell Habitat Reserve to help conserve this home of the Eltham copper butterfly. We'll be working on woody tree removal.

For more information, email Banyule Senior Ranger Kylie D'Amico at kylie.damico@banyule.vic.gov.au

Sunday 22 May, 10am-12pm

Andrew Yandell Habitat Reserve, St Helena Rd, Greensborough

Meet at the bottom of the stairs on St Helena Rd.

Scan the code to learn more about the reserve



Become a citizen scientist

Banyule is fortunate to be home to many amazing natural spaces and significant wildlife.

We have three main wildlife corridors and more than 30 conservation reserves that support the creatures great and small who rely on our natural spaces.

Our rangers want your help to learn about the numbers and diversity of local wildlife in our area. You'll be adding to Banyule's Biodiversity Monitoring Program and helping us plan to protect our precious habitat and wildlife.

It's as simple as downloading the iNaturalist citizen scientist app and clicking on your smart phone or tablet when you are out enjoying our natural spaces, or you can make a note and enter it on your computer when you get home.

Find out more at inaturalist.ala.org.au or download the app to your smart

phone or tablet. There are tutorials in the 'help' section on the website to get you started and general tips on how to use iNaturalist.

City Nature Challenge

A great way to start using iNaturalist is to help Banyule win the 2022 City Nature Challenge.

Municipalities across Melbourne are taking part in this international challenge to record urban biodiversity. Observations must be made between 29 April and 2 May and we want to beat the other 20 councils in Melbourne by recording the highest number of wildlife observations!

You'll find 'City Nature Challenge 2022: Banyule' under the Projects tab in iNaturalist.

During the Challenge Banyule will host fun events designed to introduce people to iNaturalist and connect you with nature.

Scan the code for details or search 'Environment sustainability' on our website



National Volunteer Week 16-22 May

Better Together



National Volunteer Week is a chance for all of us to celebrate and recognise the vital work of volunteers in our community and to say thank you to everyone who puts up their hand to make our community a better place to live, work and play.

The theme for National Volunteer Week 2022 acknowledges that together, through volunteering, we are changing communities for the better. We are, Better Together.

This year we stop to reflect on the important role volunteers have played during the past two years of the pandemic.

While most sports and recreation activities were put on hold, volunteers continued to support community groups behind the scenes to ensure they would be in a good position to restart when the opportunity arose. It's great to see kids and adults back enjoying community activities.

Demand for emergency relief services has grown enormously and volunteers have taken on a whole new range of duties including COVID marshalling, extra cleaning and customers with more complex needs, all while wearing face masks and adjusting to changing Health Department directives on lockdowns, social distancing, density limits and travel restrictions. Volunteers have coped with these arduous demands with grace and good will and have provided great support to people in need.



Banyule National Volunteer Week Celebration

We want to say a huge thank you to all volunteers; your efforts supporting our community each and every day contribute to making Banyule a great place to be.

We invite volunteers working in Banyule to enjoy a three-course meal and entertainment at our special event.

📅 Wednesday 18 May

🕒 6pm-10pm

📍 The Great Hall, The Centre Ivanhoe, 275 Upper Heidelberg Rd, Ivanhoe

🎫 Tickets \$10

Bookings essential at trybooking.com/BYHEE or scan the code.





Community Energy Service

Here to answer your questions on all things energy.

Free drop-in sessions

Drop in from 8.30am-5pm and meet Banyule's Community Energy Officer for free advice on energy savings for your home or business:

- First Monday of the month – Ivanhoe Library and Cultural Hub, 275 Upper Heidelberg Rd, Ivanhoe
- Second Monday of the month – Shop 48, The Mall, Heidelberg West

The Community Energy Service provides one-on-one advice on reducing energy use and costs, installing solar and energy efficient home upgrades. Topics we can help with include:

- Getting a better deal on your energy bills
- Concessions and how to access assistance in times of financial difficulty
- Advice on home energy efficiency upgrades, bulk buys and grants
- Information on solar energy and Council's Solar Savers program.

The Community Energy Officer is available other days by appointment at Council's Greensborough Office at 1 Flintoff St. Get in touch at Energy.Info@banyule.vic.gov.au or phone **9242 3451**.

Scan the code for session times



Solar Savers

A solar power system is one of the best energy upgrades you can make in the home.

A 6.6kW system typically pays for itself in five years and provides substantial environmental benefits.

Banyule is a member of Solar Savers, a bulk-buy program to support you through the installation of a solar energy system and reduce the risk and complexity of choosing a provider. Solar Savers provides a good price for a premium system and ensures high standards of workmanship and customer service.

Find out more from Banyule's Community Energy Officer, phone **9242 3451** or email Energy.Info@banyule.vic.gov.au or attend a Monday drop-in session – see article at left.

Scan this code for more information



Ward Rounds



Cr Peter Castaldo
Griffin Ward

peter.castaldo@banyule.vic.gov.au
0466 502 698

Council has endorsed the Victorian Government's Yarra Strategic Plan (Burndap Birrarung burndap umarkoo). The Yarra River, called Birrarung by the Wurundjeri Woi-wurrung, Traditional Custodians of the river valley and surrounding lands, is a vital cultural and environmental asset for all Victorians and we are lucky enough to have a large

portion of the river and its catchment area in our municipal boundaries. Council has a duty to implement parts of the Yarra Strategic Plan, which is also in line with our Council Plan strategy to "Minimise stormwater pollution and the impacts of flooding and maximise Council's water conservation to transition to a water sensitive City".



Cr Alison Champion
Sherbourne Ward

alison.champion@banyule.vic.gov.au
0466 486 593

It's great to see improved car and pedestrian access around Montmorency South Primary School, with the completion of the latest capital works. Responding to changes in traffic and demographics as the school has grown has been a long-term project for Council. The new footpath on Buena Vista Dve, extra parking and footpath renovations

on Reichelt Ave, and the pedestrian crossing beyond McCarthy Gve roundabout have now been completed. New landscaping has softened the parking area and shade will be created as the trees grow. Thanks to residents and the school community for their patience during works and for consulting with us over the last 12 years to get it right.



Cr Fiona Mitsinikos
Hawdon Ward

fiona.mitsinikos@banyule.vic.gov.au
0434 891 077

In Hawdon we are lucky to have several small shopping strips – the kind of neighbourhood shops where everyone knows your name and remembers your coffee order; where friendly proprietors brighten your day and help you feel connected in your local community. They provided goods, services and connection during lockdowns, when

our neighbourhood became our world. I encourage you to reconnect with local shops, restaurants and characters at Martins Lne in Viewbank, Greville Rd in Rosanna and in Yallambie. In doing so, you are not only supporting local businesses, you are supporting families, who then support other local businesses and keep our communities strong.





Cr Elizabeth Nealy
Beale Ward

elizabeth.nealy@banyule.vic.gov.au
0435 243 598

Early works are underway in stage 2A of the St Helena Place development in St Helena, with construction currently concentrated on the south of the site. To minimise disruption for local residents, the developer has indicated that large trucks will not use local roads, and all construction access to the site will be via Diamond Creek Rd,

but do be mindful when you are out and about. If you live nearby, you would have been notified of the impending works and what to expect over coming months. This large residential development includes wetlands and a large green space allocation and was first permitted in 2014.



Cr Mark Di Pasquale
Bakewell Ward

mark.dipasquale@banyule.vic.gov.au
0481 002 299

Greensborough's train station is being upgraded and as part of that the Victorian Government has announced a bus interchange and a multi-level car park. The site for this development is at the corner of Para Rd and Flintoff St, opposite where the station is now located. The undercover bus interchange will include lighting and CCTV, making

it easier, safe and attractive for more people to use public transport.

Council has been advocating for such development, which will create links between the station and Main St, bringing more amenity, usability and life to the Greensborough town centre.

Image: Artist impression of car park



Cr Alida McKern
Chelsworth Ward

alida.mckern@banyule.vic.gov.au
0435 316 318

Chelsworth Park's Pitch 1 is getting new lights in Council's sports field lighting program. The Old Ivanhoe Soccer Club, which is based at Chelsworth Park, has grown substantially in recent years, particularly with junior and female participation, and we're excited to support community sport and the club's training needs with more lights.

We're installing energy-efficient LED lighting that is long-lasting and requires minimal maintenance. LEDs also give off less spillage, reducing disturbance to neighbours and wildlife. Old Ivanhoe SC has junior teams for girls and boys aged 5 to 18, as well as open and over 35s sides. See what the club has to offer at oldivanhoesc.com.au



Ward Rounds



Cr Peter Dimarelos
Olympia Ward

peter.dimarelos@banyule.vic.gov.au
0434 891 065

Work has begun on new community housing at the Bellfield Hub site, where 58 sustainable homes are being built. This \$24 million development is a joint project of Council, Launch Housing and the Victorian Government, which has contributed \$18.25 million. Council has granted a long-term ground lease on the site and Launch Housing will

build the development and manage it when complete. It's an exciting time for Bellfield, with the Hub opening and major improvements at Ford Park, across the road. A plot of commercial housing fronting Oriel Rd, awaiting a planning permit, will complete the picture for a thriving, diverse community with all services at their door.



Cr Rick Garotti
Grimshaw Ward

rick.garotti@banyule.vic.gov.au
0490 014 965

We've completed a big upgrade at Binnak Park to benefit existing users, Parade St Damian's Junior Football Club, and to provide a new home for Plenty Valley Cricket Club and Watsonia Sporting Club, who have had to relocate while their home grounds are used as support sites during construction of the North East Link. Council negotiated for the improvements

as part of the wider NEL project and the works were financed by the Victorian Government. In addition to the new pavilion, the upgrades include a function space, accessible and female-friendly change rooms, new surface and irrigation, cricket nets, improved lighting, electronic scoreboard and more car parks.



Cr Tom Melican
Ibbott Ward

tom.melican@banyule.vic.gov.au
0413 043 015

Following consultation on the draft plans for the new Rosanna Library, it was clear people wanted to retain more open space and trees. The revised plans add a third storey and reduce the footprint of the building, increasing open space and retaining more trees; they also include a roof-top garden. The new library will incorporate the Toy Library and a new

Maternal Child Health Centre. It will be much bigger and will take advantage of the latest in sustainable design and engineering, serving the needs the Rosanna community into the future. For information on how to check out the plans, see the story on page 6.

Image: Artist impression of library





Open House at ILCH

Ivanhoe Library and Cultural Hub (ILCH) has a new social enterprise café offering hospitality training and employment.

Council is pleased to partner with not-for-profit group Open House, who will run the café and train at least 12 local people each year and provide paid employment for six people who face barriers to employment.

Open House last year celebrated 50 years serving the Banyule community with the motto “a place for everyone to belong since 1971”. While it has operated a mobile coffee cart for some years, the venue at ILCH will be its first social enterprise café.

A community garden and apiary at the Open House headquarters in Macleod will provide produce for the café. The centre in Strathallan Rd also operates a bike workshop, youth programs, adult day activities, tool workshop and a weekly community dinner.

On Thursday afternoons Open House sets up at Malahang Reserve in Heidelberg West, offering coffee, bike maintenance and backyard sports, pictured here.

Order your 2023 Community Calendar now!

Register at banyule.vic.gov.au/calendar or call Customer Service on 9490 4222. Calendars will be posted later in the year.

Finding your feet through work

Marjan Marjani has landed on her feet with a job at podiatry charity Footscape.

An alumnus of Banyule’s 2021 Inclusive Employment Program, Marjan is based at the Footscape warehouse in Macleod and her work takes her out into the field with podiatrists and community groups. She is pictured here delivering shoes to Fitted For Work, which helps women experiencing disadvantage find work.

Footscape is headed by CEO Anthony Lewis, a podiatrist, and a volunteer committee of foot health specialists.

“Foot health is often overlooked, but it is crucial to mobility and general health and wellbeing.”

Footscape CEO Anthony Lewis

The group provides free podiatry, orthotics, shoes and socks to disadvantaged and homeless people through outreach, community health services and groups such as the Asylum Seeker Resource Centre.

As an asylum seeker from Iran, Marjan experienced challenges finding employment before joining Banyule’s Inclusive Employment Program. Marjan’s work now enables her to give back to the community in a meaningful way.



Ivanhoe Library & Cultural Hub

Events & activities

📍 275 Upper Heidelberg Road, Ivanhoe

Ivanhoe Library & Cultural Hub is subject to COVID-19 restrictions and proof of vaccination status. If unsure, please call or check our website for details and any updates prior to visiting.

🌐 banyule.vic.gov.au/ILCH

✉️ arts@banyule.vic.gov.au

☎️ 9490 4222



Kotodama

By Avan Anwar and Junko Azukawa

📅 18 March – 8 May

📍 Art Gallery 275

Kotodama means “word spirit” in Japanese. It refers to the belief that mystical powers dwell in words and names. This exhibition is a collaboration between a Japanese ink artist and a Kurdish visual artist who have different cultural and linguistic backgrounds but share the same respect for the spirit and energy held in words. In Kurdish culture, words are mystical tools used in poems to evoke a significant power and impact on people’s emotions.

Image / Kotodama, by Avan Anwar and Junko Azukawa



Words Alive - Poets in residence

📅 1 - 22 May

📍 Mungga Artist Studios

📄 [Workshops: banyule.vic.gov.au/WordsAlive](http://banyule.vic.gov.au/WordsAlive)

After a series of poetry performance nights in 2021, Words Alive is back for a residency at ILCH. Mungga Artist Studios will be filled with poetry and storytelling as Fleassy Malay and guests artists will lead workshops to inspire creative expression and bring your words to life.



Polymorpha: the art of Emerson Zandegu

In celebration of the International Day Against Homophobia, Biphobia, Intersexism and Transphobia (IDAHOBIT)

Exhibition 📅 5 - 19 May 📍 Art Gallery 275

Special IDAHOBIT Celebration 📅 17 May, 6pm-8.30pm

📍 Yarra-me Djila Theatrette

FREE event. Bookings essential at banyule.vic.gov.au/IDAHOBIT2022

Emerson Zandegu is a local artist whose colourful and eclectic body of work explores identity, gender, and the natural world through visual storytelling. Using 2D animation, Emerson creates rich worlds of vibrant characters, but it all starts with an idea and a sketch. Polymorpha (meaning “many shapes/forms”) is an exhibition showcasing his 2D animations and the creative process behind them, including a behind-the-scenes look at his upcoming short film, FUN GUY. *Image / Fun Guy Exploration, by Emerson Zandegu*



Movement for Five Guitars

📅 28 May

11am at Bell St Mall, Heidelberg West
4pm & 6pm at ILCH

📍 Bell St Mall, Heidelberg West & Ivanhoe Library & Cultural Hub

'Movement for Five Guitars' is an open-air performance piece that experiments with music, movement and site. Composed by Lucas Michailidis and performed by an ensemble of five guitarists in circle formation, it will be bringing contemporary music to the Bell Street Mall and Ivanhoe Library & Culture Hub in May.

For more information go to: banyule.vic.gov.au/ILCH



1000 make it

By Hayden McLean, curated by Jodie Ohm Zutt

📅 26 May - 26 June

📍 Loft 275

"If you have autism, the brain is like a kaleidoscope where the pattern never settles"

- Phoebe Caldwell

Hayden McLean is passionate and prolific, with a strong daily art practice. He draws the world around him and within him, using drawing to communicate his needs and emotions. He is also a woodworker and maker of cord and shoelaces.

Hayden's creative output is strongly linked to his sensory needs; he needs boundaries to feel safe. It is known that autistic people tend to protect themselves from sensory overload by stimming (behaviour consisting of repetitive actions or movements).

This exhibition is a journey through Hayden's visual world. Find out more at banyule.vic.gov.au/Hayden

Image / Laces and self portrait by Hayden McLean



Words Alive

Poetry and Visual Art Exhibition
curated by Fleassy Malay

📅 15 April - 1 May

📍 Loft 275

📍 Workshops: banyule.vic.gov.au/WordsAlive

Featuring:

- Brendan Bonsack
- Suri Chan
- Djarima Arts
- Fleassy Malay
- Joel McKerrow

Poetry is more than words on a page. It can be a feeling, a lived experience, a movement of light, a series of sounds, or a story. These are the things that poets attempt to capture in their art.

This exhibition acknowledges that as creatives, poets are multifaceted in their exploration and expressions of "poetry". Here, we celebrate the multi-disciplinary nature of creativity and expression.

Check our website for workshops and associated events: banyule.vic.gov.au/WordsAlive

Image / Fleassy Malay



Rainbow Social Art Club

📅 First Saturday of the month, starting 4 June

🕒 2pm-4pm

📍 Community Lounge, ILCH

Led by local artist Emerson Zandegu, Rainbow Social Art Club is an afternoon of art making and mingling for young LGBTIQ+ people. Join us for guided activities from guest artists or pop in to use the space and work on your latest art project alongside fellow art enthusiasts.

Find more information at banyule.vic.gov.au/RainbowSocial

Image / Detail from animation by Emerson Zandegu



Hayden McLean & Jodie Ohm Zutt residency

📅 26 May - 26 June

📍 Mungga Artist Studios

Hayden Mclean and Jodie Ohm Zutt live and work in Banyule. They will bring their collaborative practice to ILCH, drawing in their sketchbooks, working on their computers doing digital drawing and video editing. Hayden will also be French knitting cord and laces.

Their collaboration relies on mutual respect, patience, tolerance and a shared goal. They share a working process and language that has developed over the last two years.

Hayden and Jodie invite the community to come and engage with them during this residency.

Image / Self portraits, Hayden McLean & Jodie Ohm Zutt



Considering the Land

By Peta Clancy and Jo Scicluna

In honour of Reconciliation Week (27 May - 3 June)

📅 20 May - 17 July

📍 Art Gallery 275

This exhibition considers the land on which we live from the perspective of a First Nations person (Peta Clancy) and a first-generation migrant (Jo Scicluna), creating a space for conversations between the two artists, the land, First Nations Elders, and the community.

A descendant of the Bangerang Nation, Peta worked in collaboration with Dja Dja Wurrung Traditional Custodians, for this exhibition. These artworks were first exhibited at the Koorie Heritage Trust in 2019.

Jo's artworks are part of a commission by Gippsland Art Gallery in 2019, and were developed in consultation with Gunaikurnai community representatives.

Join us for discussion, understanding and reconciliation.

banyule.vic.gov.au/exhibitions


Magic & Movies

Bring a date for a night of magical entertainment at Ivanhoe Library and Cultural Hub.


Allow your imagination to take flight and awaken your inner child. Be cast into a surreal world of vaudeville charm and mystical enchantment with Mr Marmalade the magician.

Then, settle in for a screening of 'Love Land' (rated M). This sci-fi movie set in the near future, tells the story of Jack, a mercenary who lives a lonely and monotonous existence filled with robotic lovers and callous executions. Everything changes when he meets April, a soulful karaoke geisha. As his heart comes alive for the first time, his body mysteriously begins to break down. Pursued by robotic henchmen, Jack seeks the help of Dr Bergman, a reclusive scientist who may hold the answers to his dark predicament.

 **Friday 17 June and Thursday 23 June**

 **Doors open at 6pm, Mr Marmalade at 6.30pm, movie at 7.30pm**

 **Ivanhoe Library and Cultural Hub, 275 Upper Heidelberg Rd, Ivanhoe**

 **Tickets \$10. Over 18s event**
Savory and sweet packs available for purchase.



Bookings essential at trybooking.com/BXZEW or scan the code



World Wide Knit in Public Day

Calling Banyule Knitters. Once again, to celebrate World Wide Knit in Public Day we're hosting a special afternoon Devonshire tea in the library at Ivanhoe.

Come along and show everyone how much fun knitting is and sit back and share a yarn. Prizes to be won. Novices to experienced knitters. All welcome.



 **Saturday 11 June**

 **2pm-4pm**

 **Ivanhoe Library and Cultural Hub, 275 Upper Heidelberg Rd, Ivanhoe**

 **Free event. No bookings required**

CHILLIN' IS BACK!



ENJOY A JAM-PACKED
CALENDAR OF LIVE MUSIC
ACROSS BANYULE
Over 60 performances at local
cafes and restaurants from
21 April - 15 May 2022

FIND A GIG AT
BANYULE.VIC.GOV.AU/CHILLIN
OR SCAN THE CODE



Contact Us

All enquiries

PO Box 94, Greensborough, VIC 3088
Phone 9490 4222
enquiries@banyule.vic.gov.au
banyule.vic.gov.au

Council Service Centres

Greensborough 1 Flintoff St
Ivanhoe 275 Upper Heidelberg Rd
Rosanna 72 Turnham Ave (currently closed)
COVID-19 restrictions may impact operations so please check our website for up-to-date information.
Our customer service staff can also assist you over the phone.

Hearing or speech impaired

Call us through the National Relay Service on 133 677 (TTY) or 1300 555 727 (ordinary handset) and contact 9490 4222.

Interpreter service

إذا كنتم بحاجة إلى مترجم يرجى الاتصال بالخط القومي للترجمة الهاتفية على الرقم 131 450 وطلب إيصالكم ببلدية بانيلول على الرقم 9490 4222.

如果你需要一名翻译, 请打电话到国家电话翻译服务处 (TIS National) 131 450, 再转接到 Banyule 市政府 9490 4222

若你需要口譯員, 請致電 131 450 聯絡 TIS National, 要求他們為你致電 9490 4222 接通 Banyule 市政廳。

Ako vam je potreban tumač, molimo vas, nazovite TIS National na broj 131 450 i zatražite da vas se spoji sa Vijećim općine Banyule na broj 9490 4222.

Se hai bisogno di un interprete chiama TIS National al numero 131 450 e chiedi di essere messo in comunicazione con il Comune di Bayule al numero 9490 4222.

Αν χρειάζεστε διερμηνέα τηλεφωνήστε στην Εθνική Υπηρεσία Διερμηνέων Μεταφραστών στον αριθμό 131 450 και ζητήστε να σας συνδέσουν με τη Δημαρχία Banyule στο 9490 4222.

Ако ви треба преведувач ве молиме јавете се на TIS NATIONAL на 131 450 и замовете да ве поврзат со Banyule Council на 9490 4222.

Haddii aad u baahan tahay mutarjum wac khadka qaranka oo ah TIS 131 450 weydiina in lagugu xiro Degmada Banyule tel: 9490 4222.

Nếu cần thông dịch, xin gọi cho TIS Toàn Quốc qua số 131 450 rồi nhờ họ gọi cho Hội Đồng Thành Phố Banyule theo số 9490 4222 giúp quý vị.