

Banyule Banner

- 03 Uluru Statement from the Heart
- 12 Your community services
- 16 School holiday activities

March 2023



Mayor's Message

Mayor Cr Peter Castaldo



You can help shape our economy

I'd like to invite you to have your say on the draft Economic Development Strategy to help shape economic trends impacting our local economy. Our five-year plan will support Banyule's economic activity and highlight opportunities supporting businesses in Banyule and creating jobs for locals. Visit shaping.banyule.vic.gov.au/EcoDevStrategy or turn to **page 4** to find out more.

Public art makes for great viewing

I'm pleased to share that Council's Rediscover Local team has been working with local businesses in Heidelberg West to create vibrant roller door artwork. The Creative Roller Door Project promotes a

sense of connection with the local community, improves the local area's identity and celebrates local character. To watch a video about the program, turn to **page 8** and scan the code.

Developing bike confidence

Cycling is a great passion of mine and it's wonderful to see so many local school children cycling, scooting or walking safely to school. Council's Active to School program helps Banyule schools develop sustainable ways for local children to get to school. If you, or your little ones, are new to biking or if it has been a while since you got on your bike, why not attend our popular Council-run bike sessions – I might see you there! Find out more on **page 12**.

Community services that make Banyule great

There are more than 100 Council services that support our community. Over the year, we'll focus on one of these services in each edition of the Banner. You will meet the dedicated people who work here and get a behind-the-scenes sneak peek at how the service works and how it contributes to our community.

In this edition, we meet Wendy, a Banyule preschool teacher, and we find out how her passion for her job helps fuel the curious minds of some of Banyule's littlest residents. Go to **page 12** to find out more about Wendy and the wonderful work she does.

Stay in touch with us digitally

 Email newsletters

banyule.vic.gov.au/subscribe




@BanyuleCouncil

Have your say on important projects and local initiatives

 shaping.banyule.vic.gov.au

COVER: *Watsonia Heights Primary School children, recipients of an environment grant. Story on page 14.*

Council Meetings

 Upcoming dates:
20 March
1 May

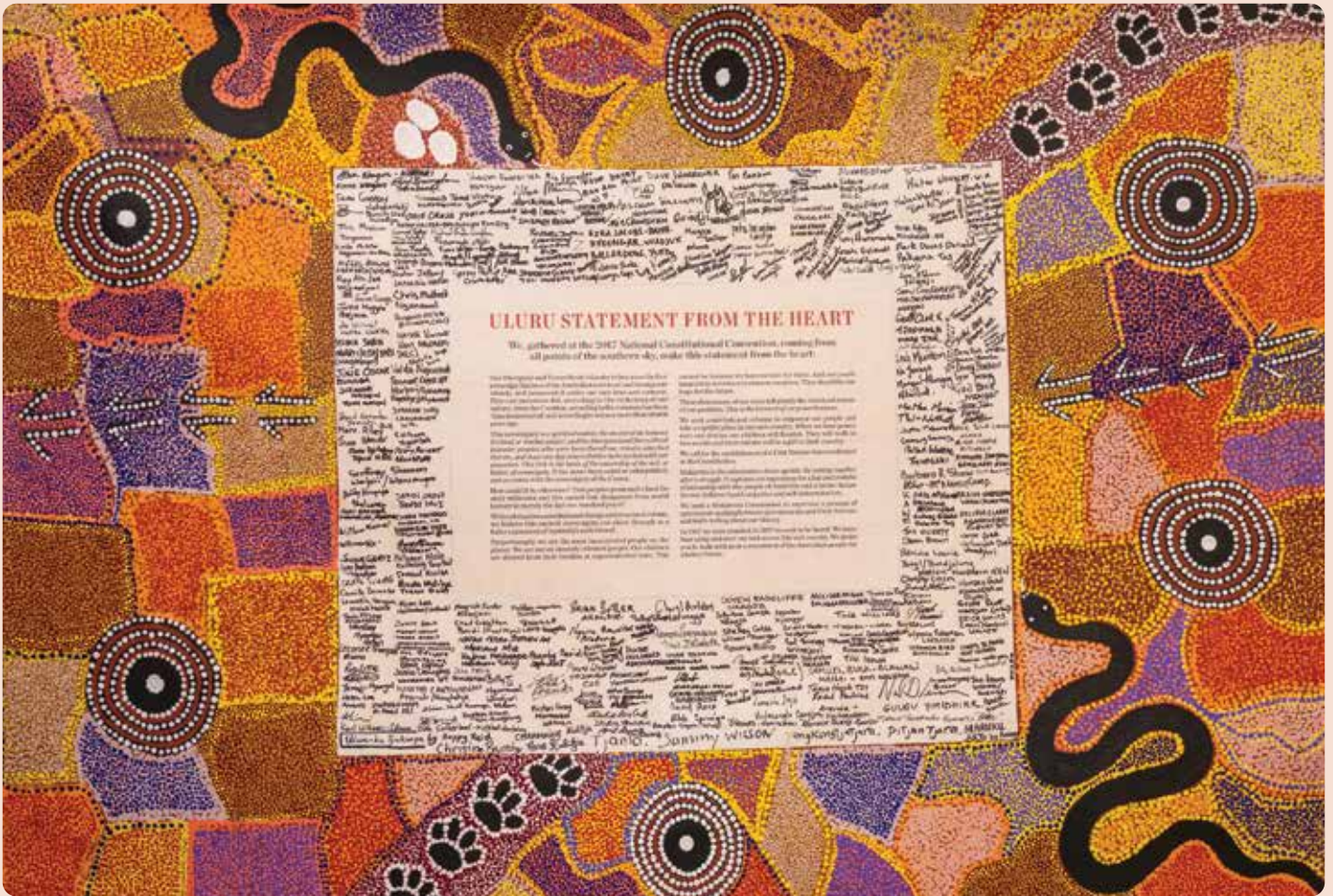
 From 7pm

 Council Chambers @ Ivanhoe Library and Cultural Hub,
275 Upper Heidelberg Road,
Ivanhoe

For agendas, minutes, public question time and request to speak forms, visit banyule.vic.gov.au/CouncilMeetings

Banyule City Council is proud to acknowledge the Wurundjeri Woi-wurrung people as Traditional Custodians of the land and we pay respect to all Aboriginal and Torres Strait Islander Elders, past, present and emerging, who have resided in the area and have been an integral part of the region's history.

Our community is made up of diverse cultures, beliefs, abilities, bodies, sexualities, ages and genders. Council is committed to access, equity, participation and rights for everyone; principles which empower, foster harmony and increase the wellbeing of an inclusive community.



Uluru Statement from the Heart



Banyule Council has made a significant commitment to adopt the Uluru Statement from the Heart in full and to take practical action to advance its core components: Voice, Treaty and Truth Telling.

What is the Uluru Statement from the Heart?

The Uluru Statement is a call from Aboriginal and Torres Strait Islander people to change the way Indigenous Australians are recognised and give them a stronger voice in their own affairs. It is a call for fair and practical change, to include Indigenous Australians in the Australian Constitution and give them the recognition they deserve, having been on this land for more than 60,000 years.

Why is the Uluru Statement needed?

Change is needed because Australia has seen decades of failed policies directed towards Aboriginal and Torres Strait Islander people; policies created by governments without input from the Aboriginal and Torres Strait Islander people who are directly affected by them. These policies have often been formed from good intentions, but they have not delivered better outcomes.

What can you do to support the Uluru Statement from the Heart?

Practical actions you can take to show your support to the Uluru Statement from the Heart include:

- Educate yourself on the topic
- Sign the canvas
- Have a conversation with friends and family

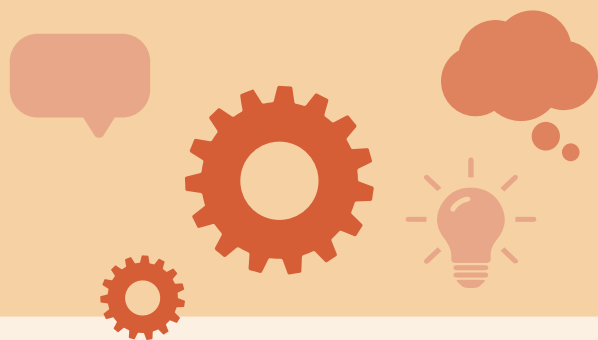
Find all the information at ulurustatement.org and fromtheheart.com.au

Honouring our commitment to the Uluru Statement

Together with our First Nations community and Banyule's Reconciliation Action Plan Advisory Committee, Council is acting on our commitment to the Uluru Statement and will hold community dialogues and information sessions to promote discussion and understanding of the Statement and the opportunities it presents for connection between our First Nations community and the wider Banyule community.

Shaping Banyule

Get involved in local projects



Are you interested in the future of waste at Banyule?

Council is reviewing its Towards Zero Waste Management Plan, which will include a number of legislative changes that Council is required to action over the coming years. Community voice is important to help us get this right! Have your say by attending one of our Trash Talk forums or completing the Waste Survey.

Trash Talks forums

🕒 **Tuesday 28 March and Thursday 30 March**

Get involved and provide your feedback to help inform the roadmap for the next four years.

Waste Survey

Community survey online from mid-April.

For more details contact Alana, scan the code or visit shaping.banyule.vic.gov.au/TZW

Your Council contact:

Alana Shepherd

Senior Team Leader Waste Education and Facilitation

Phone: **9049 3355**

Email: alana.shepherd@banyule.vic.gov.au



Have your say on the draft Economic Development Strategy

Our thriving, sustainable and inclusive community requires an economy that supports a diverse business base and provides investment and employment opportunities for all. Council's draft Economic Development Strategy is designed to do just that.

There are six strategic themes that consider the economic and demographic trends impacting our local economy:

- A dynamic and supported business community
- Workforce growth, attraction and diversity
- A prosperous national employment cluster
- Thriving and vibrant activity centres
- A desirable destination for visitors
- An environmentally sustainable local economy

The Economic Development Strategy has a five-year plan to support Banyule's economic activity and sustain growth, as well as long-term strategies that link to the Council Plan and Community Vision.

We'd love to know what you think. Find out more and complete the survey at

shaping.banyule.vic.gov.au/EcoDevStrategy or scan the code below.

Your Council contact:

Derek Ephrem

Economic Development Coordinator

Phone: **9242 3492**

Email: derek.ephrem@banyule.vic.gov.au



Have your say and shape your community

We're committed to working with our community to build and strengthen relationships that inform and help make decisions.

To have your say on local projects and activities, sign up to Shaping Banyule at shaping.banyule.vic.gov.au or scan the code.





A plan to improve Heidelberg Park

Last month, Council endorsed a masterplan for Heidelberg Park that will help guide improvements, maintenance and management of the park. After three phases of consultation, the masterplan is well supported by the local community, with 87% of respondents saying they support the inclusions in the plan.

Rich in history, Heidelberg Park is one of Banyule's most beautiful open spaces and is a unique and special place for the local community. The land was set aside for public parklands from the earliest days of Heidelberg township and became an important place for active and passive recreation, activities that remain popular today.

The masterplan will guide Council in managing Heidelberg Park over the next decade, ensuring the park fulfils the needs of the growing community. The plan outlines a vision to acknowledge and uncover the First Nations cultural heritage of the area, provide diverse and resilient landscapes, improve amenities and enhance visitor experiences.

To view the Heidelberg Park Masterplan scan the code or go to shaping.banyule.vic.gov.au/HeidelbergPark



Protect yourself, protect your community – get your flu vaccine

Every year the influenza strain changes. It is important to immunise yourself before winter kicks in.

This year, the government will not be providing a free flu vaccine. Council will be running flu only vaccination sessions across the municipality in April and May. The vaccine is available at a cost of \$25 per vaccine (payable via EFTPOS). Children aged 6 months to under 5 years are eligible for a free flu vaccine.

For session details, to make a booking or for more information, visit banyule.vic.gov.au/immunisation or scan the code.



Rising to the challenge of inclusive employment

Sue Arthur was shopping at Northland when she met David Chasemore and challenged him to find a job for her.

One of Council's Jobs Victoria Advocates, David was at the shopping centre to promote Banyule's programs to assist people facing barriers to employment.

"I said to him, 'I bet you don't employ people like me,'" Sue remembered.

Sue had worked in paid and volunteer roles in disability advocacy and knew she had skills to offer.

"I wanted a job that used the experience I had gained from self-advocacy, but I didn't know what that looked like. I didn't think the 'outside world' employed people with disabilities. When I heard about Banyule's Inclusive Employment Program, I did not want to miss out."

Sue is one of 15 participants in the 2023 Inclusive Employment Program. She is working as a Community Impact Support Officer, helping Council audit and improve inclusivity and accessibility in its community services and Council practices.

The award-winning program provides a six-month job opportunity with Council, as well as mentoring and career coaching, and has become a benchmark for other municipalities and employers to follow.



Of 53 people who have graduated from the program, now in its fifth year, most have gained employment at Council or elsewhere, while others have gone on to study in their chosen field.

"It was bit daunting to start with, but I'm already getting valuable experience and I can see I'm having an impact in my community," said Sue.

"I just wish more workplaces would stop thinking about disability being a problem and see how it can be helpful."

Find out more at banyule.vic.gov.au/InclusiveEmployment

To learn how your business could benefit from inclusive employment, contact our Local Jobs team via email localjobs@banyule.vic.gov.au

Get bowling with social sessions for seniors

Are you looking for a way to get active and connect with others?

Banyule Council is teaming up with Greensborough Bowls Club to host three social lawn bowls sessions for seniors. Each session includes an hour of social bowls followed by morning tea. Suitable for beginners or people who have played bowls before.

📅 Mondays 20 March, 27 March & 3 April

🕒 10am-12pm

📍 Greensborough Bowls Club, 18 Liat Way, Greensborough

Cost: \$10 per session

Bookings essential: call Banyule Customer Service on **9490 4222**

Places are limited so please book ASAP!

Questions? Your Council contact is:

Ryan Batchelder

Sports, Recreation and Participation Officer | Ph: **9049 3369**



North East Link update

Final designs for the North East Link between Watsonia Road and the M80 Ring Road are in the pipeline.

North East Link has chosen a preferred partner to build this section of the road and has begun considering final plans and costings to deliver the project.

Council recently met with North East Link and their preferred partner to highlight a number of improvements to the current designs that will provide better amenity, accessibility and connectivity for residents along with environmental, social and economic benefits.

Council articulated why a lid on the link between Watsonia Road and Elder Street is essential and demonstrated the importance of connecting new bike paths with existing bike paths, replanting trees locally to replace those removed, ensuring North East Link integrates with an accessible Watsonia Station and managing the impact of increased traffic on surrounding roads.



Scan the code to watch the video

We also shared the overwhelming support that more than 2000 residents have given to the Lid the Link campaign in search of the best design outcome.

The voice of local residents and traders was featured in a short video during the meeting. Scan the code above to watch the video or go to shaping.banyule.vic.gov.au/NorthEastLink

Council has been advised that designs are underway and are expected to be publicly released around September this year with Council and the community having 28 days to respond and comment before it is sent to the Minister for signing off.

Sign up to follow the project at shaping.banyule.vic.gov.au/NorthEastLink

Council will notify residents when Urban Design and Landscape Plan for the northern section become available.



Advocating to deliver key projects

Twenty five projects have been identified as advocacy priorities for the community. Council is seeking investment from the Victorian and Australian Governments to deliver these projects, which include:

- A better design for North East Link
- Upgrades to Ivanhoe and Watsonia Railway Stations
- Improved cycling trails
- Electrification of our leisure centres
- Improved pedestrian access at Odenwald Rd Bridge

A number of Council's advocacy priorities have had a successful outcome in the past six months including:

- A \$32.8 million commitment from the Victorian Government to build a bicycle path along the railway line between Montmorency and Eltham.
- Compliance that all new homes must now have a seven star energy efficiency rating
- Introduction of a national Electronic Car Discount Bill to encourage uptake of electric vehicles.



Michele, Advocacy Lead, at a community forum

Other achievements have included:

- 2000 residents supporting the Put A Lid On It Campaign for a better design of North East Link than currently proposed.
- Hosting the Banyule Transport Forum and providing opportunities for the community to ask questions of local candidates prior to the Victorian election.
- Compilation of an Advocacy Priorities booklet and accompanying fact sheets highlighting Council's priorities.
- Joining with six other Melbourne Councils to launch regional priorities.

More information on Council's priorities can be found at banyule.vic.gov.au/Advocacy



Art on a roll!

How roller shutter art is transforming local shop fronts

If you have visited Heidelberg West recently, you may have noticed the bright, colourful and creative roller doors adorning local shop fronts. The exciting Roller Shutter Project was spearheaded by Banyule Council's Rediscover Local program. As a result, shop fronts in the area have been reinvigorated with the new artwork, improving the area's visual appeal.

The program came about as a solution to the excessive graffiti tagging of roller shutters on shop fronts across Heidelberg West. Business owners were engaged and invited to share their ideas for a unique design that reflects their culture and business. Using inspiration from the Rediscover Local campaign and with the business owners' input, vibrant artwork was developed to promote a sense of connection with the local community, improve the local area's identity and celebrate local character.

We are absolutely thrilled with the outcome and hope you are too!



Scan the code to watch a video on how this project came to life.



Artist impression of proposed design

Parking improvements in Heidelberg

Banyule Council is pleased to announce, following an extensive tendering process with high-quality candidates, it has entered into a Project Development Agreement with Hallmarc to deliver the Cartmell Street Development Project.

The project will see the current car park replaced with a new multi-deck car park that approximately doubles the number of existing spaces. The new car park will include electric vehicle charging stations and be future-proofed for potential changes in use.

Hallmarc will transfer ownership of the public car park back to Council, and then utilise its air rights above to

deliver an architecturally and environmentally sustainably-designed residential development. Further, Hallmarc will include a green landscaped area linking Cartmell Street and Sheffields Lane, therefore greatly improving access to the Burgundy Street shopping precinct.


It is anticipated that there will be some disruptions to parking when construction is expected to commence in early 2024. Council will continue to liaise with residents and traders as the project progresses.

For more information contact Daniel Fantin, Major Projects Property Coordinator, email daniel.fantin@banyule.vic.gov.au

Business workshops

Banyule Business, in conjunction with Small Business Mentoring Service, is offering free face-to-face small business clinics. The sessions will provide general business advice and can assist with information on overcoming a variety of business issues.

Twilight session

 Tuesday 4 April, 4 – 7pm

 Ivanhoe library
275 Upper Heidelberg Road, Ivanhoe

Day session


 Tuesday 9 May, 10am – 1pm

 Banyule Council Offices
1 Flintoff Street, Greensborough


We're here to help

To register and for more information go to banyulebusiness.com.au/workshops-and-events or scan the code.

For business support and advice connect with us.

 banyulebusiness.com.au

 banyulebusiness

 banyulebusiness





Assistance Dogs

Making life more inclusive for people with disability

Dogs hold a special place in many families across Banyule, providing companionship, support and love. For some people with a disability, their dog is so much more than a pet – the dog “works” for them.

After more than two years of specialised training, there are many tasks an assistance dog can do- opening and closing doors, barking to alert their owner of danger or a medical issue, pushing pedestrian crossing buttons, paying cashiers and picking up dropped items such as keys or a mobile phone. Assistance dogs help people with a disability to get out and about in Banyule confidently and live more independently.

Assistance dogs with public access rights are welcome in all public spaces and are permitted in shops and restaurants, as well as public transport, including buses. Assistance dogs wear a branded jacket and the owner carries documentation showing that the dog is qualified, accredited and serving the person they are with.

When you meet someone with an assistance dog, you will notice the dog is clean, healthy, well behaved and highly obedient to its owner. It is best to ignore the assistance dog as much as possible so as not to distract it from performing the tasks it has been trained to do. Talk with the owner instead!

For more information about assistance dogs, visit assistancedogs.org.au/studies



Autism Acceptance Day

📅 Sunday 16 April

🕒 11am – 3pm

📍 NJ Telfer Reserve, 20 Noorong Avenue, Bundoora

Meet your community, share stories and enjoy a range of FREE inclusive activities for children and adults.

This event is proudly sponsored by Banyule Council.

Bookings at trybooking.com/CFRQN

HARMONY WEEK

JOIN US IN
CELEBRATING
20 – 26 March

Everyone belongs in Banyule

Our residents and visitors to Banyule represent different cultures, beliefs, abilities, bodies, sexualities, ages and genders and together we all contribute to making Banyule a great place live. Harmony Day is a great time to come together to share, learn and appreciate the many ways we are similar and celebrate the ways we differ. Regardless of how you identify, Banyule invites

you to promote inclusion, show respect, support everyone to belong and, importantly, to stand up against discrimination, particularly on 21 March, the International Day for the Elimination of Racial Discrimination.

To discover more about hosting or attending a local celebration, visit [harmony.gov.au](https://www.harmony.gov.au)



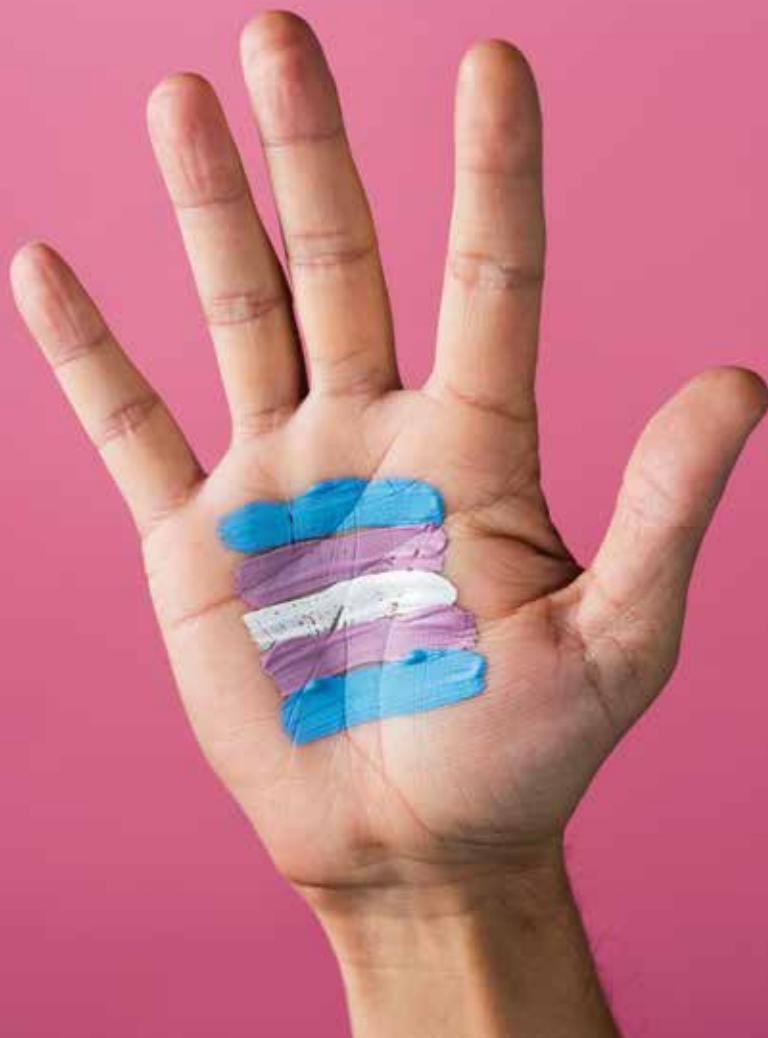
31 March

Trans Day of Visibility #BeSeen

Council stands with pride alongside our trans and gender-diverse communities to recognise, raise awareness and celebrate the international Trans Day of Visibility on 31 March.

Trans Day of Visibility is a day of pride, a time to help communities to understand what it means to be trans, and how to make Banyule a better, safer and happier place for all trans and gender-diverse people.

For more information on the importance of this day, check out Minus18 website for LGBTQIA+ youth at [minus18.org.au](https://www.minus18.org.au), or the Trans Day of Visibility website at [tdov.org.au](https://www.tdov.org.au)



Supporting Banyule

Get to know your community services

Support through the early years

Council's Maternal and Child Health centres are free for all families with children from birth to school age. In addition to checks on maternal and family wellbeing and the Key Ages and Stages of child development, we offer breastfeeding support, one-on-one and online sleep and settling

sessions, connection with other parents and children, and welcome events for families moving into the area.

Find out how we can help your family thrive at banyule.vic.gov.au/MCH or talk to a member of our team, phone **9490 4222** and select option 4.

Active learning

Sustainable and active transport is good for the environment and for your health. Council's Active to School program helps schools develop sustainable, active and safe routes for walking, cycling and scooting to school.

Two schools that completed the program last year saw an increase of up to 30% in the number of families enjoying active ways to get to and from school.

The student leadership group at Ivanhoe East Primary School inspired students and parents via classroom visits, a newsletter and assembly announcements about active travel. They also came up with a great incentive to motivate their peers – bonus house points

for all students who walked, cycled and scooted to school.

At Greenhills Primary School the student-led Sustainability Action Group, which holds regular Fuel-Free Friday events, led a Q&A and route mapping activities when Banyule staff visited the school (pictured). Thanks to all 107 students and parents who took part.

To learn more about the program and find out how your school can get involved in 2023, your Council contact is:

Charlotte Hunter
Sustainable Transport
Education Officer
Email: charlotte.hunter@banyule.vic.gov.au



Hands-on bike maintenance

Learn to change a flat tyre, adjust brakes and clean the drive-train.

Wednesday 29 March

6.15pm-8.45pm

Watermarc, 1 Flintoff St, Greensborough

Cost: \$21.60 or \$10.80 concession
Book: trybooking.com/983962

Banyule Mini Bikers

Intro to bike riding for kids aged 2 to 5. FREE event, children must be accompanied by an adult.

Tuesday 18 April

Delta Reserve, 77 Delta Reserve, Greensborough

Email for more more details: transport@banyule.vic.gov.au

Back on the Bike

A practical session for adults to improve riding skills and gain confidence.

Sunday 19 March or Sunday 2 April

9.30am-11am

Heidelberg West

Cost: \$25 or \$14.50 concession
Book: trybooking.com/983959

Council delivers more than 100 different community services. We'll be introducing you to the different ways we are supporting Banyule.

“Above all, my goal as a kinder teacher is to create a warm, nurturing and inclusive environment where every child feels safe and valued.”

Early Childhood Services

The art and science of child's play

There's a lot of thought behind the loads of play in Wendy's day as a Banyule early childhood teacher.

“We might wonder what would happen if we poured water into a sandpit hole, how we can make a paper airplane fly a bit further or why we can still see the moon during the day. We learn and teach through playing and doing,” said Wendy.

After studying a Master of Teaching and teaching in China and Australia, Wendy decided to focus on early childhood.

“I enjoy watching young children grow and develop; I find it very satisfying to see all our hard work pay off.

“High-quality early childhood education benefits brain development and helps children transition to school. It is also highly correlated to future academic performance, employment and social skills because early childhood education is play-based and child-centred and, through it, children build fundamental skills that will set them up for life.

“My passion is working in partnership with families, especially those from diverse linguistic and cultural backgrounds. The families we work with are so respectful and grateful. They are very open and proud to share what they do with their children at home and enthusiastic to contribute to the kinder program.”

Wendy also appreciates Banyule's network of early childhood professionals.

“Everyone works very closely together, with the same goal of bringing the best education and care to each family in our community. We share ideas, resources and knowledge.”

With plans to study a doctorate in early childhood teaching, Wendy is hooked on kinder.



Schools riding high on environment grants

Congratulations to two local schools that have received Council Environment Grants to help boost active, healthy and sustainable transport options for travelling to and from school.

Watsonia Heights Primary School, pictured on the cover, has won a grant for its successful 'STRIVE to ride' program and will use the funds to update and expand its secure storage space for bikes and scooters.

The new equipment will include new storage racks, as well as air pumps and bike maintenance equipment.

Montmorency South Primary School will use their grant to install extra bike racks to support the growing number of children riding to school. The racks can also be used by community members.

Find out more about Council's Environment Grants at banyule.vic.gov.au/envirogrants




Come celebrate National Playgroup Week with us

A Little Messy Monday

 Wednesday 27 March

 10am to 12:30pm

 **Watsonia Library, 4 - 6 Ibbottson St, Watsonia**

Celebrate National Playgroup Week in Banyule with a playgroup morning of messy fun and creativity for the very young and young at heart. There's family story time at 10am which will be followed by an assortment of sensory activities in the community garden including slime, playdough, bubbles and water play. Join local artist Lou Endicott and help her create a beautiful picture celebrating play and playgroups.

This is a free event and bookings are not required.

For more information please contact Libby Mein, Early Years Community Support Officer at libby.mein@banyule.vic.gov.au

Join an online workshop and help our environment



Reusable nappy workshop

📅 Wednesday 5 April

🕒 7:30pm to 8:30pm

Switch to reusable nappies and you can save money and the environment at the same time. We run online workshops that introduce you to the modern reusable nappy. Discover all the tips and tricks that will help show you what a good option they are.

Best of all, you will receive 2 premium nappies, valued at \$70 that are yours to keep, try and use again and again (maximum 2 nappies per household).

Register at banyule.vic.gov.au/Nappy or scan the code

There is a \$20 fee per person to attend the workshop, and you will need a credit card to submit the form.



Composting workshop

📅 Tuesday 16 May

🕒 7.30pm to 8.30pm

Learn about all the tips and tricks to make great compost. Find out more about different containers, worm farming and Bokashi buckets.

You'll be surprised how much you can reduce your waste by diverting your kitchen scraps from landfill.

Free online workshop

Register at banyule.vic.gov.au/composting or scan the code



Want to know how we assess planning applications?

The Development Planning Team will host a community information session on how Planning applications are assessed under the Banyule Planning Scheme.

The session will cover Housing Framework, Residential Neighbourhood Character Strategy and State Government policy including ResCode. We will also outline how Environmentally Sustainable Design and tree retention and planting are considered. The Strategic Planning team will also provide an overview of future considerations for the Banyule Planning Scheme.

To book your place, please email vanessa.colenso@banyule.vic.gov.au

📅 Wednesday 5 April

🕒 5.30pm - 7pm

📍 Belfield Community Hub, 15 Daphne Cres, Belfield



Avoid school holiday boredom with fun events and activities happening in April



Banyule Flats nature mystery

📅 Saturday 8 April to Sunday 23 April

📍 Banyule Flats, Viewbank

Attention, junior agents! The Nature Play Detective Agency has a new mystery for you to help solve. Come and enjoy this self-guided audio tour through Banyule Flats Reserve. Listen as Belinda the Bush Detective guides you through the beautiful parklands, following audio clues and examining bush evidence to solve this puzzling mystery.

Suitable for the whole family, this nature mystery tour will particularly appeal to junior agents aged 6 - 10. You will need a portable device with internet access to participate. No bookings required.

Start at Somerset Drive carpark (behind the cricket nets). Go to the main Yarra Trail sign look out for the audio tour sign and scan the code.



Discover the mystery of dinosaurs with Museums Victoria

📅 Tuesday 18 April
10am, 11.30am and 1.30pm

📍 Bellfield Community Hub
15 Daphne Cres, Bellfield

Book at trybooking.com/CEWXQ
or scan the code



📅 Thursday 20 April
10am, 11.30am and 1.30pm

📍 NJ Telfer Reserve
145 Greenwood Drive, Bundoora

Book at trybooking.com/CEWXY
or scan the code



Dinosaurs have long been the subject of fascination for children and the travelling museum brings prehistoric learning experiences to Banyule. Through stories and activities, this program will introduce children to the ways palaeontologists have come to understand dinosaurs through finding and studying fossils. Children will be able to talk to experts, touch and feel real dinosaur fossils from the Melbourne Museum's collection, learn about ancient time periods, see life-size replicas of dinosaur skulls, feet, and legs, and classify their favourite prehistoric creatures as herbivores or carnivores.

Suitable for ages 4 - 12. This is a free event. Bookings are required. Bookings open March 25.



Star gazing

📅 Saturday 29 April, 6pm - 8.30pm

📍 Anthony Beale Reserve Oval, 279 St Helena Road, St Helena

Come along to Anthony Beale Reserve oval and gaze at the stars. Volunteers from the Astronomy Society of Victoria will be on hand with equipment and telescopes to help us navigate the night sky and explore the natural wonder of our galaxy and universe.

Suitable for all ages. This is a free event.
Bookings are required. Bookings open 25 March.

Book at trybooking.com/CEWYL or scan the code



Basic bike repairs

📅 Saturday 15 April, 9am - 10am

📍 Warringal Park, Possum Hollow Playground
Beverley Road, Heidelberg

Bike maintenance is very important so before we go on any bike ride we must ensure our bikes are ready to ride. The bike maintenance crew will only be able to do the basic repairs below:

- punctures
- check tyre pressure
- adjust brakes
- adjust gears
- check for loose nuts and bolts and oil chain

This is a free event. Bookings are required.
Bookings open 25 March.

Book at trybooking.com/CDLIF or scan the code



Come along for a community bike ride

📅 Saturday 15 April, 10am to 12pm

📍 Warringal Parklands, Possum Hollow Playground
Beverley Road, Heidelberg

Before we start our bike ride we'll chat about helmets, the importance of safety checks and maintenance (no repairs at this session). During the ride, staff members will set the pace upfront, in the middle and at the back. Staff will also have radio communication to ensure the safety of all riders.

After the ride, please join us for refreshments at Chancez café in Possum Hollow.

Suitable for ages 7+. This is a free event.
Bookings are required. Bookings open March 25.

Distance estimated 10 - 15km, or approximately 1.5hrs.
All children are to be accompanied by a supervising adult.

Book at trybooking.com/CDLIU or scan the code



Ivanhoe Library & Cultural Hub

Events & activities



Going Deeper: curated by Amy Kennedy

📅 21 April – 14 May
Opening Night: Friday
21 April, 6 - 8pm

📍 Loft 275

This exhibition brings together the art and writing of 33 visual artists who met online in 2020, during Covid lockdown. Showcasing ceramics, painting, printmaking, sculpture, textiles, drawing, alongside the writing of each artist. It will explore the relationships between writing and visual art making, building a community through writing, and the demystification and democratisation of writing.

This exhibition and programs are proudly supported by a Banyule Arts and Culture Project Grant.

For information on featured artists visit banyule.vic.gov.au/exhibitions

Image Credit: screenshot of the Going Deeper artists meeting online



A Gift of Fire

📅 12 April – 4 June
Opening night: Friday
21 April, 6 - 8pm

📍 Art Gallery 275

A showcase of ceramic art in Banyule, this exhibition features ceramic artists who live and work in Banyule. Each artist has differing practices, using this versatile medium in very different ways, from the functional to sculptural, from practical to whimsical and everything in between. Their minds and talent shape the clay, but each piece must pass through fire, and emerge from the flames, as a gift.

For information on featured artists visit banyule.vic.gov.au/exhibitions



RETRO 80: by Gail McCall

📅 25 March – 16 April

📍 Loft 275

To celebrate her 80th birthday, we're presenting a retrospective of the creative work of textile artist Gail McCall. Gail is the founder of the Textile Art Community in Banyule, now known as TACAS. In addition to being a talented artist she is also an environmental activist.

For opening night details and more information visit banyule.vic.gov.au/exhibitions

Image Credit: detail of artwork by Gail McCall

Comedy on Burgundy Street

Banyule has a comedy club! Laugh Track Live Comedy will present a series of live stand-up shows featuring some of Australia's top tier comedic talents at Red Olive Restaurant on Burgundy Street in Heidelberg.

See who's coming up at trybooking.com/eventlist/laughtrackcomedy

This event is supported by a Banyule Arts and Culture Project Grant.

All events at Ivanhoe Library & Cultural Hub are free, but please check the website for updates prior to visiting or contact us if you have any questions.

🌐 banyule.vic.gov.au/ILCH

✉ arts@banyule.vic.gov.au

☎ 9490 4222

Going Deeper Studio Residency: Artist-in-Residence

📅 21 April – 14 May

📍 Mungga Artist Studios

As part of the Going Deeper exhibition, two of the exhibiting artists will also be in residence, sharing their practices and engaging with our community:



Artist Studio 1: Claire Ellis

Claire Ellis is a Canadian-born emerging ceramic artist and designer based in Naarm (Melbourne). While working as a chef at the internationally acclaimed restaurant Attica, Claire began making tableware for the tasting menu, and created a ceramics studio within the restaurant. Claire's chef experience influences her work through a focus on raw materials and experimentation.

During her residency, Claire will research and explore her idea of zero waste glazes – ceramic glaze recipes made entirely from waste materials and engaging with our community for their feedback on waste materials that exist in their home or industry.



Artist Studio 2: Hollie Nair

A contentedly chronic “over thinker”, Hollie seeks to understand the deeper, inner parts of our humanness and how the power of memory, emotion, story-telling, empathy and connectedness affects our daily lives. Hollie works from her studio on Gunaikurnai country, using a wide range of mediums including ceramics, textiles, gouache and acrylics and collage, as well as found materials and objects to explore these ideas through colour, patterns and texture.

During her residency, Hollie will create a fabric art book, exploring the bifurcation and connection between art and craft. Hollie will engage our community in her quest to understand what people think is art vs craft and creative activity.



Peter Sward Artist-in-Residence

📅 27 March – 16 April

📍 Mungga Artist Studios

Peter Sward is a local self-taught artist, working mainly with oil paints. Peter has a soft spot for realist landscapes, both simple and complex, enjoying the challenge of recreating the colours and forms of nature on canvas. Peter's artwork, Moon Porthole, won 2nd prize of the People's Choice Award in the 2022 Banyule Art Salon.

During his time in residence, Peter is keen to run workshops to show people how they can create a simple landscape painting with oil paints. Check our website for details closer to the date.

Ward Rounds



Cr Peter Castaldo
Griffin Ward

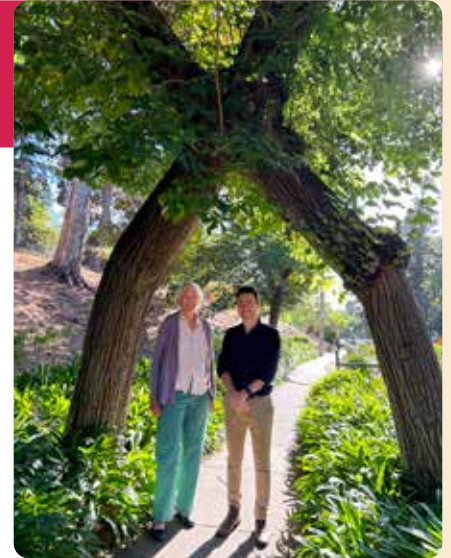
peter.castaldo@banyule.vic.gov.au
0466 502 698

I'm happy to share that Council has endorsed a masterplan for Heidelberg Park, which will help guide the future improvement, maintenance and management of the much-loved park. Through public consultation, the final plan was produced in November 2022 and was supported by the local community.

I met up with Daphne Hards from

Warringal Conservation Society at the popular Wishing Tree, to discuss how the plan will help preserve the park's heritage and cultural values, ensuring we can continue to provide a high quality, sustainable, accessible, safe, inclusive and well-maintained park that promotes health and wellbeing.

To find out more, visit shaping.banyule.vic.gov.au/HeidelbergPark



Cr Alison Champion
Sherbourne Ward

alison.champion@banyule.vic.gov.au
0466 486 593

Sporting grounds and reserves are an important feature of our community. They help us stay connected, encourage participation in organised sports and promote active and healthy lifestyles.

I'm pleased to announce that Council is working on the construction of a new irrigation system and baseball

diamond at Glenauburn Park in Lower Plenty. Works are well underway and are scheduled to be completed soon.

The improvements will enhance the playability of the sporting surface and will be a welcome upgrade to the sporting clubs that regularly use the ground – helping them hit more home runs!



Cr Fiona Mitsinikos
Hawdon Ward

fiona.mitsinikos@banyule.vic.gov.au
0434 891 077

Over the Summer school holidays, Banyule Youth Services together with Jigsaw Jumps, Chevy Dalzell and Open House ran a two-day mountain bike event at Rosanna Parklands and Malahang Reserve.

It was inspiring to see more than 120 local young people get involved in the popular workshops and enjoy the outdoors.

Participation was open to riders of all levels and experience and everyone had a great time taking part in the supervised jump activities.

The event provided an opportunity for young people to learn new bike skills while finding out more about how to protect our natural habitats and parklands, safe riding and supporting your mates.



Banyule is made up of nine wards. To find out which ward you belong to scan the code



Cr Elizabeth Nealy
Beale Ward

elizabeth.nealy@banyule.vic.gov.au
0435 243 598

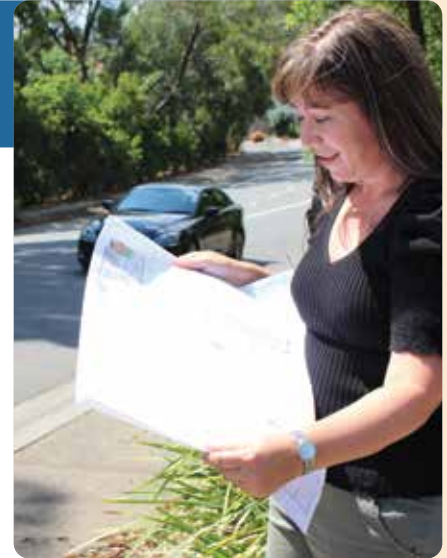
I'm pleased to share that the planning, design and approvals for a new pedestrian-operated signal on St Helena Road are well underway.

The new crossing and pedestrian refuge is located between Allumba Dve and Charles Hartley Dve and is estimated to be completed by early to mid 2024.

The crossing is a welcome addition for the local community and St Helena residents.

Once completed it will greatly improve pedestrian safety in the area, providing a safe place for St Helena residents to cross the busy road.

I'll keep you updated on the progress once the works commence.



Cr Mark Di Pasquale
Bakewell Ward

mark.dipasquale@banyule.vic.gov.au
0481 002 299

Now is the perfect time to start planning for the many fantastic community events and activities happening around Banyule in the school holidays.

Get on your bike and come to our bike maintenance workshop at WatermMarc on 29 March. Children aged 2 – 5 can also take part in a mini bikers event at Delta Reserve

in Greensborough. Balance bikes and pedal bikes will be provided. For more information go to **page 12**.

Older kids don't have to miss out on the fun. Together with a supervising adult, they can join us on a community bike ride. This is a free event suitable for 7 years plus and will take place on 15 April. For all the details go to **page 17**.



Cr Alida McKern
Chelsworth Ward

alida.mckern@banyule.vic.gov.au
0435 316 318

I'm excited to announce Council has committed \$460,000 to Chelsworth Park Tennis Club in Ivanhoe. I met club president Stephen Newnham and local resident Wayne Cowley to discuss the upgrade to a synthetic clay surface, the installation of new LED lighting, plus new court fencing. The project also includes the introduction of book-a-court, an

online platform that will improve local access to the tennis courts for greater community participation, recreation and training.

The enhancement to the courts is one of many exciting sports infrastructure projects identified in the Ivanhoe Sports Precinct Masterplan. I look forward to sharing more news on the projects throughout the year.



Ward Rounds



Cr Peter Dimarelos
Olympia Ward

peter.dimarelos@banyule.vic.gov.au
0434 891 065

The Bellfield Community Hub is truly a place for our community to come together and we have now made it easier for local residents, community groups and support groups to book a venue at the Hub. There are several spaces for hire, including a training room, two consulting suites and a large community space that can be

configured as one large area or three smaller rooms. The modern spaces have been designed with the local community in mind. We encourage programs for our under-served local community, but we welcome all. To book and to take a virtual tour visit banyule.vic.gov.au/BellfieldCommunityHub



Cr Rick Garotti
Grimshaw Ward

rick.garotti@banyule.vic.gov.au
0402 846 845

There's been great progress on the new town square in Watsonia and we're on track to commence building this year. Last month, I had the pleasure of meeting with local traders and residents to discuss the exciting project. During the consultation meeting, together with the community, we discussed how the town square will bring greater

focus to the Watsonia area. The new gardens, walking and cycling paths, increased seating, lighting and parking will make the new town square appealing to all ages and abilities and will cater to our diverse community. Construction is planned to commence in July 2023 and is estimated to be completed by early 2025.



Cr Tom Melican
Ibbott Ward

tom.melican@banyule.vic.gov.au
0413 043 015

The pop-up temporary library at Rosanna is now open. Located at 56 Beetham Pde Rosanna, it will remain open until the new library is completed in mid-2024.

You'll be amazed at what can fit in the temporary space! There's a Click & Collect service, along with printing and photocopying facilities, as well as free Wi-Fi.

With limited space, some favourite programs like Storytime will not run. However, Watsonia and Ivanhoe libraries are not far away and we'll be running extra events out of these locations. For the little ones, and those young at heart, there'll be Storytime sessions held at alternative locations. To find a Storytime session near you visit ypri.vic.gov.au



Bushland diaries

Burning for biodiversity

Locally indigenous grasses

Helping to promote biodiversity

Over the next few months, our Park Rangers will be conducting ecological burning in several bushland reserves throughout Banyule to promote biodiversity. Fire is a crucial component in the management of most of our bushland sites which have evolved alongside Wurundjeri burning practices for thousands of years. The intensity and frequency of burning depend on the composition of local indigenous plants*. Grassland reserves, for example, thrive with frequent low-intensity burns every two to five years whereas more forested areas are burnt much less frequently (up to 15 years or more).

Burning indigenous species reduces the build-up of biomass which opens gaps on the soil surface and provides the opportunity for germination.

Additionally, burning can reinvigorate some species, such as Kangaroo Grass, to increase their flowering and seed production the following season.

Our Park Rangers will also use spot burning as a more precise tool to target specific annual weed species throughout Winter and Spring. This method controls annual weeds, such as Annual Veldt Grass, by preventing them from dropping seeds. This style of burning can be used as an alternative to herbicides and presents a lower risk to our local indigenous species.

*Local indigenous plants are native plants local to the Banyule area



Interested in volunteering?

You can get involved with the conservation of our bushland reserves by joining one of the many environmental friends groups which operate throughout Banyule.

Find your nearest one at banyule.vic.gov.au/friendsofgroup or scan the code.



Learn something new, at a house near you

Banyule's Neighbourhood Houses



For more information go to banyule.vic.gov.au/Neighbourhood or scan the QR code.

Contact Us

All enquiries

PO Box 94, Greensborough, VIC 3088
Phone 9490 4222
enquiries@banyule.vic.gov.au
banyule.vic.gov.au

Council Service Centres

Greensborough 1 Flintoff St
Ivanhoe 275 Upper Heidelberg Rd
Rosanna 72 Turnham Ave (currently closed)
COVID-19 restrictions may impact operations so please check our website for up-to-date information.
Our customer service staff can also assist you over the phone.

Hearing or speech impaired

Call us through the National Relay Service on 133 677 (TTY) or 1300 555 727 (ordinary handset) and contact 9490 4222.

Interpreter service

إذا كنتم بحاجة إلى مترجم يرجى الاتصال بالخط القومي للترجمة الهاتفية على الرقم 131 450 وطلب إيصالكم ببلدية بانويل على الرقم 9490 4222.

如果你需要一名翻译, 请打电话到国家电话翻译服务处 (TIS National) 131 450, 再转接到 Banyule 市政府 9490 4222

若你需要口譯員, 請致電 131 450 聯絡 TIS National, 要求他們為你致電 9490 4222 接通 Banyule 市政廳。

Ako vam je potreban tumač, molimo vas, nazovite TIS National na broj 131 450 i zatražite da vas se spoji sa Vijećim općine Banyule na broj 9490 4222.

Se hai bisogno di un interprete chiama TIS National al numero 131 450 e chiedi di essere messo in comunicazione con il Comune di Bayule al numero 9490 4222.

Αν χρειάζεστε διερμηνέα τηλεφωνήστε στην Εθνική Υπηρεσία Διερμηνέων Μεταφραστών στον αριθμό 131 450 και ζητήστε να σας συνδέσουν με τη Δημαρχία Banyule στο 9490 4222.

Ако ви треба преведувач ве молиме јавете се на TIS NATIONAL на 131 450 и замовете да ве поврзат со Banyule Council на 9490 4222.

Haddii aad u baahan tahay mutarjum wac khadka qaranka oo ah TIS 131 450 weydiina in lagugu xiro Degmada Banyule tel: 9490 4222.

Nếu cần thông dịch, xin gọi cho TIS Toàn Quốc qua số 131 450 rồi nhờ họ gọi cho Hội Đồng Thành Phố Banyule theo số 9490 4222 giúp quý vị.