

Banyule Banner

-
- 03 Banyule Citizen
of the Year
-
- 05 Aftermath of floods
-
- 12 The year in review

November/December 2022




Banyule
City Council

Mayor's Message

Mayor
Cr Peter Castaldo



Being elected Mayor of Banyule is a great honour. I am humbled by the trust placed in me by my fellow councillors and the Banyule community.

In my six years as a Banyule councillor, I have been inspired by the work of community volunteers and the passion of Banyule residents to make their community a better place. I am continually impressed by the diligence of Council's executive team and dedicated Council staff who deliver hundreds of Council services every day.

Strong and stable leadership

Banyule has a proud record of stable and responsible governance. I will work to maintain a collaborative Council that builds on what we have already achieved and keeps the interests of our community at the heart of every decision we make.

Meeting the challenges ahead

Delivering on the Community Vision and commitments in our Council Plan will be harder in the current economic climate and we want to make sure we get the most out of Council assets, using them efficiently and at full capacity. We know that cost-of-living pressures are a real concern and we will work to ensure no-one is left behind, while we continue to maintain the high standard of Council services our community expects and deserves.

A better future for all

When I hand over to a new mayor in November next year, I want to leave a community that celebrates our differences and in which everyone has a place. I want to be proud of making further progress on our climate action goals, increasing biodiversity and setting in place a new Urban Forest Strategy. I want us to be further along in our journey towards reconciliation with our Indigenous community. I want us to continue to use appropriate planning to meet the needs of our growing population while protecting the urban character and precious green spaces we love.

Community at the heart of everything we do


The COVID pandemic still has challenges for us, but I am hopeful we are entering better times when we can wholeheartedly celebrate what it means to be a community. I have no doubt the year ahead will be a challenging one, but with the wellbeing of our community at the heart of everything we do, we will achieve great things.

Stay in touch with us digitally


 Email newsletters
banyule.vic.gov.au/subscribe

  
[@BanyuleCouncil](https://www.facebook.com/BanyuleCouncil)


Have your say on important projects and local initiatives

 shaping.banyule.vic.gov.au

Council Meetings

 **Upcoming dates:**
5 December

 **From 7pm**

 **For location and up-to-date COVID restrictions, please check our website.**

For agendas, minutes, public question time and request to speak forms, visit banyule.vic.gov.au/CouncilMeetings

Banyule City Council is proud to acknowledge the Wurundjeri Woi-wurrung people as Traditional Custodians of the land and we pay respect to all Aboriginal and Torres Strait Islander Elders, past, present and emerging, who have resided in the area and have been an integral part of the region's history.

Our community is made up of diverse cultures, beliefs, abilities, bodies, sexualities, ages and genders. Council is committed to access, equity, participation and rights for everyone; principles which empower, foster harmony and increase the wellbeing of an inclusive community.



Uncle Charles Pakana - Banyule Citizen of the Year for 2022

A proud Aboriginal man of Tasmanian descent, Uncle Charles is the long-term committee chair of Barrbunin Beek Aboriginal Gathering Place in Heidelberg West and a member of Council's Reconciliation Action Plan Advisory Committee.

He recalled a feeling of homecoming when he and his mother moved to Banyule 14 years ago. "I knew I was coming back to somewhere really special because it is where my mum was born," he said.

Describing himself as "a proud Heidelberg West boy, through and through", Uncle Charles has been a tireless advocate for a strong and socially cohesive community that values and celebrates First Nations people and their culture. "One of the things I love about Heidelberg West, and Banyule as a whole, is how multicultural it is. The sense of the community is a great inspiration for me."

Since joining the committee at Barrbunin Beek seven years ago, Uncle Charles has helped the centre grow and take a more active role in Council affairs and in Banyule community life. Working with the "dream team" of Coordinator Blair Colwell and Council's First Nations Lead Zali Mifsud, he sees Barrbunin Beek as a growing force for unity.

"What we are building is a centre for the First Nations community and, importantly, for reconciliation in the wider community. Barrbunin Beek

is open to everybody – black, white, Christian, Muslim – because we are about sharing and reconciliation. We want people to come in; we want this to be a community hub," he said.

The second of three generations of journalists, Uncle Charles presented the Aboriginal current affairs program 'Connection Matters' on radio 3KND before launching Victorian Aboriginal News, which covers the news of First Nations people and issues through various media and projects. He has also worked with the First People's Assembly of Victoria and maintains a buoyant sense of hope for the future of reconciliation. "We are seeing the real beginnings of what self-determination means for our people. We know self-determination benefits the whole community. There's still a long way to go, but we are setting the foundation for younger people to carry on."

Admitting he's not afraid to "kick up a stink" now and then, Uncle Charles said he was proud of the work achieved in Banyule.

"I look at what Banyule is doing – the Gathering Place, Blair, Zali, the work of the reconciliation committee. I am really proud of the Council. I am so passionate about our community; it's just pride."

And he had a shout-out for community group Reconciliation Banyule: "They are just tireless in their efforts to support reconciliation. Without them, we would not be where we are."



Cr Elizabeth Nealy joined a demonstration with Shotokan Karate, just one of the local groups that is moving from Bellfield Community Centre to the Hub.

Bellfield Community Hub opens its doors

After many months watching the building go up, solar panels go in and gardens planted, it was a great joy to officially open the Bellfield Community Hub in October.

Banyule Citizen of the Year Uncle Charles Pakana opened proceedings with an Acknowledgement of Country, followed by the Member for Ivanhoe, Anthony Carbines MP, who spoke about the long-held vision for the Hub.

On a tour of the facility, councillors, staff and community members remarked on its many wonderful features, including allied health rooms and preschool.

They admired the electric car chargers and water harvesting tanks that are part of the Hub's commitment to being carbon neutral and achieving a 6-Star Green Star rating.

The Hub has now been open for more than a month, with children attending the new Audrey Brooks Preschool and Maternal and Child Health nurses meeting families. Aged Support Services will move in soon.

Principally funded by Council with additional funding from the Victorian Government, Bellfield Community Hub is a significant investment in the Bellfield Community

For details on what's coming to the Hub soon, **head to page 22.**



An extra 94 significant trees protected

This stately old river red gum in Viewbank, pictured above, is now protected for future generations, thanks to a new amendment to Banyule's planning scheme.

It is among 94 trees now included on the Environmental Significance Overlay (ESO4) after the Minister for Planning approved Banyule Planning Scheme Amendment C119. It brings the total number of significant trees and vegetation areas protected by the ESO4 in Banyule to 425.

As these trees and areas of vegetation play a special role in our neighbourhoods, it is important they are protected and considered in future development proposals. If a tree is covered by ESO4, a planning permit is needed to remove, destroy or lop the tree, and for any building and works within five metres of the tree canopy. Pruning trees for maintenance to improve health or appearance does not require a permit.

Trees and vegetation in Banyule may be deemed significant and in need of special protection if they meet one or more of our criteria, such as size and age of the tree, as well as botanical, historical or cultural significance.



Be part of Banyule's iconic festive celebration!


Carols by Candlelight 2022 returns to Greensborough War Memorial Park, where a huge crowd gathered last year to enjoy a night of community celebration for all ages.


As always, we've pulled together a dazzling line-up of entertainment for you, featuring:

- **Denis Walter**, one of Australia's most popular entertainers for more than 50 years
- **Kylie Auld**, lead singer of the ARIA-nominated band The Bamboos
- **Bobby Fox**, known for his role as Frankie Valli in Jersey Boys
- **The Australian Children's Choir**
- **The Diamond Valley Brass Band**
- **Elf, Frosty and Santa**

Bring along a chair or rug and a picnic, or purchase food and drinks from the onsite food trucks.

Grab your LED candle and songbook, and sing along.

 **Saturday 17 December,**
5pm – 9pm

 **Greensborough War Memorial Park**
McDowell St, Greensborough

 **Food trucks from 5pm, carols start at 7pm**

This event is proudly supported by



McGrath





Aftermath of floods

In Banyule, we are still feeling the effects of the mid-October storms and ongoing rainfall. We wanted to update you on how the wet weather has affected our grounds and open spaces.

Staying safe

We're asking locals to remain alert for hazards on shared trails, paths and parklands, especially along the river.

Please also look out for fallen trees and potentially damaged infrastructure.

Where there is damage, we may still be determining its extent and the timeline for repair.

Seen an issue while you're out and about? You can report it to Council via Customer Service, on **9490 4222**. We will respond or direct the matter to the correct authority.

For updates on facilities and areas, head to banyule.vic.gov.au/News-items/October-storms

Potholes

While driving, you might have noticed new potholes. Unfortunately, this is common during heavy and consistent rainfall.

When water seeps into cracks in a road's asphalt surface, it can cause it to weaken and split further.

Vehicle tyres then pump water through these cracks into the pavement materials underneath, compromising their integrity. These then soften and the surface breaks away, forming a pothole. In this way, even hairline cracks can develop into potholes.

You can report potholes by calling Customer Service or emailing enquiries@banyule.vic.gov.au.

We inspect, map and plan for the repair of potholes in compliance with Council's Road Management Plan.



Mowing and park maintenance

We've had a few people asking us why our maintenance teams haven't been mowing some sites in Banyule.

We know that the grass is getting longer than normal in some areas, however wet ground and mud have made it tricky for staff to mow safely and effectively.

In these conditions, heavy equipment is likely to slip, get bogged or make tyre ruts.

Thank you for your patience. We will restore our services as soon as possible so that you can continue to enjoy Banyule's open spaces.

Learn more about our mowing and maintenance plans at banyule.vic.gov.au/mowing



Creating more green spaces

Together with the Victorian Government, Council is creating a new pocket park and a shared pedestrian and vehicle zone on Waterdale Rd in the heart of Ivanhoe.

Construction of the pocket park is due to commence in early 2023. The park will provide an uplifting, fresh green space to an otherwise built-up urban area, giving the community a place for connection, socialising and relaxation.

The project will include significant landscaping, with the installation of canopy trees that will provide welcome shade during the warmer months. The shared zone will also make it safer for everyone to access the new area.

For more information go to shaping.banyule.vic.gov.au/WaterdaleRdParks

Order your 2023 Community Calendar

Take a closer look at nature in Banyule's 2023 Community Calendar.

Pick up a copy of the calendar at your local library or Council Service Centre from 8 December. Or have it delivered to your home; simply follow the instructions below.

Phone Customer Service on 9490 4222, scan the code or order online at banyule.vic.gov.au/calendar



Well done Banyule! Early updates from FOGO

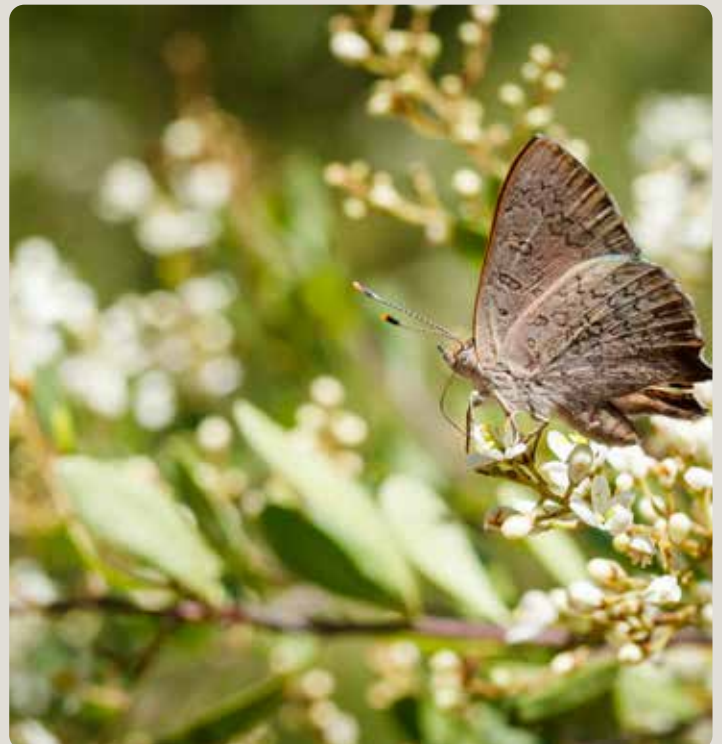
We now have 9 out of 10 households composting using the new FOGO (Food Organics, Garden Organics) bin.

In the first two months, approximately 987 tonnes of FOGO waste was diverted from landfill and composted instead, when compared with the same time in previous years. This is equivalent to the weight carried by 99 rubbish trucks.

However, there is still one issue: bags going in the bin.

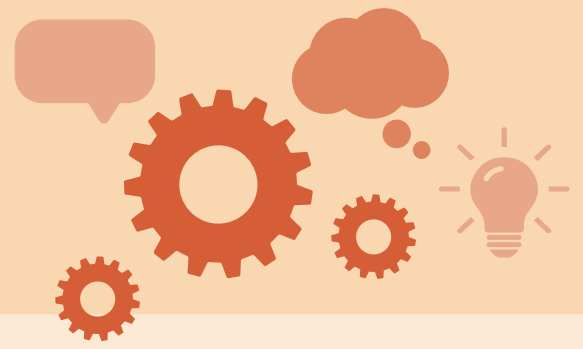
Please make sure you don't put any bags in the FOGO bin – not even ones labelled as biodegradable or compostable! You can line your kitchen caddy with newspaper or paper towel instead.

Keep up the great work!



Shaping Banyule

Get involved in local projects



Dogs and cats in public places – help us review the rules



Until 12 December, we're asking Banyule residents to help shape a new Public Order for cats and dogs in public places. We'd love to know if you see any opportunities for improvement.

The current rules state that dogs should be kept on a lead when they are on a Council road or footpath and when they are within five metres of a shared pathway, children's playground or barbeque area.

Dogs and cats are also not allowed to enter environmentally sensitive places. You have probably seen signs at parks and reserves around Banyule that tell you whether you can take your dog or cat in with you.

Your Council contact:

Justine Busuttil, Coordinator Municipal Laws
Email: justine.busuttil@banyule.vic.gov.au
Phone: 9490 4273

To find out more and share your thoughts, scan the code or go to shaping.banyule.vic.gov.au/PETS



Community Infrastructure Plan consultation

We have prepared a new draft Community Infrastructure Plan to manage the current and future needs of our changing community. Our community buildings enable the delivery of services and provide spaces for people to learn and connect.

The draft plan includes actions that identify how we can maximise the use of our community buildings and our investment priorities for the next 10 years.

Your Council contact:

Niki Efstratiou,
Community Infrastructure Planner
Email: niki.efstratiou@banyule.vic.gov.au
Phone: 9457 9811



To find out more and to keep up to date on this project, including dates for drop-in sessions, scan the code or go to shaping.banyule.vic.gov.au/CIP



Have your say and shape your community

We're committed to working with our community to build and strengthen relationships that inform and help make decisions.

To have your say on local projects and activities, sign up to Shaping Banyule at shaping.banyule.vic.gov.au or scan the code.



Environment Grant applications

Applications opening mid-January

Are you passionate about the environment, climate action and sustainability? Do you have a great idea for a project that supports Council's climate and environment goals but need some help getting your project off the ground?

Banyule's Environment Grants are designed to encourage community members to care for our local environment and to lead climate action, helping us make

progress towards Our Sustainable Environment goals as set out in the Banyule Council Plan.

Grants of up to \$10,000 are available for individuals and group projects that benefit the environment and community in Banyule.

For more details, go to banyule.vic.gov.au/EnviroGrants



Scan the code to see a video of St John's Riverside Community Garden.



Gardens and gazebos granted for St John's

Banyule's Environment Grants enabled St John's Riverside Community Garden in Heidelberg to build new garden beds for an influx of new members during COVID. It also contributed to a new gazebo that will help foster community connection and learning by creating a meeting place for workshops.

Community gardens provide mental and physical health benefits to members, contribute to food security and benefit the environment.

Cards of Kindness

The holidays can be a tough time for many. Here's one way to offer a friendly message of support.

In December, we invite you to anonymously write a greeting card for a person in the psychiatric unit at the Austin Hospital.

You can drop your card in the special post box at any branch of Yarra Plenty Regional Library until 18 December.

The cards will be delivered to the hospital by volunteers.

For more information, contact Alan Thompson (YPRL) on 9497 5780 or ivayprl@ypri.vic.gov.au

This program is run by Yarra Plenty Regional Library in partnership with Banyule Council.





Six months to influence final designs of North East Link

The Victorian Government has chosen its preferred tenderer to build the northern section of the North East Link from the M80 Ring Road to Watsonia.

The winning bidder has six months to refine designs, with the Victorian Government expected to announce final designs in April.

Council will meet with the winning bidder to demonstrate that the final design must include a lid over North East Link at Watsonia. Otherwise, the road will be up to 18 lanes wide in parts and will divide our community in half.

Council's proposal will:

- Create three hectares of green open space
- Provide better access from one side of Watsonia to the other
- Add a wider landscaping buffer between homes and roads
- Give space to plant at least 700 trees
- Provide an option for an underground carpark linked to an expanded Watsonia Village.
- Create the places and spaces that the community needs and deserves.

More than 1800 community members have already shared their support for Council's preferred design to put a lid on the link. To add your support, visit lidthelink.com

The successful tenderer chosen by the State is AMA, comprising Acciona Construction Australia Pty Ltd, AECOM Australia Pty Ltd and MACA Civil Pty Ltd.



Greensborough Rd realigned

Work is under way to realign Greensborough Rd (south of Watsonia) to allow more space to accommodate the North East Link tunnelling works.

Site preparation has started for a Tunnel Boring Machine (TBM) which is expected to be put in place in late 2023. The new road alignment will be in place from mid-November until the completion of the construction of the North East Link in 2027/28.

When tunnelling starts in 2024, the dirt will come to the surface on a continuous enclosed conveyor system. The conveyor will carry the dirt over Greensborough Road to a large enclosed shed at Winsor Reserve. Inside the shed, the dirt will be loaded onto covered trucks and moved offsite.

Construction of the shed will help manage truck and traffic movements and to keep locals safe, a new set of traffic lights will be installed just north of Torbay Street.

Site preparation work is also under way for the construction of the Lower Plenty Road traffic interchange and the tunnel ventilation structure.



Extending the rail tunnel

A new site compound has recently been established near Grimshaw St on the site of the old brickworks.

This site is being used to support early railway works to allow the North East Link to be built over the Hurstbridge rail line. The existing rail tunnel under Greensborough Hwy needs to be extended and site investigations and upgrades to the rail system are currently under way.

The compound will be used into the future to support the construction of the North East Link roadway and tunnel.

Margaret in charge: Four decades helping children cross the road



“It’s not a hard job, but it’s definitely a rewarding and responsible job.”

That’s how Margaret Weston describes her role as a Banyule school crossing supervisor.

For 40 years, Margaret has helped the children of Watsonia Heights Primary School get to and from school safely.

Her cheerful nature and genuine care for the school community have made Margaret somewhat of a local icon. As she manages the Henry St crossing in Greensborough she’s greeted by local motorists as they go by.

The parents and children are the highlight of her day. “They are always bright and smiling and happy to see me – this is the best perk of the job,” explained Margaret.

While the weather can sometimes play havoc in the day of a school crossing supervisor, Margaret said the uniform provided by Council keeps her dry and warm.

Margaret said she loves the job and wouldn’t change anything about it. It gives her the opportunity to stay active, help the community and meet new people.

School crossing supervisors needed

Do you enjoy working outdoors and meeting new people? Would you like some extra income and have free time before and after school?

We’re on the lookout for responsible and reliable people to join our team of casual school crossing supervisors in Banyule.

If this sounds like you, phone our **Customer Service Team on 9490 4222.**

Uniform and training provided.





Are you caring for someone who has dementia?

Come and catch up over a cuppa.

It’s your chance to meet other local carers, swap information, get and give ideas, share empathy and have a laugh. Sessions are casual. Join in when you can.

 **10am Wednesdays**

 **Healthlink café, 1 Flintoff Street Greensborough (at WaterMarc).**

 **Register at carers@banyule.vic.gov.au**



Better bike paths for Banyule

We know that our residents want safer, better cycling links across Banyule.

“ We would ride to school every day if we had better bike lanes and cycling facilities.

– local resident, Banyule Bicycle Strategy Survey 2021

”

Right now, cycling rates in Banyule are well below the Victorian average. According to the latest Census data, only 1.1% of Banyule residents travel to work by bicycle, compared with the Greater Melbourne average of 1.4%.

We believe that Banyule needs more than 600 kilometres of strategic cycling paths and bicycle trails to connect cyclists to major activity centres and destinations.

This will help encourage greater community health and wellbeing, as well as reduce greenhouse emissions and Council's carbon footprint.

That's why our advocacy team is campaigning for several big cycling infrastructure projects that we believe will make a big difference.

Here are a couple we're currently asking for:

Building the missing shared path link

The cycling path between Greensborough and Montmorency has been funded.

However, to fully realise the potential of this cycling route and to open up access right across the north of Banyule, we want to see this path extend from Montmorency to Eltham.

This will help:

- Improve access to schools, shopping centres, sports grounds and train stations.
- Connect the Plenty River Trail and the Diamond Creek Trail, improving access north to Hurstbridge and other green wedge trails, and boosting tourism.
- Provide safe access to RMIT University in Bundoora via the Metropolitan Ring Road path.
- Provide a vital strategic cycling link to the CBD for commuters from the north-eastern suburbs.

We're advocating for this project with Nillumbik Council.

Making cycling safer on the Northern Trail

“ My commute to (the) Austin Hospital takes me on beautiful bike paths until about 1-2km away, and then through treacherous heavy traffic, a huge safety concern. I expect more people would cycle (less traffic!) if only it were safer the whole way.

– Banyule resident, Banyule Bicycle Strategy Survey 2021

”

Council's preferred cycling route through our busy suburbs is along the rail corridor. Currently, a hybrid rail corridor and on-road cycling route is being built between Rosanna and Heidelberg railway stations.

However, to ensure the safest route for cyclists, Banyule is asking that the entire cycling path now be built along the rail corridor. Council is also advocating for a safe off-road cycling link within the Hurstbridge railway corridor that extends all the way from Watsonia to Ivanhoe.

A year in Banyule

From west to east, north to south, it's been a busy year across our city. Here are just some of the highlights.

Scan the QR code to watch the video.



Creating new places

In Gresswell Forest, we're working with Parks Victoria and Melbourne Water to remove pollutants from stormwater and improve the habitat for local wildlife. By redirecting the run-off from nearby houses and businesses to wetlands, we can slow the flow of stormwater and remove common pollutants, including litter, oils and fertiliser. On your next walk in the area, take a look at smart, sustainable design in action.



A new community centre

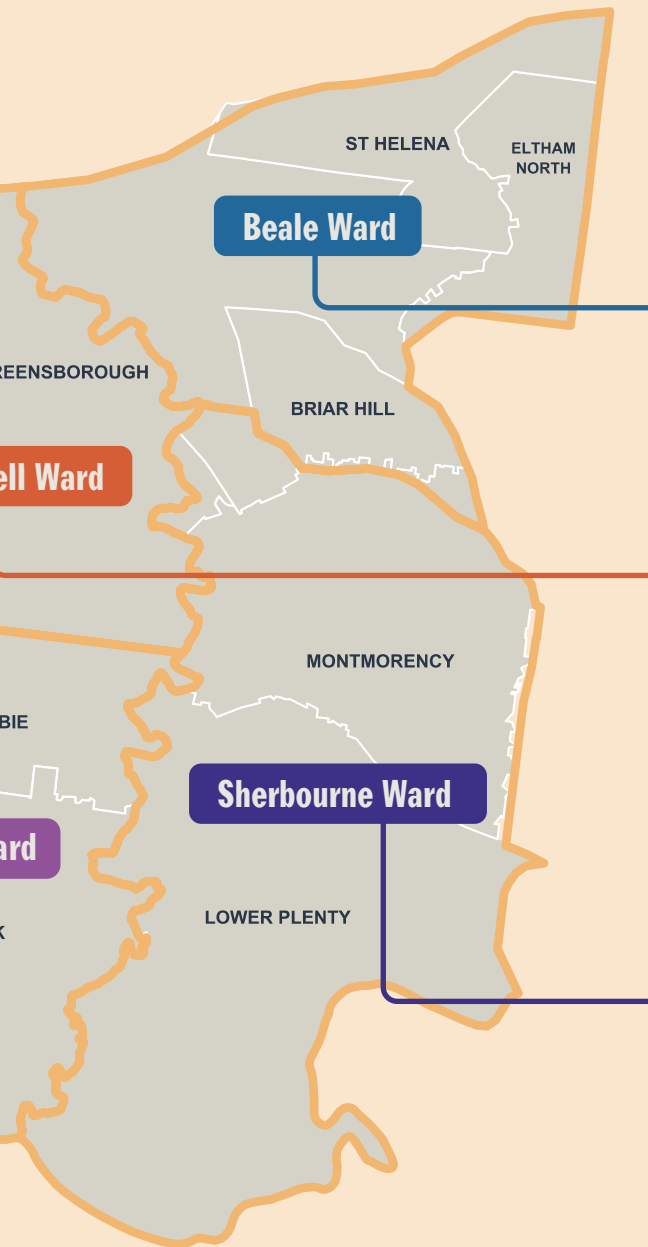
With meeting spaces, a Maternal and Child Health Centre, kinder, aged care services and a beautiful, productive garden, the new Bellfield Community Hub has something for everyone. Plus, it's a 6-Star Green-Star rated building. See you at the social enterprise café – coming soon. Read more on page 3.



Creativity shines

It's only been open since last year, but the Ivanhoe Library and Cultural Hub has had a big impact, even with the ins and outs of event planning around lockdowns! By June this year, the Hub had already held 18 exhibitions, hosted 18 studio residencies, put on 20 performances and events, and collaborated with more than 133 artists. For all the summer events, see page 17.





Beale Ward

Sherbourne Ward



Kicking off better facilities

The redevelopment of Partingtons Flat pavilion has been a big win for the local sports community, including Diamond Valley United Soccer Club. This facility now includes female-friendly change rooms, umpire rooms, extensions to the pavilion, new storage areas and improved access to the facilities.



Kinder ready

Children and staff have now enjoyed a full year in the newly refurbished Greensborough Maternal and Child Health Centre and Greensborough Preschool. They have loved the new kinder room and exciting playground space. In 2023, thanks to the renovations, the kinder will be expanding the number of places for 3-year-olds and 4-year-olds.



The new Were St takes shape

The much-loved shopping strip in Montmorency is getting an upgrade. The new village will be safer, greener and more accessible and there'll be more room to enjoy drinks and dining. Works are well under way, with lots of paving down, foundations laid for a new performance stage and greenery set to go in. Shop in Monty and check out the progress for yourself.



Extending outdoor dining

During lockdowns, we set up a number of temporary parklets and pop-up parks to expand outdoor dining options and create extra green space. Thanks to your feedback, these extensions have now become a permanent fixture, with six in Griffin Ward and more across Banyule. This summer, they're set to give businesses and neighbourhoods another boost.



Planning for the future

In September, Council approved a planning permit for the Rosanna Library redevelopment. This means we are one step closer to a facility that will cater for the growing needs of the community. Plans for the new hub include a much larger library as well as a maternal and child health centre and a toy library.



Greening our streets

It's been fantastic to see many new street trees pop up this year. Our Parks and Natural Environment team has planted 3000 of them, bringing the total number in Banyule to over 70,000. These trees are helping make Banyule carbon neutral by 2040.

Get on your bike in Banyule

The new year is a great time to embrace a healthy habit

Cycling offers many benefits, including improvements to cardiovascular health, mood and wellbeing. Plus, it's a sustainable and fun way to get around your neighbourhood. Read all about how we're advocating for more bike paths in Banyule, page 11.

Whether you're young or old, new to riding or want to refresh your skills, there's a Council bike course to get you moving.

One-on-one adult bike skills session

📅 Saturday 7 January

📍 Watsonia Library, Ibbottson St, Watsonia

These sessions give you the chance to build bike skills and confidence in a safe, supportive environment. Because each session is just you and the instructor, you will receive tailored advice to develop your riding skills. What would you like to improve on? Sessions are 45 mins and cost \$19.50 (\$15.50 concession). BYO bike and helmet.

Bookings essential
trybooking.com/908736



Bike skills vouchers

Giving a bike for Christmas? Why not pop some Learn to Ride skills session vouchers in the stocking!

Each voucher includes three hours of private lessons for just \$35 (\$19.50 concession). They are ideal for adults or children (aged 7+) who can't yet ride a bike or are beginners with basic skills.

Sessions can be scheduled at a time and location to suit you (subject to instructor availability).

Purchase vouchers here:
trybooking.com/978736



Mini Bikers program

📅 Tuesday 10 January

🕒 Session one: 9am – 9.30am
Session two: 9.30am – 10am

📍 Staff car park, Watsonia Library, Ibbottson St, Watsonia

Designed for children aged two to five years, our Mini Bikers program is all about introducing bike riding from a very young age. We use balance bikes and also some pedal bikes in a variety of different activities to get the little ones going. Children must be accompanied by an adult. Helmets provided, but children can bring their own.

Bookings open 9 December
trybooking.com/CDKBD



Back on the bike: Relearning the basics

📅 Sunday 22 January

🕒 9.30am – 11am

📍 Heidelberg, Warringal Parklands

We know you can feel a little rusty if you haven't ridden in a bit. This practical training session is perfect for adults wanting to improve skills and gain confidence on the bike.

In a traffic-free environment, participants will practise basic but essential bike control skills, including smooth starting and stopping, cornering, using gears and signalling.

Group size is limited to 4 participants.

Sessions are 90 mins and cost \$25.00 (\$14.50 concession). BYO bike and helmet.

Bookings essential.
trybooking.com/983959



Reducing your risk of fire

Now's the time to get organised and protect you and your property from fire.

Council's Municipal Fire Prevention Officer conducts inspections each year to identify fire risks within the municipality. It is extremely important that all property owners reduce hazards around their property and maintain their properties throughout the Fire Danger Period.

Fuel reduction is one of the most important precautions that you can undertake. Make sure you:

- Slash or mow grass around the home and outbuildings
- Remove tree limbs, branches, leaf litter and twigs from around your home
- Maintain a 20m fuel reduction zone around your home (greater if on a slope)
- Clear around trees and remove dead branches, prune lower limbs and cut back branches overhanging any roof
- Keep gutters and roofs clear of leaf litter, twigs and debris

It's also a good idea to stack firewood away from the house and, as always, check your smoke alarms regularly. Please note, no burning off is allowed in Banyule without a permit.



Seasonal conditions may result in regrowth of vegetation after the initial slashing or mowing. These requirements must be maintained throughout the Fire Danger Period. Check your property regularly, keeping in mind changing weather conditions, and put in place a maintenance schedule through to April.

If you need help with clearance work, arrange a local contractor to carry out the required work to ensure compliance.

For more fire prevention information: cfa.vic.gov.au or frv.vic.gov.au

Advocate for Banyule – how to play your part

Is there a local issue you're passionate about changing?

We want you to feel equipped to make a difference in your own neighbourhood.

Our advocacy team has put together a toolkit to help you implement campaigns of any size. Download it at banyule.vic.gov.au/Advocacy



Have yourself an eco little Christmas

Banyuletide greetings! Here are some of our tips for keeping things local and sustainable these holidays. Bonus, this approach can help keep costs down too.

Looking for a Christmas tree?

Why not purchase a potted tree from your local nursery. Trees such as *Picea pungens* and *Picea glauca* make great Christmas trees, as do Australian native trees such as a Woolly Bush and Australian pines. Re-pot the trees into larger pots and put in the backyard for future Christmas seasons.

Alternatively, purchase a cut tree from your nearest Scout group or local plantation to reduce transport mileage. The trees will sequester carbon during their lifespan to assist with offsetting emissions.

Once the holiday season has ended, the trees can be brought to the Banyule Waste Recovery Centre (for free) to be mulched with the FOGO waste.

When purchasing gifts, think about what they're made from

Choose gifts made from upcycled, biodegradable or 100% FSC (Forest Stewardship Council) certified materials. Consider buying secondhand or vintage items – they're better for the planet and your hip pocket!

Giving a local experience is also a great way to bring people together

and reduce demand on resources. Buy a ticket to a local music concert, show or event or a gift card to a local restaurant or cooking class.

Say no to food waste, yes to leftovers

Plan ahead and purchase only the food you need to reduce overconsumption and food waste. Buy from your local butcher and grocer to reduce transport mileage and support local.

If you have any leftovers, keep them fresh by using containers and wax wraps instead of clingwrap. Get creative and turn them into new meals (roast veggies, pies, patties, curries, smoothies), make stock from vegetable peelings and meat bones – or use your freezer for the food that won't last the distance.

Remember to FOGO

For unavoidable food waste, pop it in your FOGO bin or compost to add extra nutrients to your own garden. Remember, your FOGO bin can take bones, seafood and shells!

If you're after a present for the person who has everything, Banyule is selling Green cone composting systems at a discounted rate! Find out more at banyule.vic.gov.au/GreenCone



Santa, lollies and firetrucks – Christmas trifecta for Banyule kids

While many of us are impatient for summer to kick in, the children of Banyule will be hoping for a mild day on Sunday 18 December. The declaration of a Total Fire Ban is the only thing that will stop Santa from his annual tour of Greensborough, Monty and Eltham with the Eltham CFA.

With his reindeer resting up before their big night on Christmas Eve, Santa will hitch a ride in a fire truck with Eltham CFA volunteers for a tour of their patch, stopping at parks along the way to meet children and hand out bags of Christmas lollies.

Watch and listen for the lights and sirens as Santa arrives at the following places in Banyule on Sunday 18 December:

1.00pm – 1.50pm

Petrie Park, Montmorency

2.15pm – 2.35pm

Anthony Beale Reserve, St Helena

3.00pm – 3.20pm

Malcom Blair Reserve, Greensborough

Please note: In the event of a Total Fire Ban this event will be cancelled.

Banyule Children's Gift Appeal

For more than 20 years, the generous Banyule community has donated gifts and money to local children and families experiencing hardship over the holidays. This year, we'd love your support again.

Until 24 December, we will be collecting new gifts and toys, as well as financial donations.

To find out how you can help, head to banyule.vic.gov.au/GiftAppeal or scan this code



Ivanhoe Library & Cultural Hub

Events & activities

📍 275 Upper Heidelberg Road, Ivanhoe

All events at Ivanhoe Library & Cultural Hub are free, but please check the website for updates prior to visiting or contact us if you have any questions.

🌐 banyule.vic.gov.au/ILCH

✉️ arts@banyule.vic.gov.au

📞 9490 4222



#artnow

Until 4 December 2022

📅 All Abilities Party: 28 November, 5 - 7pm

📍 Art Gallery 275

#artnow showcases new work made by local young people through various Banyule youth arts programs in 2022.

To close the exhibition and celebrate International Day of People with Disability, we will be throwing an All Abilities Party. This event is free and open to all.

More at banyule.vic.gov.au/artnow

Image credit: Artwork by Lucy Rowe



LEGO Christmas windows

📅 9 December – 8 January

📍 Art Gallery 275 window display, ILCH foyer

Each year, we invite the Melbourne LEGO User Group (MUGs) to create a Christmas LEGO display for us.

This group includes the best and brightest LEGO fans, designers and friends from across Victoria – and even has several Lego Masters contestants!

Visit these holidays and wonder at their amazing creations.

banyule.vic.gov.au/ILCH

Image Credit: Lego Christmas Display @ ILCH, December 2021



Banyule 100

📅 9 December – 15 January

📍 Loft 275

Join us as we celebrate the Banyule 100. Since 2011, this Youth Services project has shone a light on young people in our community and those who support them.

One hundred profiles have now been captured by young people. To celebrate this milestone, the Youth Services team is showcasing these inspirational stories.

banyule.vic.gov.au/exhibitions

banyule100.com

Image Credit: collage of images from the Banyule 100 project



The Gender Garden

📅 20 January – 12 February 2023

🕒 Opening night: 3 February, 6 - 8pm

📍 Loft 275

Part of the official program for Midsumma Festival 2023, this exhibition of earthly delights by transgender and gender diverse artists is curated by Emerson Zandegu.

Step into the Garden; lush, beautiful, dark and deep. Here, flowers bloom in colours you've never seen before. Strange creatures take respite in the shade of ancient trees. You feel the earth's heartbeat under your feet, beneath the rich soil.

What wonders await you?

Image credit: image by Niamh Noble and Emerson Zandegu



Small works, big stories

Jodi Wiley, Artist-in-Residence

📅 21 November – 11 December

📍 Mungga Artist Studio 1

Local artist Jodi Wiley is interested in the themes of nostalgia, memory, place and the way we make meaning from personal narratives. She works primarily in acrylic and watercolour.

During her residency, Jodi will be exploring what books mean to people through miniature paintings. Please make sure to visit Jodi during this time and tell her about a favourite book, which could end up as an art work!

banyule.vic.gov.au/ILCH



Our Nature in Focus exhibition

📅 From 5 December

📍 Urban Lightbox Gallery
Midway Lane and
Cambridge Arcade
Heidelberg West

Banyule's Urban Lightbox Gallery program is a series of rotating art exhibitions in laneways in Heidelberg West.

Our Nature in Focus is an exhibition of nature photography by local residents and artists Sandy Dunne, Vladimir Esipov, Glenn Hilling and Mahmoud Mortazav.

The works were created from two days of workshops with naturalist and photographer Chris Cook and feature images taken at local parks, including Rosanna Parklands and Banyule Flats.

More info at
banyule.vic.gov.au/arts

First Nations job expo

Together we're helping create job opportunities

The First Nations Jobs Fair was held on Wednesday 5 October as a collaborative event between Banyule, Darebin and Whittlesea Councils and it was a huge success.

First Nations community members attended to meet with employers, recruitment agencies, education and training providers and support services.

After two years without events like this, it was fantastic to see everyone come together to share opportunities for mob.

Feedback from community elders and leaders, stallholders and attendees was extremely positive. And the great news is we've heard about a number of job offers and interviews that have been arranged as a result of this event.



Free cinema under the sky

We'd love you to join us once again for our outdoor movie program. No bookings required. Bring a picnic rug and enjoy.

📅 **Saturday, January 21**

📍 Macleod Village, Aberdeen Road, Macleod

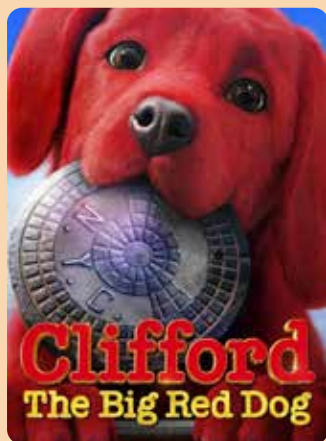
4pm-6.30pm

PAW Patrol: The Movie
(Rated G)



6.30pm-8.30pm

Clifford the Big Red Dog
(Rated PG)



📅 **Saturday January 28**

📍 Anthony Beale Reserve, St Helena Road, St Helena

4pm-6.30pm

Spirited Untamed: The Movie (Rated G)



6.30pm-8.30pm

Minions: The Rise of Gru
(Rated PG)



Connecting kids with nature

Ivanhoe Library and Cultural Hub,
275 Upper Heidelberg Road, Ivanhoe



Bugs Galore

📅 **23 January, sessions at 10am and 11.30am**

Explore the interesting, fascinating and strange world of invertebrates. Discover where they live, what they eat, how they can change, how they protect themselves and how we can protect them.

Children will have the chance to meet bugs from many different habitats, including stick insects and a tarantula!

Children must be accompanied by an adult.
Bookings open on 9 December:
trybooking.com/CDLJO



Animals Galore

📅 **18 January, sessions at 10am and 11.30am**

Children will have fun discovering the diversity and uniqueness of animals that are found in the Australian bush. They will have the chance to meet and learn about our furry, feathery and scaly friends.

Take a closer look at possums, frogs, lizards, pythons and more!

Children must be accompanied by an adult.
Bookings open 9 December:
trybooking.com/CDLKL



Ward Rounds



Cr Peter Castaldo
Griffin Ward

peter.castaldo@banyule.vic.gov.au
0466 502 698

Many residents and visitors to Banyule are attracted by our amazing parks and bushlands, but did you know we have more than 70,000 street trees? Council recently adopted a planning scheme amendment that will protect a greater number of significant trees, which now number 425 throughout Banyule.

We're developing a new Urban Forest Strategy to better protect and enhance the trees and forests in urban areas and we want your feedback on the draft strategy. Jump online at shaping.banyule.vic.gov.au/UrbanForest to discover how our urban forest has changed and how we are planning to make it better.



Cr Alison Champion
Sherbourne Ward

alison.champion@banyule.vic.gov.au
0466 486 593

Thanks to everyone for their patience as the new Were St takes shape.

Works will be completed in the new year – and there's already a lot we can see.

Much of the paving has been put in and the walls and roof structure of the accessible toilet block are done. We've started preparations to upgrade and

add accessible car parks that allow more space to get in and out of vehicles.

Throughout the village, we're starting to put top soil, compost and mulch in garden beds, ready for plants to go in. More street furniture is also on its way.

Happy holidays all and thank you for another wonderful year in Sherbourne.



Cr Fiona Mitsinikos
Hawdon Ward

fiona.mitsinikos@banyule.vic.gov.au
0434 891 077

One of the privileges of serving as a councillor is attending Council citizenship ceremonies and seeing the pride and delight on the faces of Australia's newest citizens. This year, Council has held four in-person ceremonies and a number of online ceremonies for a total number of 603 new Australian citizens. Banyule's

Citizen of the Year Uncle Charles Pakana spoke at the November ceremony, pictured. I want to congratulate and welcome everyone who has taken up citizenship this year. Each of you brings new vibrancy to our community just by choosing to be part of it. I wish you and your families a very happy festive season.





Cr Elizabeth Nealy
Beale Ward

elizabeth.nealy@banyule.vic.gov.au
0435 243 598

It has been a pleasure to serve as your Mayor in 2022. I'd like to share a big thank you to the Beale community for your support. I've enjoyed meeting so many of you in person, at online forums and at community events.

I'm focused on the future and am looking forward to continuing to work

on representing the residents of Beale as your Councillor. I am particularly passionate about creating a space for the community to come together at Anthony Beale Reserve. I'll share more information and details with you once this project kicks off.

I wish you all a safe, happy holiday season. I hope to see you at the Carols!



Cr Mark Di Pasquale
Bakewell Ward

mark.dipasquale@banyule.vic.gov.au
0481 002 299

I would like to wish your family Merry Christmas. This time of year can be difficult for many. For those who find themselves alone, our community is supportive and ready to help. All are welcome at the Community Christmas Lunch held by Diamond Creek Uniting Church. You can pick up a hamper from the church or have lunch delivered to your home on Christmas Day.

If you or someone you know could use a friendly visit on Christmas Day, contact Graham on **0419 361 487** or email gford@bigpond.net.au

Don't forget Greensborough Plaza is the place for Christmas cheer and community connection. Hear school choirs singing carols and visit Santa!



Cr Alida McKern
Chelsworth Ward

alida.mckern@banyule.vic.gov.au
0435 316 318

Did you know nearly half the residents of Banyule don't eat the recommended daily amount of fruit and vegetables? Like many communities in Australia, we also have high rates of obesity and chronic health issues. That's why Council has begun work on an Urban Food Strategy. I'm delighted to chair the community working group, pictured. Our vision is a healthy,

sustainable, delicious and fair food system for Banyule. Council wants your ideas to make this happen! We're hosting 'kitchen table conversations' where you can have your say in a local informal setting over a cuppa! Contact me to join my kitchen table chat in December. More info at shaping.banyule.vic.gov.au/UrbanFood



Ward Rounds



Cr Peter Dimarelos
Olympia Ward

peter.dimarelos@banyule.vic.gov.au
0434 891 065

There's a lot happening already at the Bellfield Community Hub. Children and families are loving the new kindergarten space which has been running since early October. Next year, the capacity will increase from 44 children per day to 66 children per day.

If you're looking for a time to check out the Hub, we'll be holding an Open Day for

the public in early 2023, so stay tuned.

If you would like a tour earlier, please email Shop48Enquiries@banyule.vic.gov.au

The Hub's social enterprise café run by For Change Co. is due to open in late November/early December. Four community rooms will be available to hire from late 2022/early 2023.



Cr Rick Garotti
Grimshaw Ward

rick.garotti@banyule.vic.gov.au
0490 014 965

It was great to see the Tennis Victoria Premier League back at Bundoora Tennis Club! On Friday 4 November and Sunday 6 November, some of Victoria's best tennis players, along with the Bundoora RMIT Teams, hit the courts at NJ Telfer Reserve.

For a number of years now, the Bundoora Tennis Club has participated in the men's

competition. However, this year's event proved to be bigger and better with both women and men participating in the competition. The Victoria Premier League is the pinnacle of competition tennis in Victoria and it was a privilege to hold this event in Grimshaw ward.

Wishing the Grimshaw community happy holidays and a safe new year.



Cr Tom Melican
Ibbott Ward

tom.melican@banyule.vic.gov.au
0413 043 015

Congratulations to the volunteers at the DVCS Op Shop, who are celebrating 10 years in the Macleod community. The Op Shop in Aberdeen St is run by Diamond Valley Community Support Inc and all profits go back into the local community. Shop manager Carmel Crane said dedicated volunteers and the support of Macleod locals had

enabled the shop to contribute more than \$500,000 to local relief programs in its decade of operation. What an amazing achievement! "Our volunteers come to work with big smiles on their faces each shift and have helped form a great little family," she said. DVCS Op Shop is open weekdays from 9.30am - 4.30pm and Saturday from 9.30am - 1.30pm.





Bushland diaries

Thank you to our volunteers

With planting season just about over, our Banyule Park Rangers would like to thank all of the volunteers who have helped build habitat and enhance biodiversity across Banyule’s bushland reserves this year.

A total of 5,963 local indigenous plants comprising 80 different species were planted with the assistance of volunteers, mostly over weekends.

Our park rangers appreciate and value the efforts and dedication of our volunteers and the community.

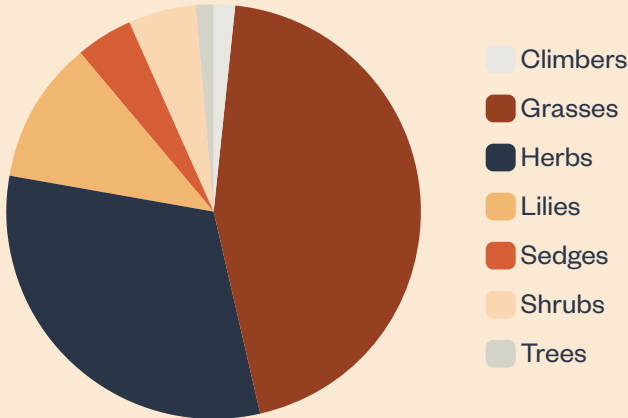
What we’ve achieved with the help of volunteers

This year, volunteers have helped to enhance a range of ecosystems, including our local wetlands, grasslands and woodlands by planting local indigenous species of the below vegetation forms:

Climbers	108
Grasses	2666
Herbs	1865
Lilies	666
Sedges	270
Shrubs	314
Trees	74
Total	5963



2022 Volunteer-assisted planting



Interested in volunteering?

Help us conserve bushland reserves by joining a friends of group. Find your nearest one at banyule.vic.gov.au/friendsofgroup



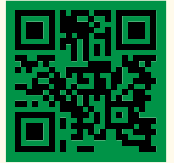
REDISCOVER LOCAL.

SUPPORT THE BUSINESSES THAT SUPPORT YOUR COMMUNITY.

There's never been a better time to rediscover
what's great in your local community.

Visit RediscoverLocal.com.au and search our online directory for a business near you.

Get social
with us on
Facebook



Instagram



Contact Us

All enquiries

PO Box 94, Greensborough, VIC 3088
Phone 9490 4222
enquiries@banyule.vic.gov.au
banyule.vic.gov.au

Council Service Centres

Greensborough 1 Flintoff St
Ivanhoe 275 Upper Heidelberg Rd
Rosanna 72 Turnham Ave (currently closed)
COVID-19 restrictions may impact
operations so please check our
website for up-to-date information.
Our customer service staff can
also assist you over the phone.

Hearing or speech impaired

Call us through the National Relay
Service on 133 677 (TTY) or
1300 555 727 (ordinary handset)
and contact 9490 4222.

Interpreter service

إذا كنتم بحاجة إلى مترجم يرجى الاتصال بالخط
القومي للترجمة الهاتفية على الرقم
131 450 وطلب إيصالكم ببلدية بانيلول على
الرقم 9490 4222.

如果你需要一名翻译, 请打电
话到国家电话翻译服务处
(TIS National) 131 450, 再转接到
Banyule市政府9490 4222

若你需要口譯員, 請致電
131 450聯絡TIS National,
要求他們為你致電9490 4222
接通Banyule市政廳。

Ako vam je potreban tumač,
molimo vas, nazovite TIS
National na broj 131 450 i
zatražite da vas se spoji sa
Vijećim općine Banyule na
broj 9490 4222.

Se hai bisogno di un interprete
chiama TIS National al numero
131 450 e chiedi di essere messo
in comunicazione con il Comune
di Bayule al numero 9490 4222.

Αν χρειάζεστε διερμηνέα
τηλεφωνήστε στην Εθνική
Υπηρεσία Διερμηνέων
Μεταφραστών στον αριθμό
131 450 και ζητήστε να σας
συνδέσουν με τη Δημαρχία
Banyule στο 9490 4222.

Ако ви треба преведувач
ве молиме јавете се на
TIS NATIONAL на 131 450 и
замолете да ве поврзат со
Banyule Council на 9490 4222.

Haddii aad u baahan tahay
mutarjum wac khadka qaranka
oo ah TIS 131 450 weydiina in
lagugu xiro Degmada Banyule
tel: 9490 4222.

Nếu cần thông dịch, xin gọi cho
TIS Toàn Quốc qua số
131 450 rồi nhờ họ gọi cho
Hội Đồng Thành Phố Banyule
theo số 9490 4222 giúp quý vị.