



Banyule Environment Strategy

03

*protecting and enhancing
our local environment and
creating a sustainable City*

Contents

BACKGROUND	4
ENVIRONMENT STRATEGY SUMMARY	6
THE NATURAL ENVIRONMENT	7
1. Protecting flora and fauna	7
2. Enhancing habitat	8
3. Waterways and wetlands	9
4. Parks and reserves	10
THE BUILT ENVIRONMENT, LANDSCAPE AND HERITAGE	11
5. Landscape amenity	11
6. Heritage places	12
7. Building design and infrastructure	13
SUSTAINABILITY	
8. Ensuring a sustainable future	14
RESOURCES, WASTE AND POLLUTION	15
9. Conserving resources	15
10. Minimising waste	16
11. Controlling pollution	17
COMMUNITY AWARENESS AND INVOLVEMENT	18
12. Promoting our environment	18
13. Supporting community involvement	19
IMPLEMENTING THE ENVIRONMENT STRATEGY	20
14. Integrated approach	20
15. Monitoring progress	21
16. Reviewing the strategy	22
FURTHER REFERENCES	23
HOW TO GET INVOLVED	26
DETAILED ACTION PLAN	28
Responsible Officers / Organisations for Implementation of the Action Plan in the Environment Strategy 2003	28
Action Plan 2003	30

Background

Banyule's environment has many attributes which present our locality as a desirable place for our community to live and work within. It is an urban municipality located to the north-east of Melbourne which incorporates a diverse range of environmental assets. The Banyule City municipality has a population of approximately 114,000 people and an area of 63 square kilometres.

Our natural environment includes valuable features such as bushland, waterways and parklands which support a diversity of plants and wildlife and offer a range of recreational opportunities. Our built environment incorporates landscape features offering pleasant surroundings while also providing facilities appropriate for the needs of our community.

Banyule faces many of the environmental and sustainability issues typical of urban municipalities, such as the impacts of development, traffic and pollution, and also has special needs for the protection of its unique environmental assets.

Banyule Council recognises the values of our local environment and provides commitment towards its enhancement. Of recent years the issues of water conservation, biodiversity protection, greenhouse gas abatement and sustainability have become of major interest to the whole society.

The following extracts from the Banyule City Plan 2003-2006 reveal the thrust of our environmental management

“Manage the natural and built environment to ensure its diversity and well-being for present and future generations.

Our role is to develop and deliver environmental best practice in partnership with the community so that:

- natural and built environments are continually improved
- species, habitats and areas of significance are protected
- regional and global responsibilities are recognised
- community health and well-being is enhanced.

We are committed to encouraging the efficient and sustainable use of resources while minimising waste and pollution.

We will:

- Protect, maintain and enhance indigenous flora, fauna and wildlife habitat.
- Protect and enhance our waterways, wetlands, parks and reserves.
- Protect, maintain and enhance Banyule's heritage.
- Encourage development that is sympathetic to the environment and community needs.
- Develop and deliver sensitive and effective systems for monitoring the environment and controlling pollution.
- Encourage the development of an integrated transport system that anticipates local and regional needs.
- Continue to provide best practice environmental and waste management services.
- Protect the valued elements of our existing neighbourhood character.
- Ensure that Banyule's physical assets are sustainably managed for the overall benefit of the community.

Council produced its first Environment Policy and Strategy in 1997 and has had considerable success with its implementation, as revealed in the State of the Environment Reports produced annually since 2000. It was a requirement of the original Strategy that it be reviewed on a regular basis and this strategy is the product of that review. Its development incorporates reviews undertaken by staff, the Banyule Environment Advisory Committee, and by the community at a range of forums over the last three years. It has taken into consideration recent environmental strategies and legislation developed by the Federal and State governments. It also incorporates the experience and knowledge gained by other councils, industry and research bodies to ensure best practice and the most efficient use of limited resources.

Overall, the thrust of the original strategy was very much on track, so there is little change to the key actions identified here. There is a greater emphasis on sustainability in response to the increased community and corporate engagement with this concept. There has also been a rationalisation of the organisation of the strategy and the removal of some repetition.

There is somewhat more change in the detailed actions provided in the second part of the strategy. There are some 16 new actions and a further 59 actions have been modified to varying degrees.

Reference to Council's State of the Environment Report 2003 reveals that 87% of the actions developed for the Environment Policy and Strategy 1997 are completed or are progressing well and on time. This reveals Council's and the community's commitment to our local and global environment.

The *Banyule Environment Strategy 2003* establishes an up to date focus for ensuring a coordinated approach in addressing environmental issues ranging from the local to the global and in identifying opportunities for enhancing the character of our local environment.

This strategy was adopted by council on September 22nd 2003.



Environment Strategy Summary

Protecting and enhancing our local environment and creating a sustainable City

THE NATURAL ENVIRONMENT

Protecting flora and fauna

- to ensure the diversity of Banyule's indigenous flora and fauna is conserved

Enhancing habitat

- to enhance Banyule's natural environment as habitat for indigenous wildlife and provide for its ecological sustainability

Waterways and wetlands

- to recognise the value of waterways and wetlands as major assets of Banyule's environment and to protect and enhance their natural amenity

Parks and reserves

- to manage Banyule's parks and reserves as major assets of our community and for the benefit of our natural environment

THE BUILT ENVIRONMENT, LANDSCAPE AND HERITAGE

Landscape amenity

- to recognise the contribution of vegetation cover to Banyule's environment and to protect and enhance the amenity of our diverse landscape values

Heritage places

- to identify and protect Banyule's heritage and recognise and encourage links between that heritage and the environment

Building design and infrastructure

- to encourage development within Banyule that is sustainable, sympathetic with our environment and consistent with the needs of our community

SUSTAINABILITY

Ensuring a sustainable future

- to plan for the environmental, social and economic sustainability of Banyule

RESOURCES, WASTE AND POLLUTION

Conserving resources

- to reduce the amount of resources utilised within Banyule and to encourage the efficient and sustainable use of the resources that are used

Minimising waste

- to prevent the unnecessary production of waste within Banyule

Controlling pollution

- to minimise the impacts of pollution on Banyule's environment

COMMUNITY AWARENESS AND INVOLVEMENT

Promoting our environment

- to increase awareness of the values of Banyule's environment and of requirements for its protection and enhancement

Supporting community involvement

- to provide support and create opportunities for community involvement in protecting and enhancing Banyule's environment

IMPLEMENTING THE ENVIRONMENT STRATEGY

Integrated approach

- to develop and facilitate an integrated approach towards managing Banyule's environment

Monitoring progress

- to monitor the progress of Banyule's Environment Strategy and be accountable for its implementation

Reviewing the strategy

- to review Banyule's Environment Strategy in accordance with changes in priorities of our environment and the attitudes of our community

The Natural Environment

I. Protecting flora and fauna

Banyule's natural environment supports a diverse range of indigenous, or local native, plants and animals. Their natural habitats include forests, woodlands and wetlands in river valleys and on plains and bushland extending over undulating hills.

Some of the most significant flora includes a variety of rare herbs, lilies and grasses in bushland areas, orchids such as the Emerald Greenhood, very old specimens of River Red Gum, and rare trees such as the Studley Park Gum. Significant fauna includes breeding waterbirds and frogs in our wetlands, rare visiting birds such as the Swift Parrot and Regent Honeyeater, and colonies of the Eltham Copper Butterfly.

The local survival of a number of indigenous species has become threatened over time through urban development and alterations in natural habitat. Animals which formerly would have been common in the area, such as kangaroos, wombats, sugar gliders, platypus and a number of forest birds, have become locally rare. The same is true for a large number of understorey plants, with formerly common species such as Nodding Greenhoods, Chocolate Lilies and Grass Trigger-plants, now rare within Banyule.

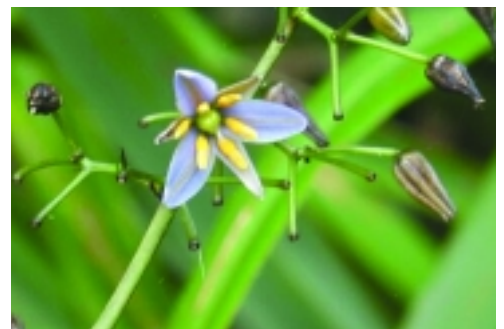
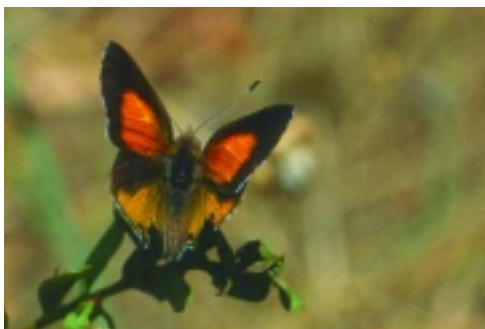
The clearing and fragmentation of natural habitat with development, impacts of introduced plants and animals, prevention of natural regeneration of indigenous vegetation, and specific habitat requirements such as the availability of tree hollows for birds and possums, are all issues which have implications for the future conservation of our biodiversity.

OBJECTIVE

to ensure the diversity of Banyule's indigenous flora and fauna is conserved

KEY ACTIONS

- 1.1** maintain inventories of local flora and fauna and monitor the conservation status of indigenous species and habitats
- 1.2** prevent local extinctions through the development and implementation of management programs for rare or threatened flora and fauna and for key areas of natural habitat
- 1.3** implement practices that ensure threats to indigenous flora and fauna are identified and the impacts of proposed developments are appropriately assessed
- 1.4** develop and implement programs to control the impact of introduced plants and animals on indigenous flora and fauna
- 1.5** undertake and encourage further research into the management of indigenous flora and fauna and threats to their survival



2. Enhancing habitat

A number of important areas of natural habitat for plants and animals are located within Banyule. They particularly include the indigenous vegetation along our waterways, bushland reserves and a substantial part of the Simpson Army Barracks.

Remnants of indigenous vegetation are also scattered throughout the municipality. They continue to play a vital role as habitat in the survival of our native wildlife, however, in many cases these remnants have been reduced to individual trees or small stands of trees with little or no understorey vegetation or other features of habitat value.

The rehabilitation and enhancement of remnant habitats is required to ensure the ongoing ecological sustainability of our natural environment. The creation of opportunities for the natural regeneration of indigenous vegetation is of particular importance.

Much restoration work has already been undertaken by Council and the community in the re-establishment of vegetation along our waterways and within reserves. The process is ongoing, with techniques continually being refined on how to protect and restore natural habitats. It is important to ensure opportunities for using these techniques on both public and private land are taken wherever possible for the benefit of our wildlife.

One particular requirement for ensuring the sustainability of our natural environment is the need for the provision of links between areas of natural habitat to allow for the movement and dispersal of animals and plants. These habitat links, or wildlife corridors, need to be strategically located to encompass a range of habitat types and ensure that areas of natural habitat do not become isolated.

Many of the actions for protection of species and habitats in the previous section are also relevant here and vice versa.



OBJECTIVE

to enhance Banyule's natural environment as habitat for indigenous wildlife and provide for its ecological sustainability

KEY ACTIONS

- 2.1** implement programs for the rehabilitation and enhancement of degraded natural habitats
- 2.2** implement programs for the restoration and enhancement of strategic wildlife corridors linking areas of natural habitat
- 2.3** pursue procedures and incentives for the retention and enhancement of remnant habitat on private and public land
- 2.4** identify priorities and implement practices for the re-establishment of depleted habitats



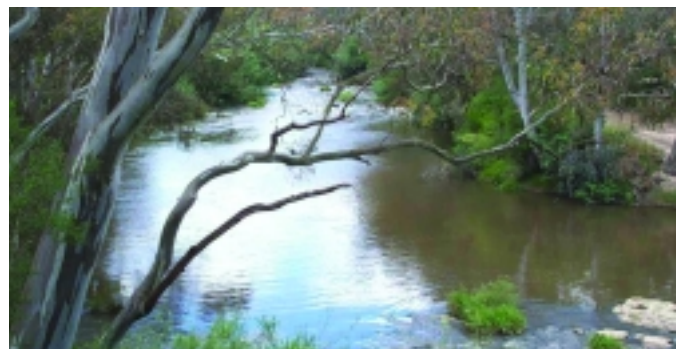
3. Waterways and Wetlands

Waterways and wetlands are features of Banyule's natural environment for our community to enjoy and wildlife to live in. They form important components of the Yarra Catchment. The Yarra River, Plenty River and Darebin Creek and the parklands along them provide almost continuous corridors of vegetation linking with larger areas of natural habitat to the north and east. Many bird species in particular utilise these corridors to visit our local area. Smaller waterways such as Salt Creek and Banyule Creek offer benefits as habitat and corridors for wildlife locally.

The trails which follow our waterways provide important recreational and educational opportunities for our community and a feeling of remoteness while only a short distance from a major city.

Issues relevant to the management of our waterways include the need to provide adequate buffers from development to protect their values and the rehabilitation of the natural habitats which occur along them. The control of weeds which readily invade and spread in waterway environments requires ongoing management.

Wetlands are key components of flood plain areas, playing a vital role in the natural ecosystems associated with waterways. The network of wetlands and billabongs along the Yarra River in particular provide important feeding and breeding habitat for a diverse range of wildlife and support a variety of aquatic vegetation. Artificial wetlands can also play an important role in improving the quality of water from urban areas while enhancing our natural environment.



OBJECTIVE

to recognise the value of waterways and wetlands as major assets of Banyule's environment and to protect and enhance their natural amenity

KEY ACTIONS

- 3.1** implement and monitor the effectiveness of planning procedures which protect and enhance the natural values and amenity of streamside environments and provide a buffer to the built environment
- 3.2** develop trails and interpretive signage which improve accessibility and understanding of the values of waterways and wetlands
- 3.3** develop and implement programs for the control of weeds and re-establishment of the indigenous vegetation of waterways and wetlands
- 3.4** create and take opportunities to improve the environmental values and continuity of reserves and trails along waterways
- 3.5** create and take opportunities for the establishment of wetlands for the improvement of water quality and as habitat for wildlife

4. Parks and Reserves

The amount and quality of open space provided in Banyule's parks and reserves allow our community to pursue a diverse range of recreational interests while also providing important refuges for our plants and animals. For some indigenous species recorded within Banyule, their only remaining habitat is located within parks and reserves.

The reserves along our roadsides, waterways and railway also play an important role in enhancing the quality of our natural environment, particularly in protecting habitat remnants, providing a continuity of vegetation cover; and allowing for links between areas of natural habitat both locally and in a regional context.

Parks and reserves offer opportunities to achieve ecological sustainability through the appropriate management of remnant habitats and creation of additional habitat areas, while also meeting the recreational needs of our community and providing an important educational resource.



OBJECTIVE

to manage Banyule's parks and reserves as major assets of our community and for the benefit of our natural environment

KEY ACTIONS

- 4.1** develop and implement management plans for the protection and enhancement of natural values within parks and reserves and integration with recreational uses
- 4.2** develop and implement management practices which ensure the ecological sustainability of indigenous vegetation and natural habitat within parks and reserves
- 4.3** adopt a policy against the planting of environmental weed species within parks and reserves as an example to the community
- 4.4** ensure staff and contractors operating within parks and reserves are aware of environmental management issues and appropriately trained in management of the natural environment
- 4.5** create and take opportunities for the establishment and designation of new reserves for the protection and enhancement of the natural environment and for the linking or extension of existing reserves

The Built Environment, Landscape and Heritage

5. Landscape Amenity

Banyule's landscapes are characterised by a diversity of landforms and vegetation. Established urban areas have been planted with a variety of exotic and native vegetation which soften the impact of our built environment and include majestic streetscapes. Some of the more recently developed areas retain a good cover of indigenous trees which particularly enhance the natural appearance of our undulating hills, while locations in the vicinity of the Yarra's flood plain retain a rural character. The vegetation which characterises these landscapes includes many specimens of horticultural, heritage or environmental significance.

It is increasingly recognised that the planting of indigenous vegetation is of multiple benefit because these plants are generally adapted to local soil and climatic conditions and generally survive better with much less water and fertiliser than exotic species. They provide critical habitat for much of our native wildlife and their planting assists in the long term conservation of the plant species concerned. Given the above, indigenous plants should be planted unless they are inappropriate for heritage, landscape significance or functional reasons.

Our undulating hills offer scenic views of the Yarra Valley and include spectacular views of Melbourne and the mountain ranges in the east.

The amenity of these landscapes is a major factor in why we choose to live in Banyule. Inappropriate overhead cabling has particularly been identified as having adverse impacts on landscape values. It is important to ensure these values are protected in the future development of our built environment and opportunities realised for their enhancement.

The landscape values of particular areas have been identified through the Heritage Places Study, the Neighbourhood Character Strategy, Significant Tree and Vegetation Study, Street Tree Strategy and Wildlife Corridor Program Report. The Banyule Planning Scheme also protects these landscapes.



OBJECTIVE

to recognise the contribution of vegetation cover to Banyule's environment and to protect and enhance the amenity of our diverse landscape values

KEY ACTIONS

- 5.1** identify the landscape values of particular areas and adopt planting policies which reflect and enhance their character while being mindful of the preference for indigenous species on biodiversity and resource conservation grounds
- 5.2** develop and implement procedures for the assessment of proposed developments on vegetation and landscape amenity and ensure compensation for any loss of vegetation
- 5.3** identify and provide appropriate protection for vegetation of environment, heritage or landscape significance on public and private land
- 5.4** develop and implement programs for the enhancement of streetscapes and parks with vegetation and for the appropriate replacement of vegetation lost or removed
- 5.5** develop and implement programs for the undergrounding of overhead cables to minimise impacts on landscape amenity in accordance with Council's Undergrounding of Aerial Cable Policy.

6. Heritage Places

Banyule's heritage has close associations with the features of our environment. Waterways and wetlands provided important sources of food and materials for Aboriginal people. Scatters of artifacts, stone tools and old River Red Gum scar trees provide clues to this use over a long period. Sites have been identified through various studies and are protected under legislation and the Banyule Planning Scheme.

European settlers recognised the values of the fertile flood plains, establishing pastoral properties, orchards and market gardens. Some of the stately early homesteads remain as features of our built environment today, along with the exotic vegetation planted in formal gardens or marking former property boundaries.

Many notable people have settled in or visited the area because of the values of our environment. Our landscapes in particular provided inspiration for artists from the Heidelberg School.

Recognition of the links between our environment and heritage provides valuable insight into our society. The ongoing protection of those values is vital to understanding our social development and their enhancement offers educational, recreational and tourism opportunities.

The Banyule's Heritage Places Study was undertaken in 1998 and many sites have been protected under the Planning Scheme.

OBJECTIVE

to identify and protect Banyule's heritage and recognise and encourage links between that heritage and the environment

KEY ACTIONS

- 6.1** identify the values of heritage places and their association with our environment
- 6.2** develop and implement procedures for the assessment of proposed developments on the values of heritage places and to provide for their protection
- 6.3** encourage development in keeping with the values of heritage places and create and take opportunities for their enhancement as features of our environment



7. Building Design and Infrastructure

Banyule's development has encompassed a diverse range of architectural designs and styles which have brought character to our built environment. Notable features include residential estates designed by Walter Burley Griffin, incorporation of the landscape concepts of Ellis Stones and the village established for Melbourne's Olympic Games in 1956. Strip shopping centres are also major features of our built environment, providing visual character to our local area and vitality to our community.

It is important to ensure the design and layout of buildings reflect the characteristics we value in our built environment and do not impact on the values of our natural environment. There are opportunities for enhancing the amenity of our commercial and industrial areas in particular through appropriate design. The use of energy and water efficient design and environmentally sustainable and non-toxic materials also offer benefits for our environment while reducing costs over time

The layout and availability of infrastructure such as roads, public transport, shopping facilities and schools play a key role in how our community functions and our environmental amenity. They have major implications for ensuring the efficient use of resources and particularly in the minimisation of air and noise pollution from vehicles. Vehicular traffic has a significant detrimental impact on the amenity of our residential areas and shopping precincts.

The structure and diversity of facilities within Banyule offers many opportunities for encouraging alternatives to the use of motor vehicles for transport, including walking and cycling, and also for increasing the use of public transport.

Opportunities for improving infrastructure should consider the needs of our community and the potential for enhancing our environmental amenity.

OBJECTIVE

to encourage development within Banyule that is sustainable, sympathetic with our environment and consistent with the needs of our community

KEY ACTIONS

- 7.1** identify areas appropriate for different types of development in accordance with the efficient use of infrastructure and community needs, while minimising impacts on environmental values
- 7.2** encourage the design of buildings and layout of development in a manner which will protect and enhance our environmental amenity, provide buffers to environmentally sensitive areas and promote the efficient use of resources
- 7.3** encourage and implement programs for the development of infrastructure that will assist in protecting and enhancing our environment
- 7.4** develop and implement programs to maintain and enhance the local character of strip shopping centres and improve the amenity of other commercial and industrial areas



Sustainability

8. Ensuring a Sustainable Future

The growth of our population and associated urban development has brought many changes to our environment over a relatively short period. New technologies and approaches are continually being developed to cater for our personal needs, particularly with regard to how we communicate and travel. The way in which we utilise these advances has major implications for how we function as a society and the resources we require.

Careful planning of future development will be needed to ensure ongoing protection of the values of our environment, in addressing the demands of our community and providing for its sustainability. To achieve the best outcomes, it is necessary to pursue the long-term environmental, social and economic health of Banyule and all other environments and societies that we impact upon. This triple bottom-line approach is a new science, but Banyule has engaged in this process because of its promise of achieving the best possible outcomes for ourselves and future generations. Cultural sustainability is a more recent addition to the triple bottom line approach and will also be taken into consideration in the development of a Sustainability Framework for Banyule.

OBJECTIVE

to plan for the environmental, social and economic sustainability of Banyule

KEY ACTIONS

- 8.1** undertake and encourage research into the social and technological requirements for the future sustainability of our environment
- 8.2** develop and implement planning policies and controls which provide for and promote the future sustainability of our environment
- 8.3** develop a Sustainability Framework for the effective integration into Council practices of the environmental, social and economic aspects of sustainability



Resources, Waste and Pollution

9. Conserving Resources

The rate at which society consumes its resources is a major issue for our environment and future well-being, particularly as the population of our planet continues to grow. Many resources, including our minerals and fossil fuels, are non-renewable and their depletion is inevitable unless alternatives are found. Similarly, many of our potentially renewable resources are being utilised at a rate higher than the rate at which they can be replenished.

The costs of finding and harvesting resources are usually high, both financially and to our environment. Impacts of the pollution produced from the utilisation of resources on our atmosphere and water are major environmental issues worldwide.

It is important that we all share some responsibility for our resource consumption and the consequences of their use by "thinking globally and acting locally". We can all help to conserve resources by minimising our consumption of energy, fuel and water and by using products developed from sustainable sources or made from recycled materials wherever possible.

To address these issues Council has adopted a Greenhouse Action Strategy to reduce greenhouse gases and energy use. It is implementing Environmental Purchasing Guidelines and a Sustainable Building Checklist. A Water Conservation Strategy is currently being developed.



OBJECTIVE

to reduce the amount of resources utilised within Banyule and to encourage the efficient and sustainable use of the resources that are used.

KEY ACTIONS

- 9.1** develop and implement programs which promote a reduction in the amount of resources utilised, the efficient and sustainable use of the resources that are used and the use of alternatives to non-renewable resources
- 9.2** undertake environmental audits of Council buildings and operations and implement practices to reduce resource consumption and waste as an example to other organisations and the community
- 9.3** encourage and support the development and use of energy and water efficient products and technologies by the provision of
 - a) information at service centres
 - b) seminars for schools, community and business
 - c) incentives
 - d) targeted programs to deal with problem areas etc



10. Minimising Waste

The amount of resources we consume has direct implications for the amount of waste we produce. As well as minimising waste by reducing the quantity of resources we use, we can also ensure that any waste we do produce is disposed of thoughtfully, particularly to reduce the amount of waste going to landfill. The space required for landfill and the by-products of waste disposal are ongoing costs for our community and environment.

The relatively recent development of new technologies and approaches to waste disposal allow us to recycle much of the waste we produce or utilise it in alternative ways. The collection of recyclable materials including glass, plastics, metal and paper products is a substantial part of current waste collection services. We can all help by using recyclable products and ensuring that as much of the waste we produce is available for recycling as possible.

Green-waste from food scraps and gardens continues to be a major component of the waste we produce. Techniques such as composting and mulching offer useful means of re-using this valuable organic matter.

Council is implementing a Waste Minimisation Strategy and aims to divert 80% of waste from landfill by 2008.

OBJECTIVE

to prevent the unnecessary production of waste within Banyule

KEY ACTIONS

- 10.1** provide waste collection services which encourage the separation of recyclable and re-usable waste and provide incentives for minimising the amount of waste produced
- 10.2** encourage and support the development of technologies and industries for the re-use and recycling of waste



11. Controlling Pollution

There are many potential sources of pollution within Banyule which can impact on our environmental assets and amenity. They can have adverse impacts on our atmosphere, the quality of our water, our visual amenity, our health, or simply the tranquillity of our surroundings. Most result from our utilisation of resources or the way we develop our built environment.

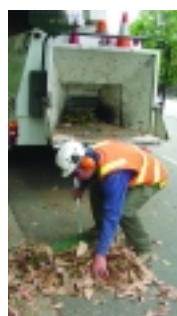
The greenhouse effect and stratospheric ozone depletion are environmental issues with major implications for society and future generations worldwide. It is important that we all share responsibility towards reducing the pollution which contribute to these global issues as well as minimising the pollution of our air locally.

The use of motor vehicles contributes significantly to pollution and impacts on the amenity of our environment in a number of ways. The availability of public transport and trail networks within Banyule offer valuable means of reducing our dependence on cars. A Transport Strategy has been developed for Banyule and an Integrated Transport Strategy for northeast Melbourne is under way.

Preventing pollution from entering waterways is important in protecting our environmental values locally. Sources of waterway pollution include litter and run-off from our streets, sediment from construction sites and chemicals from drains.

Graffiti and vandalism can have a detrimental impact on the visual amenity of both our built and natural environments. Council has developed a Graffiti Policy which advocates the immediate removal of graffiti as a major disincentive to offenders.

Environmentally friendly products and technologies are continually being developed to minimise pollution and we should take opportunities to utilise these wherever possible. It is also important to ensure the safe use and disposal of any potentially hazardous chemicals or materials.



OBJECTIVE

to minimise the impacts of pollution on Banyule's environment

KEY ACTIONS

- 11.1** develop and implement policies and controls for preventing air, noise, water, light and visual pollution
- 11.2** develop and implement procedures to identify and assess the threats of pollution to our environment, for the reporting of pollution and for the rehabilitation of polluted sites
- 11.3** encourage and promote alternatives to reliance on the use of private cars for transport by creating and taking opportunities for the enhancement of public transport, trail networks and infrastructure
- 11.4** ensure the implementation of the Environmental Purchasing Guidelines achieves the use of environmentally friendly products and technologies which minimise pollution in preference to those which potentially create pollution.
- 11.5** develop and implement programs to prevent litter and sediment from entering our waterways and from degrading our environment in general
- 11.6** encourage and support programs for the safe disposal and collection of hazardous materials
- 11.7** ensure staff and contractors are appropriately trained in the safe handling and use of materials which are potentially hazardous to the environment

Community Awareness and Involvement

12. Promoting Our Environment

Appreciation of the values of Banyule's environment and of requirements for its protection and enhancement is essential in ensuring its future sustainability. Many of the threats to our environment can be avoided if our community knows what is required and is willing to help. Opportunities for enhancing our environment particularly arise through the awareness and interest of our community.

Important ways of increasing environmental awareness include the availability of written information, provision of advice and promotions. Community activities and school education programs offer valuable opportunities for learning about our local environment.

Local tourism also has the potential to offer benefits towards the ongoing appreciation and enhancement of our environment. The availability of signage and interpretive information are important in ensuring appropriate awareness and respect for our environmental values.

OBJECTIVE

to increase awareness of the values of Banyule's environment and of requirements for its protection and enhancement

KEY ACTIONS

- 12.1** develop and make available up to date information, brochures and publications promoting our environment and how to look after it
- 12.2** develop and make available environmental education programs and activities for schools and the community
- 12.3** develop and install interpretive signage at key locations promoting our environment
- 12.4** develop and facilitate tourism opportunities for promoting our environment in a manner which is compatible with protecting and enhancing its amenity



13. Supporting Community Involvement

Banyule's community has played a major role in the protection and enhancement of our environment. A number of environmental groups have become established in the local area that have fought to protect significant sites from inappropriate development, have helped to raise community awareness of environmental issues, and have had a high level of active involvement in enhancing our parklands.

The involvement of groups such as the Warringal Conservation Society, Riverlands Conservation Society, Friends of Plenty River, Friends of Wilson Reserve, Friends of St Helena Reserve, Macleod Progress Association and Darebin Parklands Association over many years bears testimony to this. They have been responsible for initiating many revegetation projects in parklands along the waterways in particular and have played a key role in establishing local environmental features such as the Warringal Swamplands and Banyule Native Gardens.

Local schools also play an important role in increasing the environmental awareness of our younger population, while many other community groups incorporate the local environment into their activities in a variety of ways.

Community groups and volunteers are valuable assets for our environment, particularly with regard to the sense of community ownership they foster and the diversity of skills of the people who participate. They often function with few resources but thrive on the dedication of the people involved. The value of such involvement is well recognised and we can all help to improve our environment by participating in the activities of groups promoting its enhancement and by offering support wherever possible.



OBJECTIVE

to provide support and create opportunities for community involvement in protecting and enhancing Banyule's environment

KEY ACTIONS

- 13.1** further develop indicators and other performance measures and identify responsibilities for the implementation of the environment strategy
- 13.2** produce an annual State of the Environment Report identifying both achievements and failures in the implementation of the environment strategy, priorities for further action and future financial requirements
- 13.3** encourage the involvement of community groups or the formation of new groups in protecting and enhancing our environment where increased involvement would be desirable



Implementing the Environment Strategy

14. Integrated Approach

There are many organisations and individuals who have interests and responsibilities in managing Banyule's environment. They not only include Council, a variety of other government organisations and community groups, but also include the private businesses, industries and landowners throughout the municipality who utilise our resources or potentially impact upon our environmental amenity.

Some of the key organisations with responsibilities in managing our environment include the Department of Sustainability and Environment, Department of Primary Industry, Parks Victoria, Melbourne Water, the Port Phillip and Westernport Catchment Management Authority, YarraCare and the Environment Protection Authority. They have prepared a range of policies and strategies relevant to our environment and many benefits and efficiencies can be achieved by ensuring consistency between these.

Council has developed important partnerships with many organisations including the Municipal Association of Victoria, Sustainable Energy Authority of Victoria, International Council for Local Environmental Initiatives and Environs Australia to pursue collaborative environmental programs.

There are opportunities for the involvement of a variety of stakeholders in protecting and enhancing our local environment and it is important that a coordinated approach is adopted towards implementing Banyule's environment strategy. The appropriate awareness and training of workers operating within our environment is of particular importance. Council's Environment Advisory Committee offers community representation in ongoing decision making processes relevant to the strategy.

There are a range of initiatives being developed and implemented throughout the region and beyond which have implications for the protection and enhancement of Banyule's environment. The effective management of waterways, for example, requires the cooperation of all of the municipalities which occur along their length. Councils can play a key role in facilitating a consistent approach to environmental management across the region and by realising opportunities to utilise resources efficiently through regional cooperation. It is also important that we have appropriate input into relevant policies and strategies being developed by other levels of government.

OBJECTIVE

to develop and facilitate an integrated approach towards managing Banyule's environment

KEY ACTIONS

- 14.1** facilitate and provide opportunities for involvement of the community and other organisations in decision making processes and feedback on the implementation of the environment strategy
- 14.2** develop and implement programs for raising the environmental awareness of staff, encouraging their commitment to environmental best practice, and providing appropriate training in environmental management
- 14.3** encourage and participate in regional initiatives consistent with the environment strategy as a means of developing an integrated approach to protecting and enhancing our environment and ensuring the efficient use of resources
- 14.4** consult and liaise with governments and government agencies on the need for and effects of regional, state and national policies and programs relevant to our environment



15. Monitoring Progress

The *Banyule Environment Strategy* provides clear direction for protecting and enhancing our local environment. The “key actions” presented intentionally allow for flexibility in implementation to incorporate the development of new initiatives and to adjust to the availability of resources. The detailed Action Plan provided later in this strategy provides the major focus for the next few years.

Monitoring and accountability is provided through the existing as well as newly developed performance measures, through the clear identification of responsibilities and the annual production of the State of the Environment Report. The latter outlines achievements and failures in the implementation of the environment strategy and identifies further actions and resources required.

OBJECTIVE

to monitor the progress of Banyule’s environment strategy and be accountable for its implementation

KEY ACTIONS

- 15.1** further develop indicators and other performance measures and identify responsibilities for the implementation of the environment strategy
- 15.2** produce an annual State of the Environment Report identifying both achievements and failures in the implementation of the environment strategy, priorities for further action and future financial requirements



16. Reviewing the Strategy

It is to be expected that priorities for protecting and enhancing our local environment will alter over time as circumstances change.

While the annual State of the Environment Report provides the avenue for updating actions in accordance with the future needs of our environment and community, it is desirable that a full review of the Environment Strategy is undertaken on a five yearly basis.

OBJECTIVE

to review Banyule's Environment Strategy in accordance with changes in priorities of our environment and the attitudes of our community

KEY ACTIONS

- 16.1** review the Environment Strategy on a five yearly basis to accommodate changes in priorities for protecting and enhancing our environment



Further References

Other key documents produced by Banyule Council or being developed with relevance to the Environment Strategy include:

- *Banyule City Plan 2003-2006*
- *Banyule Housing Statement 1997*
- *Banyule Heritage Places Study 1999*
- *Banyule Integrated Transport Strategy 2003*
- *Banyule Planning Scheme*
- *City of Banyule Neighbourhood Character Strategy 1999*
- *Cultural Strategy 2002*
- *Dogs (and Cats) in Public Places 1996*
- *Drainage Policy 1997*
- *Environmental Education Strategy (in prep.)*
- *Environmental Purchasing Guidelines 2002*
- *Environmental Weeds 1996*
- *Greenhouse Action Strategy 2002*
- *Municipal Bicycle Strategic Statement 1996*
- *Municipal Public Health Plan 2002*
- *Northeast Melbourne Waterwatch Program (annual reports)*
- *Open Space Strategy (1997,2003)*
- *State of the Environment Report (2000, 2001, 2002, 2003)*
- *Stormwater Quality Management Plan 2002*
- *Sustainable Building Checklist 2002*
- *Undergrounding of Aerial Cable Policy 1996*
- *Vegetation Communities of the City of Banyule 2000 (Report and Map)*
- *Waste Management Minimisation Strategy Plan 2000-2004*
- *Water Conservation Strategy (in prep.)*
- *Wildlife Corridor Program Report 2000*

National, state and regional policies and strategies also play a significant role in shaping our future and will be considered in ensuring a consistent approach to managing our environment. Some of the key documents relevant to our environment include:

Australian Greenhouse Office (1998) *National Greenhouse Strategy Strategic Framework for Advancing Australia's Greenhouse Response*

Australian Greenhouse Office (1999) *Managing energy in local government. An energy efficient workbook for CCP™ Australia councils developed by the Australian Greenhouse Office, 1999*

Australian Greenhouse Office (2000) *National Greenhouse Strategy 2000 Progress Report*

Australian Greenhouse Office (2002) *Reducing greenhouse emissions from TRANSPORT: what local government can do*

Australian Greenhouse Office (2002) *Reducing greenhouse emissions from TRANSPORT: what local government can do*

Australian Greenhouse Office (2002) *Reducing greenhouse emissions through PLANNING AND URBAN DESIGN: what local government can do*

Australian Greenhouse Office (2002) *Reducing greenhouse emissions through CLEANER PRODUCTION: what local government can do*

Australian Greenhouse Office (2002) *Reducing greenhouse emissions from COMMERCIAL AND INDUSTRIAL BUILDINGS: what local government can do*

Australian Greenhouse Office (2002) *Working Energy Program for local government Resource and Training Kit*

Australian Greenhouse Office (2003) *Cities for Climate Protection™ Australia Program Report 2002* Australian Greenhouse Office in collaboration with the International Council for Local Environmental Initiatives, February 2003

Australian Heritage Commission (2000) *Protecting Local Heritage Places: a guide for communities*

Australian Heritage Commission (2000) *Australian Natural Heritage Charter for the Conservation of Places of Natural Heritage Significance (Second Edition)*

Australian Local Government Association (1999) *National Local Government Biodiversity Strategy*

ANZECC (1993) *Strategy for Ozone Protection in Australia.*

Australian New Zealand Environment and Conservation Council, Australian National Parks and Wildlife Service, Canberra.

Further References

- ANZECC (1993) *National Strategy for the Conservation of Australia's Biodiversity*. Australian New Zealand Environment and Conservation Council, Taskforce on Biological Diversity.
- ANZECC (2001) *Review of the National Strategy for the Conservation of Australia's Biological Diversity*. Australian and New Zealand Environment and Conservation Council Environment Australia,
- ANZECC (2001) *Core Environmental Indicators for Reporting on the State of the Environment*.
- Beardsell, C. (1997) *Sites of Faunal and Habitat Significance in North East Melbourne*. 6 Volume study prepared for the North East Regional Organisation of Councils (NEROC), Nillumbik Shire Council.
- Beardsell, C. (2000) *Vegetation Communities of the City of Banyule 2000*. Report and map.
- CEPA (1992) *National Waste Minimisation and Recycling Strategy*. Commonwealth Environment Protection Agency, Department of the Arts, Sport the Environment and Territories.
- Commonwealth Department of Tourism (1994) *National Ecotourism Strategy*. Australian Government Publishing Service, Canberra.
- Commonwealth of Australia (1984) *Aboriginal and Torres Strait Islander Heritage Protection Act 1984*
- Commonwealth of Australia (1984) *Ozone Protection Act 1989*
- Commonwealth of Australia (1992) *National Strategy for Ecologically Sustainable Development*. Australian Government Publishing Service, Canberra.
- Commonwealth of Australia (1992) *National Greenhouse Response Strategy*. Australian Government Publishing Service, Canberra.
- Commonwealth of Australia (1992) *The National Water Quality Management Strategy*
- Commonwealth of Australia (1998) *National Environment Protection Measures (Implementation) Act 1998*
- Commonwealth of Australia (1999) *Environment Protection & Biodiversity Conservation Act 1999*
- Commonwealth of Australia (2001) *Australia State of the Environment 2001* Report and the seven supporting theme reports that provide the background information.
- Commonwealth of Australia (2002) *Australian Terrestrial Biodiversity Assessment 2002*. National Land and Water Resources Audit c/o Land & Water Australia.
- Commonwealth of Australia (2002) *Environment Protection and Biodiversity Conservation Amendment (Wildlife Protection) Act 2001*
- Cotter, B. & Hannan, K. (1999) *Our Community Our Future: A Guide to Local Agenda 21*. Prepared by Environs Australia for Environment Australia,
- DCE (1992) *Flora and Fauna Guarantee Strategy: Conservation of Victoria's biodiversity*. Department of Conservation and Environment, Victoria.
- DCNR (1993) *Port Phillip-Westernport Regional Landcare Plan*. Department of Conservation and Natural Resources, Victoria.
- Department of Environment, Sport and Territories (1994) *State of the Environment Reporting: framework for Australia*. Australian Government Publishing Service, Canberra.
- Department of Environment, Sport and Territories (1996) *National Strategy for the Conservation of Australia's Biological Diversity*
- Department of Natural Resources and Environment (1998) *Victoria's Biodiversity Strategy - Sustaining our Living Wealth*
- Department of Natural Resources and Environment (2002) *Biosites – Sites of Biodiversity Significance in Port Phillip and Westernport Region*
- Department of Natural Resources and Environment (2002) *Victorian Greenhouse Strategy*
- Department of Natural Resources and Environment (2002) *Victoria's Native Vegetation Management – A Framework for Action*
- Environment Australia (2000) *Environmental Education for a Sustainable Future: National Action Plan*
- Environment Australia (2001) *National Objectives and Targets for Biodiversity Conservation 2001-2005*
- Environment Protection Agency (1996) *Getting Ahead of the Game A Cleaner Production Handbook for Local Government*. Prepared for the Environment Protection Agency by Local Sustainability Project Centre for Resource and Environmental Studies Australian National University and Deni Greene Consulting Services.

- EPA (1995) *Protecting Water Quality in the Yarra Catchment* State environment protection policy (Waters of Victoria) Draft Schedule F7 (Waters of the Yarra Catchment). Environment Protection Authority Publication 471, Victoria.
- EPA (1995) *Victoria's Litter Reduction Strategy*. Environment Protection Authority, Victoria.
- Marquis-Kyle, P. and Walker, M. (1992) *The Illustrated Burra Charter: making good decisions about the care of important places*. Australia ICOMOS, Sydney.
- MPW (1995) *A Guide to Priorities for Melbourne's Open Space Network: Northern Tributaries*. Melbourne Parks and Waterways, Victoria. (Evidently replaced by Open Space Strategy BEAC)
- MPW (1995) *Lower Darebin Creek Concept Plan - exhibition copy*. Prepared by the Planning and Environment Division of Melbourne Parks and Waterways under the guidance of the Lower Darebin Creek Concept Plan Steering Committee.
- MPW (1994) *Lower Plenty River Concept Plan - prescription document*. Melbourne Water, Parks and Waterways Division, Melbourne.
- Melbourne Water (2000) *Darebin Creek Waterway Management Activity Plan*.
- Melbourne Water (2001) *Plenty River Waterway Management Activity Plan*
- Port Phillip CALP Board (1997) *Port Phillip and Westernport Regional Catchment Strategy*. Port Phillip Catchment and Land Protection Board, Victoria.
- Port Phillip and Westernport Catchment Management Authority (2003) *Sustainability objectives for natural resource management in the Port Phillip and Westernport region*. A discussion paper contributing to the development of a new Regional Catchment Strategy.
- Port Phillip and Westernport Catchment Management Authority (2003) *Port Phillip and Westernport Native Vegetation Plan*
- Port Phillip and Westernport Catchment Management Authority (2003) *Port Phillip and Westernport Rabbit Action Plan*
- Port Phillip and Westernport Catchment Management Authority (2003) *Port Phillip and Westernport Weed Action Plan*
- Port Phillip and Westernport Catchment Management Authority (2003) *Strategy for the support and co-ordination of Landcare and Community groups in the Port Phillip and Westernport Region*.
- State Government of Victoria (1990) *The Middle Yarra River Concept Plan: Dights Falls to Burke Road*. Department of Planning and Urban Growth and Department of Conservation and Environment, Victoria.
- State Government of Victoria (1993) *The Middle Yarra Concept Plan: Burke Road to Watsons Creek*. Department of Planning and Housing, Victoria.
- UNCED (1992) *Agenda 21*. United Nations Conference on Environment and Development Secretariat, Geneva.
- Victorian Government (1987) *Planning and Environment Act 1987*
- Victorian Government (1987) *Protecting the Environment: A State Conservation Strategy for Victoria*. Victorian Government Printer.
- Victorian Government (1988) *Victoria's Flora and Fauna Guarantee Act 1988*.
- Victorian Government (1970) *Environment Protection Act 1970*
- Victorian Government (1992) *Heritage Rivers Act 1992*
- Victorian Government (1994) *Catchment and Land Protection Act 1994*
- Victorian Government (1995) *Heritage Act 1995*
- YarraCare (1998) *Yarra Catchment Strategy*. YarraCare Working Group, Department of Natural Resources and Environment.

How To Get Involved

There are many ways in which we can all learn about and help to improve our local environment through our actions as individuals and as a community.

Banyule Council has a range of information available on how to protect and enhance our local environment. Contact Banyule's Service Centres at Ivanhoe, Rosanna or Greensborough for further details, or visit Banyule's website at www.banyule.vic.gov.au. There are also a variety of environmental activities and information sessions organised within the municipality which you can participate in. These are regularly promoted in local newspapers, Council's newsletter, the Banner and on Council's website www.banyule.vic.gov.au.

One of the most rewarding ways of learning about and helping to improve our environment is through participation in the activities of local community groups. Environment groups regularly organise activities within the local area. Contacts are listed as follows:

CONCERNED RESIDENTS
OF VICTORIA CROSS ESTATE
Valerie Lloyd Smith – 9458 1343
16 Dunstan Street, Macleod 3985

DAREBIN CREEK MANAGEMENT
COMMITTEE (inc)
Coordination Division
Adrian Infanti – 9499 4454
PO Box 5093, Alphington 3078
info@dcmc.org.au

Parklands Division
Peter Wiltshire – 9499 4454
PO Box 5093, Alphington 3078
parklands@dcmc.com.au

DAREBIN PARKLANDS ASSOCIATION
Eve Recht – 9497 1332
PO Box 3, Ivanhoe 3079

DONALDSONS CREEK
RESERVE ASSOCIATION
Craig Langdon – 9499 5248
14 McNeil Street, West Heidelberg 3081

FRIENDS OF DAREBIN CREEK
Jamie Chancellor – 9457 4040
PO Box 5036, Alphington 3078

FRIENDS OF DIAMOND CREEK
Sue Dyet – 9439 1175
7 Leonard Crescent, Eltham 3095

FRIENDS OF PLENTY RIVER
Alice and Kevin Ley – 9435 3840
1 Havelock Court, Lower Plenty 3093

FRIENDS OF ST. HELENA BUSH RESERVE
Lawrie Rigg – 9434 6685
11 Dunbarton Drive, Eltham 3095

FRIENDS OF THE ELTHAM
COPPER BUTTERFLY
Anna Richtarik
PO Box 999, Eltham 3095

FRIENDS OF WILSON RESERVE
Robert Bender – 9499 2413
9 Bailey Grove, Ivanhoe 3079



FRIENDS OF THE YARRA
VALLEY PARKLANDS
8846 4000
PO Box 568, Templestowe 3106
www.yvfriends.org.au

GREENING AUSTRALIA VICTORIA
9457 3024
Buckingham Drive (PO Box 525),
Heidelberg 3084

LATROBE UNIVERSITY FRIENDS
OF THE WILDLIFE RESERVE
George Paras – 9479 2871
LaTrobe University, Bundoora 3083

MONTMORENCY FIELD NATURALIST CLUB
Anne Lawrence – 9439 8630
21 Andrews Street, Eltham 3095

RIVERLANDS CONSERVATION SOCIETY
John Merory – 9499 6737
PO Box 246, Ivanhoe 3079

ROSANNA PARKLANDS
PROTECTION ASSOCIATION
Pam McIntyre – 9459 3865
4 Bachli Crescent, Rosanna 3084

WARRINGAL CONSERVATION SOCIETY
Carol James – 9499 3761
PO Box 64, Rosanna 3084

Detailed Action Plan

Responsible Officers/ Organisations for Implementation of the Action Plan in the Environment Strategy 2003

Bold entries indicate the officer or organisation has responsibility for the action, non bold entries indicate a contributing role.

AMC	Asset Management Coordinator 3.3f , 11.1b ; 11.5a	CSC	Cultural Services Coordinator 6.3b ; 9.1b; 12.6a; 14.1b; 14.1d
BEAC	Banyule Environment Advisory Committee 16.1a	CSPU	Coordinator Social Planning Unit 2.3e; 3.2a; 3.4a,b; 4.1a,b; 4.2a; 4.3a ; 4.5a; 12.6a
BMC	Bushland Management Coordinator 1.1d, 1.2a,b, c ; 1.3c ; 1.4a ,b,c,d,e; 1.5b; 2.1a-c; 2.2c ; 2.3d,e; 2.4a,c,d; 3.2a; 3.3a-d,e,f,g; 3.4a,b; 3.5a; 4.1a-c; 4.2a; 4.3a ; 4.4a,b; 4.5a; 5.1a,b,c; 5.4b,d; 9.1c; 11.1b ; 11.5c; 12.1a ; 12.2a ; 12.3a ; 12.4a,b; 12.5a; 13.1a,b,c; 14.1b,d; 14.2a; 14.3a; 14.4a	CSS	Customer Service Staff 7.2c; 12.1a ; 12.2a
BMSC	Building Maintenance & Service Coordinator 9.1a	DCC	Darebin Creek Coordinator 1.1d , 1.2b,c; 1.3c ; 1.4a ,b,c,d,e; 1.5b; 2.1a-c; 2.2c ; 2.3d,e; 2.4a,c,d; 3.2a; 3.3a-d,e,f,g; 3.4b; 3.5a; 4.1a-c; 4.2a; 4.3a ; 4.5a; 5.1a,b,c; 5.4b; 9.1c; 11.1b ; 11.5c; 12.1a ; 12.2a ; 12.3a ; 12.4a,b; 12.5a; 13.1a,b; 14.1b,d; 14.2a; 14.3a; 14.4a
BO	Building Officers 2.3a	DCD	Director City Development 5.5b ; 9.1i ; 11.3e; 14.1c
BSOC	Business Services Officer (Contracts) 4.4a,b; 11.4c; 15.1e	DCorS	Director Corporate Services 9.1a
BS	Building Surveyor 7.2c; 9.1d	DCS	Director City Services 1.3b ; 2.3a; 9.1i ; 10.1c; 10.2a; 11.6c; 11.7a
C	Council 2.2a; 3.3c	DSE	Department of Sustainability and Environment 1.2a
CC	Communications Coordinator 4.1c; 6.3b ; 11.5c; 11.6a,b; 12.1a ,b; 12.2a ; 12.4a,b; 14.1a	EDP	Economic Development Planner 7.4a,b; 11.1b
CP	City Planner 1.3e; 2.3a; 2.4c ; 3.1a ; 3.4a; 5.2a; 6.2b ; 7.1a; 7.2a,d; 8.2a ; 9.1c,d	EHO	Environmental Health Officer 11.1a; 11.2a-c; 11.6b,c; 11.7a
CCP	Cities for Climate Protection Officer 9.1a ,f,g,i; 9.2a ; 11.1c; 14.2b	EO	Environmental Officer 1.1a-f ; 1.2a-c; 1.3a-d ; 1.4a ,b,d,e,f,i; 1.5a,b; 2.1a,c; 2.2a,b; 2.3b,c; 3.1a ; 3.3d-f ; 3.4a; 3.5a; 4.1a-c; 4.2a; 4.3a ; 4.4a,b; 4.5a-c; 5.1a, c-e; 5.2a; 5.3a; 5.4d ; 7.2a,c,d; 7.3a; 8.1a,b,c; 8.2a,b ; 8.3a; 9.1a-c,e,f,h,i; 9.2a ; 11.1a,b,c; 11.2b,d; 11.3b; 11.4a-c; 12.1a,b; 12.2a; 12.3a; 12.4a,b; 13.1a,b,c; 14.1a-d; 14.2a-c; 14.3a; 14.4a; 15.1a,b ; 15.2a; 16.1a
CCS	Civil Construction Supervisor 1.3b ; 2.3a	EPA	Environment Protection Authority 11.2a,b; 11.6b
Comm	"The Community" 1.1d ; 14.1a		
CS	Construction Supervisor 1.3b ; 2.3a		

ESC	Engineering Services Coordinator 2.3a	NS	Nursery Supervisor 2.4a,b
EX	Executive 2.2a; 3.3e , 8.1b,c ; 8.2b ; 8.3a; 9.1a,h ; 11.1b ; 11.4a-c; 14.1a; 14.3a; 14.4a; 15b,c	PC	Purchasing Controller 8.1c; 9.1a,h ; 14.2b
FPO	Fire Prevention Officer 1.3c	PEO	Planning Enforcement Officer 1.3e; 3.1a ; 5.2a
HC	Heritage Consultant 5.1c; 5.2a; 6.2b	PMC	Parks Maintenance Coordinator 1.3b ; 2.3a
HSC	Horticultural Services Coordinator 1.2c ; 1.4a ; 2.4d ; 3.3c; 4.3a ; 5.1a,b; 5.4a,c,d; 9.1c	RCC	Rethink Centre Coordinator 8.1c ; 10.1a,b,d; 12.1a ; 12.3a ; 12.4a,b; 14.1d; 14.2a
M	Managers 15.1c	RTL	Risk Team Leader 11.7a
MAL	Manager Administration and Laws 1.4f-i	SPC	Strategic Planning Coordinator 1.3a ; 2.3b; 3.4a; 5.1a; 5.3a; 6.1a-c ; 6.2c ; 6.3b ; 7.1a; 7.2d; 8.2a,b ; 11.1c
MBI	Manager Business Improvement 9.1h , 15.1b	TCC	Tree Care Coordinator 2.2c , 2.4d ; 5.1a,b; 5.4a,c,d
MC	Manager Construction 1.3b ; 2.3a; 8.1c ; 11.1c; 11.6c; 11.7a; 14.2c	VR	VicRoads 1.4b; 11.3a,c
MDS	Manager Development Services 1.3b,d,e ; 2.3a-c; 3.1a ; 5.1a,e; 5.2a; 5.5a,b ; 6.1c ; 6.2a,b ; 7.1a; 7.2b; 8.2a ; 9.1d ; 11.1a; 11.3c-e; 11.5b; 14.1c	VRI	VicRail 1.4b
MLRC	Manager Leisure Recreation and Culture 12.6a	WC	Waterwatch Coordinator 3.3e; 9.2a
MO	Manager Operations 8.1c ; 9.1a ; 10.1c,d; 10.2a; 11.1a; 11.5a ; 11.6a,c; 11.7a; 14.3a; 14.4a	WCPO	Wildlife Corridor Program Officer 1.4c-e; 1.5b; 2.1a,b; 2.2a,b; 2.3c; 2.4a,c,d; 3.3a-d; 9.1c; 12.1a ; 12.2a ; 12.3a ; 12.4a,b; 13.1a,b,c; 14.1d; 14.2a
MPB	Manager Parks & Buildings 1.2c ; 1.4a,b ; 2.4b; 4.2a; 4.3a ; 5.1a,b,d; 5.4b-d; 6.2a ; 8.1c ; 9.1a ; 11.6c; 11.7a; 12.5a	WEC	Waste Education Coordinator 8.1c ; 10.1a,b,c,d; 10.2a; 11.5a,c; 12.1a ; 12.2a ; 12.3a ; 12.4a,b; 14.1d; 14.2a
MSE	Manager Strategic and Economic Development 2.3b,c; 3.4a; 7.1a; 7.4a,b; 11.3e; 14.1c		
MW	Melbourne Water 1.4b; 3.3a,b,d,g; 11.6b		

Environment Strategy Action Plan 2003

No.	Action	Responsibility	Priority	Status/Timing
I	PROTECTING FLORA AND FAUNA			
1.1	Maintain inventories of local flora and fauna and monitor the conservation status of indigenous species and habitats			
1.1a	Maintain and regularly update an inventory of local flora and fauna.	EO	Mod.	Ongoing
1.1b	Monitor, and update as appropriate, the conservation status of indigenous species and habitats	EO	Mod.	Ongoing
1.1c	With assistance from the Department of Sustainability and Environment and research bodies, develop an inventory of invertebrate fauna, non-vascular plants and micro-organisms.	EO	Mod.	2003/04
1.1d	Support and expand the monitoring program involving the community, naturalists, government authorities, educational bodies and Council employees that assesses the continued presence of indigenous species and communities.	EO, BMC, DCC, Comm	Mod.	Ongoing
1.1e	Undertake a study of sites of botanical significance throughout the municipality	EO	High	2004/05
1.1f	Identify and map all areas of remaining indigenous vegetation in Banyule (including areas on roadsides), indicating the types of vegetation community present and an assessment of their biological significance.	EO	High	2004/05
1.2	Prevent local extinctions through the development and implementation of management programs for rare or threatened flora and fauna and for key areas of natural habitat			
1.2a	Develop and implement management plans for rare or threatened species, vegetation communities and habitats, particularly for Victorian Rare or Threatened Species (VROTS), species listed under the Flora and Fauna Guarantee Act and species threatened locally. Undertake such work in co-operation with the Department of Sustainability and Environment.	EO, BMC, DSE	High	Ongoing
1.2b	Utilise information obtained in 1.1 to identify and target the areas of natural habitat of highest biological significance and those in greatest need of management, so as to optimise the use of limited resources.	BMC, DCC, EO	High	Ongoing
1.2c	Continually review the adequacy of current management of Council reserves and determine whether sufficient is being done to achieve the long-term protection, enhancement and expansion of natural habitat and species.	MPB, EO, BMC, DCC, HSC	High	Ongoing
1.3	Develop and implement practices that ensure threats to indigenous flora and fauna are identified and the impacts of proposed developments are appropriately assessed			
1.3a	Recognise any newly identified sites of biological significance in the local planning scheme and zone accordingly for their protection	EO, SPC	Mod	Ongoing
1.3b	Ensure that procedures for assessment of the environmental impact of proposed works and developments and changes of land use are properly implemented and that Council's own activities minimise any damage to native vegetation	MDS, DCS, MC, CCS, CS, PMC, EO	High	Ongoing

No.	Action	Responsibility	Priority	Status/Timing
1.3c	Ensure that in areas where fire management practices are likely to impact on conservation values of indigenous flora and fauna, that the developed guidelines are followed such that key species and habitats are protected whilst minimising fire hazard.	BMC, DCC, FPO, EO	High	Ongoing
1.3d	Ensure that the vegetation protection guidelines and other relevant information are provided to planning permit applicants wherever protected vegetation may be affected by a development.	MDS, EO	High	Ongoing
1.3e	Strictly enforce planning controls for the retention of native and other significant vegetation.	MDS, CP, PEO	High	Ongoing
1.4	Develop and implement programs to control the impact of introduced plants and animals on indigenous flora and fauna			
1.4a	Implement the Banyule Weed Management Strategy for the entire municipality in co-operation with landholders and relevant agencies	MPB, BMC, HSC, DCC, EO	High	Ongoing
1.4b	Liaise with relevant public authorities such as Melbourne Water, VicRoads and VicRail to encourage the removal of environmental weeds from land under their control	MPB, BMC, DCC, EO, MW, VR, VRI	Mod.	Ongoing
1.4c	Protect significant habitat by targeting potentially invasive weeds for removal from surrounding areas and encouraging the cooperation of adjoining landholders in their control.	BMC, DCC, WCPO	Mod.	Ongoing
1.4d	Encourage the whole community to be involved in the eradication of environmental weeds through information and incentives	EO, BMC, DCC, WCPO	Mod.	Ongoing
1.4e	Encourage the formation of landcare and friends groups in suitable areas of the municipality	EO, BMC, DCC, WCPO	High	Ongoing
1.4f	Reassess "No-Go" areas for dogs in Banyule Flats to ensure appropriate protection of wildlife in this area of State faunal significance.	EO, MAL	Mod.	2004/05
1.4g	Pursue co-operative efforts with Parks Victoria and private landowners to protect native wildlife and flora from the negative impacts caused by introduced animals.	EO, WCPO, BMC, DCC	Mod.	Ongoing
1.5	Ensure management of flora and fauna is up to date and informed by research			
1.5a	Undertake and encourage further research on the management of indigenous flora and fauna and threats to their survival.	EO	Mod.	Ongoing
1.5b	Constantly monitor improvements in bushland rehabilitation techniques, incorporate them into Council work practices, and pass on such information to the community.	BMC, DCC, WCPO, EO	Mod.	Ongoing
2	ENHANCING HABITAT			
2.1	Implement programs for the rehabilitation and enhancement of degraded natural habitats			
2.1a	Continue to develop revegetation and habitat restoration programs cooperatively involving agencies and the community	BMC, DCC, WCPO, EO,	High	Ongoing

Environment Strategy Action Plan 2003

No.	Action	Responsibility	Priority	Status/Timing
2.1b	Maintain detailed records of habitat rehabilitation and weed eradication works, so that the most effective methods can be identified and utilised in similar situations elsewhere.	BMC, DCC, WCPO,	Mod.	Ongoing
2.1c	Utilizing the Council's GIS system, map areas of indigenous vegetation, graded according to its intactness, and constantly update the maps as works are undertaken.	EO, BMC, DCC	Mod.	2003/04
2.2	Implement programs for the restoration and enhancement of strategic wildlife corridors linking areas of natural habitat			
2.2a	Maintain funding of the Wildlife Corridor Program and seek continuing external funding from the NHT and other funding bodies	C, EX, WCPO, EO	High	Ongoing
2.2b	Encourage the involvement of local businesses and the community in the Wildlife Corridor Program	WCPO, EO	High	Ongoing
2.2c	Continue to re-establish wildlife corridors on Council land	BMC, DCC, TCC	High	Ongoing
2.3	Pursue procedures and incentives for the retention and enhancement of remnant habitat on private and public land			
2.3a	Minimise alterations in drainage within areas supporting natural vegetation.	MDS, CP, ESC, BO, DCS, MC, CCS, CS, PMC	High	Ongoing
2.3b	Develop guidelines and controls for the minimisation of soil disturbance, relocation of soil and the retention of topsoil in areas supporting indigenous vegetation	MSE, MDS, EO, SPC	High	Ongoing
2.3c	Wherever practical, promote the retention of habitat trees whether dead or alive, and prepare a brochure to support this.	MSE, MDS, WCPO, EO,	Mod.	Ongoing Brochure in 2003/04
2.3d	Retain, where practicable, trees with hollows (both dead and living) and a reasonable cover of fallen logs and branches on Council managed bushland, as these provide essential habitat for many native plants and animals.	BMC, DCC,	Mod.	Ongoing
2.3e	Locate new bicycle and walking tracks away from areas of intact native vegetation, or where it proves necessary to establish tracks in such vegetation do this in a manner that minimises the immediate and ongoing impact.	CSPU, BMC, DCC,	Mod.	Ongoing
2.4	Identify priorities and implement practices for the re-establishment of depleted habitats			
2.4a	Increase the number of indigenous species available for planting by <ul style="list-style-type: none"> collecting seed and cuttings and propagating a greater number of species advising local nurseries that Council will be seeking increasing numbers of given species, and promoting the use of these species through the Wildlife Corridor Program and other community-oriented programs, and through publications. 	BMC, DCC, NS BMC, DCC BMC, DCC, WCPO	Mod. Mod. Mod.	Ongoing Ongoing Ongoing
2.4b	Investigate opportunities for expansion of the council nursery's production of indigenous plants and trees for Council use and for sale to the public.	MPB, NS,	Mod.	2003/04
2.4c	Utilise the Banyule Vegetation Community Map to identify the vegetation community appropriate to a given location and utilise or encourage the use of an increasingly diverse range of the species appropriate to that community.	BMC, DCC, WCPO, CP	Mod	Ongoing

No.	Action	Responsibility	Priority	Status/Timing
2.4d	Identify the most poorly represented vegetation communities within Banyule and re-establish them at appropriate locations whenever there is an opportunity.	BMC, DCC, WCPO, HSC, TCC	High	2003/04 Ongoing
3	WATERWAYS AND WETLANDS			
3.1	Implement, and monitor the effectiveness of, planning procedures which protect and enhance the natural values and amenity of streamside environments and provide a buffer to the built environment			
3.1a	Continue to implement and monitor the effectiveness of planning procedures which protect and enhance the natural values and amenity of streamside environments and provide a buffer to the built environment	MDS, CP, PEO, EO	High	Ongoing
3.2	Develop trails and interpretive signage which improve accessibility and understanding of the values of waterways and wetlands			
3.2a	Extend interpretive signage to other significant reserves.	BMC, DCC, CSPU,	Mod.	Ongoing
3.3	Develop and implement programs for the control of erosion, removal of weeds and re-establishment of the indigenous vegetation of waterways and wetlands			
3.3a	Continue programs for the re-establishment of indigenous vegetation along waterways.	BMC, DCC, WCPO, MW	High	Ongoing
3.3b	Continue programs for the removal of existing environmental weeds along waterways and controlling their spread.	BMC, DCC, WCPO, MW	High	Ongoing
3.3c	Maintain past vegetation rehabilitation works.	BMC, DCC, WCPO, HSC	High	Ongoing
3.3d	Seek the cooperation and involvement of private landowners, DSE, Parks Victoria and Melbourne Water in the development and implementation of a long-term strategy for the weeding and revegetation with indigenous species of degraded areas of the riparian strip of all waterways in Banyule. (See also 1.4a.)	BMC, DCC, EO, WCPO, MW	High	Ongoing
3.3e	Continue support of the Waterwatch program	C, EX, EO, BMC, DCC, WC	High	Ongoing
3.3f	Implement the Darebin Creek and Lower Plenty River Concept Plans, the Darebin Creek and Plenty River Waterway Management Plans, the Stormwater Quality Management Plan and the Yarra River Action Plan.	BMC, DCC, EO, AMC	High	Ongoing
3.3g	Monitor waterways for problems with erosion and contact Melbourne Water for remedial action	BMC, DCC, MW	High	Ongoing
3.4	Create and take opportunities to improve the environmental values and continuity of reserves and trails along waterways			
3.4a	Continue to liaise with neighbouring municipalities and Parks Victoria to encourage the establishment of complementary natural parklands along both banks of the waterway boundaries, and to ensure that there is consistency of management and Planning Scheme controls for those parklands	BMC, CSPU, CP, MSE, SPC, EO	Mod.	Ongoing
3.4b	Continue to provide pedestrian and cyclist links to the abutting suburbs and the Yarra River pathway system consistent with the Banyule Bicycle Statement.	CSPU, DCC, BMC	Mod.	Ongoing
3.5	Create and take opportunities for the establishment of wetlands for the improvement of water quality and as habitat for wildlife			

Environment Strategy Action Plan 2003

No.	Action	Responsibility	Priority	Status/Timing
3.5a	Continue to pursue the development and maintenance of wetlands and retarding ponds for the control and treatment of stormwater. (See Drainage policy and Stormwater Management Plan.)	BMC, DCC, EO, AMC	High	Ongoing
4	PARKS AND RESERVES			
4.1	Develop and implement management plans for the protection and enhancement of natural values within parks and reserves and integration with recreational uses			
4.1a	Progressively develop management plans for the key reserves supporting indigenous flora, fauna or habitats, determining priorities for their development according to threats to environmental values (plans to include impacts from surrounding areas, impacts of recreational use and the re-establishment of habitat and habitat links for indigenous flora and fauna).	BMC, DCC, EO, CSPU	High	Ongoing
4.1b	Review existing management plans to ensure that they are still relevant.	BMC, DCC, EO, CSPU	Mod.	Review at least two plans per year
4.1c	Conduct community surveys to gauge community attitudes to the condition and management of environmental reserves.	CC, EO, BMC, DCC	High	Undertake on 3 year cycle
4.2	Develop and implement management practices which ensure the ecological sustainability of indigenous vegetation and natural habitat within parks and reserves			
4.2a	Continue to develop and implement management practices which ensure the ecological sustainability of indigenous vegetation and natural habitat within parks and reserves.	MPB, BMC, DCC, EO, CSPU	High	Ongoing
4.3	Implement the policy against the planting of environmental weed species within parks and reserves, as an example to the community			
4.3a	Ensure that the policy against the planting of environmental weed species within parks and reserves is implemented and that updates on environmental weeds provided by DSE or DPI included in the policy.	MPB, HSC, BMC, DCC, EO, CSPU	High	Ongoing
4.4	Ensure staff and contractors operating within parks and reserves are aware of environmental management issues and appropriately trained in management of the natural environment			
4.4a	Develop guidelines outlining requirements for environmental management and the appropriate level of skills and qualifications required for inclusion as specifications in tender documents	EO, BMC, BSOC	High	2003/04
4.4b	Provide site specific information to contractors on requirements for the protection of indigenous flora and fauna	EO, BMC, BSOC	High	Ongoing
4.5	Create and take opportunities for the establishment and designation of new reserves for the protection and enhancement of the natural environment and for the linking or extension of existing reserves			
4.5a	Include habitat links and other significant habitat in reserves wherever possible, through public open space allocations, acquisition, land swaps or other arrangements	EO, CSPU, BMC, DCC	Mod.	Ongoing

No.	Action	Responsibility	Priority	Status/Timing
4.5b	Develop and implement a system for the designation of areas of public and supporting significant indigenous flora and fauna or substantial remnants as Flora and Fauna Reserves (or equivalent) and ensure the priority for their management is for the protection and enhancement of their environmental values	EO	High	Ongoing
4.5c	Pursue the protection of significant habitat on private land including possible acquisition by Council where a site is particularly important to conservation.	EO	Mod.	Ongoing
5	LANDSCAPE AMENITY			
5.1	Identify the landscape values of particular areas and adopt planting policies which reflect and enhance their character while being mindful of the preference for indigenous species on biodiversity and resource conservation grounds.			
5.1a	Implement recommendations for the protection and enhancement of areas of landscape significance as identified in the Heritage Places Study, the Neighbourhood Character Strategy, Significant Tree and Vegetation Study, Street Tree Strategy and Wildlife Corridor Program Report.	MDS, MPB, SPC, BMC, DCC, TCC, HSC, EO	High	Ongoing
5.1b	Adjust planting regimes to reflect the recommendations in the above strategies or studies, while being mindful of the preference for indigenous species on biodiversity and resource conservation grounds.	MPB, BMC, DCC, TCC, HSC	High	Ongoing
5.1c	Develop management plans for any areas of landscape significance where it becomes apparent that there is a conflict between different Council policies.	BMC, DCC, EO, HC	Mod.	Ongoing
5.1d	Investigate and implement an effective monitoring program to assess the vegetation cover of the City.	EO, MPB	High	2003/04
5.1e	Investigate the implementation of planning controls that will prevent any further deterioration of the natural River Red Gum Woodland landscape quality of the Lower Plenty area by the extensive planting of rows of tall exotic trees.	MES, MDS, EO	High	2004/05
5.2	Develop and implement procedures for the assessment of proposed developments on vegetation and landscape amenity and ensure compensation for any loss of vegetation			
5.2a	Continue to assess the impact of proposed developments on vegetation and landscape amenity and ensure compensation for any loss of vegetation.	MDS, CP, EO, HC, PEO	High	Ongoing
5.3	Identify and provide appropriate protection for vegetation of environment, heritage or landscape significance on public and private land			
5.3a	Pursue amendments to the Planning Scheme to provide protection to any newly identified sites of significance.	SPC, EO	Mod.	As required.
5.4	Develop and implement programs for the enhancement of streetscapes and parks with vegetation and for the appropriate replacement of vegetation lost or removed			
5.4a	Continue to implement the Street Tree Strategy.	TCC, HSC	High	Ongoing
5.4b	Continue to revegetate parks.	MPB, BMC, DCC,	High	Ongoing
5.4c	Take the opportunity to utilise indigenous species wherever appropriate and practicable.	MPB, TCC, HSC	High	Ongoing

Environment Strategy Action Plan 2003

No.	Action	Responsibility	Priority	Status/Timing
5.4d	Develop a combined strategy for street and park trees.	MPB, EO, TCC, BMC, HSC	High	2004/05
5.5	Develop and implement programs for the undergrounding of overhead cables to minimise impacts on landscape amenity in accordance with Council's Undergrounding of Aerial Cable Policy			
5.5a	Provide, where a planning permit is required, the set of standard conditions that require the supply of electricity to a development via underground means.	MDS	Mod.	Ongoing
5.5b	Encourage and support the undergrounding of existing power lines and other aerial cables wherever practicable.	DCD, MDS	Mod.	Ongoing
6	HERITAGE PLACES			
6.1	Identify the values of heritage places and their association with our environment			
6.1a	Complete the implementation of the adopted recommendations of the Heritage Places Study	SPC	High	Ongoing
6.1b	Establish a procedure for the assessment of potential heritage places and pursue amendments to the Planning Scheme to provide protection to any newly identified heritage structures and sites.	SPC	Mod.	2004/05
6.1c	Develop guidelines for the protection of heritage areas	SPC, MDS	Mod	2004/05
6.2	Develop and implement procedures for the assessment of proposed developments on the values of heritage places and to provide for their protection			
6.2a	Ensure appropriate conservation management of Council owned heritage places.	MPB, MDS,	Mod.	Ongoing
6.2b	Continue to assess the impact of proposed developments on the values of heritage places utilising an experienced heritage consultant.	MDS, CP, HC	High	Ongoing
6.2c	Undertake a review of heritage places in Banyule every 5 years.	SPC	High	Review –2004
6.3	Encourage development in keeping with the values of heritage places and create and take opportunities for their enhancement as features of our environment			
6.3a	Develop incentive programs that will encourage the protection and enhancement of the values of identified heritage places.	SPC	High	2004/05
6.3b	Investigate further opportunities for the promotion of identified heritage places.	CSC, CC, SPC	Mod.	Ongoing
7	BUILDING DESIGN AND INFRASTRUCTURE			
7.1	Identify areas appropriate for different types of development in accordance with the efficient use of infrastructure and community needs, while minimising impacts on environmental values			
7.1a	Continue to evaluate the effectiveness of the Planning Scheme zones and overlays in achieving appropriate development.	SPC, MDS, MSE,	Mod.	Ongoing
7.2	Encourage the design of buildings and layout of development in a manner which will protect and enhance our environmental amenity, provide buffers to environmentally sensitive areas and promote the efficient use of resources			
7.2a	Develop Landscaping Guidelines and make them available to the community.	CP, EO	Mod.	2004/05
7.2b	Develop additional guidelines, as the need becomes apparent, and regularly update existing guidelines, as new information becomes available.	MDS	Mod.	As required
7.2c	Stock and regularly update pamphlets on energy efficient building design and layout and on energy efficient appliances.	CSS, EO, BS	Mod.	Ongoing

No.	Action	Responsibility	Priority	Status/Timing
7.2d	Develop comprehensive guidelines and controls for subdivision design to minimise impacts on the environment and heritage to include: inclusion of areas of environment and heritage significance in reserves, provision of road interfaces to reserve boundaries, native vegetation retention requirements, requirements for minimal site works/ soil relocation, provision of services, visual impacts and effluent disposal.	CP, EO, SPC	High	Ongoing
7.3	Encourage and implement programs for the development of infrastructure that will assist in protecting and enhancing our environment			
7.3a	Encourage and implement programs for the development of infrastructure that will assist in protecting and enhancing our environment, including bicycle and walking paths, public transport infrastructure, and the like.	EO	Mod	Ongoing as required
7.4	Develop and implement programs to maintain and enhance the local character of strip shopping centres and improve the amenity of other commercial and industrial areas			
7.4a	Continue to implement actions in shopping centre business plans to improve facilities and streetscapes.	MSE, EDP	High	Ongoing
7.4b	Undertake a study to identify how the amenity of industrial areas may be improved.	MSE, EDP	Mod.	2004/05
8	SUSTAINABILITY			
8.1	Undertake and encourage research into the social and technological requirements for the future sustainability of our environment			
8.1a	Continue to be involved with research into the social and technological requirements for the future sustainability of our environment	EO	High	Ongoing
8.1b	Continue to integrate the principles of Local Agenda 21 and other outcomes of Earth Summits into Council's policies and operations.	EO, EX	High	Ongoing
8.1c	Constantly monitor research and developments in environmentally and socially sound products and services and as appropriate incorporate them into Council policies, guidelines and practices.	EO, PC, RCC, WEC, MC, MO, MPB, EX	High	Ongoing
8.2	Develop and implement planning policies and controls which provide for and promote the future sustainability of our environment			
8.2a	Continue to implement current planning policies and controls and modify them as new information on sustainable development comes to hand	MDS, CP, SPC, EO	High	Ongoing
8.2b	Develop a Sustainability Policy and incorporate it into the Banyule Planning Scheme.	SPC, EO, EX	High	2004/05
8.3	Develop a Sustainability Framework			
8.3a	Develop a Sustainability Framework for the effective integration into Council practices of the environmental, social, cultural and economic aspects of sustainability	EO, EX	High	2004/05
9	CONSERVING RESOURCES			
9.1	Develop and implement programs which promote a reduction in the amount of resources utilised, the efficient and sustainable use of the resources that are used and the use of alternatives to non-renewable resources			

Environment Strategy Action Plan 2003

No.	Action	Responsibility	Priority	Status/Timing
9.1a	Implement the following Council documents, monitor their implementation and review them on a regular basis. <ul style="list-style-type: none"> Greenhouse Action Strategy Environmental Purchasing Guidelines Waste Minimisation Strategy Sustainable Building Checklist 	All of Council EX, CCP, MPB, BMSC, PC, MO, EO	High	Ongoing
9.1b	Continue to make available promotional literature on energy, water and resource conservation.	CSC, EO	Mod.	Ongoing
9.1c	Continue to encourage the planting of gardens with indigenous plants for water conservation purposes.	HSC, BMC, DCC, WCPO, EO, CP,	Mod.	Ongoing.
9.1d	Continue to promote and implement energy efficient design standards and guidelines for new subdivisions, new houses and renovations.	MDS, CP, BS	Mod.	Ongoing
9.1e	Develop and implement a Water Conservation Strategy in conjunction with membership of the Water Campaign.	EO	High	2003/04
9.1f	Monitor Council's energy and water consumption.	DCorS, CCP, EO	High	Ongoing
9.1g	Investigate the opportunity for developing alternative energy generation within the Banyule area.	CCP	Mod	2004/05
9.1h	Regularly review Council's office procedures to ensure widest possible application of environmentally sound products and practices, including recycled and reusable products	EX, EO, PC, MBI	Mod.	2004/05 Ongoing
9.1i	Pursue avenues in conjunction with the MAV to encourage power companies to utilise the most efficient lighting technology.	DCD, DCS, EO, CCP	High	2003/04 Ongoing
9.2	Encourage and support the development and use of energy and water efficient products and technologies			
9.2a	Continue to encourage and support the development and use of energy and water efficient products and technologies by the provision of <ol style="list-style-type: none"> information at service centres seminars for schools, community and business incentives targeted programs to deal with problem areas etc 	CCP, EO, WC	Mod	Ongoing
10	MINIMISING WASTE			
10.1	Provide waste collection services which encourage the separation of recyclable and re-usable waste and provide incentives for minimising the amount of waste produced			
10.1a	Implement the revised Waste Minimisation and Management Strategy.	WEC, RCC	High	Ongoing
10.1b	Continue to encourage community participation in waste minimisation and recycling activities.	RCC, WEC	High	Ongoing
10.1c	Continue to develop and promote programs for the collection and composting of green-waste.	DCS, MO, WEC	High	Ongoing
10.1d	Continue to monitor and assess Council's waste production and recycling programs.	MO, RCC, WEC,	High	Ongoing

No.	Action	Responsibility	Priority	Status/Timing
10.2	Encourage and support the development of technologies and industries for the re-use and recycling of waste			
10.2a	Continue to encourage and support the development of technologies and industries for the re-use and recycling of waste.	DCS, MO, WEC	High	Ongoing
II	CONTROLLING POLLUTION			
11.1	Develop and implement policies and controls for preventing air, noise, water, light and visual pollution			
11.1a	Investigate the need for further policies and controls to prevent air, land, noise, water and visual pollution.	EHO, EO, MO, MDS	Mod.	Ongoing
11.1b	Support the implementation of actions in Waterway Management Action Plans and the Stormwater Quality Management Plan that address problems with pollution.	EX, DCC, BMC, EO, AMC, EDP	High	Ongoing
11.1c	Pursue a reduction in the amount of light pollution by appropriate baffling of public lighting and through the development and application of appropriate planning controls.	EO, CCP, SPC, MC	High	2004/05
11.2	Develop and implement procedures to identify and assess the threats of pollution to our environment, for the reporting of pollution and for the rehabilitation of polluted sites			
11.2a	Co-operate with the EPA in the identification of pollution threats and events, and in the pursuit of measures to reduce the risk to people and the environment.	EHO, EPA	High	Ongoing
11.2b	In co-operation with the EPA, target industrial areas with an education campaign on the handling and disposal of hazardous chemicals and on the heavy penalties for pollution of the environment.	EHO, EO, EPA	Mod.	Ongoing
11.2c	Maintain records of pollution events.	EHO	High	Ongoing
11.2d	Continue involvement in the Environmental Indicators for Metropolitan Melbourne project and utilise data to monitor air pollution levels amongst other indicators.	EO	High	Ongoing
11.3	Encourage and promote alternatives to reliance on the use of private cars for transport by creating and taking opportunities for the enhancement of public transport, trail networks and infrastructure			
11.3a	In conjunction with VicRoads, prepare master plans for transport corridors that consider both the traffic flows and its effects on adjacent land use.	ESC, SPC, VR	Mod.	Ongoing
11.3b	Monitor and review the City's traffic management practices (to reduce vehicle greenhouse gas emissions) including: <ul style="list-style-type: none"> designated speed limitations signal coordination alteration to design and road surface to achieve improved energy conservation and reduced greenhouse impact. 	ESC	High	Ongoing
11.3c	Consult with relevant organisations such as VicRoads and other Councils to develop long-term strategies to lessen the environmental impact of vehicle use.	MDS, ESC, EO, VR	High	Ongoing
11.3d	Continue to implement and to extend Local Area Traffic Management Programs, and in particular those incorporating traffic calming techniques.	MDS, ESC	Mod.	Ongoing
11.3e	Support and assist relevant authorities to provide a transport network that adequately services all parts of the City.	MSE, DCD, MDS,	High	Ongoing

Environment Strategy Action Plan 2003

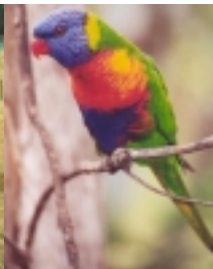
No.	Action	Responsibility	Priority	Status/Timing
11.4	Ensure the implementation of the Environmental Purchasing Guidelines achieves the use of environmentally friendly products and technologies which minimise pollution in preference to those which potentially create pollution.			
11.4a	Ensure the implementation of the Environmental Purchasing Guidelines achieves the use of environmentally friendly products and technologies which minimise pollution in preference to those which potentially create pollution.	EX, EO	High	Ongoing
11.4b	Undertake an environmental audit of Council's use of products and technologies.	EX, EO	High	2004/05
11.4c	Ensure that products and technologies used by contractors are environmentally friendly.	EX, BSOC, EO	Mod.	2003/04
11.5	Develop and implement programs to prevent litter and sediment from entering our waterways and from degrading our environment in general			
11.5a	Implement the Litter Strategy component of the Waste Minimisation Strategy and litter controlling aspects of the Stormwater Quality Management Plan.	MO, WEC, AMC		Ongoing
11.5b	Develop formal controls requiring the installation of litter traps and minimisation of sediment input into waterways when creating major new subdivisions, both greenfields and infill.	MDS	High	Ongoing
11.5c	Continue to support the Clean-up Australia Campaign by: <ul style="list-style-type: none"> • promoting national clean-up days • pursuing local community involvement in the program • providing assistance with rubbish disposal. 	BMC, WEC, DCC, CC	Mod.	Ongoing
11.6	Encourage and support programs for the safe disposal and collection of hazardous materials			
11.6a	Support and promote the continued collection of household chemicals by EcoRecycle Victoria.	MO, CC	High	Ongoing
11.6b	Cooperate with the EPA and Melbourne Water to provide information on the safe storage and disposal of hazardous household chemicals and waste.	EHO, CC, EPA, MW	Mod.	Ongoing
11.6c	Ensure that the disposal of waste is carried out in such a manner as to minimise any adverse impact on the environment and particularly on the quality of water.	DCS, EHO, MPB, MC, MO	High	Ongoing
11.7	Ensure staff and contractors are appropriately trained in the safe handling and use of materials which are potentially hazardous to the environment			
11.7a	Continue to ensure staff and contractors are appropriately trained in the safe handling and use of materials which are potentially hazardous to the environment.	RTL, EHO, DCS, MPB, MC, MO	High	Ongoing
12	PROMOTING OUR ENVIRONMENT			
12.1	Develop and make available up to date information, brochures and publications promoting our environment and how to look after it			
12.1a	Continue to develop and make available at service centres (and on Council's web site) up to date information, brochures and publications promoting our environment and how to look after it.	WCPO, CC, EO, BMC, DCC, CSS, WEC, RCC	High	Ongoing

No.	Action	Responsibility	Priority	Status/Timing
12.1b	Undertake community surveys to monitor the level of awareness of the values of Banyule's environment and of requirements for its protection and enhancement.	CC, EO	High	2004/05 Ongoing
12.1c	Continue to promote the values of our environment and relevant issues through the media, the web, the Banner, displays and information sessions.	WCPO, CC, WEC, EO, BMC, DCC, CSS	High	Ongoing
12.2	Develop and make available environmental education programs and activities for schools and the community			
12.2a	Continue to develop and make available environmental education programs and activities for schools and the community.	CC, WCPO, BMC, DCC, EO, WEC, RCC	High	Ongoing
12.2b	Develop an Environmental Education Strategy	EO, CC, WCPO, BMC, DCC, WEC, RCC	High	2003/04
12.3	Develop and install interpretive signage at key locations promoting our environment			
12.3a	Extend interpretive signage to additional reserves.	MPB, BMC, DCC	Mod.	Ongoing
12.4	Develop and facilitate tourism opportunities for promoting our environment in a manner which is compatible with protecting and enhancing its amenity			
12.4a	Continue to develop and facilitate tourism opportunities for promoting our environment in a manner which is compatible with protecting and enhancing its amenity.	MLRC, CSC, CSPU	Mod.	Ongoing
13	SUPPORTING COMMUNITY INVOLVEMENT			
13.1	Support the involvement of community groups, schools and volunteers in protecting and enhancing our environment			
13.1a	Continue to support the involvement of community groups and volunteers in protecting and enhancing our environment by providing assistance with materials, organisation and promoting activities and by providing opportunities for community involvement in the development of environmental strategies and the resolution of environmental issues.	EO, BMC, DCC, WCPO	High	Ongoing
13.1b	Monitor the number of individuals, schools and groups involved in protecting and enhancing the environment	EO, BMC, DCC, WCPO	High	Ongoing
13.1c	Continue to develop and provide grants programs and financial incentives encouraging the involvement of community groups, schools and individuals in protecting and enhancing our environment.	EO, WCPO	High	Ongoing
14	INTEGRATED APPROACH			
14.1	Facilitate and provide opportunities for involvement of the community and other organisations in decision making processes and feedback on the implementation of the environment strategy			
14.1a	Maintain the Banyule Environment Advisory Committee and promote its activities.	EX, EO, CC, Comm	High	Ongoing
14.1b	Involve community groups in the cooperative planning of environment projects	EO, BMC, DCC, WPCO, CSC	High	Ongoing

Environment Strategy Action Plan 2003

No.	Action	Responsibility	Priority	Status/Timing
14.1c	Provide appropriate opportunity for community debate and consultation in local environmental decision-making.	DCD, MDS, MSE, EO	High	Ongoing
14.1d	Organise an annual Environmental Forum at which local environmental groups and interested individuals can meet, hear of latest developments and provide input to environmental issues.	EO, BMC, DCC, WCPO, CSC, WEC, RCC	Mod.	Annually
14.2	Develop and implement programs for raising the environmental awareness of staff, encouraging their commitment to environmental best practice, and providing appropriate training in environmental management			
14.2a	Establish an environmental training program for the education of Council staff, which covers areas of the Environment Strategy relevant to the staff concerned.	EO, BMC, DCC, WCPO, WEC, RCC	High	Ongoing
14.2b	Develop council staff education programs on <ul style="list-style-type: none"> reducing the use of non-renewable resources reducing energy consumption 	EO, PC, CCP	High	Ongoing
14.2c	Provide Construction staff with training on the environmentally sound management of construction sites	MC, EO	High	2003/04 Ongoing
14.2d	Implement, across the whole organisation, the Integrated Business Management System that combines occupational health and safety, quality assurance and environmental management systems	MBI, EO,	High	2003/04 Complete - 2005
14.3	Encourage and participate in regional initiatives consistent with the environment strategy as a means of developing an integrated approach to protecting and enhancing our environment and ensuring the efficient use of resources			
14.3a	Continue to coordinate with government authorities and adjacent municipalities in the management of natural areas and in general environmental management.	EX, EO, BMC, DCC, MO	High	Ongoing
14.4	Consult and liaise with governments and government agencies on the need for and effects of regional, state and national policies and programs relevant to our environment			
14.4a	Continue to consult and liaise with governments on the need for and effects of regional, state and national policies and programs relevant to our environment.	EX, EO, BMC, DCC, MO	High	Ongoing
I5	MONITORING PROGRESS			
15.1	Further develop indicators and other performance measures and identify responsibilities for the implementation of the environment strategy			
15.1a	Further refine the indicators for measuring the achievement of Policy Aims.	Responsible Officers and EO	Mod.	2003/04 Ongoing
15.1b	Ensure that actions are incorporated into the business plans, service specifications, IBMS local action plans and annual work programs, as appropriate, for the Council area concerned.	EX, EO, MBI	High	Ongoing
15.1c	When the position of a responsible officer becomes vacant, review the position description to ensure that the responsibilities assigned to them are appropriately recognised.	EX, M	High	Ongoing

No.	Action	Responsibility	Priority	Status/Timing
15.1d	Review and modify Council leases to ensure that environmental management of leased buildings and areas is consistent with Council's Environment Strategy, especially as regards the management of vegetation, energy and resource conservation, and waste and litter management.	PO	High	Ongoing
15.1e	Ensure that Council tender documents and contracts have conditions or specifications that require that works or services provided are consistent with Council's Environment Policy and Strategy.	BSOC	High	2003/04 Ongoing
15.2	Produce an annual State of the Environment Report identifying both achievements and failures in the implementation of the environment strategy, priorities for further action and future financial requirements			
15.2a	Produce an annual State of the Environment Report	Responsible Officers and EO Mod.		Annually
16	REVIEWING THE STRATEGY			
16.1	Review the environment strategy on a five yearly basis			
16.1a	Review the environment strategy on a five-yearly basis to accommodate changes in priorities for protecting and enhancing our environment.	EO, BEAC	Mod.	2008/09



Contacting your Council

For all enquiries please call 9490 4222
TTY 9432 7211
Postal Address:
PO Box 51, Ivanhoe, 3079
DX 97904 Ivanhoe
Fax No: 9499 1391
E-mail: enquiries@banyule.vic.gov.au
Website: www.banyule.vic.gov.au

Council has three Service Centres at the following locations

Ivanhoe: 275 Upper Heidelberg Road
Rosanna: 44 Turnham Avenue
Greensborough: 9 - 13 Flintoff Street

Office Hours of Opening:

All Offices are open: Monday to Friday 8.30am - 5.00pm
Rosanna - Wednesday night until 7.00pm
Greensborough - Saturday 9.00am - 12.00pm

Translations

Αν χρειάζεστε μια επεξήγηση γι' αυτό το φυλλάδιο, μπορείτε να τηλεφωνήσετε στην Υπηρεσία Εξυπηρέτησης Πελατών στο 9490 4222.

Se desiderate una spiegazione di questo opuscolo, chiamate il Servizio Clienti al numero 9490 4222.

Hadii aad u baahan tahay faahfaahinta ama sharraxaadda warqadan fadlan soo wac adeegga macaamiisha (customer) oo lambarkoodu yahay 9490 4222.

欲知這本小冊子的詳情，請致電 9490 4222 顧客服務部