

NEW PARENT GROUPS

Facilitated for first time parents, New Parent Groups are a great way to meet other parents in your area, share experiences and make new friends. The sessions cover parent education topics and are facilitated by Banyule Maternal and Child Health.

www.banyule.vic.gov.au/Services/Community-Services/Children/Parent-Education-and-Support/New-Parent-Groups

EARLY INTERVENTION

Early Intervention means accessing support as early as possible to work on your child's developmental, health and support needs. Early intervention services give specialised support to children with developmental delays and their families. This support might include special education, therapy, counselling, service planning and help getting universal services like kindergarten and child care.

www.raisingchildren.net.au and search National Disability Insurance Scheme

COMMUNITY HEALTH SERVICES

Banyule Community Health provides a range of health and welfare services for children which includes paediatric speech pathology and occupational therapy, nutrition advice, a medical clinic, counselling and dental services. Facilitated play groups are offered as well as community midwifery and Maternal & Child Health Nursing.

An Aboriginal Health Team supports the health and wellbeing of young families.

www.bchs.org.au

PLAYGROUP

Playgroup is for babies, toddlers, pre-schoolers and their parents or carers. At playgroup you get to meet other people going through similar experiences, ease the isolation that can come with caring for young children and find out about local community, health and support services.

www.playgroup.org.au

PRIMARY SCHOOL ENROLMENT

Primary School is an important chapter in your child's education. To start primary school, children need to turn five years of age by 30th April of the year they start, and must start by the time they are six. You can enrol in a primary school at any time, but you may wish to visit a number of schools to decide on the best one for your child. Keep in mind that some schools restrict enrolments to a particular area around the school.

www.education.vic.gov.au/school/parents/primary

IMMUNISATION

Immunisation is a simple, safe and effective way to protect your child against harmful diseases. Immunisation not only protects individuals, but also others in the community, by reducing the spread of disease. You are required to immunise your child if you wish to enrol in childcare or kindergarten, or to receive Family Assistance payments.

www.raisingchildren.net.au and search for Immunisation
www.immunise.health.gov.au

USEFUL LINKS

Better Health Channel
www.betterhealth.vic.gov.au

VicHealth
www.vichealth.vic.gov.au

Victorian Aboriginal Child Care Agency
www.vacca.org

Raising Children Network
raisingchildren.net.au

Spectrum (migrant and refugee services)
www.spectrumvic.org.au

Children's Protection Society
www.cps.org.au

Murdoch Children's Research Institute
www.mcri.edu.au/parents/parent-fact-sheets



BANYULE CHILDREN

the early childhood journey



Banyule Children: The Early Childhood Journey is all about helping families to learn more about local services that support children to stay healthy, grow and learn before they go to school.

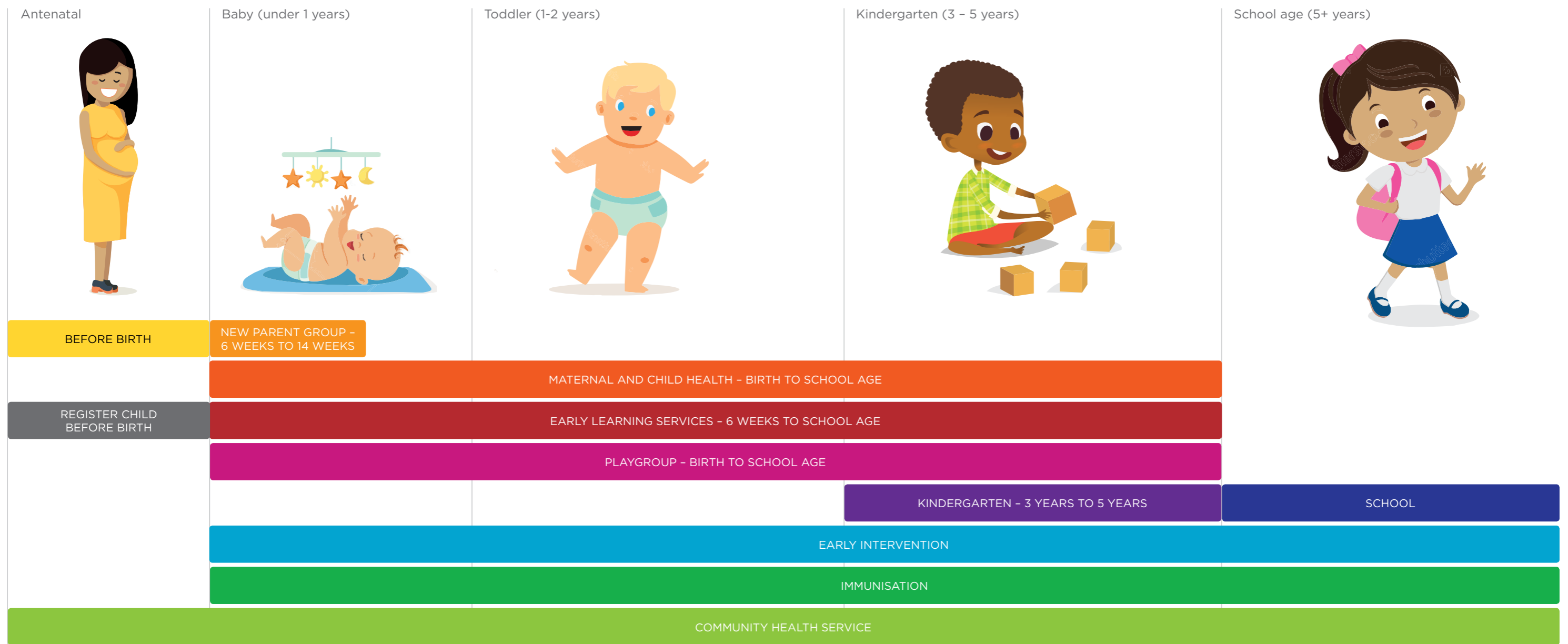
Proudly developed by the Banyule Priority Communities Childhood Network

"All of us learn throughout our lives. It starts from the day we are born. It is now recognised that the early years (birth to 8 years) of life are the most important for learning. That's when the foundations for the future are laid, and when we begin moving down the path that will take us through childhood, the teenage years and ultimately into adulthood."

Department of Education and Training



Banyule
CITY COUNCIL



BEFORE BIRTH

The maternity and newborn care system looks after women and their babies during pregnancy, labour and birth, and after they have given birth. You can choose between a public hospital, a birth centre, your doctor, a private hospital or a home-birthing midwife to provide some or all of your care. Contact your General Practitioner for a referral.

www2.health.vic.gov.au/hospitals-and-health-services
www.betterhealth.vic.gov.au/health/healthyliving/pregnancy-care-choices

MATERNAL AND CHILD HEALTH

The Maternal and Child Health Service provides all families with ten Key Ages and Stages consultations from birth to 3 1/2 years, including an initial home visit and centre consultations at 2, 4, and 8 weeks, and 4, 8, 12, 18 months, and 2 and 3 1/2 years of age. This free service supports families in the areas of parenting, health and development, promotes family health, wellbeing and safety, makes referrals and helps link families with local communities.

www.banyule.vic.gov.au and search for Maternal and Child Health Services

EARLY LEARNING SERVICES

Child care and early learning provides the foundation for children to develop in a safe environment while also having the opportunity to socialise with other children. In addition to benefiting your children's early years' development, child care and early learning also helps working families to return to work. Finding the right child care service for you and your child is a very important decision for many Banyule families. All early childhood services in Banyule are required to comply with the new quality standards to make sure each child gets the best possible start in life. Common types of care include long day care, occasional care, family day care, and out of school hours (OSHC) care.

www.mychild.gov.au

KINDERGARTEN

Kindergarten programs help children with their language, development and self-confidence. All children in Banyule are eligible to access a funded kindergarten program in their year before school, and your child must be at least four years old by 30 April in the year they will attend. Some Banyule kindergartens provide programs for three year olds, but these programs are not funded by the Victorian Government, with the exception of children eligible for Early Start kindergarten.

www.education.vic.gov.au/childhood/parents/kindergarten
www.banyule.vic.gov.au and search for Kindergarten Registration

